



UF UNIVERSITY of
FLORIDA
College of Medicine
Jacksonville

DEPARTMENT OF MEDICINE

ANNUAL REPORT 2015-2016

TABLE OF CONTENTS
ACADEMIC YEAR 2016 (7/15 – 6/16)

- I. Statement from the Chairman**
- II. Department Organizational Overview**
 - a. Administration
 - b. Division Chiefs
 - c. Residents/Fellows
- III. Graduate Medical Education**
 - a. Internal Medicine Residency Training Program
 - b. Subspecialty Fellowship Programs
 - c. Student Education Programs
- IV. Department Research**
- V. Individual Divisions**
 - a. Cardiology
 - b. Endocrinology, Diabetes and Metabolism
 - c. Gastroenterology
 - d. General Internal Medicine
 - e. Hematology and Medical Oncology
 - f. Infectious Disease
 - g. Nephrology and Hypertension
 - h. Pulmonary, Critical Care and Sleep Medicine
 - i. Rheumatology and Clinical Immunology

Department of Medicine
University of Florida
College of Medicine—Jacksonville
653-1 West 8th Street, L20
Jacksonville FL 32209
904-244-8846
www.hscj.ufl.edu/medicine/

STATEMENT FROM THE CHAIRMAN
ACADEMIC YEAR 2016 (7/15 - 6/16)

Dear Colleagues and Friends:

I am pleased to provide you the Annual Report of the Department of Medicine at the University of Florida- College of Medicine - Jacksonville for the academic year July 2015 through June 2016. The following is a brief description of the departmental accomplishments for the past year.

Patient care: The successful launching of clinics at our North campus exceeded our expectations as to the rapid pace of growth. The General Internal Medicine and the subspecialties were represented in this endeavor. This unprecedented growth was accompanied with a strong clinical productivity at our 8th street campus and Emerson street campus. Another major accomplishment during the last year was the integration of our Oncology services with that of Century 21 providers. The clinical excellence of the faculty coupled with continued improvements in clinical operations further enhanced our staff morale and patient satisfaction.

Education: There were 6 faculty members in the Department who received the Exemplary Teacher Award. The scholarly productivity of the house staff remained high. One third of presentations of the Annual Research Day were made by the residents and fellows within the Department. Continuing Medical Education (CME) initiatives were offered by several of the Divisions within the Department including an Internal Medicine review symposium, annual Nephrology symposium, Women's Heart Health conference and musculo-skeletal ultra sound course.

Research: There were a total of 133 scholarly publications authored by faculty members. Faculty made 149 national and regional presentations. During the academic year 2016 the extramural research funding within the Department grew by another 10%.

Overall, the Department once again has excelled in every aspect of the academic mission of educating students and residents and faculty has maintained their scholarly productivity. It is indeed a privilege and a distinct honor to have the opportunity to serve as the Chairman of such an exceptionally productive Department.

Sincerely,

Arshag D. Mooradian, M.D.
Professor and Chairman

DEPARTMENT ORGANIZATIONAL OVERVIEW
ACADEMIC YEAR 2016 (7/15 - 6/16)

Arshag D. Mooradian, M.D.

Chairman, Department of Medicine

Linda R. Edwards, M.D.

Associate Chair, Department of Medicine

James Scolapio, M.D.

Associate Chair, Department of Medicine

Abubakr Bajwa, M.D.

Associate Chair, Department of Medicine

Jeffrey House, D.O.

Program Director, Internal Medicine Residency and Associate Chair, Department of Medicine

Carlos Palacio, M.D., M.P.H.

Associate Program Director, Internal Medicine Residency and Director, Medical Student Clerkship

Nilmarie Guzman, M.D.

Associate Program Director, Internal Medicine Residency

Michael Haas, Ph.D.

Director of Research

Ronald Stone, M.B.A., R.D.

Administrator

DIVISION CHIEFS

Cardiology

Theodore Bass, M.D.

Endocrinology, Diabetes and Metabolism

Kent R. Wehmeier, M.D.

Gastroenterology

James Scolapio, M.D.

General Internal Medicine

Linda R. Edwards, M.D.

Hematology and Medical Oncology

Fauzia Rana, M.D.

Infectious Disease

Michael Sands, M.D., M.P.H. & T.M.

Nephrology and Hypertension

Charles Heilig, M.D.

Pulmonary, Critical Care and Sleep Medicine

Abubakr Bajwa, M.D.

Rheumatology and Clinical Immunology

Gurjit Kaeley, M.D.

RESIDENTS/FELLOWS**Chief Residents**

Tracy Ashby, DO
Kaitlin McCurdy, MD

Housestaff I

Bashar Al-Turk, DO
Emma Bueno, MD
Mario Cisneros, DO
Kaihan Fakhar, MD
Maria Gutierrez, MD
Ciel Harris, MD
Amie Leon, DO
Brittany Lyons, DO
Ryan Moorhouse, DO
Grant Nelson, DO
Pujan Patel, MD
Julio Perez-Downes, DO
Aaron Richardson, MD
Keyrillos Rizg, MD
Stuart Shah, MD
Scott Steinberg, MD
Jorge Trabanco, MD

Housestaff II

Firas Baidoun, MD
W. Russell Cullinane, DO
Khadeeja Esmail, MD
Maedeh Ganji, MD, MBA
Joseph Geffen, DO, MPH
Rommy Issa, MD
Francois Jo-Hoy, MD
Ozdemir Kanar, MD
Ryan Kunjal, MD
Reem Louli, MD
Matthew McDiarmid, DO
Lauren Stemboroski, DO
Omar Tolaymat, MD
Jeffrey Winder, DO

Housestaff III

Robert Ali, MD, MPH
Farah Al-Saffar, MD
Candice Baldeo, MD
Martin Cerda, DO
Sana Chaudhry, MD
Melissa Dakkak, DO
Ena Gupta, MD, MPH
Abdulwahab Hritani, MD
Roshan Lala, MD
Nimeh Najjar, MD
Rahman Nakshabendi, MD
William Taylor Palfrey, Jr, MD
Joshua Samuel, MD
Daisy Torres-Miranda, MD

Medical School

Debusk College of Osteopathic Medicine
Ross University School of Medicine

Medical School

Lake Erie College of Osteopathic Medicine
Mercer University School of Medicine
Edward Via College of Osteopathic Medicine, Carolinas Campus
University of Florida College of Medicine
Ross University School of Medicine
University of the West Indies, Barbados Faculty of Medical Sciences
Lake Erie College of Osteopathic Medicine
Philadelphia College of Osteopathic Medicine
Nova Southeastern University College of Osteopathic Medicine
Edward Via College of Osteopathic Medicine, Carolinas Campus
Medical University of Lublin
Lake Erie College of Osteopathic Medicine
Edward Via College of Osteopathic Medicine, Virginia Campus
Ross University School of Medicine
Ross University School of Medicine
Ross University School of Medicine
Ross University School of Medicine

Medical School

University of Aleppo Faculty of Medicine
William Carey University College of Osteopathic Medicine
Ross University School of Medicine
St. Matthew's University School of Medicine (Grand Cayman)
Nova Southeastern University College of Osteopathic Medicine
Ross University School of Medicine
University of the West Indies School of Medicine, Trinidad & Tobago
Ross University School of Medicine
University of the West Indies School of Medicine, Trinidad & Tobago
University of Aleppo Faculty of Medicine
Nova Southeastern University College of Osteopathic Medicine
Lake Erie College of Osteopathic Medicine
FIU Herbert Wertheim College of Medicine
Lake Erie College of Osteopathic Medicine

Medical School

University of the West Indies School of Medicine, Trinidad & Tobago
Al-Nahrain University College of Medicine
University of the West Indies School of Medicine, Trinidad & Tobago
Touro University College of Osteopathic Medicine
Ross University School of Medicine
Philadelphia College of Osteopathic Medicine
Lady Hardinge Medical College
Aleppo University Faculty of Medicine
St. George's University School of Medicine
Ross University School of Medicine
Hamdard College of Medicine & Dentistry
Ross University School of Medicine
St. George's University School of Medicine
Ponce School of Medicine

Subspecialty Fellowship Programs

Cardiac Electrophysiology
 Cardiology
 Endocrinology
 Gastroenterology
 Interventional Cardiology
 Infectious Disease
 Medical Oncology
 Nephrology
 Pulmonary Critical Care

Subspecialty Fellow – Housestaff IV

Abdalagani Abakar Baher, MD - Nephrology
 Joshua Anderson, MD - Gastroenterology
 Amit Babbar, MD - Pulmonary Critical Care
 Jason Bellardini, MD – Pulmonary Critical Care
 Juan Chique Figueroa, MD - Nephrology
 Emilio Garcia, MD - Cardiology
 Ramadan Hammoud, MD - Endocrinology
 Saif Ibrahim, MD - Cardiology
 Marilu Jurado Flores, MD - Endocrinology
 Victor Kairouz, MD - Cardiology
 Joshua Levine, MD - Cardiology
 Vinay Minocha, MD – Medical Oncology
 John Mooney, MD - Cardiology
 Virin Ramoutar, MD – Infectious Disease
 Asim Shuja, MD - Gastroenterology
 Dmitry Yaranov, MD – Cardiology

Subspecialty Fellow – Housestaff V

Rabie Adam-Eldien, MD - Nephrology
 Ronald Brown II, MD - Gastroenterology
 Ayham Chamseddin, MD - Endocrinology
 Naila Choudhary, MD - Cardiology
 Matthew Clark, MD - Gastroenterology
 Danisha Figueroa, MD - Infectious Disease
 Amit Gupta, MD - Cardiology
 Adey Hasan, MD - Nephrology
 Jason Hew, MD - Medical Oncology
 Garry McCulloch, MD - Cardiology
 Ke Ning, MD - Medical Oncology
 Nachiket Patel, MD - Cardiology
 Monica Plazarte, DO - Endocrinology
 Avinash Ramdass, MD - Pulmonary Critical Care
 Kasey Treger, DO - Pulmonary Critical Care

Subspecialty Fellow – Housestaff VI

Nicholas Agresti, MD - Gastroenterology
 Khyati Baxi, MD - Cardiology
 Juan Blum-Guzman, MD - Gastroenterology
 Valeria Duarte, MD - Cardiology
 Muhammad Faisal, MD – Pulmonary Critical Care
 Gabriel Faz, MD - Cardiology
 Phuong Ngo, MD - Cardiology
 Asuka Ozaki, DO - Cardiology
 Furqan Siddiqi, MD - Pulmonary Critical Care
 Estela Thanu, DO - Cardiology

Subspecialty Fellow – Housestaff VII

Nephertiti Efeobokhan, MD – Int. Cardiology
 Rahul Sharma, MD – Int. Cardiology

Program Director

Steven Hsu, MD
 Gladys Velarde, MD
 Kent Wehmeier, MD
 Silvio de Melo, Jr, MD
 Dominick Angiolillo, MD
 Michael Sands, MD
 Dat Pham, MD
 Charles Heilig, MD
 J. Davis Cury, MD

Medical School

University of Khartoum Faculty of Medicine
 University of Miami Miller School of Medicine
 St. George’s University School of Medicine
 American University of Antigua
 Universidad Autónoma de Guadalajara Facultad de Medicina
 University of Texas Medical Branch School of Medicine
 University of Balamand Faculty of Medicine and Medical Sciences
 Al-Nahrain University College of Medicine
 Universidad Católica de Santiago de Guayaquil Facultad
 Université Saint Esprit de Kaslik Faculté de Médecine
 University at Buffalo School of Medicine and Biomedical Sciences
 University of the West Indies School of Medicine, Trinidad & Tobago
 University of South Carolina School of Medicine
 University of the West Indies School of Medicine, Trinidad & Tobago
 Khyber Medical College
 Samara State Medical University

Medical School

University of Khartoum Faculty of Medicine
 University of Louisville School of Medicine
 University of Damascus Faculty of Medicine
 Punjab Medical College
 St. Matthew’s University School of Medicine (Belize)
 New York Medical College
 University College of Medical Sciences and Guru Teg Bahadur Hospital
 Al-Quds University Faculty of Medicine
 University of the West Indies School of Medicine, Jamaica
 St. Matthews University School of Medicine
 Ross University School of Medicine
 Rosalind Franklin University of Medicine & Science
 Philadelphia College of Osteopathic Medicine
 University of the West Indies School of Medicine, Trinidad & Tobago
 College of Osteopathic Medicine of the Pacific

Medical School

American University of the Caribbean School of Medicine
 University of South Carolina School of Medicine
 Universidad Católica de Santiago de Guayaquil
 Universidad Favaloro Facultad de Ciencias Medicas
 Dow Medical College
 University of Texas Medical School at Houston
 University of Oklahoma College of Medicine
 Texas College of Osteopathic Medicine
 Sindh Medical University
 Lake Erie College of Osteopathic Medicine

Medical School

Obafemi Awolowo University College of Health Sciences
 St. George’s University School of Medicine

GRADUATE MEDICAL EDUCATION
ACADEMIC YEAR 2016 (7/15 - 6/16)

Highlights

There were several highlights in the training programs for the academic year of 2016. All programs, residency and fellowship alike, continued to produce high quality trainees. The success of the residency and fellowship programs is directly related to the motivated, intelligent trainees combined with the dedicated mentors and teachers. The focus this year was on scholarship, quality improvement initiatives, and successful board certification, but most importantly to produce competent clinicians who will be ready to serve the community or academic arenas.

The residency program had challenges with the ABIM exam, but still meets expectations compared to national averages. The ABIM routinely monitors and reports the three year rolling average of all programs in the country. The core program reports the three year rolling average for its graduates is 83%, which is comparable to the national average of 85%. This is a testament to the hard work the trainees have put into board preparation as well as the teaching contributions from the faculty.

The residency graduating class of 2016 was highly successful in attaining the fellowships of their choice. Eleven of our graduates have sought fellowship training in various specialties, including infectious disease, nephrology, cardiology, pulmonary/critical care, and hematology/oncology. This year notes an unusual number of trainees matching to programs outside of our institution. Many of the programs include University of Miami, Mayo Clinic-Scottsdale, Mayo Clinic-Jacksonville, University of Arizona, University of Virginia, Aurora Health Care-Wisconsin, SUNY Stony Brook, George Washington University, University of Iowa, and of course here. Two graduates pursued their interest in Hospital Medicine, and we were lucky enough to keep two strong leaders as chief residents.

The program has a history of strong leadership, and last academic year was no exception. The heart of the education within the program comes from the chief residents. Drs. Ashby and McCurdy did an impeccable job leading our residents and directing much of the education. Whether it be simulation education, morning report, or supervising wards or clinic; these two delivered high quality teaching. They also played a big role in student education, assisting Dr. Palacio in afternoon teaching sessions or portfolio advising. The program is deeply indebted to them for their sacrifices. Dr. Guzman continues to be a seasoned veteran leader this past academic year. Having drawn off her growing experience from prior years, she was able to make refinements and improvements to the conference curriculum. The new "High Yield Board Topics" series has evolved and received even better reviews than the previous year. Lastly, the program continues to flourish thanks to the guidance of Dr. Carlos Palacio. His accomplishments over the years has led him to be successful in becoming full professor. He continues to mold our educational venues for residents, focusing on the ambulatory experience. This rotation has become a multidisciplinary rotation that requires significant coordination and organization, and in this regard Dr. Palacio has performed expertly. He has made the Sulzbacher experience an opportunity for trainees to work in an environment where they can truly appreciate disparities in healthcare. He also continues to work as clerkship director, and his leadership has resulted in one of the most popular medical student rotations.

As in years past, the Department of Medicine was successful again in receiving several Exemplary Teacher Awards. This year's 6 faculty recipients are as follows: Drs. Dave Cury, Jeff House, Nilmarie Guzman, Dat Pham, Elisa Sottile, and Michael Sands. Dr. Robert Ali was the receipt for the resident exemplary teacher award.

Residents and fellows have always been enthusiastic participants in the campus's annual research day, and this year was no different. Of the roughly 100 poster presentations, 30% were from the fellows and residents of the Department of Medicine. Of the platform presentations, Dr. Lauren Stemboroski was the

3rd place prize winner and among the poster presentations, Dr. Gabriel Faz was the 2nd place prize winner and Dr. Monica Plazarte received the 4th place prize. The residents have been successful beyond just local research presentations. Residents continue to gravitate toward high quality conferences, including the Duval County Medical Society, Florida Chapter American College of Physicians Meetings (both spring and fall), American College of Cardiology, American Heart Association, American Federation for Medical Research Southern Region, Southern Hospital Medicine, American College of Chest Physicians, Digestive Disease Week, American Thoracic Society, and the American College of Gastroenterology annual meetings. Residents continue to impress in sheer volume of scholarly endeavors, producing greater than 100 presentations, publications, abstracts, and grants, and have again eclipsed the year's previous accomplishment which had been the highest mark to date. One new innovation was the Research Club that was initiated near the end of the academic year. The purpose of this group, comprised of motivated residents and faculty, was to promote and facilitate resident research projects. Although it was too new to assess its productivity, it has great reviews by the participating residents.

Subspecialty Fellowship Programs: Despite many challenges in the ever changing climate of fellowship training, the fellowship programs continue to have success in recruitment, education, scholarship and graduation. Some programs have been successful in keeping their fellows as faculty over the last several years and we expect that future classes will breed similar results. Programs continue to solidify their leadership with the appointment of Associate Program Directors. These additions help stabilize programs and relieve the stress for Program Directors, Program Administrators, and trainees. Fellowship programs continue to work toward innovative strategies for teaching, research, recruitment, and even expansion.

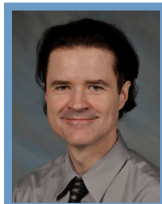
Student Education: Dr. Carlos Palacio championed the medical student education within the department of medicine. Under his leadership, medical student clerkship has been a strength within the department. Students not only from University of Florida, but from outside institutions as well, continued to rate the training experience as one of high quality and a nurturing environment. This is true for not only the general medical experiences on the inpatient and outpatient settings, but also the subspecialty rotations. Visiting students rotated on internal medicine, inpatient cardiology, MICU, endocrinology, infectious disease, and nephrology. As has been true in years past, students that work with us often like the experience so much that they become residents in our program.

LISTING OF PROGRAM LEADERSHIP



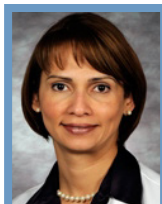
Jeff House, D.O., Associate Professor and Program Director

Medical School / Graduation date	Nova Southeastern University	1997
Rotating Internship	Broward General Hospital	1998
Internship/residency and year	University of Florida Jacksonville	2001



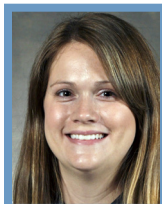
Carlos Palacio, MD, Professor, Associate Program Director and Clerkship Director

Medical School / Graduation date	University of Miami	1993
Internship/residency and year	University of Florida Jacksonville	1996
Chief Medical Resident	University of Florida Jacksonville	1997



Nilmarie Guzman, MD, Assistant Professor and Associate Program Director

Medical School / Graduation date	Ponce School of Medicine	1996
Internship/residency and year	Damas Hospital	1999
Subspecialty training and year	Infectious Diseases/University of Florida Jacksonville	2006



Tracy Thompson Ashby, MD, Post-doctoral Associate and Chief Medical Resident

Medical School / Graduation date	Debusk College of Osteopathic Medicine	2012
Internship/residency and year	University of Florida Jacksonville	2015
Chief Medical Resident	University of Florida Jacksonville	2016



Kaitlin Rose McCurdy, MD, Post-doctoral Associate and Chief Medical Resident

Medical School / Graduation date	Ross University School of Medicine	2012
Internship/residency and year	University of Florida Jacksonville	2015
Chief Medical Resident	University of Florida Jacksonville	2016

PUBLICATIONS

Sorted by category (published manuscripts, published abstracts, presentations and grants), and by year within each category. Residents are underlined.

Published manuscripts

Hritani A, Baldeo C, Percy. Structural valve deterioration as an unexpected complication following chemo-radiation therapy. J Am Coll Cardiol. 2016;67(13_S):1089.

Ali R, Perez-Downes J, Baidoun F, Al Turk B, Isache C, Mohan G, Perniciaro C. Challenges in treating secondary syphilis osteitis in an immunocompromised patient with a penicillin allergy: case report and review of the literature. Case Rep Infect Dis. 2016;2016:4983504. PMID: 27313920

Baldeo C, Hritani AW, Ali R, Chaudhry S, Khawaja FN. Malignant perivascular epithelioid cardiac sarcomas: a case report and a review of the literature. Case Rep Cardiol. 2015;2015:258140. PMID: 25977823

Baldeo C, Hritani AW, Baldeo C, Percy R. Does chemo-radiation predispose to structural valve deterioration? Int J Cardiol. 2016 May 15;211:53-4. PMID: 26974696

Hritani AW, Jo-Hoy F, Siddiqi A, Baldeo C, Poenariu A. Acute renal infarction pathogenesis and atrial fibrillation: case report and literature review. World J Nephrol Urol. 2016;5(1):11-15

Berry AC, Nakshabendi R, Kanar O, Hamer S. Meckel's diverticulum harboring a gastrointestinal stromal tumor. The Ochsner Journal. 2016 ePub 28 March 2016

Brown R 2nd, Samuel J, Parmar K, Shuja S, deMelo SW Jr. Sodium polystyrene sulfonate-induced esophageal ulcer. Gastrointest Endosc. 2016 Mar;83(3):664-5. PMID: 26422977

Kanar O, Nakshabendi R, Jiwani F, Liu Y, Allsopp W, Berry AC. Giardiasis: a malignant mimicker? Intern Emerg Med. 2016 Feb;11(1):149-51. PMID: 26055831

Geffen J, Berry AC, Nakshabendi R. Initial presentation of a pancreatic mass. Gastroenterology. 2016 Feb;150(2):e7-8. PMID: 26718178

Nakshabendi R, Munoz J, Berry A, John B, Choice of sedation and its impact on adenoma detection rate in screening colonoscopies. Ann Gastroenterol. 2016 Jan-Mar;29(1):50-5. PMID: 26752950

Baidoun F, Issa R, Ali R, Al-Turk B. Acute unilateral blindness from superior ophthalmic vein thrombosis: a rare presentation of nephrotic syndrome from class iv lupus nephritis in the absence of antiphospholipid or anticardiolipin syndrome. Case Rep Hematol. 2015;2015:413975. PMID: 26858847

Kanar O, Nakshabendi R, Berry AC. Colonic mucosal schwann cell hamartoma on incidental screening colonoscopy. J Gastrointest Liver Dis. 2015 Dec;24(4):411. PMID: 26697564

Alkaddour A, McGaw C, Hritani R, Palacio C, Nakshabendi R, Berry AC, Munoz JC, Vega K. African American ethnicity is not associated with development of Barrett's oesophagus after erosive oesophagitis. Dig Liver Dis. 2015 Oct;47(10):853-6. PMID: 26188839

Berry AC, Nakshabendi R, Kanar O, Abidali H, Nakshabandi A, Baltz AC, Kwiatt JT. Dysphagia as the sole initial presentation of celiac disease. International Journal of Celiac Disease. Vol. 3, No. 3, 2015, pp 108-109

Brookins SM, Ormenisan C, Makary RF, Monteiro CI, James LR. The bumpy lumpy kidney that dumped protein. Kidney Int. 2015 Oct;88(4):917. PMID: 26422628

Dakkak M, Baxi K, Patel A. Beneficial effects of isoproterenol and quinidine in the treatment of ventricular fibrillation in brugada syndrome. Case Rep Cardiol. 2015;2015:753537. PMID: 26171254

Dakkak M, Cullinane WR Jr, Ramoutar VR. Subdural empyema complicating bacterial meningitis: a challenging diagnosis in a patient with polysubstance abuse. *Case Rep Med.* 2015;2015:931819. PMID: 26543484

Gupta E, Kunjal R, Cury J. Acute on chronic hyponatremia due to valproic acid toxicity. *J Clin Med Res.* 2015 Sep;7(9):717-9. PMID: 26251688

Al-Saffar F, Gupta E, Siddiqi F, Faisal M, Jones LM, Seeram V, Louis M, Cury JD, Bajwa AA, Shujaat A. Is there any association between peep and upper extremity dvt? *Crit Care Res Pract.* 2015;2015:614598 PMID: 25922762

Published abstracts

Cerda M, Bissell B, Jacob R. Brevundimonas bacteremia in a patient with acute intermittent porphyria. *Ochsner J.* 2016 Spring;16(1):e1-e42.

Cerda M, Touchan J, Chapman D. Spontaneous subclavian artery dissection presenting as a non-st-elevation myocardial infarction. *Ochsner J.* 2016 Spring;16(1):e1-e42.

Al-Saffar F, Ibrahim S, Winder J, Perez-Downes J. Unanticipated metastatic melanoma concealed in shingles. *Ochsner J.* 2016 Spring;16(1):e1-e42.

Baldeo C, Ali R, Cullinane WR, Hritani AW, Babbar A. Hematuria and Vitamin C deficiency as an exacerbating factor. *Ochsner J.* 2016 Spring;16(1):e1-e42.

Baldeo C, Ali R, Cullinane WR, Hritani AW, Poenariu A. Can hypertryglyceridemia cause hyperphosphatemia. *Ochsner J.* 2016 Spring;16(1):e1-e42.

Ali R, Baldeo C, Stemboroski L, Perez-Downes J, Cullinane WR, Pham D, Siddiqi A. Multiple myeloma presenting as a sternal plasmacytoma. *Ochsner J.* 2016 Spring;16(1):e1-e42.

Ali R, Baldeo C, Stemboroski L, Perez-Downes J, Zaiden R, Siddiqi A. Familial adenomatous polyposis – what is appropriate screening? *Ochsner J.* 2016 Spring;16(1):e1-e42.

Jo-Hoy F, Al-Saffar F, Nakshabendi R, Ramtahal R, Hritani R, Hritani AW. Takotsubo cardiomyopathy and cesarean section: a review of the literature. *Ochsner J.* 2016 Spring;16(1):e1-e42.

Winder J, Jo-Hoy F, Issa R. An unusual association with type 4 renal tubular acidosis. *Ochsner J.* 2016 Spring;16(1):e1-e42.

Stemboroski L, Ali R, Cullinane W, Baldeo C, Sottile E. Rhinovirus complicating the diagnosis of leukocytoclastic-associated acute respiratory distress syndrome. *Ochsner J.* 2016 Spring;16(1):e1-e42.

Stemboroski L, Winder J, Ali R, Sottile E. An unusual presentation of bacteremia due to an emerging opportunist. *Ochsner J.* 2016 Spring;16(1):e1-e42.

Perez-Downes J, Hritani A, Baldeo C, Antoun P. Acute coronary syndrome in the setting of an amphetamine-containing weight loss dietary supplement. *Ochsner J.* 2016 Spring;16(1):e1-e42.

Perez-Downes J, Leon A, Ali R. Pericardial effusion in AIDS: elusive etiology of a grim prognostic indicator. *Ochsner J.* 2016 Spring;16(1):e1-e42.

Cullinane W, Baldeo C, Ali R. An unlikely case of central diabetes insipidus. *Ochsner J.* 2016 Spring;16(1):e1-e42.

Cullinane W, Ali R, Stemboroski L, Baldeo C, Sottile E. A case of chronic pseudomonas septic knee arthritis with extracapsular extension. *Ochsner J.* 2016 Spring;16(1):e1-e42.

Kanar O, Harris C, Winder J, Nakshabendi R, Aung W. An unusual case of seizure in a patient with newly diagnosed human immunodeficiency virus. *Ochsner J.* 2016 Spring;16(1):e1-e42.

Kunjal R, Ramadoo R, Mohammed S, Makary R, James L. A rare case of renal perivascular epithelioid cell tumor. *Ochsner J.* 2016 Spring;16(1):e1-e42.

Hritani AW, Patel P, Miller A, Paterick T. Stress-induced cardiomyopathy and obstructive pulmonary disease exacerbation: a case series. *Ochsner J.* 2016 Spring;16(1):e1-e42.

McCulloch G, Hritani A, Dakkak M, Patel A, Patel H, Baldeo C, Klassen C, Lavine S. Can coronary artery calcium scoring in non-gated chest computed tomography be used to rule out ischemia on myocardial perfusion imaging? *Ochsner J.* 2016 Spring;16(1):e1-e42.

Winder J, Cerda M, Perez-Downes J, Kanar O, Ali R, Baxi K. Apical hypertrophic cardiomyopathy in the African American population. *Ochsner J.* 2016 Spring;16(1):e1-e42.

Ali R, Baldeo C, et al. Idiopathic chronic eosinophilic pneumonia - a diagnostic conundrum. *Am J Respir Crit Care Med,* 191, A1476.

Hritani AW, Baldeo C, Baldeo C, Percy R. Structural valve deterioration as an unexpected complication following chemoradiation therapy. *1089 JACC* April 5, 2016 Volume 67, Issue 13

Ali R, Baldeo C, Chique Figueroa J, Poenariu A, Baidoun F. HIV-associated thrombotic microangiopathy – is this a clinically distinct entity from thrombotic thrombocytopenic purpura? *J Invest Med.* 2016;64(2):493.

Ali R, Baldeo C, Perez J, Isache C. Syphilis osteitis in an immunocompromised host. *J Invest Med.* 2016;64(2):662.

Al-Saffar F, Bennin C, Kim R. Differences in ventricular arrhythmia burden between high versus low potency statins in patients with non-ischemic cardiomyopathy. *J Invest Med.* 2016;64(2):488-9.

Baldeo C, Ali R, Baldeo C, Seeram V. A rare cause of pleural effusions. *J Invest Med.* 2016;64(2):494-5.

Baldeo C, Hritani A, Ali R, Baldeo C, Percy R. Chemo-radiation and cardiac valve deterioration. *J Invest Med.* 2016;64(2):503-4.

Chaudhry S, Moore O, Plante J, Silliman S. Primitive neuroectodermal tumor presenting with diffuse leptomeningeal enhancement and increased intracranial pressure in an 18 year old female. *J Invest Med.* 2016;64(2):668.

Fakhar K. A case of primary localized conjunctival amyloidosis. *J Invest Med.* 2016;64(2):694-5.

Patel P, Ramoutar V. Ventral post-traumatic pseudolipoma in a surfer. *J Invest Med.* 2016;64(2):496-7.

Al-Turk B, Ali R, Cisneros M, Reddy P. An insidious presentation of aortic root dilatation. *J Invest Med.* 2016;64(2):523.

Baidoun F, Issa R, Ali R, Al-Turk B. Superior ophthalmic vein thrombosis: a rare presentation of nephrotic syndrome from class iv lupus nephritis. *J Invest Med.* 2016;64(2):528.

Esmail K, Al-Turk B, Paterick T. An interesting case of Takotsubo cardiomyopathy; an interesting case of altered mental status. *J Invest Med.* 2016;64(2):518-9.

Esmail K, Reddy P. An interesting case of altered mental status. *J Invest Med.* 2016;64(2):574.

Gupta E, Kunjal R, Seeram V. Fatal gas in the stomach? J Invest Med. 2016;64(2):567.

Gupta E, Baldeo C, Cury J. Camouflaging as acute chest syndrome. J Invest Med. 2016;64(2):624.

Issa R, Kanar O, McDiarmid M, Nakshabendi R, Winder JW, Harris C, House J. Fentanyl patch ingestion leading to lifelong HD. J Invest Med. 2016;64(2):630.

Jo-Hoy F, Tolaymat O, Kunjal R, James L. Tuberos sclerosi and bilateral renal angiomyolipomas: a case report and literature review of emerging treatment strategies. J Invest Med. 2016;64(2):631.

Kanar O, Issa R, Nakshabendi R, Berry A, Harris C, Winder JW. An unusual case of orbital cellulitis. J Invest Med. 2016;64(2):569.

Nakshabendi R, Kanar O, Palfrey WT, Issa R, Berry A, Nakshabendi I, House J. Colonic spirochetosis presenting as bright red blood per rectum. J Invest Med. 2016;64(2):536.

Palfrey WT, Patel P, Nakshabendi R, Ramoutar V, Palacio C. An unfortunate case of aortic tissue infection following endovascular repair. J Invest Med. 2016;64(2):569-70.

Palfrey WT, Jo-Hoy F, Jacob R. An unusual adverse effect of a novel oral anticoagulant. J Invest Med. 2016;64(2):515-6.

Najjar N, Palfrey WT, Patel P, Faisal M, Seeram V, Cury J. A case of ILD as a consequence of volatile anesthetic exposure. J Invest Med. 2016;64(2):625-6.

Richardson A, Tolaymat O. A case of gram negative enterobacter cloacae infective endocarditis. J Invest Med. 2016;64(2):571.

Samuel J, Choudhary N, Baidoun F, Bueno E, Antoun P, Kim R. Cardiogenic syncope due to his-Purkinje conduction disease in a young woman with no cardiac structural defects. J Invest Med. 2016;64(2):527-8.

Stemboroski L, Brown R, de Melo S, Scolapio J, Malespin M. Medical management of severe food impaction. J Invest Med. 2016;64(2):538.

Gupta E, Siddiqi F et al. Effect of an aspirin on prevention of venous thromboembolism in critically ill mechanically ventilated patients. CHEST, October 2015. Vol 145 Meeting abstracts

Presentations

Stemboroski L. Medical management of severe food impaction. Poster presentation at: University of Florida College of Medicine Jacksonville Research Day; Jacksonville, FL. May 2016.

Steinberg S. A rare case of dysphagia as a complication of acute esophageal necrosis. Poster presentation at: University of Florida College of Medicine Jacksonville Research Day; Jacksonville, FL. May 2016.

Richardson A. A case of gram negative enterobacter cloacae infective endocarditis. Poster presentation at: University of Florida College of Medicine Jacksonville Research Day; Jacksonville, FL. May 2016.

Perez-Downes J. Selective serotonin reuptake inhibitors: an uncommon cause of rhabdomyolysis. Poster presentation at: University of Florida College of Medicine Jacksonville Research Day; Jacksonville, FL. May 2016.

Palfrey WT. An unusual adverse effect of a novel oral anticoagulant. Poster presentation at: University of Florida College of Medicine Jacksonville Research Day; Jacksonville, FL. May 2016.

Palfrey WT. An unfortunate case of aortic tissue infection following endovascular repair. Poster presentation at: University of Florida College of Medicine Jacksonville Research Day; Jacksonville, FL. May 2016.

Najjar N. A case of interstitial lung disease as a consequence of volatile anesthetic exposure. Poster presentation at: University of Florida College of Medicine Jacksonville Research Day; Jacksonville, FL. May 2016.

Lala R. HIV-associated thrombotic microangiopathy - is this a clinically distinct entity from thrombotic thrombocytopenic purpura? Poster presentation at: University of Florida College of Medicine Jacksonville Research Day; Jacksonville, FL. May 2016.

Kunjal R. Spontaneous bacterial empyema: the thoracic equivalent of spontaneous bacterial peritonitis. Poster presentation at: University of Florida College of Medicine Jacksonville Research Day; Jacksonville, FL. May 2016.

Kanar O. An unusual case of seizure in a newly diagnosed hiv patient. Poster presentation at: University of Florida College of Medicine Jacksonville Research Day; Jacksonville, FL. May 2016.

Jo-Hoy E. Tuberos sclerosi and bilateral renal angiomyolipomas: a case report and literature review of emerging treatment strategies. Poster presentation at: University of Florida College of Medicine Jacksonville Research Day; Jacksonville, FL. May 2016.

Harris C. Chronic muscle weakness - an insidious case of eosinophilic myositis. Poster presentation at: University of Florida College of Medicine Jacksonville Research Day; Jacksonville, FL. May 2016.

Gupta E. Fatal gas in stomach. Poster presentation at: University of Florida College of Medicine Jacksonville Research Day; Jacksonville, FL. May 2016.

Gupta E. Camouflaging as acute chest syndrome. Poster presentation at: University of Florida College of Medicine Jacksonville Research Day; Jacksonville, FL. May 2016.

Esmail K. An interesting case of altered mental status. Poster presentation at: University of Florida College of Medicine Jacksonville Research Day; Jacksonville, FL. May 2016.

Esmail K. An interesting case of takotsubo cardiomyopathy. Poster presentation at: University of Florida College of Medicine Jacksonville Research Day; Jacksonville, FL. May 2016.

Chaudhry S. Fentanyl patch ingestion leading to lifelong hemodialysis. Poster presentation at: University of Florida College of Medicine Jacksonville Research Day; Jacksonville, FL. May 2016.

Cerda M. An unusual case of hypercapnic respiratory failure. Poster presentation at: University of Florida College of Medicine Jacksonville Research Day; Jacksonville, FL. May 2016.

Baldeo C. Does chemo-radiation predispose to structural valve deterioration? Poster presentation at: University of Florida College of Medicine Jacksonville Research Day; Jacksonville, FL. May 2016.

Baldeo C. Can hypertriglyceridemia cause hyperphosphatemia? Poster presentation at: University of Florida College of Medicine Jacksonville Research Day; Jacksonville, FL. May 2016.

Baldeo C. A case of urinothorax. Poster presentation at: University of Florida College of Medicine Jacksonville Research Day; Jacksonville, FL. May 2016.

Baldeo C. Hematuria and vitamin c deficiency as an exacerbating factor. Poster presentation at: University of Florida College of Medicine Jacksonville Research Day; Jacksonville, FL. May 2016.

Baidoun F. Superior ophthalmic vein thrombosis: a rare presentation of nephrotic syndrome from

class iv lupus nephritis. Poster presentation at: University of Florida College of Medicine Jacksonville Research Day; Jacksonville, FL. May 2016.

Al-Turk B. To cath or not to cath: rare cardiographic presentation of acute myocardial infarction. Poster presentation at: University of Florida College of Medicine Jacksonville Research Day; Jacksonville, FL. May 2016.

Ali R. Secondary syphilis osteitis in an immunocompromised host. Poster presentation at: University of Florida College of Medicine Jacksonville Research Day; Jacksonville, FL. May 2016.

Lala R. HIV-associated thrombotic microangiopathy – is this a clinically distinct entity from thrombotic thrombocytopenic purpura? Poster presentation at: University of Florida College of Medicine Jacksonville Research Day; Jacksonville, FL. May 2016.

Najjar N. A case of ILD as a Consequence of volatile anesthetic exposure. Poster presentation at: University of Florida College of Medicine Jacksonville Research Day; Jacksonville, FL. May 2016.

Palfrey W. An unfortunate case of aortic tissue infection following endovascular repair. Poster presentation at: University of Florida College of Medicine Jacksonville Research Day; Jacksonville, FL. May 2016.

Najjar N. A case of ILD as a Consequence of volatile anesthetic exposure. Poster presentation at: American Thoracic Society; San Francisco, CA. May 2016.

Kanar O. Evaluation of accuracy and consistency between symptom checkers for diagnosis and triage of gastrointestinal symptoms. Poster presentation at: Digestive Disease Week; San Diego, CA. May 2016.

Nakshabendi R. A case of gastrointestinal histoplasmosis (GIH). Poster presentation at: Digestive Disease Week; San Diego, CA. May 2016.

Nakshabendi R. Choice of sedation and its impact on adenoma detection rate (ADR). Results from a retrospective study. Poster presentation at: Digestive Disease Week; San Diego, CA. May 2016.

Gupta E. Incidence, characteristics and mortality of adult mechanically ventilated patients with and without ARDS in Peru. Poster presentation at: American Thoracic Society; San Francisco, CA. May 2016.

Hritani A. Structural valve deterioration as an unexpected complication following chemoradiation therapy. Poster presentation at: American College of Cardiology; Chicago, IL. April 2016.

Harris C. A curious case of proximal muscle weakness. Oral presentation at: Florida Chapter American College of Physicians; Orlando, FL. April 2016.

Rizq K. MTHFR, B12 deficiency, hemolysis, and hyperhomocysteinemia: tug of war? Oral presentation at: Florida Chapter American College of Physicians; Orlando, FL. April 2016.

Al-Turk B. To cath or not to cath..." rare cardiographic presentation of acute myocardial infarction. Poster presentation at: Florida Chapter American College of Physicians; Orlando, FL. April 2016.

Kunjal R. Lady Windermere: an unusual name to a rare syndrome. Poster presentation at: Florida Chapter American College of Physicians; Orlando, FL. April 2016.

Perez-Downes J. Selective serotonin reuptake inhibitors: an uncommon cause of rhabdomyolysis. Poster presentation at: Florida Chapter American College of Physicians; Orlando, FL. April 2016.

Ali R. Syphilis osteitis in an immunocompromised host. Oral presentation at: American Federation of Medical Research Southern Regional Meeting; New Orleans, LA. February 2016.

Ali R. HIV-associated thrombotic microangiopathy – is this a clinically distinct entity from thrombotic thrombocytopenic purpura? Oral presentation at: American Federation of Medical Research Southern Regional Meeting; New Orleans, LA. February 2016.

Al-Saffar F. Differences in ventricular arrhythmia burden between high versus low potency statins in patients with non-ischemic cardiomyopathy. Oral presentation at: American Federation of Medical Research Southern Regional Meeting; New Orleans, LA. February 2016.

Baldeo C. A rare cause of pleural effusions. Oral presentation at: American Federation of Medical Research Southern Regional Meeting; New Orleans, LA. February 2016.

Baldeo C. Chemo-radiation and cardiac valve deterioration. Cardiovascular Case Report Award Winner. Oral presentation at: American Federation of Medical Research Southern Regional Meeting; New Orleans, LA. February 2016.

Chaudhry S. Primitive neuroectodermal tumor presenting with diffuse leptomeningeal enhancement and increased intracranial pressure in an 18 year old female. Oral presentation at: American Federation of Medical Research Southern Regional Meeting; New Orleans, LA. February 2016.

Fakhar K. A case of primary localized conjunctival amyloidosis. Oral presentation at: American Federation of Medical Research Southern Regional Meeting; New Orleans, LA. February 2016.

Patel P. Ventral post-traumatic pseudolipoma in a surfer. Oral presentation at: American Federation of Medical Research Southern Regional Meeting; New Orleans, LA. February 2016.

Al-Turk B. An insidious presentation of aortic root dilatation. Poster presentation at: American Federation of Medical Research Southern Regional Meeting; New Orleans, LA. February 2016.

Baidoun F. Superior ophthalmic vein thrombosis: a rare presentation of nephrotic syndrome from class iv lupus nephritis. Poster presentation at: American Federation of Medical Research Southern Regional Meeting; New Orleans, LA. February 2016.

Esmail K. An interesting case of altered mental status. Poster presentation at: American Federation of Medical Research Southern Regional Meeting; New Orleans, LA. February 2016.

Esmail K. An interesting case of Takotsubo cardiomyopathy; An interesting case of altered mental status. Poster presentation at: American Federation of Medical Research Southern Regional Meeting; New Orleans, LA. February 2016.

Gupta E. Camouflaging as acute chest syndrome. Poster presentation at: American Federation of Medical Research Southern Regional Meeting; New Orleans, LA. February 2016.

Gupta E. Fatal gas in the stomach? Poster presentation at: American Federation of Medical Research Southern Regional Meeting; New Orleans, LA. February 2016.

Issa R. Fentanyl patch ingestion leading to lifelong HD. Poster presentation at: American Federation of Medical Research Southern Regional Meeting; New Orleans, LA. February 2016.

Jo-Hoy F. Tuberous sclerosis and bilateral renal angiomyolipomas: a case report and literature review of emerging treatment strategies. Poster presentation at: American Federation of Medical Research Southern Regional Meeting; New Orleans, LA. February 2016.

Kanar O. An unusual case of orbital cellulitis. Poster presentation at: American Federation of Medical Research Southern Regional Meeting; New Orleans, LA. February 2016.

Nakshabendi R. Colonic spirochetosis presenting as bright red blood per rectum. Poster presentation at: American Federation of Medical Research Southern Regional Meeting; New Orleans, LA. February 2016.

Najjar N. A case of ILD as a consequence of volatile anesthetic exposure. Poster presentation at: American Federation of Medical Research Southern Regional Meeting; New Orleans, LA. February 2016.

Palfrey W. An unfortunate case of aortic tissue infection following endovascular repair. Poster presentation at: American Federation of Medical Research Southern Regional Meeting; New Orleans, LA. February 2016.

Palfrey W. An unusual adverse effect of a novel oral anticoagulant. Poster presentation at: American Federation of Medical Research Southern Regional Meeting; New Orleans, LA. February 2016.

Richardson A. A case of gram negative enterobacter cloacae infective endocarditis. Poster presentation at: American Federation of Medical Research Southern Regional Meeting; New Orleans, LA. February 2016.

Samuel J. Cardiogenic syncope due to his–Purkinje conduction disease in a young woman with no cardiac structural defects. Poster presentation at: American Federation of Medical Research Southern Regional Meeting; New Orleans, LA. February 2016.

Stemboroski L. Medical management of severe food impaction. Poster presentation at: American Federation of Medical Research Southern Regional Meeting; New Orleans, LA. February 2016.

Kunjai R. POEMS Syndrome (polyneuropathy, organomegaly, endocrinopathy, monoclonal gammopathy and skin changes): a rare and often missed diagnosis. Poster presentation at: Duval County Medical Society Annual Meeting; Jacksonville, FL. December 2015.

Palfrey WT. An unusual adverse effect of a novel oral anticoagulant. Poster presentation at: Duval County Medical Society Annual Meeting; Jacksonville, FL. December 2015.

Gupta E. Predictors of post-operative myocardial infarction in patients with previous myocardial infarction undergoing major noncardiac surgery: analysis of 30-day follow up data from the ACS-NSQIP. Poster presentation at: American Heart Association Meeting; Chicago, IL. November 2015.

Ali R. Multiple myeloma presenting as a sternal plasmacytoma. Poster presentation at: Southern Hospital Medicine Annual Conference; New Orleans, LA. October 2015.

Ali R. Familial adenoma polyposis - what is appropriate screening? Poster presentation at: Southern Hospital Medicine Annual Conference; New Orleans, LA. October 2015.

Ali R. Rhinovirus complicating the diagnosis of leukocytoclastic associated acute respiratory distress syndrome. Poster presentation at: Southern Hospital Medicine Annual Conference; New Orleans, LA. October 2015.

Ali R. An unusual presentation of bacteremia due to an emerging opportunist. Poster presentation at: Southern Hospital Medicine Annual Conference; New Orleans, LA. October 2015.

Al-Saffar F. Unanticipated metastatic melanoma concealed in shingles. Poster presentation at: Southern Hospital Medicine Annual Conference; New Orleans, LA. October 2015.

Baldeo C. Hematuria and vitamin c deficiency as an exacerbating factor. Poster presentation at: Southern Hospital Medicine Annual Conference; New Orleans, LA. October 2015.

Baldeo C. Can Hypertriglyceridemia cause Hyperphosphatemia? Poster presentation at: Southern Hospital Medicine Annual Conference; New Orleans, LA. October 2015.

Cerda M. Spontaneous subclavian artery dissection presenting as a non-st-elevation myocardial infarction. Poster presentation at: Southern Hospital Medicine Annual Conference; New Orleans, LA. October 2015.

Cullinane W. An unlikely case of central diabetes insipidus. Poster presentation at: Southern Hospital Medicine Annual Conference; New Orleans, LA. October 2015.

Cullinane W. A case of chronic pseudomonas septic knee arthritis with extra-capsular extension. Poster presentation at: Southern Hospital Medicine Annual Conference; New Orleans, LA. October 2015.

Harris C. An unusual association with type iv renal tubular acidosis. Poster presentation at: Southern Hospital Medicine Annual Conference; New Orleans, LA. October 2015.

Hritani A. Stress-induced cardiomyopathy and obstructive pulmonary disease exacerbation - a case series. Poster presentation at: Southern Hospital Medicine Annual Conference; New Orleans, LA. October 2015.

Jo-Hoy F. Takotsubo cardiomyopathy and cesarean section - a review of the literature. Poster presentation at: Southern Hospital Medicine Annual Conference; New Orleans, LA. October 2015.

Kanar O. An unusual case of seizure in a newly diagnosed hib patient. Poster presentation at: Southern Hospital Medicine Annual Conference; New Orleans, LA. October 2015.

Kunjal R. A rare case of renal perivascular epithelioid cell tumor. Poster presentation at: Southern Hospital Medicine Annual Conference; New Orleans, LA. October 2015.

Kunjal R. Severe hyponatremia due to valproic acid toxicity. Honorary Mention. Poster presentation at: Southern Hospital Medicine Annual Conference; New Orleans, LA. October 2015.

Perez-Downes J. Pericardial effusion in aids_elusive etiology of a grim prognostic indicator. Poster presentation at: Southern Hospital Medicine Annual Conference; New Orleans, LA. October 2015.

Perez-Downes J. Acute coronary syndrome in the setting of amphetamine containing weight loss dietary supplement. Poster presentation at: Southern Hospital Medicine Annual Conference; New Orleans, LA. October 2015.

Stemboroski L. An unusual presentation of bacteremia due to an emerging opportunist. Poster presentation at: Southern Hospital Medicine Annual Conference; New Orleans, LA. October 2015.

Stemboroski L. Rhinovirus complicating the diagnosis of leukocytoclastic associated acute respiratory distress syndrome. Poster presentation at: Southern Hospital Medicine Annual Conference; New Orleans, LA. October 2015.

Winder J. An unusual association with type iv renal tubular acidosis. Poster presentation at: Southern Hospital Medicine Annual Conference; New Orleans, LA. October 2015.

Winder J. Apical hypertrophic cardiomyopathy in the African American population. Poster presentation at: Southern Hospital Medicine Annual Conference; New Orleans, LA. October 2015.

Gupta E. Effect of aspirin on prevention of venous thromboembolism in critically ill mechanically ventilated patients. Poster presentation at: American College of Chest Physicians Annual Meeting; Montreal, Canada. October 2015.

Dakkak M. Takotsubo cardiomyopathy secondary to theophylline toxicity-old drug with new side effect. Poster presentation at: American College of Chest Physicians Annual Meeting; Montreal, Canada. October 2015.

Kanar O. Colonic mucosal schwann cell hamartoma incidentally found on screening colonoscopy. Poster presentation at: American College of Gastroenterology Meeting; Honolulu, HA. October 2015.

Kanar O. Cryoglobulinemia: a potential mimicker of autoimmune hepatitis. Poster presentation at: American College of Gastroenterology Meeting; Honolulu, HA. October 2015.

Nakshabendi R. Sump syndrome: keeping the diagnosis relevant in the ercp-laden world. Poster presentation at: American College of Gastroenterology Meeting; Honolulu, HA. October 2015.

Nakshabendi R. Ascorbic acid deficiency resulting in bleeding per rectum. Poster presentation at: American College of Gastroenterology Meeting; Honolulu, HA. October 2015.

Stemboroski L. Isolated sarcoidosis of the gastrointestinal tract involving multiple gi sites presenting as chronic diarrhea. Poster presentation at: American College of Gastroenterology Meeting; Honolulu, HA. October 2015.

Patel P. A case of reverse Takotsubo cardiomyopathy. Poster presentation at: Florida Chapter American College of Physicians; Tampa, FL. September 2015.

Winder J. Sinonasal sarcoidosis: an unusual cause of epistaxis. Poster presentation at: Florida Chapter American College of Physicians; Tampa, FL. September 2015.

Cerda M. Subclavian artery dissection presenting as non-ST elevation myocardial infarction. Poster presentation at: Florida Chapter American College of Physicians; Tampa, FL. September 2015.

Grants

Geffen J. A Randomized, Double-Blind, Placebo-Controlled Study of Rosuvastatin on Inflammatory Bowel Disease. Project Period: July 2015-June 2016. Sponsor: University of Florida College of Medicine - Jacksonville. Role: Principal Investigator.

HONORS AND AWARDS

Julio Perez-Downes, DO	Intern of the Year
Robert Ali, MD	Resident of the Year
Muhammad Faisal, MD	Fellow of the Year
Vandana Seeram, MD	Teacher of the Year
Candice Baldeo, MD	Best Conference Attendance
Farah Al-Saffar, MD	Procedure Completion
Farah Al-Saffar, MD	ACP Resident of the Year

Mario Cisneros, DO; Grant Nelson, DO; and Taylor Palfrey, MD competed in the American College of Physicians, Florida Chapter - Doctor's Dilemma™ State Team.

Robert Ali, MD has been awarded the resident UF College of Medicine Exemplary Teachers Award.

James Cury, MD; Nilmarie Guzman, MD; Jeff House, DO; Dat Pham, MD; Michael Sands, MD; Elisa Sottile, MD; are recipients of the faculty UF College of Medicine Exemplary Teaching Award.

Rahman Nakshabendi, MD was awarded the Malcolm T. Foster, Jr., MD Scholarship Award.

ENDOWMENTS AND GIFTS

The Anne and Max Michael, Jr. Education Fund, Established 2006, by Mrs. Anne Michael

CLASS OF 2016 DESTINATIONS**Chief Medical Residents**

Tracy Ashby, DO
Kaitlin McCurdy, MD

Professional Status

Pulmonary CC Fellowship
Global Health Fellowship

Location

University of Florida Jacksonville
University of Florida Gainesville

Preliminary Residents

Kaihan Fakhur, MD
Amie Leon, DO
Ryan Moorhouse, DO

Professional Status

Ophthalmology Residency
Radiology Residency
Neurology Residency

University of Florida Gainesville
University of Florida Jacksonville
University of Florida Jacksonville

Categorical Residents

Farah Al-Saffar, MD
Robert Ali, MD
Candice Baldeo, MD
Martin Cerda, DO
Sana Chaudhry, MD
Melissa Dakkak, DO
Ena Gupta, MD
Abdulwahab Hritani, MD
Roshan Lala, MD
Nimeh Najjar, MD
Rahman Nakshabendi, MD
Wm. Taylor Palfrey Jr., MD
Joshua Samuel, MD
Daisy Torres-Miranda, MD

Professional Status

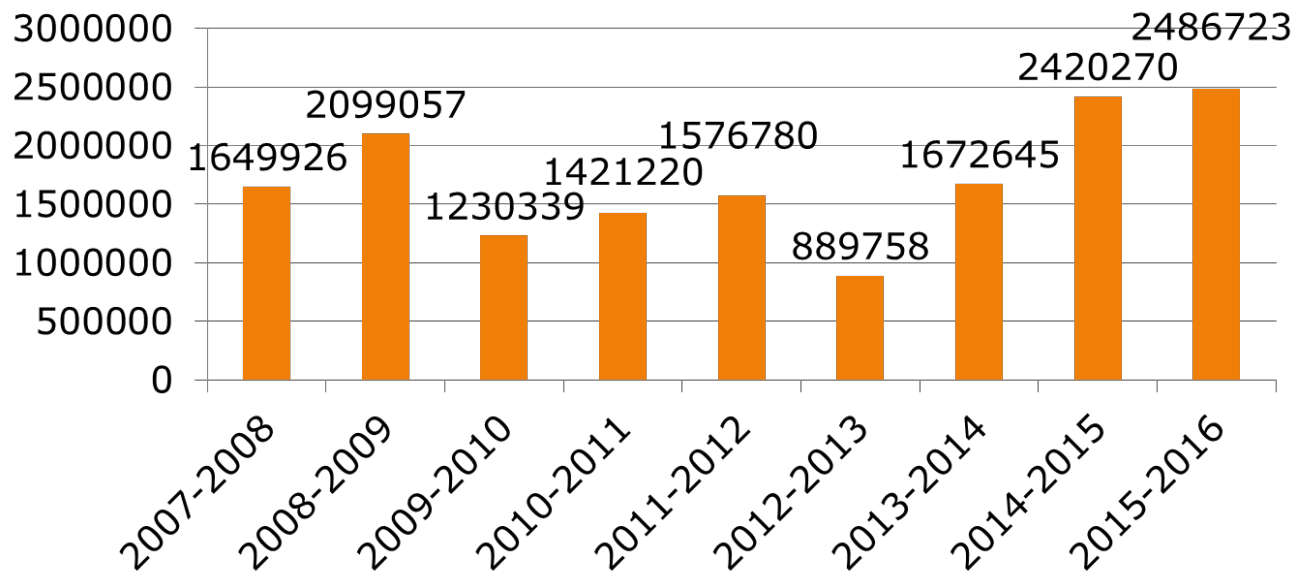
Cardiology Fellowship
Hematology Oncology Fellowship
Hematology Oncology Fellowship
Chief Medical Resident
Group Practice
Cardiology Fellowship
Pulmonary CC Fellowship
Cardiology Fellowship
Group Practice
Pulmonary CC Fellowship
Gastroenterology Fellowship
Chief Medical Resident
Pulmonary CC Fellowship
Infectious Disease Fellowship

Mayo Clinic, Arizona
Jackson Memorial Hospital, Miami
Mayo Clinic, Florida
University of Florida Jacksonville
Baptist Medical Ctr, Jacksonville
University of Arizona
Thomas Jefferson University
Aurora Health Care, Wisconsin
Baptist Medical Ctr, Jacksonville
University of Florida Jacksonville
University of Iowa
University of Florida Jacksonville
SUNY Stony Brook
George Washington University

DEPARTMENT RESEARCH
ACADEMIC YEAR 2016 (7/15 - 6/16)

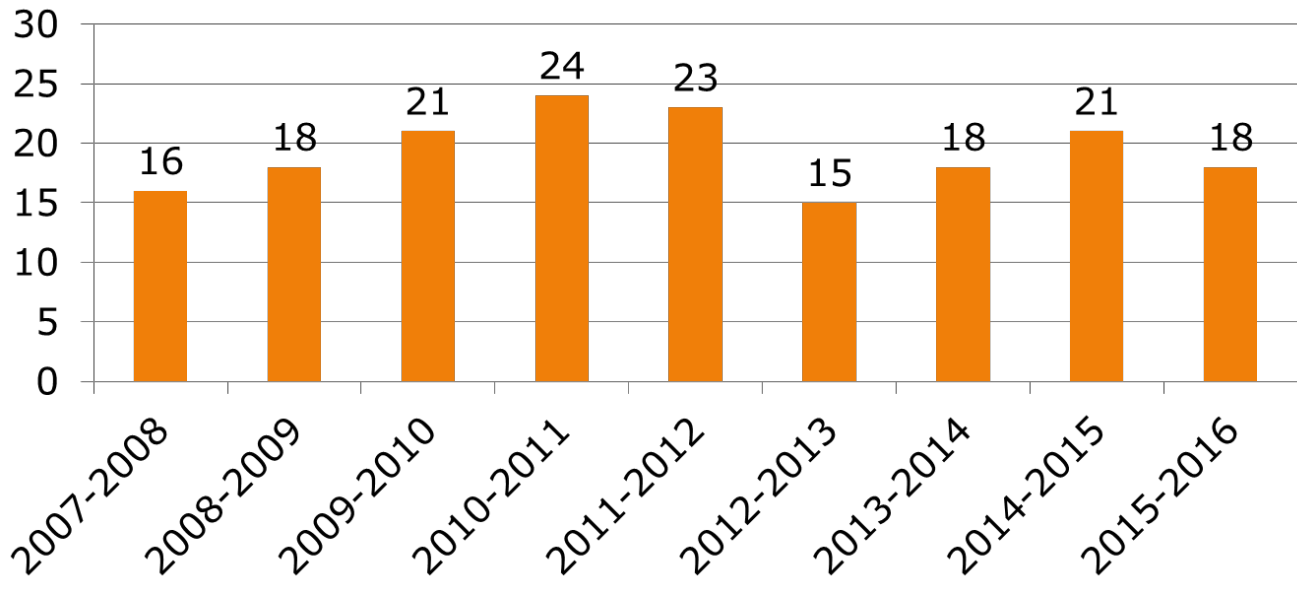
The faculty in the Department of Medicine continue to obtain research awards and train future investigators; an important aspect of the University of Florida College of Medicine-Jacksonville's mission. Trends in external funding for fiscal year 2015-2016 and eight prior years are shown in **Figure 1**.

Total Grant Revenue

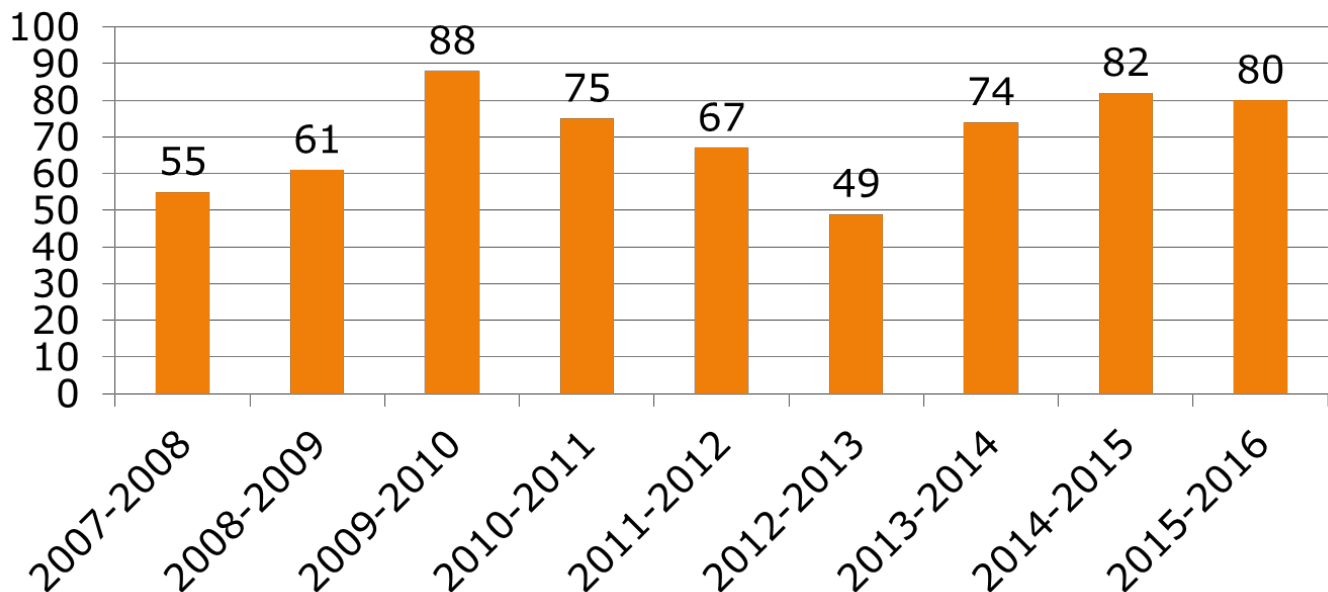


External funding from federal, state, industry and foundation sources increased 2.7% this fiscal year compared to last. There was a slight decrease in the number of funded investigators (from 21 investigators last fiscal year to 18 investigators this fiscal year) (**Figure 2**) as well as a slight decrease in the number funded projects (from 82 projects last fiscal year to 80 this fiscal year) (**Figure 3**).

Funded Investigators



Funded Projects



Several faculty members in the Department of Medicine have basic/translational science projects in the Medical Research Building. **Michael Haas, Ph.D.** (Endocrinology) is investigating molecular mechanisms that regulate expression of genes involved in cholesterol transport and oxidative and endoplasmic reticulum stress in endothelial cells. **Kent Wehmeier, M.D.** (Endocrinology) is investigating cholesterol metabolism and transport in osteocytes. **Charles Heilig, M.D.** (Nephrology and Hypertension) is examining the regulation of glucose transporter 1 expression by mechano-growth factor as well as examining the role of glucose transporters in liver cancer. **Leighton James, M.D.** (Nephrology and Hypertension) is examining the roles of various growth factors in diabetic kidney disease.

Residents and sub-specialty fellows in the Department of Medicine are assigned a mentor and participate in basic, translational, epidemiological, or clinical research. Two fellows in the Department of Medicine received Deans Fund Research Grants enabling them to carryout research projects under the mentorship of faculty. This has increased the scholarly output of our trainees.

At Research Day, 32% of the presentations were from residents and sub-specialty fellows in the Department of Medicine. **Dr. Lauren Stemboroski** placed third place in the oral platform competition. **Dr. Gabriel Faz** received the second place prize and **Dr. Monica Plazarte** received the fourth place prize for their poster presentations. These great outcomes are in part due to the desire and hard work of their faculty mentors. **Michael Haas, Ph.D.** has also worked with interns from the **Florida State College of Jacksonville Biotechnology** program.

DIVISION OF CARDIOLOGY
ACADEMIC YEAR 2016 (7/15 - 6/16)

Highlights

- Met budgetary targets on both UF side as well as UF Health side.
- Increased clinic volume and procedure volume in our North office.
- Great improvement in volume, as well as improvement in payer mix, for CT surgery program.
- CT surgery and electrophysiology team have partnered together to perform the new Conversion procedure.
- Closed our Lake City practice
- Had improved scores in both employee and patient satisfaction surveys.
- Worked closely with podiatry on a peripheral vascular relationship.
- Moved into new research building, expanded our cardiovascular research program.
- Continue to excel in patient satisfaction scores in our inpatient units.
- Put new contracts together for devices and stents which resulted in a large supply cost savings.
- Started a new performance improvement committee under the leadership of Dr. John Catanzaro.
- Recruited physicians for our EP fellowship program.

Cardiology Goals for 2016-17:

- Expand our program by adding mitral clip and watchmen procedures.
- Launch a \$600,000 marketing campaign regarding cardiovascular services, which will include cardiology and CT surgery.
- Continue to grow the CT surgery program, recruit for second CT surgeon. Continue growing minimally invasive program, robotics program, conversion program.
- Replace equipment in one of the cath Lab's.
- Continue to grow our Northside program in preparation for the North hospital opening. We will be acquiring the entire space in our North office in December. We plan on adding a nurse practitioner to increase our office visits and help with pre-and post-procedure work.
- Increase the number of procedures that are performed at North in the cath/EP lab.
- Put together a plan to add a vascular lab to cardiovascular services.
- Continue to work with vascular and podiatry on a limb salvage program.
- Continue to recruit for congestive heart failure cardiologist and start the process of rebuilding a CHF program.
- Recruit and hire a medical director for noninvasive lab. Add new equipment to the noninvasive lab, Philips systems, to focus on structural heart imaging. Develop new databases for tracking valve patients for TAVR program and mitral clip program.

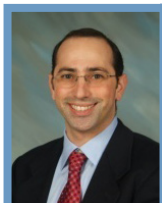
Education: The fellowship programs remain competitive. Our fellows and residents have received several research awards including Dean's grants and several presentations on Research Day. Our post doc research fellows have also received this recognition.

The following initiatives have taken place and are resulting in positive results:

- Monday Morning Report: mandatory meeting for ALL fellows to discuss important, challenging, complex cases that present to CCU over the weekend or preceding week.
- Goals and objectives for every clinical and nonclinical rotation
- Board Review/In training exam review sessions twice a month
- An advanced imaging rotation at Mayo
- Guest lecture faculty participating in our weekly didactic conference sessions
 - o Pulmonary series with Dr. Bajwa (UF – Jax)
 - o Advance imaging series with Dr. Shapiro (Mayo)
 - o Advance HF series with Dr. Parag Patel (Mayo)
- A fellows' case session at the Annual Women and Cardiovascular Disease Symposium

Research: Our faculty continues to excel in research, scholarly production and participation in national and international scientific sessions. We have approximately 50 ongoing studies, which range from basic/translational research to large scale clinical trials in various areas of cardiovascular disease. These include investigator initiated as well as sponsored studies. We have published approximately 40 peer-reviewed manuscripts, numerous abstracts and presentations at local, national and international meetings and several book chapters. We currently hold leadership positions in most major cardiovascular societies and editorial positions in many major cardiovascular journals. We continue to receive consistently increasing extramural funding. Our research staff has also expanded to meet the demands of our growing research operations following our recent relocation to a new cardiovascular research building which hosts a state-of the art thrombosis research laboratory, patient waiting area, clinical visit rooms, and offices for research staff.

LISTING OF FACULTY MEMBERS



Dominick Angiolillo, M.D. Ph.D., Professor

Medical School / Graduation date	The Catholic University of the Sacred Heart Medical School, Italy	1997
Internship/residency and year	The Catholic University of the Sacred Heart Medical School, Italy	1997
Subspecialty training and year	University Hospital of Salamanca, Spain/The Policlinico	1998
	Agostino Gemelli University Hospital, Italy/San Carlos	2003
	University Hospital	



Patrick Antoun, M.D., Assistant Professor

Medical School / Graduation date	American University of Beirut	2004
Internship/residency and year	American University of Beirut	2010
Subspecialty training and year	Loma Linda University - Cardiovascular Disease	2013
Subspecialty training and year	Indiana University – Interventional Cardiology	2014



Theodore Bass, M.D., Professor and Division Chief

Medical School / Graduation date	Brown University	1976
Internship/residency and year	Mayo Clinic	1979
Subspecialty training and year	Boston University	1981



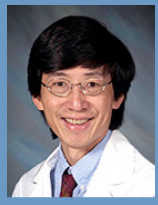
John Catanzaro, M.D., Assistant Professor

Medical School / Graduation date	State University of New York	2005
Internship/residency and year	North Shore University Hospital	2008
Subspecialty training and year	North Shore University Hospital	2011
Subspecialty training and year	The John Hopkins Hospital – Cardiac Electrophysiology	2013



Douglas Chapman, M.D., Associate Professor

Medical School / Graduation date	Chicago Medical School	1984
Internship/residency and year	University of Missouri	1987
Subspecialty training and year	Michael Reese Hospital	1990

**Steve Hsu, M.D., Associate Professor**

Medical School / Graduation date	Washington University	1990
Internship/residency and year	Thomas Jefferson University	1993
Subspecialty training and year	Thomas Jefferson University	1997

**Robert Kim, M.D., Assistant Professor**

Medical School / Graduation date	Tufts University School of Medicine – Boston, MA	1998
Internship/residency and year	St. Elizabeth's Medical Center – Boston, MA/ University of MA Medical Center-Worcester, MA	2001 2004
Subspecialty training and year	Dartmouth-Hitchcock Medical Center – Lebanon, NH	2008

**Alan Miller, M.D., Professor**

Medical School / Graduation date	University of Pittsburgh	1966
Internship/residency and year	Mount Sinai	1968
Internship/residency and year	George Washington University	1971
Subspecialty training and year	Cleveland Metropolitan Hospital	1973

**Leslie Oberst, M.D., Assistant Professor**

Medical School / Graduation date	University of Louisville School of Medicine	1994
Internship/residency and year	Rush University Medical Center	1995
Residency and year	Baylor College of Medicine – Cardiovascular MRI	2000
Subspecialty training and year	Baylor College of Medicine	2002

**Robert Percy, M.D., Associate Professor**

Medical School / Graduation date	University of Mississippi	1973
Internship/residency and year	University of Mississippi	1977
Subspecialty training and year	Joslin Clinic	1979
Subspecialty training and year	Mass General Hospital	1981

**Fabiana Rollini, M.D., Assistant Professor**

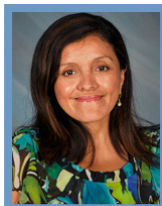
Medical School / Graduation date	University of Modena and Reggio Emilia, Modena, Italy	2007
Subspecialty training and year	School of Cardiology, University of Modena and Reggio Emilia, Modena, Italy	2010

**Daniel Soffer, M.D., Associate Professor**

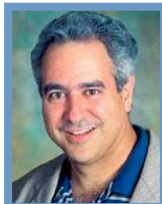
Medical School / Graduation date	Ben Gurion University, Israel	1993
Internship/residency and year	Lenox Hill Hospital	1997
Subspecialty training and year	Lenox Hill Hospital – Cardiovascular Disease	2000
Subspecialty training and year	William Beaumont Hospital – Interventional Cardiology	2002

**Siva Suryadevara, M.D., Assistant Professor**

Medical School / Graduation date	University of the West Indies	2006
Internship/residency and year	University of Florida College of Medicine-Jacksonville	2009
Subspecialty training and year	University of Florida College of Medicine-Jacksonville	2013

**Gladys Velarde, M.D., Associate Professor**

Medical School / Graduation date	New York University School of Medicine	1992
Internship/residency and year	Columbia Presbyterian Medical Center	1995
Subspecialty training and year	Boston University/Mount Sinai Hospital	1998

**Martin Zenni, M.D., Associate Professor**

Medical School / Graduation date	University of Chicago	1986
Internship/residency and year	Tufts University	1989
Subspecialty training and year	Harvard Medical School	1992

PUBLICATIONS

Peer-reviewed manuscripts:

Bhatt DL, Bonaca MP, Bansilal S, Angiolillo DJ, Cohen M, Storey RF, Im K, Murphy SA, Held P, Braunwald E, Sabatine MS, Steg PG. Reduction in Ischemic Events with Ticagrelor in Diabetic Patients: From the PEGASUS-TIMI 54 Trial. *J Am Coll Cardiol*. 2016 Mar 30. pii: S0735-1097(16)32408-1. doi: 10.1016/j.jacc.2016.03.529. [Epub ahead of print] PubMed PMID: 27046160.

Franchi F, Faz GT, Rollini F, Park Y, Cho JR, Thanos E, Hu J, Kureti M, Aggarwal N, Durairaj A, Been L, Zenni MM, Guzman LA, Suryadevara S, Antoun P, Bass TA, Angiolillo DJ. Pharmacodynamic Effects of Switching From Prasugrel to Ticagrelor: Results of the Prospective, Randomized SWAP-3 Study. *JACC Cardiovasc Interv*. 2016 Mar 18. pii: S1936-8798(16)30053-X. doi: 10.1016/j.jcin.2016.02.039. [Epub ahead of print] PubMed PMID: 27013060.

Rollini F, Franchi F, Hu J, Kureti M, Aggarwal N, Durairaj A, Park Y, Seawell M, Cox-Alomar P, Zenni MM, Guzman LA, Suryadevara S, Antoun P, Bass TA, Angiolillo DJ. Crushed Prasugrel Tablets in Patients With STEMI Undergoing Primary Percutaneous Coronary Intervention: The CRUSH Study. *J Am Coll Cardiol*. 2016 Mar 18. pii: S0735-1097(16)00913-X. doi: 10.1016/j.jacc.2016.02.045. [Epub ahead of print] PubMed PMID: 27012781.

Carreras ET, Hochholzer W, Frelinger AL 3rd, Nordio F, O'Donoghue ML, Wiviott SD, Angiolillo DJ, Michelson AD, Sabatine MS, Mega JL. Diabetes mellitus, CYP2C19 genotype, and response to escalating doses of clopidogrel. Insights from the ELEVATE-TIMI 56 Trial. *Thromb Haemost*. 2016 Mar 24;116(1). [Epub ahead of print] PubMed PMID: 27009617.

Park Y, Franchi F, Rollini F, Angiolillo DJ. Antithrombotic Therapy for Secondary Prevention in Patients With Diabetes Mellitus and Coronary Artery Disease. *Circ J*. 2016 Mar 25;80(4):791-801. doi: 10.1253/circj.CJ-16-0208. Epub 2016 Mar 16. PubMed PMID: 26984587.

Storey RF, Angiolillo DJ, Bonaca MP, Thomas MR, Judge HM, Rollini F, Franchi F, Ahsan AJ, Bhatt DL, Kuder JF, Steg PG, Cohen M, Muthusamy R, Braunwald E, Sabatine MS. Platelet Inhibition With Ticagrelor 60 mg Versus 90 mg Twice Daily in the PEGASUS-TIMI 54 Trial. *J Am Coll Cardiol*. 2016 Mar 15;67(10):1145-54. doi: 10.1016/j.jacc.2015.12.062. PubMed PMID: 26965534.

Capodanno D, Angiolillo DJ. Reviewing the controversy surrounding pre-treatment with P2Y₁₂ inhibitors in acute coronary syndrome patients. *Expert Rev Cardiovasc Ther*. 2016 Mar 29;1-10. [Epub ahead of print] PubMed PMID: 26953527.

Reed GW, Cannon CP, Waalen J, Teirstein PS, Tanguay JF, Berger PB, Angiolillo DJ, Price MJ. Influence of smoking on the antiplatelet effect of clopidogrel differs according to clopidogrel dose: Insights from the GRAVITAS trial. *Catheter Cardiovasc Interv*. 2016 Feb 23. doi: 10.1002/ccd.26428. [Epub ahead of print] PubMed PMID: 26909669.

Angiolillo DJ, Franchi F, Waksman R, Sweeny JM, Raveendran G, Teng R, Zhao Y, Carlson G, Khan N, Mehran R. Effects of Ticagrelor Versus Clopidogrel in Troponin-Negative Patients With Low-Risk ACS Undergoing Ad Hoc PCI. *J Am Coll Cardiol*. 2016 Feb 16;67(6):603-13. doi: 10.1016/j.jacc.2015.11.044. PubMed PMID: 26868683.

Velders MA, Abtan J, Angiolillo DJ, Ardissino D, Harrington RA, Hellkamp A, Himmelmann A, Husted S, Katus HA, Meier B, Schulte PJ, Storey RF, Wallentin L, Gabriel Steg P, James SK; PLATO Investigators. Safety and efficacy of ticagrelor and clopidogrel in primary percutaneous coronary intervention. *Heart*. 2016 Apr 15;102(8):617-25. doi: 10.1136/heartjnl-2015-308963. Epub 2016 Feb 4. PubMed PMID: 26848185.

Rollini F, Franchi F, Cho JR, DeGroat C, Bhatti M, Muniz-Lozano A, Singh K, Ferrante E, Wilson RE, Dunn EC, Zenni MM, Guzman LA, Bass TA, Angiolillo DJ. A head-to-head pharmacodynamic comparison of prasugrel vs. ticagrelor after switching from clopidogrel in patients with coronary artery disease: results of a prospective randomized study. *Eur Heart J*. 2016 Feb 3. pii: ehv744. [Epub ahead of print] PubMed PMID: 26848148.

Angiolillo DJ, Franchi F. Defining a Role for Prasugrel in Patients With Stable Coronary Artery Disease Undergoing Ad Hoc Percutaneous Coronary Intervention. *JACC Cardiovasc Interv*. 2016 Feb 8;9(3):228-30. doi: 10.1016/j.jcin.2015.11.022. Epub 2016 Jan 6. PubMed PMID: 26777325.

Capranzano P, Capodanno D, Bucciarelli-Ducci C, Gargiulo G, Tamburino C, Francaviglia B, Ohno Y, La Manna A, Antonella S, Attizzani GF, Angiolillo DJ, Tamburino C. Impact of residual platelet reactivity on reperfusion in patients with ST-segment elevation myocardial infarction undergoing primary percutaneous coronary intervention. *Eur Heart J Acute Cardiovasc Care*. 2016 Jan 12. pii: 2048872615624849. [Epub ahead of print] PubMed PMID: 26758542.

Franchi F, Rollini F, Park Y, Angiolillo DJ. A Safety Evaluation of Cangrelor in Patients Undergoing PCI. *Expert Opin Drug Saf*. 2016 Feb;15(2):275-85. doi: 10.1517/14740338.2016.1133585. Epub 2016 Jan 9. PubMed PMID: 26680584.

Franchi F, Rollini F, Cho JR, King R, Phoenix F, Bhatti M, DeGroat C, Tello-Montoliu A, Zenni MM, Guzman LA, Bass TA, Ajjan RA, Angiolillo DJ. Effects of dabigatran on the cellular and protein phase of coagulation in patients with coronary artery disease on dual antiplatelet therapy with aspirin and clopidogrel. Results from a prospective, randomised, double-blind, placebo-controlled study. *Thromb Haemost*. 2016 Feb 29;115(3):622-31. doi: 10.1160/TH15-06-0467. Epub 2015 Dec 3. PubMed PMID: 26633836.

Reny JL, Fontana P, Hochholzer W, Neumann FJ, Ten Berg J, Janssen PW, Geisler T, Gawaz M, Marcucci R, Gori AM, Cuisset T, Alessi MC, Berdagué P, Gurbel PA, Yong G, Angiolillo DJ, Aradi D, Beigel R, Campo G, Combescure C. Vascular risk levels affect the predictive value of platelet reactivity for the occurrence of MACE in patients on clopidogrel. Systematic review and meta-analysis of individual patient data. *Thromb Haemost*. 2016 Apr 1;115(4):844-55. doi: 10.1160/TH15-09-0742. Epub 2015 Nov 26. PubMed PMID: 26607655.

Clavijo LC, Maya J, Carlson G, Angiolillo DJ, Teng R, Caplan R, Price MJ. Platelet inhibition with ticagrelor versus clopidogrel in Hispanic patients with stable coronary artery disease with or without diabetes mellitus. *Cardiovasc Revasc Med*. 2015 Dec;16(8):450-4. doi: 10.1016/j.carrev.2015.08.007. Epub 2015 Aug 15. PubMed PMID: 26440227.

Franchi F, Rollini F, Park Y, Angiolillo DJ. Platelet thrombin receptor antagonism with vorapaxar: pharmacology and clinical trial development. *Future Cardiol*. 2015 Sep;11(5):547-64. doi: 10.2217/fca.15.50. Epub 2015 Sep 25. PubMed PMID: 26406386.

Franchi F, Rollini F, Cho JR, Bhatti M, DeGroat C, Ferrante E, Dunn EC, Nanavati A, Carraway E, Suryadevara S, Zenni MM, Guzman LA, Bass TA, Angiolillo DJ. Impact of Escalating Loading Dose Regimens of Ticagrelor in Patients With ST-Segment Elevation Myocardial Infarction Undergoing Primary Percutaneous Coronary Intervention: Results of a Prospective Randomized Pharmacokinetic and Pharmacodynamic Investigation. *JACC Cardiovasc Interv*. 2015 Sep;8(11):1457-67. doi: 10.1016/j.jcin.2015.02.030. PubMed PMID: 26404199.

Park Y, Franchi F, Rollini F, Angiolillo DJ. Update on oral antithrombotic therapy for secondary prevention following non-ST segment elevation myocardial infarction. *Trends Cardiovasc Med*. 2016 May;26(4):321-34. doi: 10.1016/j.tcm.2015.08.002. Epub 2015 Aug 11. Review. PubMed PMID: 26391344.

Pelliccia F, Rollini F, Marazzi G, Greco C, Gaudio C, Angiolillo DJ. Drug-drug interactions between clopidogrel and novel cardiovascular drugs. *Eur J Pharmacol*. 2015 Oct 15;765:332-6. doi: 10.1016/j.ejphar.2015.08.059. Epub 2015 Sep 2. Review. PubMed PMID: 26341013.

Tricoci P, D'Andrea DM, Gurbel PA, Yao Z, Cuchel M, Winston B, Schott R, Weiss R, Blazing MA, Cannon L, Bailey A, Angiolillo DJ, Gille A, Shear CL, Wright SD, Alexander JH. Infusion of Reconstituted High-Density Lipoprotein, CSL112, in Patients With Atherosclerosis: Safety and Pharmacokinetic Results From a Phase 2a Randomized Clinical Trial. *J Am Heart Assoc*. 2015 Aug 25;4(8):e002171. doi: 10.1161/JAHA.115.002171. PubMed PMID: 26307570; PubMed Central PMCID: PMC4599471.

- Rollini F, Franchi F, Angiolillo DJ. Switching P2Y12-receptor inhibitors in patients with coronary artery disease. *Nat Rev Cardiol.* 2016 Jan;13(1):11-27. doi: 10.1038/nrcardio.2015.113. Epub 2015 Aug 18. Review. PubMed PMID: 26283269.
- Current State and What Is Coming Down the Pike. *Prog Cardiovasc Dis.* 2015 Nov-Dec;58(3):267-77. doi: 10.1016/j.pcad.2015.08.009. Epub 2015 Aug 13. PubMed PMID: 26277706.
- Stolker JM, Lim MJ, Shavelle DM, Morris DL, Angiolillo DJ, Guzman LA, Kennedy KF, Weber E, Zareh M, Neumayr RH, Zenni MM. Pooled comparison of regadenoson versus adenosine for measuring fractional flow reserve and coronary flow in the catheterization laboratory. *Cardiovasc Revasc Med.* 2015 Jul-Aug;16(5):266-71. doi: 10.1016/j.carrev.2015.05.011. Epub 2015 Jun 5. PubMed PMID: 26242981.
- Capodanno D, Rossini R, Musumeci G, Lettieri C, Senni M, Valsecchi O, Angiolillo DJ, Lip GY. Predictive accuracy of CHA2DS2-VASc and HAS-BLED scores in patients without atrial fibrillation undergoing percutaneous coronary intervention and discharged on dual antiplatelet therapy. *Int J Cardiol.* 2015 Nov 15;199:319-25. doi: 10.1016/j.ijcard.2015.07.064. Epub 2015 Jul 26. PubMed PMID: 26241637.
- Capodanno D, Angiolillo DJ. Management of adjunctive antithrombotic therapy in STEMI patients treated with fibrinolysis undergoing rescue or delayed PCI. *Thromb Haemost.* 2015 Nov;114(5):945-57. doi: 10.1160/TH15-03-0204. Epub 2015 Jul 23. PubMed PMID: 26202745.
- Lupi A, Rognoni A, Cavallino C, Secco GG, Reale D, Cossa G, Rosso R, Bongo AS, Cortese B, Angiolillo DJ, Jaffe AS, Porto I. Intracoronary vs intravenous bivalirudin bolus in ST-elevation myocardial infarction patients treated with primary angioplasty. *Eur Heart J Acute Cardiovasc Care.* 2015 Jul 10. pii: 2048872615594499. [Epub ahead of print] PubMed PMID: 26163529.
- Waksman R, Maya J, Angiolillo DJ, Carlson GF, Teng R, Caplan RJ, Ferdinand KC. Ticagrelor Versus Clopidogrel in Black Patients With Stable Coronary Artery Disease: Prospective, Randomized, Open-Label, Multiple-Dose, Crossover Pilot Study. *Circ Cardiovasc Interv.* 2015 Jul;8(7):e002232. doi:10.1161/CIRCINTERVENTIONS.114.002232. PubMed PMID: 26152562.
- Cho JR, Rollini F, Franchi F, DeGroat C, Bhatti M, Dunn EC, Ferrante E, Muniz-Lozano A, Suryadevara S, Zenni MM, Guzman LA, Bass TA, Angiolillo DJ. Pharmacodynamic Effects of Ticagrelor Dosing Regimens in Patients on Maintenance Ticagrelor Therapy: Results From a Prospective, Randomized, Double-Blind Investigation. *JACC Cardiovasc Interv.* 2015 Jul;8(8):1075-83. doi:10.1016/j.jcin.2015.02.022. Epub 2015 Jun 24. PubMed PMID: 26117466.
- Angiolillo DJ, Bhatt DL, Steg PG, Stone GW, White HD, Gibson CM, Hamm CW, Price MJ, Prats J, Liu T, Mahaffey KW, Harrington RA. Impact of cangrelor overdosing on bleeding complications in patients undergoing percutaneous coronary intervention: insights from the CHAMPION trials. *J Thromb Thrombolysis.* 2015 Oct;40(3):317-22. doi: 10.1007/s11239-015-1233-3. PubMed PMID: 26024789.
- Capodanno D, Musumeci G, Lettieri C, Limbruno U, Senni M, Guagliumi G, Valsecchi O, Angiolillo DJ, Rossini R. Impact of bridging with perioperative low-molecular-weight heparin on cardiac and bleeding outcomes of stented patients undergoing non-cardiac surgery. *Thromb Haemost.* 2015 Aug;114(2):423-31. doi:10.1160/TH14-12-1057. Epub 2015 May 28. PubMed PMID: 26017898.
- Aradi D, Kirtane A, Bonello L, Gurbel PA, Tantry US, Huber K, Freynhofer MK, ten Berg J, Janssen P, Angiolillo DJ, Siller-Matula JM, Marcucci R, Patti G, Mangiacapra F, Valgimigli M, Morel O, Palmerini T, Price MJ, Cuisset T, Kastrati A, Stone GW, Sibbing D. Bleeding and stent thrombosis on P2Y12-inhibitors: collaborative analysis on the role of platelet reactivity for risk stratification after percutaneous coronary intervention. *Eur Heart J.* 2015 Jul 14;36(27):1762-71. doi: 10.1093/eurheartj/ehv104. Epub 2015 Apr 20. PubMed PMID: 25896078.
- Pelliccia F, Greco C, Gaudio C, Rosano G, Vitale C, Marazzi G, Rollini F, Angiolillo DJ. Comparison of the pharmacodynamic effects of ranolazine versus amlodipine on platelet reactivity in stable patients with coronary artery disease treated with dual antiplatelet therapy : The ROMAN (RanOlazine vs. aMlodipine on platelet reactivity in stable patients with CAD treated with dual Antiplatelet therapy) study. *J Thromb Thrombolysis.* 2015 Oct;40(3):331-9. doi:10.1007/s11239-015-1203-9. PubMed PMID: 25761430.
- Ueno M, Fujita K, Yamamoto H, Ikeda T, Suga T, Yamaji K, Ikuta S, Kobuke K, Iwanaga Y, Angiolillo DJ, Miyazaki S. Impact of impaired glucose tolerance on clopidogrel response in patients with coronary artery disease. *J Thromb Thrombolysis.* 2015 Aug;40(2):174-81. doi: 10.1007/s11239-015-1177-7. PubMed PMID:25633821.

Abstract presentations:

Storey R.F., Angiolillo D.J., Bonaca M.P., Thomas M.R., Bhatt D.L., Steg P.G., Ahsan A.J., Kuder J., Braunwald E., Sabatine M.S.. Ticagrelor 60 mg twice-daily provides effective platelet inhibition in patients with prior myocardial infarction: the PEGASUS-TIMI 54 platelet function substudy. *Eur Heart J* (2015) 36 (suppl 1).

Franchi F, Rollini F, Duarte V, Cho JR, Aggarwal N, Hu J, Kureti M, Durairaj A, Been L, Zenni M, Guzman LA, Bass TA, Angiolillo DJ. Pharmacodynamic comparison of prasugrel versus ticagrelor in patients with type 2 diabetes mellitus and coronary artery disease: the OPTIMUS (Optimizing antiplatelet therapy in diabetes mellitus)-4 study. ACC Scientific Session 2016. *J Am Coll Cardiol*. 2016;67(13_S):22.

Rollini F, Franchi F, Hu J, Kureti M, Aggarwal N, Durairaj A, Park Y, Seawell M, Cox-Alomar P, Zenni M, Guzman LA, Suryadevara S, Antoun P, Bass TA, Angiolillo DJ. Pharmacodynamic and pharmacokinetic profiles of prasugrel in patients with ST-segment elevation myocardial infarction undergoing primary percutaneous coronary intervention: a randomized comparison of standard versus crushed formulation – The CRUSH study. ACC Scientific Session 2016. *J Am Coll Cardiol*. 2016;67(13_S):1.

Rollini F, Franchi F, Thano E, Faz G, Park Y, Hu J, Kureti M, Aggarwal N, Durairaj A, Cho JR, Been L, Alobaidi Z, Zenni M, Bass TA, Angiolillo DJ. In vitro pharmacodynamic effects of cangrelor on platelet P2Y12 receptor mediated signaling in ticagrelor treated patients. ACC Scientific Session 2016. *J Am Coll Cardiol*. 2016;67(13_S):213.

Rollini F, Franchi F, Singh K, Cho JR, Bhatti M, DeGroat C, Hu J, Aggarwal N, Alobaidi Z, Thano E, Ferrante E, Zenni M, Bass TA, Angiolillo DJ. Impact of timing from blood sampling to pharmacodynamics assessment on measures of platelet reactivity in patients treated with P2Y12 receptor inhibitors. ACC Scientific Session 2016. *J Am Coll Cardiol*. 2016;67(13_S):214.

Faz G, Rollini F, Franchi F, Park Y, Cho JR, Thano E, Hu J, Kureti M, Aggarwal N, Durairaj A, Been L, Zenni MM, Guzman LA, Suryadevara S, Antoun P, Bass TA, Angiolillo DJ. Pharmacodynamic Effects of Switching From Prasugrel to Ticagrelor: Results of the Prospective, Randomized SWAP-3 (SWitching Anti Platelet)-3 study. ACC Scientific Session 2016. *J Am Coll Cardiol*. 2016;67(13_S):215.

Book chapters:

Francesco Franchi, Dominick J Angiolillo. Overview of Antiplatelet Therapy for Myocardial Infarction. In Morrow AL (ed): *Myocardial Infarction: A Companion to Braunwald's Heart Disease*. Elsevier, 2016 (in press).

Dominick J Angiolillo, Gregory R. Giugliano, Daniel I. Simon, and Roxana Mehran. Antiplatelet and Anticoagulant Therapy in Acute Coronary Syndromes. In Fuster, Walsh, Harrington (ed): *Hurst's The Heart*, McGraw Hill, 2016 (in press)

CLINICAL ACTIVITIES

Outpatient Activity	AY 15/16
Physician clinic visits	14884
Cardiac ultrasounds	10,299
Cardiac nuclear studies	1414
EKGs	59,869
Stress tests	2,208
Heart caths	2,590
EP procedures	1,792
Cardiac rehab visits	2,124
TAVR	26
*Attending Only: Jacksonville Clinic=8389, Emerson=1099, St Marys =2475, Northside = 2921	

CONTRACTS AND GRANTS

Principal Investigator	Study Title	Project Period	Sponsor	Award Amount
Angiolillo, D	Eval of Switching from Prasugrel to Ticagrelor	2014-2016	IIS Grant	\$396,125.00
Angiolillo, D	Effect of the periph opioid recept antagonist methylnaltrexone on the pharmacokinetic and pharmacodynamics profiles	2015-2016	Astra Zeneca	\$326,462
Angiolillo, D	Impact of chronic kidney disease on the pharmacodynamics and pharmacokinetic effects of ticagrelor in patients/diabetes	2016-2017	Astra Zeneca	\$402,544
Angiolillo, D	Adjunctive Vorapaxar Therapy in patients with prior myocardial infarction treated with P2Y12 receptor prasugrel	2016-2018	Merck	\$415,716
Angiolillo, D	Pharmacodynamic Effects of Vorapaxar as an Add on antiplatelet therapy in post myocardial infarction patients	2016-2018	Merck	\$231,424
Angiolillo, D	Effects of EDOXaban on the cellular and protein phase of coagulation in patients with coronary artery disease on dual AntiPlatelet Therapy with aspirin and clopidogrel	2016-2018	Daiichi Sankyo	\$296,530

DIVISION OF ENDOCRINOLOGY, DIABETES AND METABOLISM
ACADEMIC YEAR 2016 (7/15 - 6/16)

Highlights

The Division of Endocrinology, Diabetes and Metabolism had a year of sustained change and development in all areas of the academic mission of the University of Florida. Clinically, major events included expansion of clinical services geographically and provision to a broader audience. The endocrinology faculty initiated in-vitro and clinical investigations into hormonal action with acquisitions of new faculty and personnel. Academically, the division submitted multiple manuscripts, delivered multiple scholarly presentations and contributed to the university's educational mission.

Patient care: The division provided inpatient and outpatient consultation at the University of Florida College of Medicine-Jacksonville campus and Emerson Medical Plaza to faculty of the university and referring physicians in the northeast Florida/southern Georgia region and beyond. With the opening of the UF North campus, endocrinology services extended to a broader area of the First Coast. The core clinical faculty of the division included Dr. Joe Chehade, Dr. Gunjan Gandhi, Dr. Arshag Mooradian, and Dr. Kent Wehmeier. The division addressed clinical endocrinology problems related to hypothalamus, pituitary, thyroid, pancreas, adrenal and sex hormone gland dysfunction as well as gender identity. Patients with metabolic disorders including diabetes mellitus, metabolic syndrome, obesity, anorexia, hypercholesterolemia, calcium and metabolic bone diseases such as osteoporosis and vitamin D deficiency were evaluated and treated. The division's main clinical operations occurred at UF Endocrinology and Diabetes at Emerson Medical Plaza. The number and variety of consultations continued to rise. Patients were also evaluated at the UF Health-Jacksonville Ambulatory Care Center (ACC). Dr. Chehade, Dr. Gandhi and Dr. Wehmeier performed analyses of the glucose monitoring data, obtained by continuous glucose monitoring to make recommendations regarding diabetes management. Diabetes care has matured with the partnering of outpatient diabetes education with the Division of Endocrinology. Meredith Smith, MS, RD, LD, provides onsite education at the UF Emerson location for diabetes management, carbohydrate counting and medical nutrition therapy (MNT.) Dr. Chehade utilized ultrasound guidance for the evaluation of patients with thyroid nodules, and thyroid cancer to provide comprehensive care to patients with thyroid disease.

A unique collaboration with the UF College of Medicine-Jacksonville's Department of Surgery, Radiology and Pathology has enhanced the care of patients with thyroid and parathyroid disease. Through the discussion and implementation of diagnostic and treatment protocols, the care of these patients has been standardized to better evaluate outcomes and focus on patients with more challenging management issues. A second collaboration continued with the Departments of Neurosurgery, Otolaryngology, Pathology, Radiation Oncology, and Radiology. Both collaborations were coordinated through Dr. Wehmeier.

On the inpatient service, more patients were served by endocrinology consultation. The division also presented evaluation and management techniques in the areas of diabetes, thyroid disease and osteoporosis to UF Family Practice clinics to facilitate optimal care of patients with these conditions.

Leading the charge for better inpatient diabetes care, the division participated in the Diabetes Steering Committee. This multidisciplinary body comes together to discuss common issues in glucose control. Strategies to improve outcomes are discussed and implemented.

Education: The Endocrinology fellowship continues to maintain its ACGME accreditation, under the direction of Program Director, Dr. Kent Wehmeier and newly appointed Associate Program Director, Dr. Gunjan Gandhi. Fellows Dr. Ayham Chamseddin and Dr. Monica Plazarte joined the Division in July 2014 and completed their fellowships. Dr. Ramadan Hammoud and Dr. Marilu Jurado began July 1, 2015 and

have been exceptional and productive additions to the division. All four fellows have made substantive contributions to the clinical care, education and research mission of the division. In resident physician education, Dr. Wehmeier continued as rotation director of relevant educational programs for Endocrinology. He is the primary liaison between the Core Residency Program and the Division, and is a member of the Resident Education Committee. The faculty members and fellows participate in teaching rounds in the clinic and in conferences to enhance the experience of the rotating residents.

In the educational program of University of Florida, Dr. Chehade, Dr. Gandhi and Dr. Wehmeier are in preceptor clinics in Endocrinology and coordinate lectures for the University of Florida medical students and residents in medicine and emergency medicine. The division's Endocrinology Grand Rounds provide an avenue for speakers at UF Jacksonville and Gainesville to share knowledge and enhance collaboration between various disciplines at UF.

Research: Strides have been made in making clinical research more attractive to industry and to potential subjects. Under the guidance of division members, the awards and numbers of subjects have continued to grow. Additional research staff has been added to grow the division's efforts. The basic science research lab, under the direction of Dr. Michael Haas, continues to be a place of learning and scholarly activity. Investigations regarding the effects of multiple hormones on the expression of the most important protein in the high density lipoprotein (HDL) particle, Apo AI, and the involvement of endoplasmic reticulum (ER) stress and oxidative stress in coronary artery disease continue to reveal critical insights. The division had a strong showing at the University of Florida College of Medicine-Jacksonville Research Day. All four fellows had poster presentations displaying their research at national meetings, including the American Association of Clinical Endocrinology and the Endocrine Society. Four investigator-initiated clinical trials are also in the process of studying topics in thyroid disease and macronutrient metabolism.

Philanthropy: The Division members have been the recipients of many gifts. In the spirit of giving back, the members have contributed of their time, effort and resources to the underserved and to children in Jacksonville, as well as overseas.

LISTING OF FACULTY MEMBERS



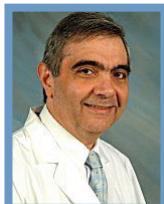
Joe Chehade, M.D., Professor

Medical School / Graduation date	St. Joseph University School of Medicine, Beirut-Lebanon	1992
Internship/residency and year	Staten Island University Hospital	1997
Subspecialty training and year	Saint Louis University School of Medicine	1997



Michael Haas, Ph.D., Research Associate Professor

Graduate School/Graduation date	University of Nebraska Medical Center	1991
Post-Graduate Training and year	McArdle Laboratory for Cancer Research	1994



Arshag D. Mooradian, M.D., Professor and Chairman, Department of Medicine

Medical School / Graduation date	American University of Beirut	1980
Internship/residency and year	American University of Beirut	1982
Subspecialty training and year	University of Minnesota	1985

**Kent Wehmeier, M.D., Associate Professor and Division Chief**

Medical School / Graduation date	University of Missouri-Columbia	1988
Internship/residency and year	Barnes-Jewish Hospital, Washington University	1991
Subspecialty training and year	Saint Louis University School of Medicine	1993

PUBLICATIONS**Publications:**

Haas MJ, Gragnoli C. Proteasome modulator 9 risk gene for T2D and depression is linked to insomnia. *Scientific Reports* 5:12032, 2015.

Mooradian AD, Onstead-Haas L. **Haas MJ**. Asymmetrical cross-talk between the endoplasmic reticulum stress and oxidative stress caused by dextrose. *Life Sciences* 144:37-48, 2016.

Wehmeier KR, Kurban W, Chandrasekharan C, Onstead-Haas L, **Mooradian AD**, and **Haas MJ**. Inhibition of ABCA1 protein expression and cholesterol efflux by TNF in MLO-Y4 osteocytes. *Calcified Tissue International*, 98:586-95, 2016.

Mooradian AD, **Haas MJ**. Targeting high-density lipoproteins: increasing de novo production versus decreasing clearance. *Drugs*, 75:713-722, 2015.

Mooradian AD. Drug therapy of diabetic dyslipidemia: Do the statins suffice? *Am. J. Therap.* 22:87-88, 2015.

Mooradian A, **Cehade JM**, **Mooradian AD**. The advantages and pitfalls of anti-hyperglycemic combination pills as first-line therapy in the management of type 2 diabetes. *Am J Therap.* (Epub ahead of print) Dec 2015.

Alexandraki I, Palacio C, **Mooradian AD**. The relative merits of low carbohydrate diets in managing obesity: a meta-analysis of low carbohydrate versus low fat diets. *Southern Medical Journal* 108:401-416, 2015.

Makhoul Ahwach S, Thomas M, Onstead-Haas L, **Mooradian AD**, **Haas MJ**. The glutathione mimic ebselen inhibits oxidative stress but not endoplasmic reticulum stress in endothelial cells. *Life Sciences* 134:9-15, 2015.

Abstracts/Presentations:

Jurado-Flores, M, Onstead-Haas, L, **Mooradian, AD**, **Haas, MJ**. Differential effects of AT1 Receptor Inhibition on Superoxide Generation and Endoplasmic Reticulum Stress in Human Coronary Artery Endothelial Cells. Poster presentation at: ENDO 2016, Boston, MA, 2016.

Plazarte, M, Chamseddin, A, Onstead-Haas, L, **Mooradian, AD**, **Haas, MJ**. High-Throughput Analysis to Identify Drugs That Alter Apolipoprotein A-I Production. Poster presentation at: ENDO 2016, Boston, MA, 2016.

Plazarte M, Chamseddin A, **Cehade JM**. Effects of Using Continuous Glucose Monitoring for the Prevention of Hypoglycemia in Older Adults. AACE 2016 Annual Meeting, Orlando, FL. May 2016.

CLINICAL ACTIVITIES

	AY 15/16
Inpatient Activity	
Initial Inpatient Encounters	406
Outpatient Activity	
Clinic Visits	7250
Thyroid Biopsies	130

GRANTS AND CONTRACTS

Principal Investigator	Study Title	Project Period	Sponsor
Wehmeier, K.	A Phase III, multicentre, international, randomized, parallel group, double blind cardiovascular safety study of BI 10773 (10 mg and 25 mg administered orally once daily) compared to usual care in type 2 diabetes mellitus patients with increased cardiovascular risk	04/11-04/17	Boehringer-Ingelheim
Chegade, J.	A trial comparing cardiovascular safety of insulin degludec versus insulin glargine.	11/13-12/20	Novo-Nordisk
	Efficacy and safety of semaglutide once-weekly versus exenatide ER 2.0 mg once-weekly as add-on to 1-2 oral antidiabetic drugs (OADs) in subjects with type 2 diabetes.	11/13-11/16	Novo -Nordisk
	A 24-Week Metformin Extended Release Compared to Metformin Immediate Release Monotherapy in Adult Subjects with Type 2 Diabetes.	08/13-03/16	Bristol-Myers Squibb
	Safety and Efficacy of Triple Therapy with Saxagliptin added to Dapagliflozin in Combination with Metformin compared to Therapy with Placebo added to Dapagliflozin in combination with Metformin.	08/12-10/15	Bristol-Myers Squibb

DIVISION OF GASTROENTEROLOGY
ACADEMIC YEAR 2016 (7/15 – 6/16)

Highlights

We acknowledge our entire GI team. Dr. Silvio de Melo, Dr. Amie Deutch, Dr. Emely Eid, Dr. Miguel Malespin and Dr. James Scolapio. A special thank you to our mid-level providers Pat Nasrallah, Kellie Leis, Rhonda Broughton and Christina Lee. We give special acknowledgments to our Emerson staff, Kimmie Holcomb and Nicole Stemp. Without our total team effort, our division would not have been as successful as it has become over the past years. We also welcome Dr. Miguel Malespin who joined our faculty July 13, 2015. In just a short time, Dr. Malespin has developed an organized hepatology practice with an emphasis on hepatitis C treatment.

Patient Care: The patient care aspect of our academic mission is pursued at the following locations: UF Health North with general GI clinics and endoscopy; general GI, IBD and hepatology clinics at both the Emerson campus and the Towers clinic; general GI clinic and endoscopy at UF Health Multispecialty Clinic; endoscopy with advanced procedures at the UF Health Hospital; inpatient consult service at the UF Health Hospital. Our mission is to have timely patient access and to provide excellent quality of patient care with specific attention focused on reduced patient wait times and improvement of patient no-show rates. With the help of our office manager, Kimmie Holcomb, we have significantly improved the GI depot and waiting times for GI procedures. Our joint efforts with the hospital staff has significantly improved patient access. With this new system of operations, our endoscopy practice is running more efficiently than previous years. The GI division leads the way with new patient access and the number of surgical procedures at the North Campus. This success is the result of managing our template ratios and including the physician assistant model for screening colonoscopies and follow-up patient care. The synergy and communication between our Emerson and North staff has been instrumental in this success.

Education: Dr. de Melo has done an excellent job with our training program. Our most recent ACGME survey shows significant improvement: Overall scores 50 % in 2015 to 83% in 2016 and faculty evaluations 3.7 in 2015 to 4.2 in 2016. Our priority remains recruiting GI fellows with a proven track record of clinical research and specific attention will continue to focus on the core competency of professionalism. Dr. de Melo has also reenergized the Jacksonville Gut Club. This is an educational venue that is very important for our division's presence in the community. This academic year our faculty have worked as a team to write a vision statement for our division. This well thought out plan is how we choose to manage and lead our GI division moving forward. We have also started a faculty development series with a written curriculum (*Jon Gordon, The Energy Bus*) to help all of us improve as working colleagues and academic clinicians.

Research: All faculty members have been productive in scholarly activities over the past academic year. Key articles include *Simulation Learning* by Dr. de Melo and the use of *GLP-2 for short bowel syndrome* by Dr. Scolapio and Dr. Matt Clark. The GI faculty have given multiple presentations at local, regional and national meetings. Dr. Malespin has built an excellent research team with the pharmacy department for the treatment and research of hepatitis C patients. Dr. Malespin has extramural funding for 3 research protocols and is working closely with our new department research coordinator, Kelly Jackman.

LISTING OF FACULTY MEMBERS

**Robert Bass, M.D., Assistant Professor**

Medical School / Graduation date	Medical College of Georgia	1988
Internship/residency and year	University of South Alabama	1991
Subspecialty training and year	University of Florida – Jacksonville	1993

**Silvio de Melo, M.D., Assistant Professor**

Medical School / Graduation date	Faculdade de Medicina da Universidade , Recife, Brazil	2001
Internship/residency and year	UT-Southwestern Medical Center, Dallas, TX	2006
Subspecialty training and year	UT-Southwestern Medical Center, Dallas, TX	2009
Subspecialty training and year	Mayo Clinic, Jacksonville, FL – Advanced Endoscopy	2010

**Amie Deutch, M.D., Assistant Professor**

Medical School / Graduation date	Loyola University Chicago, Maywood, IL	1998
Internship/residency and year	St. Elizabeth's Med Center, Boston, MA	2001
Subspecialty training and year	University of Massachusetts	2004

**Emely Eid M.D., Assistant Professor**

Medical School / Graduation date	American University of Beirut, Beirut, Lebanon	2004
Internship/residency and year	Indiana University , Indianapolis, IN	2009
Subspecialty training and year	UT-Southwestern Medical Center, Dallas, TX	2012

**Miguel Malespin, M.D., Assistant Professor**

Medical School / Graduation date	Ponce School of Medicine	2008
Internship/residency and year	University of Illinois	2011
Subspecialty training and year	University of Illinois – Gastroenterology	2014
	Loyola University Medical Center – Transplant Hepatology	2015

**James Scolapio, M.D., Professor and Division Chief**

Medical School / Graduation date	Marshall University School of Medicine	1991
Internship/residency and year	Mayo Graduate School of Medicine – Jacksonville	1994
Subspecialty training and year	Mayo Graduate School of Medicine – Rochester, MN	1997

**Paul Sievert, M.D., Assistant Professor**

Medical School / Graduation date	University of Miami	1996
Internship/residency and year	Medical College of Virginia	1999
Subspecialty training and year	University of Florida – Jacksonville	2003

PUBLICATIONS

Geffen J, Kaitlin A, **Eid E**. A case report on an unusually located colonic mass. Gastro Journal. 2016 Apr (Accepted epub)

Brown R II, Samuel J, Parmar K, Shuja S, **de Melo SW**. Sodium polystyrene sulfate-induced esophageal ulcer. Gastrointest Endosc 2016 Mar; 83(3):664-5. doi: 10.1016/j.gie.2015.09.022. PMID: 26422977

Sievert P, Shuja A, Tam I, Kim EM, Kang S, Kapulsky L, Viveiros K, Lee H. Gastroenterologists have suboptimal hepatitis B virus screening rates in patients receiving immunosuppressive therapy. Dig Dis Sci. 2016 Mar.

Lee A, Kraemer D, Smotherman C, **Eid E**. Providing fellows-in-training education on inflammatory bowel disease health maintenance to improve the quality of care in our healthcare system. Inflamm Bowel Dis. 2016 Jan (1):187-93. doi: 10.1097/MIB.0000000000000573. PMID: 26332311

Duarte-Rojo A, Fischer SE, Adeyi O, Zita D, Deneke MG, Selzner N, Chen L, **Malespin M**, Cotler SJ, McGilvray ID, Feld, JJ. [Protease inhibitors partially overcome the interferon nonresponse phenotype in patients with chronic hepatitis C](#). J Viral Hepat. 2015 Dec. doi: 10.1111/jvh.12494 PMID: 26710754

Scolapio JS, et al. Nutrition support in gastrointestinal disease. World Rev Nutr Diet. 2015;111:141-5. doi: 10.1159/000362312. PMID: 25418404

Kanar O, Nakshabendi R, Berry AC, Issa R, Tarbunova M, Clark M, **Deutch A**. Colonic mucosal schwann cell hamartoma incidentally found on screening colonoscopy. Am J Gastroenterol 2015 Oct. 110: S157-S158. doi:10.1038.270. PMID: 26697564

Presentations:

Scolapio J. Short Bowel Syndrome. Medical Grand Rounds: West Virginia University, Beckley, WV. Apr 2016

Scolapio J. Nutritional Illness. UF College of Medicine - Jacksonville. Apr 2016

Sievert P. GI malignancies; esophagus, stomach, gallbladder, pancreas. UF College of Medicine-Jacksonville. Mar 2016

Eid E. MGR – Helicobacter pylori – When to test? When to treat? UF College of Medicine - Jacksonville. Mar 2016

Scolapio J. Treatment of short bowel syndrome. Medical Grand Rounds. Deland, FL Feb 2016

Malespin M. Hepatitis. Oral presentation at: Internal Medicine Grand Rounds. UF College of Medicine-Jacksonville. Feb 2016

de Melo SW. Bowel preparation for colonoscopy: State of the art. Oral presentation at: Society for Gastroenterology Nurses and Associates (SGNA). Jan 2016

de Melo SW. Introduction to Endoscopic Ultrasound (EUS). Oral presentation at: Medicine Grand Rounds. UF College of Medicine - Jacksonville. Jan 2016

Scolapio J. The use of tropic factors in short bowel syndrome. Oral presentation at: American Society of Parenteral and Enteral Nutrition. Houston, Texas. Jan 2016

de Melo SW. GI Bleeding. UF College of Medicine-Jacksonville. Nov 2015

Blum-Guzman JP. **de Melo SW**. Location of Colorectal Cancer: Colonoscopy vs. Surgery: Yield of Colonoscopy in Predicting Actual Location. Poster presentation at American College of Gastroenterology (ACG) Annual Scientific Meeting. Honolulu, HI. Oct 2015

Sievert P. Mesenteric Ischemia. Oral presentation at: Internal UF College of Medicine - Jacksonville. Oct 2015

Bass R. Irritable Bowel Syndrome. UF College of Medicine - Jacksonville. Sept 2015

Scolapio J. Short Bowel Syndrome. UF College of Medicine - Jacksonville. Aug 2015

Malespin M. Evaluation and Management of the Patient with Cirrhosis. Medicine Grand Rounds. UF College of Medicine-Jacksonville. Jul 2015

Bass R. Diarrhea. UF College of Medicine-Jacksonville. Jul 2015

Malespin M. Evaluation and management of the cirrhotic patient. Oral presentation at: Medicine Grand Rounds. UF College of Medicine-Jacksonville. Jul 2015

Book Chapters and Monographs:

Scolapio JS: Nutrition for the Primary Care Provider. Editor: Bier D (eds). World Rev Nutr Diet. Basel, Karger, 2015; 111:141-145.

Scolapio JS, Clark M. Short Bowel Syndrome: Practical Approach to Management. Glucagon-Like Peptide (GLP). Editors: DiBaise. J, Parrish C, Thompson J. Chapter 19. June 2016.

Malespin M, Hecht G, Gaspar JP. Approach to the patient with diarrhea. In: Yamada's Textbook of Gastroenterology, Sixth Edition. Wiley-Blackwell. ISBN: 978-1-118-51206-7 Dec 2015

Malespin M, Tsang RW. What Do Abnormal Liver Tests Mean? In: Liver Disorders: A Point-of-Care Clinical Guide. Springer International Publishing (In press).

CLINICAL ACTIVITIES

Inpatient Activity	AY 15/16
Number of Inpatient Consults	1381
UF Health Jacksonville Inpatient Procedures	946
Baptist Beaches Inpatient Procedures	90
Outpatient Activity	
Clinic Visits	13208
UF Health Jacksonville Outpatient Procedures	7856
Baptist Beaches Outpatient Procedures	1019
Jax Beach Surgery Center Outpatient Procedures	632
Jacksonville Surgery Center	1364

DIVISION OF GENERAL INTERNAL MEDICINE
ACADEMIC YEAR 2016 (7/15 - 6/16)

Highlights

The division continues a robust inpatient and outpatient practice and is an integral part of the educational experience for the Internal Medicine residency.

Patient Care: The Division of General Internal Medicine is comprised of 15 members, including the two chief medical residents. All full time faculty are certified by the American Board of Internal Medicine. The clinical care provided by members of the division include the provision of inpatient care as the attendings for the four inpatient teaching services, outpatient care at two locations: the Ambulatory Care Center at UF Health Jacksonville and the UF Internal Medicine Clinic at Emerson, an inpatient Internal Medicine consultation service and medical evaluation of patients admitted to the inpatient Psychiatry service. The division has a busy outpatient practice and based on patient satisfaction, the physicians in the group are considered excellent clinicians. In addition to the excellent physicians in the group, the outpatient primary care practices recently received notification that they had been granted NCQA Level 3 certification as a Patient Centered Medical Home. *JaxHATS* (Jacksonville Health and Transition Services) clinics held on Monday afternoons and Tuesday and Thursday mornings continue to serve as a model primary care home for emerging adults with chronic illness and special healthcare needs. Dr. Linda Edwards, in conjunction with Dr. David Wood, a general pediatrician, established this clinic for adolescents and young adults who are transitioning from their pediatricians to adult providers in 2005. The *PAIDD* (Program for Adults with Intellectual and Developmental Disability) clinic continues to grow and provide primary care services and care coordination to this adult special needs population. The clinic and care coordination of these patients is supported by a grant from the Riverside Foundation. Our geriatrician, Dr. Hsiao-Yen Kuo, has developed a growing geriatric outpatient practice, seeing patients at our Emerson site and continues to provide care to patients admitted to one of our local nursing homes.

Education: The division provides faculty supervision of residents on the four general internal medicine inpatient teaching services, the inpatient medicine consultation service and geriatrics, as well as faculty supervision and mentoring of all categorical medicine residents in their outpatient continuity practice and urgent care clinics.

Dr. Jeff House serves as Program Director for the Internal Medicine Residency Program and Dr. Palacio is one of the Associate Program Directors for the training program. He is focusing his efforts in the ambulatory care arena and quality improvement initiatives with the residents in their outpatient practice. Dr. Landa serves as the Clerkship Director for medical students from Gainesville who rotate on the Internal Medicine service (inpatient and outpatient). Drs. Landa, Reddy and Palacio served as core faculty for the residency training program in Internal Medicine and are members of the Clinical Competency Committee (previously the Resident Education Committee).

Drs. Masri and Sottile serve as peer reviewers for the University of Florida College of Medicine-Jacksonville faculty development program. Dr. Sottile also serves as a facilitator and is the co-developer of the "Teaching Residents to Teach"-a 6-8 hour intradepartmental seminar offered each year at the University of Florida College of Medicine-Jacksonville to residents and subspecialty residents.

All members of the division participate in morning report and have presented at the noon conference core curriculum series held daily, as well as the Friday afternoon Board review.

The division serves as an integral part of the education program for 3rd and 4th year medical students from the University of Florida. Members of the division serve as preceptors for students in both the inpatient setting as well as in our outpatient practice. Student evaluations of their experience are

excellent and are reflected in the number of exemplary teacher awards given to faculty within the division.

Quality: Dr. Jeff House coordinates monthly M&M/QA and QI for the training program. He also serves as the Quality Officer for the Department of Medicine. He is the Chair of the Medical Performance Improvement Committee (MPIC) and is a member of the Performance Improvement Committee—the institutional body that oversees quality and safety for the UF Health Jacksonville campus. The Division of GIM strives to meet HEDIS measures and meaningful use criteria. The division is working with the hospital quality team to review and assess our readmission rates, timeliness of discharges and through put, as well as identify opportunities to continue to improve our patient satisfaction. In the outpatient setting, Dr. Palacio coordinates a number of quality improvement projects with the residents to look at access, show rates and whether preventive care and screening guidelines are being met.

Research: Research in the division varies among the faculty. Many of the faculty have mentored residents in their research projects and have assisted them in submitting and being awarded grants from the Dean's Fund for Research. The division continues to be productive as demonstrated by the publications list below.

Future Directions: Development of registries through EPIC will assist the division in meeting the needs of our patients and allow us to provide better care to them. To meet the primary care needs of Jacksonville, we will be expanding our practice to the north side. We also plan to expand the nursing home network of our division to provide additional training opportunities for our residents and students, as well as facilitate the care of our patients. The clinic for adults with intellectual and developmental disabilities continues to grow and provides a unique service to this special needs population.

The division will have the opportunity to develop performance improvement initiatives that will lead to improved patient care and safety and result in the preparation of scholarly works. Faculty and resident involvement in these initiatives will be critical.

LISTING OF FACULTY MEMBERS



Silvia Abreu Read M.D., Assistant Professor

Medical School / Graduation date
Internship/residency and year

Universidad Nacional Pedro Henriquez Urena
Pitt County Memorial Hospital

1999
2003



Win Aung, M.D. Assistant Professor

Medical School / Graduation date
Internship/residency and year

Institute of Medicine, Myanmar
Lutheran Medical Center

1990
2008



Lori A. Bilello, Ph.D., M.B.A., M.H.S., Assistant Professor, Associate Director, CHEQR

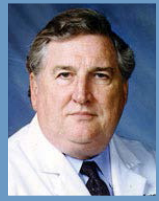
PhD Health Services Research
Master of Business Administration

University of Florida
University of Florida

2012
1998

**Linda Edwards, M.D., Associate Professor, Associate Chair and Division Chief**

Medical School / Graduation date	East Carolina University	1981
Internship/residency and year	Jacksonville Health Education Programs	1985

**Malcolm Foster, M.D., Adjunct Professor**

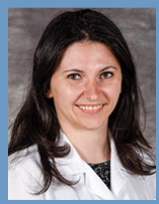
Medical School / Graduation date	Bowman Gray School of Medicine	1963
Internship/residency and year	University of Florida, Gainesville	1966
Subspecialty training and year	University of Florida, Gainesville (Infectious Disease)	1967

**Alan Halperin, M.D., Professor**

Medical School / Graduation date	University of Kansas	1971
Internship/residency and year	University of Wisconsin	1974

**Jeffrey House, D.O., Associate Professor**

Medical School / Graduation date	Nova Southeastern College of Osteopathic Medicine	1997
Internship/residency and year	University of Florida – Jacksonville	2001

**Carmen Isache, M.D., Assistant Professor**

Medical School / Graduation date	Gr. T. Popa University of Medicine and Pharmacy	2009
Internship/residency and year	SUNY Downstate Medical Center	2013
Subspecialty training and year	University of Florida, Jacksonville (Infectious Disease)	2015

**Rafik Jacob, M.D., Assistant Professor**

Medical School / Graduation date	Ain Shams University	1994
Internship/residency and year	Rhode Island Hospital/Brown University	2013

**Ghania Masri, M.D., Associate Professor**

Medical School / Graduation date	Damascus University, Syria	1989
Internship and year	Cleveland Clinic Foundation	1992
Residency and year	Case Western Reserve University	1994

**Carlos Palacio, M.D., M.P.H., Professor**

Medical School / Graduation date	University of Miami	1993
Internship/residency and year	University of Florida, Jacksonville	1997
Post-graduate training and year	University of North Florida (MPH, Master of Public Health)	2007

**Pramod Reddy, M.D., Associate Professor**

Medical School / Graduation date	Sri Dev Raj Urs Medical College, India	1992
Internship/residency and year	Stony Brook University Hospital	2000

**Elisa Sottile, M.D., Assistant Professor**

Medical School / Graduation date	Temple University School of Medicine	1993
Internship/residency and year	University of Pennsylvania	1997

PUBLICATIONS

Monographs:

Palacio C, Olney R. Rickets. BMJ publishing group Best Practice Website. (International product on bestpractice.com) Update 2016

Palacio C, Fauzia R. Blast crisis. BMJ publishing group Best Practice Website. (International product on bestpractice.com) Updated 2016

Publications:

Haddad CJ, Haddad-Lacle L, Grewal R, **Bilello L**, Haddad CM. Review of uncommon cutaneous and subcutaneous malignancies. Consultant. Accepted for publication in June 2016 issue.

Al-Saffar F, Ibrahim S, Patel P, **Jacob R**, **Palacio C**, Cury J. Skin rash in the intensive care unit: Stevens-Johnson syndrome, toxic epidermal necrolysis, or a rare manifestation of a hidden cutaneous malignancy: A case report. Mol Clin Oncol. 2016 Mar;4(3):413-415. Epub 2015 Dec 16. PubMed PMID: 26998294; PubMed Central PMCID: PMC4774480.

McCurdy K, Kanar O, Lyons B, Winder J, **Edwards L**. Domestic Violence/Intimate Partner Violence: Screening, Detection and Intervention. Northeast Florida Medicine, Spring 2016, 44-52.

Palfrey W, Jo-Hoy F, **Jacob R**. An unusual adverse effect of a novel oral anticoagulant. J Investig Med 2016;64:488-726. (Abstract)

Isache C, Sands M, Guzman N, Figueroa D. HTLV-1 and HIV-1 co-infection: A case report and review of the literature, accepted for publication in IDCases on March 17th, 2016.

Isache C, Baldeo C, Sands M, McCarter Y, Guzman N, Mercado D, Jankowski C. Implementation of a quality-of-care indicator set into the laboratory reporting system for Staphylococcus aureus (MSSA and MRSA) bacteremia to improve clinical outcomes, accepted for publication in Infectious Diseases in Clinical Practice on March 5th, 2016.

Figueroa D, Guzman N, **Isache C**. Tuberculous Enteritis: A rare complication of miliary tuberculosis, Vol. 2016, Article ID 6949834, 3 pages, 2016. doi:10.1155/2016/6949834, Feb 3rd, 2016.

Isache C, McCarter Y. ASCP LabQ Case study - Clinical Laboratory No. 1612 | Microbiology - published on January 29th, 2016.

Sands M, **Isache C**. Non-cholera Vibrio infections monograph, BMJ Best Practice, Nov 26th, 2015.

Sands M, **Isache C**. Hantavirus infection monograph, BMJ Best Practice, Sept 14th, 2015.

Masri G. Evaluation of hyponatremia. BMJ Point of Care and Best Practice. (International product on bestpractice.com). Update September 2015

Masri G. Evaluation of hypernatremia. BMJ Point of Care and Best Practice (International product on bestpractice.com). Update September 2015

Alexandraki I, **Palacio C**, Mooradian AD. Relative merits of low-carbohydrate versus low-fat diet in managing obesity. South Med J. 2015 Jul;108(7):401-16. doi: 10.14423/SMJ.0000000000000308. Review. PubMed PMID: 26192936.

Alkaddour A, McGaw C, Hritani R, **Palacio C**, Nakshabendi R, Munoz JC, Vega KJ. African American ethnicity is not associated with development of Barrett's oesophagus after erosive oesophagitis. Dig Liver Dis. 2015 Oct;47(10):853-6. doi: 10.1016/j.dld.2015.06.007. Epub 2015 Jul 2. PubMed PMID: 26188839.

Abstracts/Presentations:

Masri G. Obesity. Oral presentation at: OB/GYN Resident Conference. Jacksonville, FL. April 2016

Sottile E. Residents as Teachers. Oral presentation at: Annual Residents as Teachers Seminar. Jacksonville, FL. April 2016

House J. Host - Florida ACP Chapter Annual Residents and Medical Students Meeting. Orlando, FL April 2016

Jacob, R. Diabetic kidney disease awareness for the primary care physician. Oral presentation at: Department of Medicine Grand Rounds, Jacksonville, FL. March 2016

Bilello, L. The Mirror Project: Leadership and Organizational, Cultural and Linguistic Competency Development. Oral presentation at: National Annual Research and Policy Conference on Child, Adolescent and Young Adult Behavioral Health, Tampa, FL. March 2016

House J. Entrustable Professional Activities (EPA's) in GME: Building the bridge connecting real time and real world practice. Oral presentation at: CREOG & APGO Annual Meeting. New Orleans, LA. March 2016

House J. Shoulder and knee arthrocentesis. Oral presentation at: Update in Internal Medicine Annual Meeting, Jacksonville, FL. February 2016

R Ali, C Baldeo, J Perez and **C Isache.** Osteitis in an immunocompromised host. Oral presentation at: AFMR Southern Regional Meeting. New Orleans, LA. February 2016

Isache C. Antibiotic Selection. Oral presentation at: medical student lecture, Jacksonville, FL. February 2016

Alkaddour A, **Palacio C**, Vega K. African Americans have 1/10 to 1/4th the risk of long segment and short segment Barrett's esophagus compared to non-Hispanic whites. Presentation at: OESO 13th World Conference. Monaco. August 31-September 3, 2015

Sottile E. Fellows as Teachers. Oral presentation at: Annual Fellows as Teachers Seminar. Jacksonville, FL October 2015

Editorial Board/Review:

Masri, G. JSciMed Central/JSM Clinical Case Reports.

Palacio C. Section Editor and Reviewer for General Internal Medicine Medstudy 16th edition

HONORS AND AWARDS

Linda Edwards, M.D.	Hanson Professorship of Medicine
Malcolm Foster, M.D.	Board of Directors, ACP Foundation, Vice-Chairman
Alan Halperin, M.D.	Chair, Institutional Review Board, UF & SJMC
Jeff House, D.O.	University of Florida Exemplary Teacher Award 2016
Elisa Sottile, M.D.	University of Florida Exemplary Teacher Award 2016

CLINICAL ACTIVITIES

	AY 15/16
Inpatient Activity	
Numbers of Inpatient Admissions	4073
Outpatient Activity	
Clinic Visits	14417

CONTRACTS AND GRANTS

Investigator	Study Title	Project Period	Funded Amount	Sponsor
Edwards, L (Co-PI)	Evaluate, Develop, and Implement Medication Safety Measures Using Medication Error Claim Reporting Systems and Medical Records	2016	\$18,700	Martin A. Smith Patient Safety and Quality Award
House, J. (Principle)	Standardization of an Ultrasound Guided Procedures Curriculum for an IM Residency	9/2013 – Present	\$10,000	Dean's Grant
Masri, G (Sub-I)	A Placebo-Controlled, Randomized, Double-Blind, Parallel Group, Dose-Finding Trial to Evaluate the Efficacy and Safety of TBS-2 Intranasal Testosterone Gel in Women With Acquired Female Orgasmic Disorder	Aug 14, 2011- Present	\$32,680.00	Trimel Biopharma SRL
Masri, G (Sub-I)	A Phase 3, Randomized, Double-Blind, Placebo-Controlled, Multi-Center Trial to Evaluate the Safety and Efficacy of TX-004HR in Postmenopausal Women with Moderate to Severe Symptoms of Vulvar and Vaginal Atrophy	3/10/2015-11/1/2015		Therapeutics MD, Inc
Masri, G Participant	An Emergency Department to Home Intervention to Improve Quality of Life and Reduce Hospital Use	02/2015 – 02/2018		PCORI
Masri, G (Sub-I)	A Phase 3, Double-Blind, Placebo-Controlled, Randomized, Multi-Center Study to Evaluate the Safety and Efficacy of Estradiol in Combination with Progesterone in Postmenopausal Women with an Intact Uterus: Estradiol to Reduce the Frequency and Severity of Vasomotor Symptoms and Progesterone to Manage the Incidence of Endometrial Hyperplasia	Aug 22, 2013 to present	\$113,520.00	TherapeuticsMD, Inc

Title	Recipient	Amount
Hanson Professorship	Linda Edwards, M.D.	10,808.99

DIVISION OF HEMATOLOGY AND MEDICAL ONCOLOGY
ACADEMIC YEAR 2016 (7/15 – 6/16)

Highlights

The Division of Hematology and Medical Oncology continues to sustain its growth in the clinical and academic mission of the University of Florida with the addition of Dr. Jason Hew who will be joining the Division in September 2016. Regretfully, Dr. Zhou has ended her time here with the division as of June 2016. The division consists of 2 board certified Medical Oncologist and 2 dual boarded in Hematology and Medical Oncology. The division provides inpatient clinical consultation in hematology and medical oncology and maintains a thriving ACGME accredited Oncology Fellowship training program. The division actively participates in training pathology residents, medical students, pharmacy, and nursing students in outpatient and inpatient clinical settings.

Patient care: The Division provides patient care at the UF Health Jacksonville campus Ambulatory Care Center, and UF Health North campus. Our core faculty members of the division include Dr. Fauzia Rana, Dr. Dat Pham, Dr. Lara Zuberi, and Dr. Louise Zhou. The division continues to work closely with Radiation Oncology, Surgical Oncology and the Central Administration of UF Health Jacksonville to provide multimodality care for oncology patients. All of our faculty members work closely with the Proton Therapy Institute to ensure collaboration of patient care, improving patient access and overall quality of care on the inpatient service and in the outpatient clinical setting. The division actively participates in simulation lab workshops, teaching fellows "how to break the bad news". The fellows are also trained on how to perform bone marrow biopsy procedures.

Dr. Rana volunteers at the Social Services Clinic and provides free service to underserved patients. She also serves as secretary for the Social Services Clinic Board. Drs. Rana and Zuberi actively participate in Breast Cancer Awareness programs every six months. Dr. Zuberi has presented twice for the public forum on "What Everyone Should Know about Breast Health," located at the Omni Hotel in Jacksonville. Our division continues to host the Oncology Pharma Expo quarterly. This program has been very successful in boosting faculty and staff moral and building better relationships with industry without disrupting clinical activity.

Each member of the division has a strong role in division activities. Dr. Rana, Division Chief, Hematology and Medical Oncology and Associate Program Director, continues to provide care and leadership as Director of the Adult Sickle Cell Program and serves as key clinical faculty for the Department of Medicine. Dr. Rana serves on the Community Hospice Advisory Board as a member. Beginning this year, Dr. Rana serves on the Mission Track Review Committee, which meets in Gainesville. Drs. Rana and Zuberi serves as important components in the Multidisciplinary Breast Program. Dr. Zuberi is also a delegate of the Transfusion Committee. Dr. Pham is the Fellowship Program Director and works closely with the education of the fellows and continues his efforts in the Multidisciplinary Thoracic Oncology Program. He also serves an active member of the GI Tumor Board. Dr. Louise Zhou was key clinical faculty for the UF Health Jacksonville Cancer Committee and continued her efforts with the Multispecialty GI Cancer Program. All providers in the division work very closely with UF Proton Therapy Institute and the Department of Surgery. Dr. Louise Zhou was the Medical Oncology champion for the Head and Neck Multidisciplinary program with ENT and Radiation Oncology at UF Health Jacksonville.

Education: The Medical Oncology Fellowship, under the direction of Program Director Dr. Dat Pham, has remained strong and matched top candidates with 100% ABIM subspecialty board pass rate, and with 2 positions filled for September 2016. The Medical Oncology Fellowship program successfully continues to maintain its ACGME accreditation.

Our division works closely with the GME office at University of Florida College of Medicine-Jacksonville, playing an active role in the educational core lecture series including Grand Rounds and Oncology Didactic Lecture Series. The physicians provide mentoring and teaching to the residents interested in our specialty. Our faculty supervises Medical Oncology fellows in their outpatient continuity clinics and provides supervision during all bone marrow biopsy procedures.

The division continues to support the Internal Medicine Residency Program through facilitation of night float rotation by Dr. Rana, Medicine Resident's Noon Conference, and Grand Rounds. The division offers a consult experience in hematology and oncology to residents at all training levels. The Oncology Fellowship has rotations at Mayo Clinic Jacksonville (Bone Marrow Transplant). Medical Oncology Fellows have opportunities to contribute at weekly didactic lecture series. Our monthly Journal Club generates discussion on various topics and keeps us up to date on the latest advances in hematology and oncology. Our fellows have submitted peer review manuscripts, several of which were accepted for publication. Dr. Rana serves as key clinical faculty for Internal Medicine and is a member of the Resident Education Committee.

Research: The Division of Hematology/Oncology will begin 2 clinical trials in the upcoming year. All of our faculty actively participate in the UF Proton Therapy research trials. Research in the division varies among the faculty. We have collaborated with Mayo and have been grandfathered into the ALLIANCE cooperate group, as an affiliate site, which merged ACOSOG, CALGB, and NCCTG.

The Hematology/Oncology division produced 3 monographs, 2 abstracts, 7 presentations and 2 posters during the academic year.

LISTING OF FACULTY MEMBERS



Fauzia Rana, M.D., Associate Professor and Division Chief

Medical School / Graduation date	F.J. Medical College, Pakistan	1992
Internship/residency and year	University of Rochester	1990
Subspecialty training and year	Harvard Medical School	1993



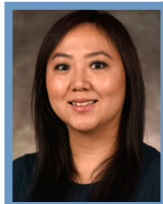
Dat Pham, M.D., Associate Professor

Medical School / Graduation date	University of Florida, Gainesville	1997
Internship/residency and year	University of Florida, Gainesville	2000
Subspecialty training and year	University of Florida, Gainesville	2002



Lara Zuberi, M.D., Assistant Professor

Medical School / Graduation date	Aga Khan University, Pakistan	2000
Internship/residency and year	Henry Ford Hospital	2005
Subspecialty training year	Henry Ford Hospital	2010



Louise Zhou, M.D., Assistant Professor

Medical School / Graduation date	Ross University School of Medicine	2008
Internship/residency and year	University of Florida, Jacksonville	2011
Subspecialty training and year	University of Florida, Jacksonville	2014

PUBLICATIONS

Monographs:

Palacio C, **Fauzia R.** Blast crisis. BMJ publishing group Best Practice Website. January 2009 (International product on bestpractice.com) Updated 2010, 2011, 2012, 2013, 2014, 2015, 2016.

Zaiden R, **Fauzia R.** Evaluation of Anemia. BMJ Best Practice. Updated 2010, 2011, 2012, 2013, 2014, 2015, 2016.

Palacio C, **Fauzia R.** Blast Crisis. BMJ publishing group point-of-care Website. January 2009 (US product on epocrates.com) Updated 2010, 2011, 2012, 2013, 2014, 2015, 2016.

Abstracts:

Hoppe BS, Henderson R, **Pham D**, Cury JD, Bajwa A, Morris CG, D'Agostino H Jr, Flampour S, Huh S, Li Z, McCook B, Nichols RC Jr. A Phase 2 Trial of Concurrent Chemotherapy and Proton Therapy for Stage III Non-Small Cell Lung Cancer: Results and Reflections Following Early Closure of a Single-Institution Study. Int J RADIAT Oncol Biol Phys. May 2016 Epub Nov. 10 2015.

Tariq, K, Yuzhou, L, Jiwani, F, **Rana, F.** Scurvy Induced Hemodynamic Instability. British Journal of Medicine & Medical Research 10 (10): 1-5, 2015, Article no. BJMMR.18066. September 6, 2015.

Presentations:

Pham D. Lung Cancer. Oral presentation at: UF Health Internal Medicine -Grand Rounds; Jacksonville, FL, July 16, 2016.

Hew J, Ning K, **Zhou L, Rana F.** Rituximab Monotherapy in the Management of a Rare Case of an HIV Associated Lymphoproliferative Disorder. Poster Presentation at: UF College of Medicine Research Day; Jacksonville, FL, May 19, 2016.

Minocha V, Hew J, Wang Z, **Zhou L.** A Novel Treatment with Obinutuzumab/Chlorambucil in a Patient with B-cell Polymphocytic Leukemia. Poster Presentation at: UF College of Medicine Research Day; Jacksonville, FL, May 19, 2016.

Zuberi L. Hypercoagulable States. Oral presentation at: UF Health Neurology Grand Rounds; Jacksonville, FL, March 23, 2016.

Zhou L. Hepatocellular Carcinoma. Oral presentation at: UF Health Internal Medicine -Grand Rounds; Jacksonville, FL, March 16, 2016.

Zuberi L. What Everyone Should Know About Breast Health. Moderator at: Public Forum; Jacksonville, FL, February 11, 2016.

Zuberi L. Hypercoagulable States. Oral presentation at: UF Health Internal Medicine -Grand Rounds; Jacksonville, FL, December 16, 2015.

Zuberi L. What Everyone Should Know About Breast Health. Moderator at: Public Forum; Jacksonville, FL, October 15, 2015.

Rana F. Multiple Myeloma. Oral presentation at: UF Health Internal Medicine -Grand Rounds; Jacksonville, FL, August 12, 2015.

HONORS AND AWARDS

Fauzia Rana, M.D.

12th Annual Healthcare Hero Award 2015

Dat Pham, M.D.

Best Doctor by Jacksonville Magazine 2016
Top Doctor by Castle Connolly May 2016

CLINICAL ACTIVITIES

	AY 15/16
Inpatient Activity	
Number of Inpatient Admissions	751
Outpatient Activity	
Clinic Visits	6545

CONTRACTS AND GRANTS

Principal Investigator	Study Title	Project Period	Sponsor	Award Amount
Rotondo, R	UFJ-2014-209 Randomized Phase II Trial of Hypofractionated Dose-Escalated Photon IMRT or Proton Beam Therapy Versus Conventional Photon Irradiation With Concomitant and Adjuvant Temozolomide in Patients With Newly Diagnosed Glioblastoma.	10/24/2014-Present	UF Proton Therapy Institute	Not Funded
Nichols, R.	UFJ-2014-161 A Phase I Study of Stereotactic Body Radiotherapy (SBRT) for the Treatment of Multiple Metastases.	08/27/2014-Present	UF Proton Therapy Institute	Not Funded
Nichols, R.	UFJ-2011-136 A Phase II Trial of Postoperative Proton Radiotherapy with Concomitant Chemotherapy for Patients with Resected Pancreatic Adenocarcinoma.	07/11/2011-Present	UF Proton Therapy Institute	Not Funded
Nichols, R.	UFJ-2008-46 A Study Using Neoadjuvant Proton Beam Radiation Therapy and Chemotherapy for Marginally Resectable Carcinoma of the Pancreas.	04/16/2008-Present	UF Proton Therapy Institute	Not Funded
Nichols, R.	UFJ-2007-69 A Study Using Photon/Proton Beam Radiation Therapy and Chemotherapy for Unresectable Carcinoma of the Pancreas.	5/15/2007-Present	UF Proton Therapy Institute	Not Funded

DIVISION OF INFECTIOUS DISEASE
ACADEMIC YEAR 2016 (7/15 - 6/16)

Highlights

The Division of Infectious Disease continued its clinical and academic missions during this past year. The division is comprised of 3 university based infectious diseases consultants, all of whom are dually boarded in Internal Medicine and Infectious Disease, with an additional 11 ancillary faculty composed of board certified infectious diseases physicians, doctoral level microbiologists and doctoral level pharmacists who are actively involved in various aspects of the fellowship training program.

The division provided inpatient clinical consultation in Infectious Disease at the UF Health-Jacksonville; Hospital Infection Control and Antimicrobial Stewardship direction at UF Health, outpatient travel and tropical medicine services, outpatient infectious diseases consultation and clinical infectious diseases research. The division maintained an ACGME accredited Infectious Diseases fellowship training program and actively participated in the training of internal medicine residents and medical students in inpatient and outpatient infectious diseases.

Members of the division also assumed administrative and teaching roles in ID division and IM activities. Dr. Sands is the university ID Division Chief, ID Fellowship Program Director and the Chair of Hospital Infection Control for UF Health. Dr. Guzman was the Chair of and Antimicrobial Stewardship Programs for UF Health, the ID Fellowship Associate Program Director and the Associate Program Director for the Core Internal Medicine Residency.

Patient care:

University ID Division inpatient and hospital based activity: The division provided full time inpatient infectious disease consultation throughout the UF Health Jacksonville Hospital system. During the 2015-2016 academic year, the division performed 912 inpatient infectious disease consultations with over 2700 subsequent follow-up visits at UF Health.

Outpatient services: The division offered outpatient ID consultation by referral at the Emerson and the Ambulatory Care Clinic (ACC) subspecialty clinics. During the 2015-2016 academic year, there were 886 outpatient ID consultative visits for HIV/AIDS and general Infectious Disease diagnoses including chronic osteomyelitis and MRSA infection.

Education:

Grand Rounds: The division actively participates in presenting at Medicine Grand Rounds and as regular attendees. This academic year faculty gave presentations at four UF Grand Rounds and two topical lectures at the Internal Medicine Annual Update.

Fellowship Training: The division maintained an ACGME accredited fellowship in Infectious Disease with one fellow for each of the two clinical fellowship years. The fellowship program has been re-accredited on a five year cycle. The fellowship training is unique in offering two months of clinical microbiology, dedicated research time, two months of training in solid organ transplantation ID at the Mayo Clinic, one month training in Pediatric Infectious Disease at Wolfson Children's Hospital and one month as a junior ID faculty consultant in the UF Health MICU, in addition to 15 months experience as the consultant and teaching fellow on the general ID in-patient consult service at UF Health.

Our Infectious Disease fellows continue to distinguish themselves through maintaining a 100% ID boards pass rate and achieving successful employment as full time Infectious Diseases consultants in a variety of metropolitan areas, including San Francisco, Atlanta, Baton Rouge, Tampa, Orlando and here in Jacksonville.

Resident Training: Faculty provided a 12 lecture series ID core curriculum conference for the residents; ID consultation teaching and clinical rounds; outpatient HIV/AIDS continuity clinics; and resident ID board review sessions.

Medical Student Education: Medical students from UF Gainesville, other US sites and internationally, rotate on the infectious disease consultative service and the outpatient ID clinics at both the ACC and Emerson campuses.

ID Division Conference Schedule: The division maintained a full conferencing schedule with topics including: core infectious diseases topics, regularly scheduled case conferences; ID board reviews; monthly journal club; HIV topical reviews; monthly TB cases and topical reviews; monthly research conferences; travel and tropical medicine conferences; transplantation ID conferences; and monthly Med/Peds ID joint conferences.

Cooperative extramural resident and fellows' training: As part of their curricula, Mayo Clinic ID fellows, UF intensivist fellows, UF Pediatric ID fellows and UF Podiatric-Orthopedic residents rotated on the UF ID inpatient consultative service and in the HIV outpatient clinics.

Research: Dr. Sands was the principal investigator on one NIH sponsored research grant through the INSITE network; the START study (Strategic Timing of Anti-Retroviral Therapy study) to define the appropriate time to initiate antiviral therapy for HIV-infected patients, that was completed during the academic year.

Publications and presentations this past academic year included two abstracts presented at UF Research Day, five published ID monographs and 25 journal articles published in peer reviewed journals.

LISTING OF FACULTY MEMBERS



Nilmarie Guzman, M.D., Assistant Professor

Medical School / Graduation date	Ponce School of Medicine, Ponce, PR	1996
Internship/residency and year	Damas Hospital, Ponce, PR	1999
Subspecialty training and year	University of Florida College of Medicine-Jacksonville	2006



Diana Mercado, M.D., Assistant Professor

Medical School / Graduation date	University of the Philippines	2002
Internship/residency and year	Albert Einstein Medical Center	2008
Subspecialty training and year	Drexel University College of Medicine	2010



Michael Sands, M.D., M.P.H.&T.M., Professor and Division Chief

Medical School / Graduation date	Georgetown University, Washington, DC	1972
Internship/residency and year	St. Mary's Hospital, San Francisco, CA	1974
Subspecialty training and year	Tulane University School of Public Health & Tropical Medicine	1975
	Louisiana State University School of Medicine (Infectious Disease)	
	Northwestern Memorial Hospital, Dept. of Pathology, Clinical Microbiology Section (Clinical Microbiology)	1977
		1981

Ancillary Teaching Faculty:**UF Health Hospital Critical Care**

Abubakr Bajwa, MD
 James D. Cury, MD
 Lisa Jones, MD
 Adil Shujaat, MD

UF Health Hospital Microbiology Laboratories

Yvette McCarter, Ph.D.

UF Health Hospital Division of Pharmacy and Antimicrobial Stewardship

Christopher Jankowski, Pharm D.

Mayo Clinic – Transplantation ID

Walter Hellinger, M.D.
 Julio Mendez, M.D.
 Salvatore Alvarez, M.D.
 Lisa Brumble, M.D.
 Wendy Bosch, M.D.

Wolfson Childrens' Hospital – Pediatric ID

Nizar Maraga, MD
 Ana Alvarez, M.D.
 Ayesha Mirza

State of Florida Department of Health Laboratories

Sharon Crowe, B.S., M.S.

PUBLICATIONS

French MA, Cozzi-Lepri A, Arduino RC, Johnson M, Achhra AC, Landay A; for the INSIGHT SMART Study Group including **Sands M**. Plasma levels of cytokines and chemokines and the risk of mortality in HIV-infected individuals: a case-control analysis nested in a large clinical trial. AIDS. 2015. [Epub ahead of print] PMID: 25695873

Borges ÁH, O'Connor JL, Phillips AN, Rönsholt FF, Pett S, Vjecha MJ, French MA, Lundgren JD; for the INSIGHT SMART including **Sands M** and ESPRIT Study Groups and the SILCAAT Scientific Committee. Factors associated with plasma IL-6 levels during HIV infection. J Infect Dis. 2015. pii: jiv123. [Epub ahead of print] PMID: 25722296

The Insight Start study group including **Sands M**. Initiation of antiretroviral therapy in early asymptomatic HIV infection. N Engl J Med July 20, 2015

Achhra AC, Mocroft A, Ross MJ, Ryom L, Lucas GM, Furrer H, Neuhaus J, Somboonwit C, Kelly M, Gatell JM, Wyatt CM for the INSIGHT START Study Group including **Sands M**. Kidney disease in antiretroviral-naïve HIV-positive adults with high CD4 counts: prevalence and predictors of kidney disease at enrolment in the INSIGHT Strategic Timing of AntiRetroviral Treatment (START) trial. HIV Med 2015; 16:(suppl S1):55-63

Achhra AC, Phillips A, Emery S, MacArthur RD, Furrer H, De Wit S, Losso M, Law MG for the INSIGHT SMART and FIRST Study Groups including **Sands M**. Pre-therapy inflammation and coagulation activation and long-term CD4 count responses to the initiation of antiretroviral therapy. HIV Med 2015; DOI: 10.1111/hiv.12258.

Baker JV, Engen NW, Huppler Hullsiek K, Stephan C, Jain MK, Munderi P, Pett S, Duprez D for the INSIGHT START Study Group. Assessment of arterial elasticity among HIV-positive participants with high CD4 cell counts: a substudy of the INSIGHT Strategic Timing of AntiRetroviral Treatment (START) trial including **Sands M**. HIV Med 2015; 16:(suppl S1):109-118

Baxter JD, Dunn D, White E, Sharma S, Geretti AM, Kozal MJ, Johnson MA, Jacoby S, Llibre JM, Lundgren J for the INSIGHT START Study Group including **Sands M**. Global HIV-1 transmitted drug resistance in the INSIGHT Strategic Timing of AntiRetroviral Treatment (START) trial. HIV Med 2015; 16:(suppl S1):77-87

Carr A, Grund B, Neuhaus J, Schwartz A, Bernardino JI, White D, Badel-Faesen S, Avihingsanon A, Ensrud K, Hoy J for the INSIGHT START Study Group including **Sands M**. Prevalence and risk factors for low bone mineral density in untreated HIV infection: a substudy of the INSIGHT Strategic Timing of AntiRetroviral Treatment (START) trial. *HIV Med* 2015; 16:(suppl S1):137-146

Denning E, Sharma S, Smolskis M, Touloumi G, Walker S, Babiker A, Clewett M, Emanuel E, Florence E, Papadopoulos A, Sánchez A, Tavel J, Grady C for the INSIGHT START Study Group including **Sands M**. Reported consent processes and demographics: a substudy of the INSIGHT Strategic Timing of AntiRetroviral Treatment (START) trial. *HIV Med* 2015; 16:(suppl S1):24-29

French MA, Cozzi-Lepri A, Arduino RC, Johnson M, Achhra AC, Landay A for the INSIGHT SMART Study Group including **Sands M**. Plasma levels of cytokines and chemokines and the risk of mortality in HIV-infected individuals: a case-control analysis nested in a large clinical trial. *AIDS* 2015; 29:847–851.

Kunisaki KM, Niewoehner DE, Collins G, Nixon DE, Tedaldi E, Akolo C, Kityo C, Klinker H, La Rosa A, Connett JE for the INSIGHT Start Study Group including **Sands M**. Pulmonary function in an international sample of HIV-positive, treatment-naïve adults with CD4 counts >500 cells/μL: a substudy of the INSIGHT Strategic Timing of AntiRetroviral Treatment (START) trial. *HIV Med* 2015; 16:(suppl S1):119-128

Law MG, Achhra A, Deeks SG, Gazzard B, Migueles SA, Novak RM, Ristola M for the INSIGHT START Study Group including **Sands M**. Clinical and demographic factors associated with low viral load in early untreated HIV infection in the INSIGHT Strategic Timing of AntiRetroviral Treatment (START) trial. *HIV Med* 2015; 16:(suppl S1):37-45

O'Connor JL, Gardner EM, Esser S, Mannheimer SB, Lifson AR, Telzak EE, Phillips AN for the iNSIGHT SMART Study Group including **Sands M**. A simple self-reported adherence tool as a predictor of viral rebound in people with viral suppression on antiretroviral therapy. *HIV Med* 2015; DOI: 10.1111/hiv.12284.

Soliman EZ, Sharma S, Arastéh K, Wohl D, Achhra A, Tambussi G, O'Connor J, Stein JH, Duprez DA, Neaton JD, Phillips A for the INSIGHT START Study Group including **Sands M**. Baseline cardiovascular risk in the INSIGHT Strategic Timing of AntiRetroviral Treatment (START) trial. *HIV Med* 2015; 16:(suppl S1):46-54.

Murray DD, Suzuki K, Law M, Trebicka J, Neuhaus J, Wentworth D, Johnson M, Vjecha MJ, Kelleher AD, Emery S, INSIGHT ESPRIT and SMART Study Groups including **Sands M**. Circulating microRNAs in sera correlate with soluble biomarkers of immune activation but do not predict mortality in ART treated individuals with HIV-1 infection: a case control study. *PLoS ONE* 2016; 10(10): e0139981. doi:10.1371/journal.pone.0139981; PMID: PMC4605674

A Stewardship Approach To Optimize Antimicrobial Therapy through Use of a Rapid Microarray Assay on Blood Cultures Positive for Gram-Negative Bacteria. Sothoron C, Ferreira J, **Guzman N**, Aldridge P, McCarter Y, Jankowski C. *J Clin Microbiol.* 2015 Nov; 53(11): 3627–3629. Published online 2015 Aug 19. doi: 10.1128/JCM.02161-15

Figueroa D, **Guzman N**, Isache C. Tuberculous Enteritis: A Rare Complication of Miliary Tuberculosis, *Case Rep Infect Dis*, 2016 Feb 28.

Isache C, Baldeo C, **Sands M**, McCarter Y, **Guzman N**, **Mercado D**, Jankowski C. *Implementation of a quality-of-care indicator set into the laboratory reporting system for Staphylococcus aureus (MSSA and MRSA) bacteremia to improve clinical outcomes*, accepted for publication in *Infectious Diseases in Clinical Practice* on March 5th, 2016

Isache C, **Sands M**, **Guzman N**, Figueroa D. HTLV-1 and HIV-1 co-infection: A case report and review of the literature, *IDCases*, 2016 April 7.

Figueroa D, Isache C, **Sands M**, **Guzman N**, An Unusual Case of Acute Transverse Myelitis caused by HSV-1 infection, *IDCases*, 2016 June 22

Presentations:

Guzman N. Basics of Antiretroviral Therapy, UF Internal Medicine Update, Hyatt Jacksonville, February 2016

Sands M. Vaccinations for Adults – an Update, UF Internal Medicine Update, Hyatt Jacksonville, February 2016

Monographs and Book Chapters:

Guzman N. Leptospirosis, BMJ Point of Care, E-pocrates electronic journal 2016; www. Pointofcare.bmj.com

Guzman N. Coxiella Burnetti, BMJ Point of Care, E-pocrates electronic 2016; www. Pointofcare.bmj.com

Palnitkar R, **Sands M.** Mucormycosis. BMJ Point-of-Care 2009, updated 2016; www.pointofcare.bmj.com.

Sands M. Non-Cholera Vibrio infections. BMJ Point-of-Care 2009, updated 2016; www.pointofcare.bmj.com.

Sands M, Isache C. Hantavirus infections. BMJ Point-of-Care 2009, updated 2016; www.pointofcare.bmj.com.

CLINICAL ACTIVITIES

	AY15/16
Inpatient activity	
Consults	912
Outpatient activity	
Clinic Visits	886

GRANTS AND CONTRACTS

Principal Investigator	Study Title	Project Period	Sponsor
Sands, M.	START – Strategic timing of antiretroviral therapy – A multi-national study. NIH – INSITE network	12/1/10-5/31/16	INSIGHT - NIH

DIVISION OF NEPHROLOGY AND HYPERTENSION
ACADEMIC YEAR 2016 (7/15 - 6/16)

Highlights

In the 2015 – 2016 academic year, the Division of Nephrology and Hypertension continued to make headway in meeting the goals of the academic mission.

In patient care, the offsite dialysis venture with DCI at the Gateway Unit has continued to expand the hemodialysis patient population and services at that site. In education, the Nephrology fellowship proceeded to thrive with continuation of simulation trainings, the pediatric nephrology experience, and off-site renal transplant rotations. Dr. Leighton James continued to provide direction for the fellows' Renal Physiology course. The joint Renal Pathology conference with Mayo Clinic Jacksonville and Mayo Clinic Rochester continued as a successful and important piece of the educational program, as did the transplant rotation at Mayo Clinic Jacksonville. In addition, our annual Update in Nephrology & Hypertension CME Symposium was once again a success in 2016, with grant support from Dialysis Clinics Inc. and visiting professors from the University of Miami VAMC and Georgia Regents University. The division ARNP's continued their excellent care for our outpatient hemodialysis population. Dr. Ashwani Gupta left the group at the end of the academic year.

Dr. Leighton James presented his growth factor research work on diabetic nephropathy at the American Society of Nephrology meeting. The laboratory of Dr. Charles Heilig continued with funded basic research studies into the pathogenesis of diabetic and nondiabetic glomerulosclerosis in mice, with a focus on the roles of Mechano-Growth Factor (MGF) and glucose transporters. Dr. Charles Heilig and Dr. Leighton James were recipients of a new, 3-year laboratory Research Grant from DCI, Inc. Dr. Yongxin Gao, Assistant Scientist in the Nephrology Research Laboratories, continued her collaborative research work on glucose transporters, MGF and other growth factors in kidney disease. The Nephrology Research Laboratories also continue to participate in the University of Florida Diabetes Institute to contribute type 2 diabetes research to the mission.

Fellows and faculty attended and participated in meetings of the American Society of Nephrology, the National Kidney Foundation, a national Home Dialysis Educational Seminar, the Update in Nephrology & Hypertension 2016 symposium and the UFCOM-J Research Day Symposium.

Patient care: The Division of Nephrology provides physician services and the medical director for two outpatient dialysis units and provides services to the inpatient UF Health Jacksonville acute hemodialysis unit. The newer Gateway Dialysis Unit in Jacksonville continues to grow with hemodialysis services at that site. The Gateway Dialysis Unit has 24 hemodialysis chairs and approximately 80 patients. The total chronic dialysis population cared for by UFCOM-J nephrologists has reached approximately 290 patients, hemodialysis and peritoneal dialysis patients included. Dr. Ashwani Gupta had nephrology clinics at Emerson Medical Plaza and UF North. Additional faculty clinics are staffed at the Towers Clinic on the downtown campus by the Nephrology faculty members. The Nephrology clinics at the UF Health Jacksonville campus include the Nephrology faculty clinics, the anemia clinic, the post-renal transplant clinic, the fellows' continuity clinics, the correctional facility clinic, the HD outpatient center, the PD clinic, and fellow participation in an associated vascular access clinic located in the Department of Surgery. The inpatient Nephrology consult services continued with a high level of activity and a daily combined census of approximately 25-45 patients. There are two separate Nephrology hospital services: acute renal disease & renal transplant consults, and the chronic dialysis consults. These services continue to provide important educational platforms for fellows, medical residents & students. Dr. Gupta was Medical Director of Dialysis Services, and worked to continuously improve these services. Dr. Ronald Mars continued in his position as Quality Officer for the division.

The division has successfully worked with the Department of Surgery over the last several years to improve placement of permanent vascular access for patients preparing for hemodialysis, and improvements have been recognized toward goals of the Fistula First Program. The post-renal transplant clinic continued to serve as another platform for education of the fellows and care of patients previously transplanted at this program.

Education: Dr. Leighton James, then Associate Professor of Medicine and Assistant Program Director from 2011–2013, has been promoted to Professor of Medicine. He initiated the fellows' Renal Physiology Course in 2010, which continues as an important addition to the nephrology educational experience. The joint Renal Pathology conference with UF Jacksonville, Mayo Jacksonville and Mayo Rochester, has continued to be an important educational component for the Nephrology Fellowship program. The Update in Nephrology & Hypertension 2016 CME Symposium provided by the division was very well attended and well received. This is an important educational venue for fellows and faculty alike. The division plans another course in the spring of 2017. Visiting professors Dr. Leopoldo Raij, Dr. Stanley Nahman and Dr. Donald Kohan provided special lectures in renal physiology and molecular biology during the academic year, which complemented the fellows' educational program.

The Nephrology faculty continue to participate in educational programs for the Internal Medicine residents, including the night float rotation, Medicine residents' noon conference, Nephrology clinics & the Nephrology consult rotation. The Mayo Clinic Jacksonville Renal Transplant Rotation for UF-Jacksonville Nephrology fellows continued successfully and complements the Nephrology training program at UF Health. The ACGME-required milestones have been incorporated into the fellowship training program and rotation evaluations.

Research: The topics of research studies in the division spanned from anemia management in dialysis patients, to dialysis catheter studies, glucose transporter & growth factor roles in diabetic glomerular disease, nondiabetic glomerular disease and renal transplant rejection.

Dr. Heilig's laboratory focuses on glucose transporter regulation of glomerulosclerosis, and more recently on a potential role for Mechano-Growth Factor (MGF) in both diabetic and nondiabetic kidney disease. This laboratory continues to be funded from outside sources. Dr. James' laboratory focuses on growth factors in the pathogenesis of diabetic nephropathy and he is Co-Principal Investigator with Dr. Heilig on a new laboratory Research Grant. Dr. Poenariu's research investigates mechanisms of cardiac disease in dialysis patients. Dr. Mars' research focuses on the efficacy of different brands/types of hemodialysis catheters in the outpatient setting.

The Nephrology fellows participated in various different research studies & scholarly activities as part of their research training. Fellows also attended and participated in research activities at the American Society of Nephrology Meeting, the Southern AFMR meeting and the National Kidney Foundation Meeting. The Nephrology Division produced 2 publications, and 6 abstracts and presentations. There were also 3 active grants in the division this year (2 Research & 1 Education grants).

Special Initiatives:

Nephrology & Hypertension Annual Update, Jacksonville, FL: This year's meeting, organized by the UFCOM-Jacksonville Division of Nephrology, was held at the Hyatt Regency Hotel in Jacksonville with strong attendance by local healthcare professionals, and was well received. This annual meeting provides education and CME credits for doctors, nurses and others involved in the care of patients with renal disease.

Nephrology Fellows' QI Project in Dialysis: Dr. Gupta directed this important activity which helped to fulfill the ACGME – required competency requirements.

Nephrology Fellows' Patient Safety Project: This Fistula-First Project includes, but is not limited to, fellow tracking of AV-fistula placement and outcomes from the time of referral to dialysis initiation and beyond. Goals include optimizing AVF function for initiation of dialysis and reduction of vascular access complications once dialysis has begun.

Simulation Laboratory Experiences: The Nephrology fellows received Institutional Patient Safety Training in the Simulation Laboratory. They also participated in the annual Nephrology simulation laboratory experiences for temporary hemodialysis catheter placement and renal biopsy.

Fistula First Initiative: Faculty and fellows continue to participate in this QI and patient safety initiative, aimed at improving patient outcomes on hemodialysis.

LISTING OF FACULTY MEMBERS



Charles Heilig, M.D., Professor, Division Chief

Medical School / Graduation date	University of Minnesota	1984
Internship/residency and year	Mayo Clinic Rochester	1987
Subspecialty training and year	Brigham and Women's Hospital, Harvard Medical School	1990



Ronald Mars, M.D. Associate Professor

Medical School / Graduation date	St Louis University	1972
Internship/residency and year	Emory University	1976
Subspecialty training and year	Emory University	1978



Leighton James, M.D., Associate Professor

Medical School / Graduation date	University of Toronto	1994
Internship/residency and year	University of Toronto	1997
Subspecialty training and year	University of Toronto	1999



Ashwani Gupta, M.D., Assistant Professor

Medical School / Graduation date	All India Institute of Medical Sciences	2003
Internship/residency and year	Michigan State University	2008
Subspecialty training and year	Henry Ford Hospital	2010



Andreea Poenariu, M.D., Assistant Professor

Medical School / Graduation date	University of Medicine & Pharmacy Victor Babes, Romania	1998
Internship/residency and year	New York Downtown Hospital, Cornell Affiliated	2010
Subspecialty training and year	Brown University	2012

**Yongxin Gao, M.D., Assistant Scientist**

Medical School/Graduation date
Postdoctoral training and year

Jiamusi Institute of Medicine, China

Department of Pharmacology, University of Florida

1991

2011

PUBLICATIONS

Manuscripts:

Brookins SM, Ormenisan C, Makary RF, Monteiro CI, **James LR**. The bumpy lumpy kidney that dumped protein: granulomatous glomerular and tubulointerstitial nephritis. *Kidney Int*. 2015 Oct; 88(4):917. doi: 10.1038/ki.2015.11

Hasan AA, Makary R, **James LR**. Rapidly Progressive Glomerulonephritis in Autosomal Dominant Polycystic Kidney Disease; in Polycystic Kidney Disease. Xiaogang Li (Editor), pp 471- 484, 2015.

Abstracts & Presentations:

James LR, Gao Y. Reduction in CTGF Leads to Increased Proliferation Through Influences on Claudin1 and Extracellular Matrix Protein Spondin-2. JASN (abstract), 2015.

Gao Y, James LR, Heilig CW. Mechano-Growth Factor Regulates mTOR and other Growth Factor Expression in Mouse Mesangial Cells, Enhancing Cell Proliferation and Extracellular Matrix Production: Implications for Diabetic Glomerulosclerosis. JASN (abstract), 2015.

Gao Y, Makary RF, Monteiro CB, James LR, Heilig CW. Elevated Glomerular Mechano-Growth Factor and Vascular Endothelial Growth Factor in Chronic Allograft Nephropathy is Associated with Activation of Erk 1/2. JASN (abstract), 2015.

Gao Y, Makary RF, Adam-Eldien R, Baher A, James LR, Heilig KO, Heilig CW. Glucose Transporter Role in MGF-Induced Glomerulosclerosis and Translation to Human Glomerular Disease. Gordon Research Conference on Membrane Transport Proteins, Barga, Italy, 6/2016.

Heilig CW. Glucose Transporter Roles in Glomerulosclerosis and Translation to Human Disease. Division of Nephrology, University of Regensburg, Regensburg, Germany, 6/2016.

Heilig CW. MGF and Glucose Transporter Interactions in Glomerulosclerosis Department of Molecular Biology, University of Regensburg, Regensburg, Germany, 6/2016.

HONORS AND AWARDS

Heilig, Charles. European Horizon 2020 Research Grant Programme; Advisory Board Member, 2015 – 2020.

Heilig, Charles. Reviewer, Dept. of Defense, CDMRP Grants, 2016.

CLINICAL ACTIVITIES

Inpatient activity	AY 15/16
Initial Inpatient Encounters	1070
Inpatient dialysis treatments	4120
Outpatient activity	
Clinic visits	3291
Outpatient dialysis visits (full month)	3231

CONTRACTS AND GRANTS

Principal Investigator	Title	Project period	Sponsor	Award Amount
Heilig, C	Roles of GLUT1 & Glucose in the Progression of Nondiabetic Glomerulosclerosis	2/2012 – 1/2016	Dialysis Clinics Inc.	\$385,000
Mars, R	Update in Nephrology & Hypertension 2016	4/2016	Dialysis Clinics Inc.	\$30,000
Heilig, C	Mechano – Growth Factor (MGF) Roles in Diabetic Glomerulosclerosis - A New Factor Promoting Diabetic Kidney Disease	7/2016 – 6/2019	Dialysis Clinics Inc.	\$346,599

DIVISION OF PULMONARY, CRITICAL CARE AND SLEEP MEDICINE
ACADEMIC YEAR 2016 (7/15 - 6/16)

Highlights

The Division of Pulmonary, Critical Care and Sleep Medicine has shown growth with Dr. Amitesh Agarwal joining the Division in July 2016. The fellowship training program continues to be popular with over 300 applications for the two available positions per year. Clinically, we have had continued growth with expansion of Pulmonary Disease and Sleep clinics at UF North. Academically, the division continues to be productive in the areas of clinical and original research and publications. The faculty was involved as moderators and presenters for various sessions in Society of Critical Care Medicine, Pulmonary Hypertension Association and ATS conferences. The fellows, under the mentorship of faculty, are engaged in a number of clinical studies. The division had a number of abstracts presented in national and international conferences and was represented in various national and international meetings in the form of providing educational lectures.

Patient care: The division faculty staffs a number of specialized and general pulmonary clinics. The asthma clinic, under the supervision of Dr. Cury, continues to be a part of the American Lung Association Asthma Clinical Research Network and now is involved in successful industry funded clinical research in this arena. We added exhaled nitric oxide (eNO) testing abilities to the asthma clinic. The division continues to be involved with the Pulmonary Rehabilitation program in conjunction with the Department of Physical Therapy.

The pulmonary hypertension clinic continues to be a nationally known referral center with patients being referred from regions all over the east coast. As member of the Pulmonary Hypertension Association, it is set to become a center of comprehensive care. The clinic currently manages over 250 pulmonary hypertension patients. Performing right heart catheterizations in a dedicated suite has led to excellent patient throughput. The program is preparing to undergo certification as a Center of Comprehensive Care (CCC) under Pulmonary Hypertension Association (PHA).

Janice Wood, RRT continues to be the Pulmonary Hypertension and Interstitial Lung Disease Program Coordinator.

Under Dr. Jones' supervision, the Interstitial Lung Disease and Sarcoidosis clinic continues to expand and is involved in numerous clinical trials in the area of IPF.

The fellows' continuity clinic is staffed by at least 5 fellows once a week and supervised by faculty. The number of pulmonary function tests performed has also accordingly increased.

The thoracic oncology clinic continues its multidisciplinary approach to patients with thoracic malignancy. The division successfully initiated the lung cancer screening program. The already extensive interventional pulmonary program acquired a radial ultra sound probe for peripheral lung lesions.

The inpatient pulmonary consult service continues to be busy and, with the continued evolution of the bronchoscopy suite and the number, efficiency and timeliness of bronchoscopic procedures offered by the division were enhanced.

Education: The faculty has been invited to present lectures at international conferences such as PHA, Chest and ATS in the past year, which is a reflection of national recognition of our division.

The division continues to play an active role in educational core lecture series including Grand Rounds and Updates in Internal Medicine 2015-2016. The division faculty also has an active role in the educational

lectures for a variety of residency programs including emergency medicine, obstetrics, internal medicine and trauma critical care. Dr. Cury was honored with the Exemplary Teacher Award.

The pulmonary and critical care fellowship program, under the direction of Dr. Cury as Program Director, has been doing extremely well. The board pass rate has remained at 100% for both Critical Care and Pulmonary exams. Dr. Seeram took over the Associate Program Director position and, along with Dr. Cury, is responsible for coordinating the educational activities for the fellowship. The fellows are regularly mentored by a faculty member in preparation and presentation of lectures.

The division was involved in various regional/national/international meetings with faculty representing the University of Florida College of Medicine-Jacksonville by providing educational lectures in various topics of interest.

The faculty continues to mentor and supervise family medicine residents from the Navy residency program during their rotation in medical intensive care unit and have always received very positive feedback from the leadership of that program. In addition, we have been active in training nurse practitioners and physician assistants not only from the University of Florida sponsored training programs but also for the nurse practitioners.

Research: The division has been very successful in obtaining and continuing its clinical research trials along with funded research. The funded research includes dean's grants, UF clinical quality grant and investigator initiated trials.

The number of internal unfunded clinical research protocols has also increased substantially resulting in quality abstracts being presented at national and international meetings.

A dedicated clinical research coordinator, Minal Patel, has enabled the division to participate in more hospital based clinical research protocols including sleep medicine.

The faculty has had an increasing number of publications in peer review journals and has a number of manuscripts in preparation. Close collaboration with other departments with common research interests is the key to future protocols and publications.

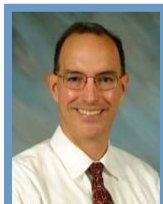
The focus of the division is to enhance collaboration with other departments and regional centers and continue to strive for excellence in this arena.

LISTING OF FACULTY MEMBERS



Abubakr Bajwa, M.D., Associate Professor and Division Chief

Medical School / Graduation date	King Edward Medical College	1998
Internship/residency and year	University of South Dakota	2003
Subspecialty training and year	Mayo Graduate School of Medicine	2007



James D. Cury, M.D., Associate Professor

Medical School / Graduation date	University of Miami	1981
Internship/residency and year	Barnes Hospital/Washington	1984
Subspecialty training and year	Washington University	1987

**Lisa Jones, M.D., Assistant Professor**

Medical School / Graduation date	University of Cincinnati	1998
Internship/residency and year	University Hospital Cincinnati	2001
Subspecialty training and year	Naval Medical Center	2007

**Adil Shujaat, M.D., Assistant Professor**

Medical School / Graduation date	King Edward Medical College	1998
Internship/residency and year	St. Luke's Roosevelt Hospital Center	2003
Subspecialty training and year	St. Luke's Roosevelt Hospital Center	2006

**Mariam Louis, M.D., Assistant Professor**

Medical School / Graduation date	McGill University	2000
Internship/residency and year	McGill University	2003
Subspecialty training and year	McGill University (Pulmonary Medicine)	2005
	Johns Hopkins University (Sleep Medicine)	2007

**Vandana Seeram, M.D., Assistant Professor**

Medical School / Graduation date	University of West Indies	2001
Internship/residency and year	University of Florida/Jacksonville	2009
Subspecialty training and year	University of Florida/Jacksonville	2012

PUBLICATIONS

Manuscripts

Bajwa AA, Bhatti H, **Jones L**, **Louis M**, **Cury JD**, **Seeram V**, **Shujaat A**. Operator dependent factors implicated in failure of non-invasive positive pressure ventilation (NIPPV) for respiratory failure. *The Clin Resp Journal*. 2015 Dec 10. doi: 10.1111/crj.12434. [Epub ahead of print]

Gupta E, Kunjal R, **Cury JD**. Severe Hyponatremia Due to Valproic Acid Toxicity. *Journal of clinical medicine research* 2015; 7: 717-719.

Ramsaran VK, **Seeram VK**, **Cury J**, Shujaat A. A Large Pleural Effusion following Abdominal Aortic Surgery. *Case reports in pulmonology* 2015; 2015: 254010.

Baldeo C, Ali R, **Seeram V**, House J. Lung cancer presenting as a soft-tissue metastasis. *Case reports in oncology* 2015; 8: 185-188.

Bajwa AA, Ferreira J. What's New in Critical Illness and Injury Science, Pneumonia prevention in the ICU remains a challenge. *Int J Crit Illn Inj Sci*. *Int J Crit Illn Inj Sci*. 2016 Jan-Mar;6(1):1-2.

Flampouri S, Huh SN, **Bajwa AA**, Morris C, D'Agostino H, McCook B, Hoppe BS. A Phase II Trial of Concurrent Chemotherapy and Proton Therapy for Stage 3 Non-Small Cell Lung Cancer: Results and Reflections following Early Closure of a Single-Institution Study. *Int J Radiat Oncol Biol Phys*. 2016 May 1;95(1):517-22.

El-Sayed I, **Bajwa AA**, White RD. Assessment Pulmonary Arterial Hypertension by magnetic Resonance Imaging. Tomography. 2015 Sep; 1 (1), 23-29.

Ramdass A, Qureshi T, Matharu J, **Cury J**, **Seeram V**. An unusual case of postpartum dyspnea. *Chest* 2015; 147: e38-43.

El-Sayed I, **Bajwa AA**. Severe Pulmonary Arterial Hypertension: Comprehensive Evaluation by Magnetic Resonance Imaging. Case Reports in Radiology, vol. 2015, Article ID 946920, 5 pages, 2015. doi:10.1155/2015/946920.

Al-Saffar F, Gupta E, Siddiqi F, **Jones LM, Louis M, Seeram V, Cury JD, Bajwa AA, Shujaat A**. Is there any association between PEEP and upper extremity DVT? Crit Care Research and Pract. Vol. 2015, Article ID 614598, 5 pages, 2015. doi:10.1155/2015/614598.

Bajwa AA, Shujaat A, Cury JD, Bhatti H, Qureshi T, **Jones LM, Seeram V**, Al-Saffar F. Predicting the need for combination therapy. J Cardiovasc Pharmacol Ther. 2015 Jul;20 (4):395-400.

Guirgis F, Williams DJ, Hale M, **Bajwa AA, Shujaat A**, Patel N, Kalynych CJ, Jones AE, Wears RL, Dodani S. The Relationship of IV Fluid Chloride Content to Kidney Function in Patients with Severe Sepsis/Shock. Accepted Pending publication. Am Journal of Emerg Med. 2015 Mar; 33(3):439-43.

Presentations

Deraniyagala R, Hoppe B, Morris CG, Pham D, D'Agostino H, **Bajwa AA**, Nichols R. Post-Operative Proton Therapy for Resected Non-Small Cell Lung Cancer. American Society for Radiation Oncology (ASTRO); San Antonio, TX, 2015.

Rutenberg MS, Nichols R, Flampoori S, **Bajwa AA**, Pham D, Siragusa D, Hoppe BS. Proton Radiation Therapy in Reirradiation for Recurrent NSCLC American Society for Radiation Oncology (ASTRO); San Antonio, TX, 2015.

Bajwa AA, Gupta E, **Louis M, Jones LM, Shujaat A, Cury JD, Seeram V**. NICOM predicted stroke volume correlated with changes in 6 MWD in PAH population. American Heart Association, 2015.

Gupta E, **Bajwa AA, Shujaat A**. Effect of Aspirin on prevention of venous thromboembolism in critically ill mechanically ventilated patients. American College of Chest Physician; Montreal, Canada, 2015.

Faisal M, **Bajwa AA, Shujaat**. A Effect of PAH specific therapy on pulmonary hemodynamics and 6 minute walk distance in chronic thromboembolic pulmonary hypertension: a meta-analysis. American College of Chest Physician; Montreal, Canada, 2015.

Bajwa AA, Patel M, Rahaghi F, Thomas C, Burger CD. The impact of inhaled treprostinil sodium inhalation on ventilation perfusion matching when used in patients with group 1 PAH with concomitant COPD. American College of Chest Physician; Montreal, Canada, 2015.

Bajwa AA, Hoppe B, Bellardini J. Effects of Proton Therapy on Pulmonary Function in Hodgkin Lymphoma Patients. American Thoracic Society; San Francisco, CA 2016.

Bajwa AA, Gupta E, **Seeram V**. Resting, Non-Invasive Cardiac Output Monitoring (NICOM®) predicts change in Six Minute Walk Test (6MWT) in Pulmonary Artery Hypertension patients. American Thoracic Society; San Francisco, CA 2016.

Flampouri S, Huh SN, **Bajwa AA**, Siragusa D, **Cury JD**, Li Z, Nichols RC. Image-Guided Hypofractionated Proton Therapy in the Management of Centrally Located Relapsed and Early Stage Medically Inoperable NSCLC. Particle Therapy Cooperative Group; Czech Republic, 2016.

Bajwa AA, Treger K. A Diagnostic Dilemma; Waxing and Waning Pulmonary Nodules Oral presentation. American Thoracic Society; San Francisco, CA, 2016.

HONORS AND AWARDS

CLINICAL ACTIVITIES

	AY 15/16
Inpatient activity	
Initial Inpatient Encounters	894
Outpatient activity	
Clinical Visits	4394
Procedures	
Bronchoscopies	630
Sleep Studies	1234

CONTRACTS AND GRANTS

Principal Investigator	Study Title	Dates	Sponsor	Award
Bajwa, A	Effects of combination of bosentan and sildenafil versus sildenafil monotherapy on morbidity and mortality in symptomatic patients with pulmonary arterial hypertension A multicenter, double-blind, randomized, placebo-controlled, parallel group, prospective, event driven Phase IV study (Compass 2).	9/17/09-9/17/15	Actelion	\$101,029.75
Bajwa, A	An open label extension Trial of UT-15C SR in Subjects with Pulmonary Arterial Hypertension. (UT-304).	12/2/09-12/1/15	United Therapeutics	\$24,573.75
Bajwa, A	AMBITION. A randomized controlled trial to evaluate first-line combination use with ambrisentan, and tadalafil, a PDE5 inhibitor, in patients with PAH.	10/5/10-10/5/16	Gilead	\$68,285.20
Bajwa, A	An open label study to evaluate impact of inhaled treprostinil Sodium on ventilation perfusion matching when used for treatment of pulmonary hypertension and concomitant chronic obstructive pulmonary disease (COPD). United Therapeutics Investigator Initiated Study Grant.	7/29/11-7/29/17	United Therapeutics Investigator initiated trial grant	\$278,055.00
Bajwa, A	A Post marketing Observational Study to Assess Respiratory Tract Adverse Events in Pulmonary Arterial Hypertension Patients Treated with Tyvaso® (treprostinil) Inhalation Solution (ASPIRE).	3/6/12-3/6/18	United Therapeutics	\$60,217.75
Bajwa, A	An Open-Label Extension Study of the Long-Term Safety of Pirfenidone in Patients with Idiopathic Pulmonary Fibrosis (IPF).	8/24/12-8/23/18	Intermune	\$21,313.80
Bajwa, A	SYMPHONY: A Study Of Macitentan In Pulmonary Arterial Hypertension To Validate The PAH-SYMPACT.	12/23/13-12/22/17	Actelion	\$24,178.00
Bajwa, A	BAY-63_2521: A Phase IV, Prospective, Single-Arm, Open-Label Study to Measure Outcomes in Patients with Pulmonary Arterial Hypertension Not on Active Treatment.	1/6/15-1/5/18	Bayer	\$30,925.86
Bajwa, A	A 16-Week, International, Multicenter, Double-Blind, Randomized, Placebo-Controlled Comparison of the Efficacy and Safety of Oral UT-15C Sustained Release Tablets in Subjects with Pulmonary Arterial Hypertension on background therapy.	10/10/13-10/9/16	United Therapeutics	\$57,436.25
Bajwa, A	A treatment protocol to allow patients in the US with IPF access to Pirfenidone.	7/8/14-7/7/17	Intermune	\$12,860.00
Bajwa, A	GS-US-322-0207 (RAINIER) A Phase 2 study for subjects with Idiopathic Pulmonary Fibrosis.	1/30/13-1/29/16	Gilead	\$174,071.60
Bajwa, A	A multicenter, doubled-blind, randomized, placebo-controlled, Phase 3 study to assess the efficacy and safety of oral BPS-314d-MR Added-on to treprostinil, inhaled (Tyvaso ®) in subjects with pulmonary arterial hypertension. (BEAT).	10/10/13-10/9/16	United Therapeutics	\$70,508.10
Bajwa, A	A Randomized, Double-Blind, Placebo-controlled, Prospective, Multi-Center, Parallel Group Study To Assess The Safety And Efficacy Of Macitentan In Patients With Porto-pulmonary HYPERTENSION	4/5/16-4/5/18	Actelion	Pending
Bajwa, A	Efficacy and Safety of SAR156597 in the Treatment of Idiopathic Pulmonary Fibrosis (IPF): A Randomized, Double-Blind, Placebo-Controlled, 52-week Dose Ranging Study (ESTAIR)	7/13/15-7/12/18	Sanofi	\$31,151.00
Bajwa, A	A Phase III, International, Multi-Center, Randomized, Double-Blind, Placebo-Controlled, Event Driven Study to Compare the Time to First Clinical Worsening in Subjects with Pulmonary Arterial Hypertension Receiving UT-15C in Combination with a PDE5-I or ERA Compared with a PDE5-I or ERA Alone.	10/16/15-10/15/18	United Therapeutics	Pending

Bajwa, A	Treatment of Pulmonary Hypertension Associated COPD with Inhaled Treprostinil-1. (Tapit-1)	6/1/15-6/30/16	United Therapeutics	Pending
Louis, M	A Double-Blind, Placebo-Controlled, Randomized-Withdrawal, Multicenter Study of the Efficacy and Safety of Xyrem with an Open-Label Pharmacokinetic Evaluation and Safety Extension in Pediatric Subjects with Narcolepsy with Cataplexy	3/26/15-3/25/18	Jazz Pharmaceutical	\$17,538.40
Shujaat, A	IKARIA Protocol IK-7001-PAH-201 – A Phase 2, Placebo Controlled, Double-Blind, Randomized, Clinical Study to Determine Safety, Tolerability And Efficacy of Pulsed, Inhaled Nitric Oxide (iNO) Versus Placebo As Add-On Therapy in Symptomatic Subjects With Pulmonary Arterial Hypertension (PAH)	10/11/11-10/10/15	IKARIA	\$4,620.00
Cury, J	A Clinical Outcomes Study to compare the effect of Fluticasone Furoate/Vilanterol Inhalation Powder 100/25mcg with placebo on Survival in Subjects with moderate Chronic Obstructive Pulmonary Disease (COPD) and a history of or at increased risk for cardiovascular disease	12/17/12-ongoing	Glaxo Smith Kline	\$74,527.50
Cury, J	A 26 week, randomized, double-blind, parallel-group, active controlled, multicenter, multinational safety study evaluating the risk of serious asthma-related events during treatment with Symbicort	8/12/13-8/11/16	Astra Zeneca	\$53,062.90
Cury, J	A phase III, 52 week, randomized, double-blind, 3-arm parallel group study, comparing the efficacy, safety and tolerability of the fixed dose triple combination FF/UMEC/VI with the fixed dose dual combinations of FF/VI and UMEC/VI, all administered once-daily in the morning via a dry powder inhaler in subjects with chronic obstructive pulmonary disease	12/2/14-12/1/17	Glaxo Smith Kline	\$36,796.40
Jones, L	Implementation of a protocol, for early identification and management of sepsis, severe sepsis/septic shock patients -An institution wide multidisciplinary collaborative.	10/1/12-10/1/15	UF Clinical Quality Award Grant	\$25,000.00

DIVISION OF RHEUMATOLOGY AND CLINICAL IMMUNOLOGY
ACADEMIC YEAR 2016 (7/15 - 6/16)

Highlights

The Division of Rheumatology and Clinical Immunology had a successful and productive academic year on multiple levels. Despite significant challenges, we have seen some of the fruits of our dedication to the University of Florida College of Medicine–Jacksonville (UFCOM-J) mission. We are grateful for the continued guidance of our leadership, including our chairman, Dr. Arshag Mooradian. The division had significant accomplishments in patient care, research and education.

The division continues to work with other training programs and the GME office at UFCOM-J in order to provide mentoring and teaching for many students and residents who are interested in our specialty. Our graduated fellows have now all certified in Musculoskeletal Ultrasound. We will plan to reapply for fellowship in the 2017 academic year. The division organized the seventh extremely successful annual CME musculoskeletal ultrasound sound training course. It was attended by national and international Rheumatologists as well as fellows in training.

The division continues to recruit more faculty members. However, the backbone to our success is the loyal and hardworking staff at our clinics, hospital and administrative offices.

Patient care: The division maintained its clinical volume and growth. Patients with numerous medical conditions including, but not limited to, many types of arthritis, lupus, scleroderma, myositis, autoimmune and systemic diseases, osteoporosis, connective tissue diseases related to inflammation and metabolic dysfunction, soft tissue conditions and pain such as fibromyalgia. We continue to be on the forefront of providing very up to date rheumatology services and 24/7 consultations at UF Health Jacksonville, the Ambulatory Care Clinic and our dedicated outpatient clinic on Emerson Street. The division also provides musculoskeletal ultrasound services related to rheumatologic care both for inpatient and outpatient settings.

In the outpatient setting, we provide full rheumatology coverage from Monday through Friday, where we provide diagnostic musculoskeletal ultrasound and musculoskeletal procedures under ultrasound guidance.

Excellence is our only goal when it comes to patient care. Our faculty members achieved or exceeded the average in our specialty and in comparison to others at our institution. We touch our patients' lives during some of the most vulnerable moments they will ever encounter alone or with their loved ones. As physicians of the UFCOM-J, we always strive for excellence in our practice.

Education: Education is one of the main missions at the UFCOM-J. Our faculty members have been very dedicated and creative in delivering the best of what they can offer to our students and residents. Our achievements in education were highlighted in multiple venues but the rheumatology fellowship program was a major cornerstone in the growth and development of our academic program.

The Rheumatology Fellowship started in July 2011. It has graduated three fellows. Dr. Laurie Ramrattan graduated in June 2015 and is practicing Rheumatology in Trinidad. The fellowship provided a strong clinical focus as well as many opportunities in clinical research, quality improvement as well as musculoskeletal ultrasound. The fellowship had accreditation until July 2015. The division will re-apply for fellowship in the 2017 academic year.

In the educational program of the University of Florida medical students and residents, Dr. Taba, Dr. Thway and Dr. Kaeley participated in precepting clinics in rheumatology and delivered core curriculum

lectures for the Internal Medicine Residency Program. Faculty members participated in internal medicine Grand Rounds and shared the knowledge as invited rheumatology speakers on a regular basis.

The seventh Musculoskeletal Ultrasound Course in February 2016 was a great success. This was a 3-day CME hands-on training course that uniquely utilized our state of the art simulation laboratory at the UFCOM-J. Dr. Kaeley organized the course and served as faculty, providing lectures and practical ultrasound instruction. Dr. Thway served as the course assistant, as well as anatomy prosector and instructor. The course was attended by rheumatology educators and fellows from 28 States, as well as from Canada and India. The attendees were very complimentary of the innovative cadaver-based curriculum held in the UFCOM-J CSESaR Simulation Center. The course was complimented by an elearning component. Faculty have also produced elearning material featured on national websites and are deeply involved in Musculoskeletal Ultrasound education nationally and internationally. Some of the international courses have utilized cutting edge models produced by the UFCOM-J simulation center. The division is grateful for the hard work of the simulation staff in making the courses such a success. The division has also been heavily involved in musculoskeletal ultrasound advocacy by assisting the American College of Rheumatology and Florida Society of Rheumatology in coordinating efforts to interact with Medicare representatives.

E-Learning is an entrepreneur unique project that was pioneered by Dr. Kaeley. The aim of this project is to develop electronic learning content to cover basic Rheumatology Core Curriculum, as well as musculoskeletal ultrasound training material. Internal Medicine residents need to assimilate core knowledge rapidly in order to gain the most out of the clinical Rheumatology rotations. This is now being developed as a blended learning project for the Rheumatology fellows as well as rotating residents. Starting in June 2013, a blended learning system was introduced under the leadership of Dr. Kaeley for the Rheumatology Fellowship utilizing Canvas as a learning management system.

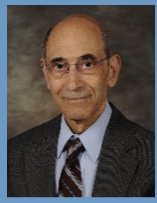
Research: The division has been growing its research enterprise. Although the division is active in numerous pharmaceutical trials, its emphasis is to develop investigator initiated trials as well as to seek grants. The division is collaborated with Center for Health Equity and Quality Research (CHEQR), as well as the UF Health Cardiology division. Projects so far have included studying cardiovascular health in Caucasian cocaine abusers, as well as correlating dysfunctional HDL with other imaging and cardiovascular biomarkers in South Asians. Dr. Kaeley was awarded the Dean's Grant for the study on cardiovascular markers in South Asians. The division is actively collaborating with the University of California, Los Angeles Division of Rheumatology in a bi-center prospective trial of Tocilizumab in Rheumatoid Arthritis, utilizing Power Doppler as a secondary outcome measure. The division has also been evaluating Medicare Expenditures for Musculoskeletal Ultrasound as well as drug utilization. Members of the division are closely involved with the Outcome in Clinical Rheumatology Trials (OMERACT) musculoskeletal ultrasound group and is leading the project at developing sonographic outcome tools in psoriatic arthritis and dactylitis.

LISTING OF FACULTY MEMBERS



Gurjit S Kaeley, M.B.B.S., Professor and Chief

Medical School/Graduation date	The London Hospital Medical College, London, UK	1990
Internship/residency and year	University of Tennessee College of Medicine	1996
Subspecialty training and year	University of Tennessee College of Medicine	1998

**Reza Taba, M.D., Assistant Professor**

Medical School/Graduation date	University of Isfahan	1970
Internship/residency and year	Medical College of Ohio	1976
Subspecialty training and year	University of Louisville School of Medicine	1978

**Myint Thway, M.D., Assistant Professor**

Medical School/Graduation date	Institute of Medicine, Yangon, Myanmar	2000
Internship/residency and year	Lutheran Medical Center, New York	2009
Subspecialty training and year	University of Miami, Miller School of Medicine	2014

PUBLICATIONS

Manuscripts:

Kaeley GS, Nishio MJ, Goyal JR, MacCarter DK, Wells AF, Chen S, Kupper H, Kalabic J. Changes in Ultrasonographic Vascularity Upon Initiation of Adalimumab Combination Therapy in Rheumatoid Arthritis Patients With an Inadequate Response to Methotrexate. *Arthritis Rheumatol*. 2016 May 23. doi: 10.1002/art.39751. [Epub ahead of print] PubMed PMID: 27214046.

Kaeley GS, Evangelisto AM, Nishio MJ, Goss SL, Liu S, Kalabic J, Kupper H. Methotrexate Dosage Reduction Upon Adalimumab Initiation: Clinical and Ultrasonographic Outcomes from the Randomized Noninferiority MUSICA Trial. *J Rheumatol*. 2016 Jun 15. pii: jrheum.151009. [Epub ahead of print] PubMed PMID:27307526.

Dodani S, Ruktanonchai CW, **Kaeley GS**, Vaddiparti K, Striley CW, Cottler LB. Chronic Diseases and Clinical Characteristics among Cocaine users Screened in the Community through HealthStreet. *Health Behav Policy Rev*. 2016 Jan; 3(1):54-61. Epub 2016 Jan 1

Terslev L, Gutierrez M, Christensen R, Balint PV, Bruyn GA, Delle Sedie A, Filippucci E, Garrido J, Hammer HB, Iagnocco A, Kane D, **Kaeley GS**, Keen H, Mandl P, Naredo E, Pineda C, Schicke B, Thiele R, D'Agostino MA, Schmidt WA; OMERACT US Gout Task Force. Assessing Elementary Lesions in Gout by Ultrasound: Results of an OMERACT Patient-based Agreement and Reliability Exercise. *J Rheumatol*. 2015 Oct 15. pii: jrheum.150366. [Epub ahead of print] PubMed PMID: 26472419.

Terslev L, Gutierrez M, Schmidt WA, Keen HI, Filippucci E, Kane D, Thiele R, **Kaeley GS**, Balint P, Mandl P, Delle Sedie A, Hammer HB, Christensen R, Möller I, Pineda C, Kissin E, Bruyn GA, Iagnocco A, Naredo E, D'Agostino MA; OMERACT Ultrasound Working Group. Ultrasound as an Outcome Measure in Gout. A Validation Process by the OMERACT Ultrasound Working Group. *J Rheumatol*. 2015 Sep 1. pii: jrheum.141294. [Epub ahead of print] PubMed PMID: 26329333.

Arora S, Dodani S, **Kaeley GS**, Kraemer DF, Aldridge P, et al. (2015) Cocaine Use and Subclinical Coronary Artery Disease in Caucasians. *J Clin Exp Cardiol* 6: 386. doi:10.4172/2155-9880.1000386

Book Chapters:

Kaeley GS, Sonography of the Shoulder. In Press: Book Chapter in *Musculoskeletal Ultrasound in Rheumatology Review*, 1st Edition. Editors: Minna Kohler. 2015

Kaeley GS, Sonography of Dactylitis and Psoriatic Arthritis. In Press: Book Chapter in *Essential Applications of Ultrasound in Rheumatology*, 2nd Edition. Editors: Richard Wakefield and Maria-Antonietta D'Agostino. 2015

Electronic Publication Monographs:

Kaeley GS, Evaluation of Seronegative Arthritis. BMJ Point-of-Care; www.pointofcare.bmj.com. (Revised August 2016; <https://online.epocrates.com/u/29111057/Evaluation+of+seronegative+arthritis>)

Kaeley GS, Cryoglobulinemia. BMJ Point-of-Care ; www.pointofcare.bmj.com. (Revised August 2016; <https://online.epocrates.com/u/2911870/Cryoglobulinemia>)

Web Based Electronic Learning Content:

2015 – Present: **Kaeley GS**, Sonography of Psoriatic Arthritis. (Module for Ultrasound School for North American Rheumatologists): <https://vimeo.com/user19386467/review/145809370/90b8109dc7>

2013 – Present: **Kaeley GS**, Musculoskeletal Ultrasound CME Pre-Course Module. (CME provided by Suwanee Area Health Education Centers (AHEC))

Abstracts Presented:

Kaeley GS, Thway M, Dodani S. Utilization of Viscosupplementation: 2011 – 2013 Poster Presentation at Education Day, University of Florida College of Medicine-Jacksonville, May 2016.

Kaeley GS, Kraemer D, Smotherman C, Dodani S. Musculoskeletal Ultrasound (MSK-US): Innovation or Overutilization? [abstract]. Arthritis Rheumatol. 2015; 67 (suppl 10). Oral Abstract Presentation at the American College of Rheumatology Annual Meeting, San Francisco, CA. November 2015.

Kaeley GS, Thway M, Dodani S. Utilization of Viscosupplementation: 2011 – 2013 [abstract]. Arthritis Rheumatol. 2015; 67 (suppl 10). Poster Presentation at the American College of Rheumatology Annual Meeting, San Francisco, CA. November 2015.

Ranganath VK, Suliman Y, Brook J, Elashoff D, Ben-Artzi A, Olmos C, Borazan N, Woodworth T, **Kaeley GS**. Musculoskeletal Ultrasound in Multi-Center Rheumatoid Arthritis Clinical Trials: Methodology for Optimizing Reliability of Acquisition and Real-Time Scoring [abstract]. Arthritis Rheumatol. 2015; 67 (suppl 10). Poster Presentation at the American College of Rheumatology Annual Meeting, San Francisco, CA. November 2015.

Burmester G, **Kaeley GS**, Kavanaugh A, Gabay C, MacCarter D, Nash P, Takeuchi T, Cardoso A, Liu S, Kupper H, Kalabic J. The Relationship between Efficacy and Toxicity in Patients with Rheumatoid Arthritis Receiving Methotrexate in Combination with Adalimumab [abstract]. Arthritis Rheumatol. 2015; 67 (suppl 10). Poster Presentation at the American College of Rheumatology Annual Meeting, San Francisco, CA. November 2015.

Torralba KMD, Cannella AC, Kissin EY, Bolster MB, Higgs JB, Samuels J, Nishio MJ, **Kaeley GS**, Evangelisto AM, DeMarco PJ, Kohler MJ. Musculoskeletal Ultrasound Education among Rheumatology Fellowship Programs in the United States [abstract]. Arthritis Rheumatol. 2015; 67 (suppl 10). Poster Presentation at the American College of Rheumatology Annual Meeting, San Francisco, CA. November 2015.

Dodani S, **Kaeley GS**, Arora S, Klessen C, Ozdemir S, Kraemer D. Metabolic Syndrome and Sub-Clinical Coronary Artery Disease in South Asian Immigrants. How much do we know? Oral Presentation. Indo American Annual Meeting. Hammock Beach. September 2015.

Activities and Presentations:

Kaeley GS, Rheumatology Perspectives through the Sonographic Looking Glass. Rheumatology Review for Primary Care. Amelia Island, FL. May 2016

Kaeley GS, The use of ultrasound in Rheumatology. Canadian Rheumatology Ultrasound Course, King Saud College of Medicine, Riyadh, Saudi Arabia. April 2016.

Kaeley GS, Neurosonography of the hand and wrist. Canadian Rheumatology Ultrasound Course, King Saud College of Medicine, Riyadh, Saudi Arabia. April 2016.

- Kaeley GS**, Doppler Technique and Doppler Scoring. Canadian Rheumatology Ultrasound Course, King Saud College of Medicine, Riyadh, Saudi Arabia. April 2016.
- Kaeley GS**, Pathology of the hand and wrist. Canadian Rheumatology Ultrasound Course, King Saud College of Medicine, Riyadh, Saudi Arabia. April 2016.
- Kaeley GS**, Upper and Lower Extremity Anatomy Demonstrator. Canadian Rheumatology Ultrasound Course, King Saud College of Medicine, Riyadh, Saudi Arabia. April 2016.
- Kaeley GS**, Faculty for hands on instruction in workshops. Canadian Rheumatology Ultrasound Course, King Saud College of Medicine, Riyadh, Saudi Arabia. April 2016.
- Kaeley GS**, Ultrasound in Seronegative Spondyloarthritis – Joints, Tendons and Enthesia. Imaging of Frequently Under Recognized Seronegative Spondyloarthritis. Orlando. March 2016.
- Kaeley GS**, Case presentation and discussion. Imaging of Frequently Under Recognized Seronegative Spondyloarthritis. Orlando. March 2016.
- Kaeley GS**, Overview: Role of MSK Ultrasound in Diagnosis and Management of Rheumatic and MSK Disorders for Rheumatologists. Musculoskeletal Ultrasound Course and Interventional Cadaver Workshop for Rheumatologists, Jacksonville, FL. Feb 2016.
- Kaeley GS**, Ultrasonography of Rheumatoid Arthritis and Spondyloarthritis. Musculoskeletal Ultrasound Course and Interventional Cadaver Workshop for Rheumatologists, Jacksonville, FL. Feb 2016.
- Kaeley GS**, Principles of Ultrasound Interventional Procedures and Sonographically Guided Upper Extremity Procedures. Musculoskeletal Ultrasound Course and Interventional Cadaver Workshop for Rheumatologists, Jacksonville, FL. Feb 2016.
- Kaeley GS**, Principles of Ultrasound Interventional Procedures and Sonographically Guided Lower Extremity Procedures. Musculoskeletal Ultrasound Course and Interventional Cadaver Workshop for Rheumatologists, Jacksonville, FL. Feb 2016.
- Kaeley GS**, Faculty for hands on instruction in workshops and cadaveric injection guidance sessions - Musculoskeletal Ultrasound Course and Interventional Cadaver Workshop for Rheumatologists, Jacksonville, FL. Feb 2016.
- Kaeley GS**, Ultrasonography of Crystalline Arthropathies. Canadian Rheumatology Ultrasonography Society Intermediate Musculoskeletal Ultrasound Course, Lake Louise, Alberta, Canada. Feb 2016.
- Kaeley GS**, Sonography of Psoriatic Arthritis. Canadian Rheumatology Ultrasonography Society Intermediate Musculoskeletal Ultrasound Course, Lake Louise, Alberta, Canada. Feb 2016.
- Kaeley GS**, Faculty for hands on instruction in workshops – Canadian Rheumatology Ultrasonography Society Intermediate Musculoskeletal Ultrasound Course, Lake Louise, Alberta, Canada. Feb 2016.
- Kaeley GS**, Sonography of the shoulder. American College of Rheumatology Musculoskeletal Ultrasound Course for Rheumatologists, San Francisco, CA. Nov 2015. Live Demonstration: Scanning of the Shoulder
- Kaeley GS**, Live Demonstration: Scanning of the Shoulder American College of Rheumatology Musculoskeletal Ultrasound Course for Rheumatologists, San Francisco, CA. Nov 2015.
- Kaeley GS**, Invited faculty for hands on instruction - American College of Rheumatology Musculoskeletal Ultrasound Course for Rheumatologists, San Francisco, CA. Nov 2015.
- Kaeley GS**, Faculty and Instructor American College of Rheumatology Ultrasound Guidance Course Utilizing Hand Injection Models. San Francisco, CA. Nov 2015.
- Kaeley GS**, Faculty and Instructor Musculoskeletal Ultrasound Workshop at American College of Rheumatology Ultrasound Course, San Francisco, CA. Nov 2015.

Kaeley GS, Sonography for Rheumatoid Arthritis: What is unknown / should be known. Imaging Excellence Meeting. Munich, Germany. October 2015.

Kaeley GS, Sonography of the Shoulder: Inflammatory Arthritis. Asia Pacific League against Rheumatism Intermediate Musculoskeletal Ultrasound Workshop. Chennai, India. Sept 2015.

Kaeley GS, Sonography of the Hand and Wrist. Overview of standard scans, sonopathology of dorsal compartments, synovial recesses and carpal tunnel. Asia Pacific League against Rheumatism Intermediate Musculoskeletal Ultrasound Workshop. Chennai, India. Sept 2015.

Kaeley GS, Overview and Elbow Sonopathology. Asia Pacific League against Rheumatism Intermediate Musculoskeletal Ultrasound Workshop. Chennai, India. Sept 2015.

Kaeley GS, Role of Sonography in Inflammatory and Crystalline arthropathies. Asia Pacific League against Rheumatism Intermediate Musculoskeletal Ultrasound Workshop. Chennai, India. Sept 2015.

Kaeley GS, Overview and Sonopathology of the Foot and Ankle. Asia Pacific League against Rheumatism Intermediate Musculoskeletal Ultrasound Workshop. Chennai, India. Sept 2015.

Kaeley GS, Musculoskeletal Ultrasound Interventional Procedures. Asia Pacific League against Rheumatism Intermediate Musculoskeletal Ultrasound Workshop. Chennai, India. Sept 2015.

Kaeley GS, Faculty for hands on instruction in workshops. Asia Pacific League against Rheumatism Intermediate Musculoskeletal Ultrasound Workshop. Chennai, India. Sept 2015.

Kaeley GS, Sonography of the foot and ankle: anatomy and pathology. Practical Demonstration. Clinical Applications of Musculoskeletal Ultrasound Conference, Ohio State University, Columbus, Ohio. August 2015.

Kaeley GS, Invited faculty for hands on instruction and cadaver injection guidance instruction. Clinical Applications of Musculoskeletal Ultrasound Conference, Ohio State University, Columbus, Ohio. August 2015.

Kaeley GS, Sonography of the wrist and hand: Rheumatology Perspective. Florida Society of Rheumatology Lower Extremity Ultrasound Course. Orlando, FL. July 2015.

Kaeley GS, Sonography of the shoulder: Rheumatology Perspective. Florida Society of Rheumatology Lower Extremity Ultrasound Course. Orlando, FL. July 2015.

Kaeley GS, Sonography of the elbow: Rheumatology Perspective. Florida Society of Rheumatology Lower Extremity Ultrasound Course. Orlando, FL. July 2015.

CLINICAL ACTIVITIES

	FY 15/16
Inpatient Activity	
Initial Inpatient Encounters	141
Outpatient Activity	
Clinic Visits	4855
US, extremity, nonvascular	484

CONTRACTS AND GRANTS

Principal Investigator	Study Title	Project Period	Sponsor	Award Amount
Kaeley, G.	M13-550: A Randomized, Double-Blind, Placebo-Controlled, Phase 2 Study to Investigate the Safety and Efficacy of ABT-494 Given with Methotrexate (MTX) in Subjects with Moderately to Severely Active Rheumatoid Arthritis (RA) Who Have Had an Inadequate Response or Intolerance to Anti-TNF Biologic Therapy	6/19/14 – Present	Abbvie	\$387,022.40
Kaeley, G.	Unrestricted equipment loan from Biosound Esaote. Objectives are to; (a) Review the feasibility of 3D and 4D Musculoskeletal Ultrasound; (b) Review the utilization of very high frequency linear ultrasound probes to examine finger enthuses; and (c) Examine the reliability and feasibility of radiofrequency acquisition of carotid intima thickening and carotid stiffness in rheumatic patients. Mentor: Sunita Dodani MD, MSc, PhD	2009 – Present	Biosound Esaote	N/A
Kaeley, G.	Musculoskeletal Ultrasound in Predicting Early Dose Titration with Tocilizumab. Collaborative investigator initiated study with University of California, Los Angeles. Objective: To determine if ultrasound Power Doppler synovitis scores at 4 weeks can provide early evidence to predict changes in disease activity at 12 weeks follow up in RA patients treated with 4mg/kg of TCZ.	09/04/14 - Present	UCLA	\$347,255.00
Kaeley, G.	M13-375: A Multicenter, Randomized, Double-Blind, Study Comparing the Efficacy and Safety of Continuing Versus Withdrawing Adalimumab Therapy in Maintaining Remission in Subjects with Non-Radiographic Axial Spondyloarthritis	01/24/14 -Present	Abbvie	\$540,717.50
Kaeley, G. Ramrattan, L. (Fellow) Co-PI	Significance of Extensor Tendon Abnormalities in Rheumatoid Arthritis using Ultrasound. (Fellow Project)	2014- 2015	UF COM, Jacksonville	Dean's Grant
Kaeley, G.	A3921133: Phase 3B/4 Randomized Safety Endpoint Study Of 2 Doses Of Tofacitinib In Comparison To A Tumor Necrosis Factor (TNF) Inhibitor In Subjects With Rheumatoid Arthritis	7/5/14- Present	Pfizer	\$172,900.62
Kaeley, G.	FKB327-002: A Randomised, Blinded, Active-Controlled Study to Compare FKB327 Efficacy and Safety with the Comparator Humira® in Rheumatoid Arthritis Patients Inadequately Controlled on Methotrexate (ARABESC)	02/19/15 - Present	Fujifilm Kyowa Kirin Biologics Co., Ltd.	\$119,367.18
Kaeley, G. Thway, M. Co-PI	M13-538: Phase 2 Study, Multicenter, Open-Label Extension (OLE) Study in Rheumatoid Arthritis Subjects Who Have Completed a Preceding Phase 2 Randomized Controlled Trial (RCT) with ABT-494	10/22/14 - Present	Abbvie	\$676,642.56
Kaeley, G. Thway, M. Co-PI	FKB327-002: A Randomised, Blinded, Active-Controlled Study to Compare FKB327 Efficacy and Safety with the Comparator Humira® in Rheumatoid Arthritis Patients Inadequately Controlled on Methotrexate (ARABESC)	02/19/15 - Present	Fujifilm Kyowa Kirin Biologics Co., Ltd.	\$14,885.70
Kaeley, G. Thway, M. Co-PI	A3921133: Phase 3B/4 Randomized Safety Endpoint Study Of 2 Doses Of Tofacitinib In Comparison To A Tumor Necrosis Factor (TNF) Inhibitor In Subjects With Rheumatoid Arthritis	7/5/14- Present	Pfizer	\$8,724.73
Kaeley, G.	Defining Sonographic Elements of Dactylitis	06/20/13 – Present	UF COM, Jacksonville	Unfunded
Kaeley, G. Dodani, S. Co-PI	Rheumatology Medicare Provider Payments	05/26/15 - Present	UF COM, Jacksonville	Unfunded
Kaeley, G. Thway, M. Co-PI Dodani, S. Co-PI	Utilization of Office Administered Drugs Amongst Medicare Beneficiaries	06/04/15 - Present	UF COM, Jacksonville	Unfunded
Kaeley, G. Thway, M. Co-PI	ML28542 Musculoskeletal Ultrasound in Predicting Early Dose Titration with Tocilizumab	09/04/14 -Present	UCLA	\$347,255.00



Notes



**DEPARTMENT OF MEDICINE
ANNUAL FACULTY MEETING
JUNE 2016**