

# ANNUAL REPORT

DEPARTMENT OF MEDICINE



2018-  
2019

**UF** UNIVERSITY of  
**FLORIDA**  
College of Medicine  
*Jacksonville*



**TABLE OF CONTENTS**  
**ACADEMIC YEAR 2019 (7/18 – 6/19)**

- I. Statement from the Chair**
- II. Department Organizational Overview**
  - a. Department Leadership
  - b. Division Chiefs
  - c. Educational Leadership
  - d. Residents/Fellows
- III. Graduate Medical Education**
  - a. Internal Medicine Residency Training Program
  - b. Subspecialty Fellowship Programs
  - c. Student Education Programs
- IV. Department Research**
- V. Individual Divisions**
  - a. Cardiology
  - b. Endocrinology, Diabetes and Metabolism
  - c. Gastroenterology
  - d. General Internal Medicine
  - e. Hematology and Medical Oncology
  - f. Infectious Diseases
  - g. Nephrology and Hypertension
  - h. Pulmonary, Critical Care and Sleep Medicine
  - i. Rheumatology and Clinical Immunology

**Department of Medicine**  
**University of Florida**  
**College of Medicine—Jacksonville**  
**653-1 West 8<sup>th</sup> Street, L20**  
**Jacksonville FL 32209**  
**904-244-8846**  
**[www.hscj.ufl.edu/medicine/](http://www.hscj.ufl.edu/medicine/)**

**STATEMENT FROM THE CHAIR**  
**ACADEMIC YEAR 2019 (7/18 - 6/19)**

Dear Colleagues and Friends:

I am pleased to share with you the Annual Report of the Department of Medicine at the University of Florida-College of Medicine - Jacksonville for the academic year July 2018 through June 2019. I will briefly describe the departmental accomplishments in our tripartite mission of excellence in patient care, education and research.

**Patient care:** The Department had once again an exceptionally productive year. Clinical volumes in all disciplines were strong. The clinical excellence of the faculty was coupled with continued improvements in clinical operations and improvements in patient satisfaction scores.

**Education:** The Department continues to excel in its mission of educating students and residents. There were unprecedented 22 faculty members in the Department who received the Exemplary Teacher Award. In addition, several faculty members and trainees in the Department of Medicine received key education awards. Continuing Medical Education (CME) initiatives were offered by all the Divisions within the Department, including a highly successful Internal Medicine Review symposium, annual Heart Health in Women symposium, annual Nephrology symposium and the nationally recognized musculoskeletal ultrasound course.

**Research:** The Department had a productive year in research. There was a total of 144 peer reviewed publications, 18 monographs and book chapters and 16 web based learning materials. Faculty made 99 national and regional presentations. During the academic year 2019, we had 91 research awards and the research funding increased to \$4,775,695.

Overall, the Department excelled in every aspect of the academic mission. I am proud and humbled to have the privilege of serving as the Chair of such an exceptionally productive Department.

Sincerely,

Arshag D. Mooradian, M.D.  
Professor and Chair

**DEPARTMENT ORGANIZATIONAL OVERVIEW**  
**ACADEMIC YEAR 2019 (7/18 - 6/19)**

**Arshag D. Mooradian, M.D.**

Chair, Department of Medicine

**Linda R. Edwards, M.D.**

Associate Chair, Department of Medicine

**James Scolapio, M.D.**

Associate Chair, Department of Medicine

**Jeffrey House, D.O.**

Associate Chair, Department of Medicine

**Michael Haas, Ph.D.**

Director of Research

**Ronald Stone, M.B.A., R.D.**

Director

**DIVISION CHIEFS**

**Cardiology**

Theodore Bass, M.D.

**Endocrinology, Diabetes and Metabolism**

Kent R. Wehmeier, M.D.

**Gastroenterology**

Peter Ghali, M.D.

**General Internal Medicine**

Linda R. Edwards, M.D.

**Hematology and Medical Oncology**

Fauzia Rana, M.D.

**Infectious Disease**

Michael Sands, M.D., M.P.H. &amp; T.M.

**Nephrology and Hypertension**

Charles Heilig, M.D.

**Pulmonary, Critical Care and Sleep Medicine**

Lisa Jones, M.D.

**Rheumatology and Clinical Immunology**

Gurjit Kaeley, M.D.

**EDUCATIONAL LEADERSHIP**

**Jeffrey House, D.O.** Program Director, Internal Medicine Residency**Carlos Palacio, M.D., M.P.H.** Associate Program Director, Internal Medicine Residency**Elisa Sottile, M.D.** Associate Program Director, Internal Medicine Residency and Director, Medical Student Clerkship

**RESIDENTS/FELLOWS****Chief Residents**

Bashar Al-Turk, DO  
Julio Perez-Downes, DO

**Housestaff I**

Barrett Attarha, DO  
Lauren Boshnick, MD  
Michael Chahin, DO  
Madeline Fasen, DO  
Christopher Izzo, DO  
William Kogler, DO  
Nithya Krishnan, MD  
Yessina Marquez, MD  
Andres Martinez, DO  
Ahsan Niazi, MD  
Michael Omar, MD  
Monique Oye, DO  
Bijal Patel, DO  
Kevin Rechcigl, DO  
Yulia Salamatova, DO  
Kimberly Sanders, MD  
William Scharpf, DO  
Sandra Sheffield, DO  
Anthony Stack II, DO  
Ambreona Thomas, DO

**Housestaff II**

Belinda Bajric, DO  
Michael Carranza, DO  
Nancy Davison, DO  
Sonal Jadeja, DO, MS  
Joshua Lung, DO  
Maria Del Mar Morales Hernandez, MD  
Catarina Nolan Ruas Rego Canha, MD  
Hamel Patel, DO  
Rhumit Patel, DO  
Jose Rivas Rios, MD  
Patrisha Shelley, DO  
Jorge Verdecia, MD  
Firas Warda, MD  
Unnati Wardan, DO

**Housestaff III**

Rami Bahloul, MD, MS  
Cherisse Baldeo, MD  
Zachary Burden, MD  
Jeremy Carlson, MD  
Kevin Green, MD  
Jarelys Hernandez Jimenez, MD  
Cody Horn, DO  
Satish Maharaj, MD  
Anna McCarthy, MD, MPH  
Jose Ruiz Morales, MD  
Karan Seegobin, MD  
Ivan Serrano Santiago, MD  
Peter Staiano, DO  
Ashley Thomas, MD

**Medical School**

Lake Erie College of Osteopathic Medicine, Bradenton  
Lake Erie College of Osteopathic Medicine, Bradenton

**Medical School**

Philadelphia College of Osteopathic Medicine  
American University of the Caribbean School of Medicine  
Edward Via College of Osteopathic Medicine, Carolinas Campus  
Nova Southeastern University College of Osteopathic Medicine  
Lake Erie College of Osteopathic Medicine, Bradenton  
Lincoln Memorial University DeBusk College of Osteopathic Medicine  
American University of the Caribbean School of Medicine  
FIU Herbert Wertheim College of Medicine  
Nova Southeastern University College of Osteopathic Medicine  
Texas Tech University Health Sciences Center School of Medicine  
University of the West Indies Faculty of Medicine, Trinidad & Tobago  
West Virginia School of Osteopathic Medicine  
Philadelphia College of Osteopathic Medicine  
Nova Southeastern University College of Osteopathic Medicine  
Lake Erie College of Osteopathic Medicine, Bradenton  
St. George's University School of Medicine  
Campbell University School of Osteopathic Medicine  
Philadelphia College of Osteopathic Medicine  
Lake Erie College of Osteopathic Medicine, Bradenton  
Edward Via College of Osteopathic Medicine, Carolinas Campus

**Medical School**

Lake Erie College of Osteopathic Medicine, Bradenton  
Nova Southeastern University College of Osteopathic Medicine  
Lake Erie College of Osteopathic Medicine, Bradenton  
Lake Erie College of Osteopathic Medicine, Bradenton  
Lake Erie College of Osteopathic Medicine, Bradenton  
Ponce School of Medicine and Health Sciences  
Universitat de Barcelona Facultat de Medicina  
Lake Erie College of Osteopathic Medicine, Bradenton  
Lake Erie College of Osteopathic Medicine, Bradenton  
Universidad del Zulia Facultad de Medicina  
Edward Via College of Osteopathic Medicine, Virginia Campus  
Ross University School of Medicine  
St. George's University School of Medicine  
Des Moines University College of Osteopathic Medicine

**Medical School**

Saba University School of Medicine  
Royal College of Surgeons in Ireland School of Medicine  
USF Health Morsani College of Medicine  
Ross University School of Medicine  
Ross University School of Medicine  
San Juan Bautista Escuela de Medicina  
Ohio University Heritage College of Osteopathic Medicine  
University of the West Indies Faculty of Medicine, Trinidad & Tobago  
St. George's University School of Medicine  
Universidad Central del Caribe School of Medicine  
University of the West Indies Faculty of Medicine, Trinidad & Tobago  
Universidad Central del Caribe School of Medicine  
Edward Via College of Osteopathic Medicine, Virginia Campus  
St. George's University School of Medicine

**Subspecialty Fellowship Programs**

Clinical Cardiac Electrophysiology (CCEP)  
 Cardiology  
 Endocrinology  
 Gastroenterology  
 Interventional Cardiology  
 Infectious Disease  
 Medical Oncology  
 Nephrology  
 Pulmonary Critical Care

**Subspecialty Fellow – Housestaff IV**

Malhar Agarwal, MD – Cardiology  
 Kyeesha Becoats, MD - Cardiology  
 Prabhjot Bhinder, MD – Medical Oncology  
 Sebastian Carrasquillo, MD - Cardiology  
 Hardik Chhatrala, MD, MPH – Medical Oncology  
 Shreya Ghetiya, MD - Cardiology  
 Ciel Harris, MD - Gastroenterology  
 Jaspreet Kaler, MD - Rheumatology  
 Poonam Kalidas, MD - Endocrinology  
 Trevanne Matthews-Hew, MD – Medical Oncology  
 Shrina Parekh, MD - Endocrinology  
 Pujan Patel, MD - Cardiology  
 Jose Reyes Oliva, MD - Nephrology  
 Aaron Richardson, DO - Cardiology  
 Stuart Shah, MD - Pulmonary Critical Care  
 Mladen Sokanovic, MD – Infectious Disease  
 Scott Steinberg, MD - Pulmonary Critical Care  
 Lauren Stemboroski, DO - Gastroenterology

**Subspecialty Fellow – Housestaff V**

Steve Antoine, MD - Cardiology  
 Prabhjot Bhinder, MD – Medical Oncology  
 Priyanka Bikkina, MD - Endocrinology  
 Allen Brown, MD - Cardiology  
 W. Russ Cullinane, DO – Pulmonary Critical Care  
 Khadeeja Esmail, MD - Cardiology  
 Kerolos Fahmi, MD - Cardiology  
 Maedeh Ganji, MD, MBA - Cardiology  
 Marie Angelica Landicho, MD - Endocrinology  
 Valery Muenyi, MD - Gastroenterology  
 Ammar Nassri, MD - Gastroenterology  
 W. Taylor Palfrey Jr, MD - Pulmonary Critical Care  
 Virin Ramoutar, MD – Nephrology  
 Sarah Suliman, MD – Nephrology  
 Chinelo Udemgba, MD - Cardiology

**Subspecialty Fellow – Housestaff VI**

Tracy Ashby, DO - Pulmonary Critical Care  
 Edilberto Benitez, MD - Cardiology  
 Andre Fialho, MD - Gastroenterology  
 Andrea Fialho, MD - Gastroenterology  
 Priscilla Givens, MD - Cardiology  
 Sanjay Lulla, DO - Cardiology  
 Nimeh Najjar, MD - Pulmonary Critical Care  
 Wesam Ostwani, MD - Cardiology  
 Jainil Shah, MD - Cardiology  
 Dmitry Yaranov, MD – Cardiology

**Subspecialty Fellow – Housestaff VII**

Emilio Garcia, MD – Int. Cardiology  
 Joshua Levine, MD - CCEP  
 Adam Rafi, MD – Int. Cardiology  
 Kun Xiang, MD - CCEP

**Program Director**

Steven Hsu, MD  
 Gladys Velarde, MD  
 Kent Wehmeier, MD  
 Peter Ghali, MD  
 Dominick Angiolillo, MD  
 Michael Sands, MD  
 Dat Pham, MD  
 Charles Heilig, MD  
 J. Davis Cury, MD

**Medical School**

Christian Medical College, Ludhiana  
 Stony Brook University Health Sciences Center School of Medicine  
 Kilpauk Medical College  
 Universidad Central del Caribe School of Medicine  
 Pramukhswami Medical College  
 Pandit Deendayal Upadhyay Medical College, Rajkot  
 University of the West Indies, Barbados Faculty of Medical Sciences  
 American University of Antigua College of Medicine  
 USF Health Morsani College of Medicine  
 University of the West Indies Faculty of Medical Sciences, Jamaica  
 Windsor University School of Medicine  
 Medical University of Lublin  
 Facultad de Ciencias Medicas de Granma Celia Sanchez Manduley  
 Edward Via College of Osteopathic Medicine, Virginia Campus  
 Ross University School of Medicine  
 University of Novi Sad Faculty of Medicine  
 Ross University School of Medicine  
 Lake Erie College of Osteopathic Medicine, Bradenton

**Medical School**

American University of the Caribbean School of Medicine  
 Kilpauk Medical College  
 American University of Antigua College of Medicine  
 University of Tennessee Health Science Center College of Medicine  
 William Carey University College of Osteopathic Medicine  
 Ross University School of Medicine  
 USF Health Morsani College of Medicine  
 St. Matthew's University School of Medicine  
 University of Santo Tomas Faculty of Medicine and Surgery  
 Meharry Medical College School of Medicine  
 Royal College of Surgeons in Ireland - Medical University of Bahrain  
 Ross University School of Medicine  
 University of the West Indies School of Medicine, Trinidad & Tobago  
 University of Khartoum Faculty of Medicine  
 University of Mississippi School of Medicine

**Medical School**

Debusk College of Osteopathic Medicine  
 FIU Herbert Wertheim College of Medicine  
 Universidade Federal do Ceará (UFC) Faculdade de Medicina  
 Universidade Federal do Ceará (UFC) Faculdade de Medicina  
 USF Health Morsani College of Medicine  
 University of N Texas HSC, Texas College of Osteopathic Medicine  
 Ross University School of Medicine  
 University of Damascus Faculty of Medicine  
 Pramukhswami Medical College  
 Samara State Medical University

**Medical School**

University of Texas Medical Branch School of Medicine  
 University at Buffalo School of Medicine and Biomedical Sciences  
 USF Health Morsani College of Medicine  
 Southern Medical University



**GRADUATE MEDICAL EDUCATION**  
**ACADEMIC YEAR 2019 (7/18 - 6/19)****Highlights**

It was another successful year for all of the Graduate Medical Education programs for the Department of Medicine. All of the programs enjoyed success in several areas, including scholarship, board pass rate, quality improvement, and fellowship match. A new program began this year in Rheumatology, and it has the makings of a very successful future. The fellowships continue to produce high quality physicians who have now gone out to serve communities abroad. In fact, with the most recent graduating class, the pulmonary/critical care program now has a graduate practice in every major hospital in the Jacksonville area. The core residency program continues to graduate clinicians who serve our local community or move on to fellowship education.

This past year, the core program and fellowships began the Self-Study process for reaccreditation for the ACGME. The foundation for this process is to develop aims, or key expectations for the program. This may include aspects of the program that differentiate from other programs. The programs are also responsible for conducting a strategic assessment of the program, focusing on strengths, opportunities, areas for improvement, and threats. The aims for the internal medicine residency are listed below:

- Produce competent, independent practicing internists, who have the ability to comprehensively care for patients in both inpatient and outpatient settings
- Prepare competitive resident applicants for fellowship, who have the opportunity to pursue other interests beyond internal medicine. This may include scholarship, education, advocacy, or leadership
- Train practitioners to have a basic understanding of quality improvement and patient safety
- Produce residents who will serve the local community through their practice of primary care, hospital medicine, and medical subspecialties. These practitioners should have expertise in treating the variety of patient populations in our community, with a particular understanding for the medically underserved.
- Develop well-adjusted residents through a programmatic focus on physician well-being. The intent being that emotionally healthy physicians will be more resilient and able to deliver the best care to our community.

The residency graduating class of 2019 was diverse in their destinations following graduation. Eight of our graduates sought fellowship training in the subspecialties of cardiology, pulmonary/critical care, hematology oncology, vascular medicine, infectious diseases, endocrinology, and nephrology. While some graduates pursued fellowships at other institutions, three residents are staying in Jacksonville for fellowship. Others have pursued hospital medicine in the Southeast.

The class of 2018 was very successful on the American Board of Internal Medicine examination achieving a 93% pass rate. This brings the ABIM three year rolling average to 90%, in line with the national average. The program continues to provide trainees with a plethora of board preparation materials in addition to high quality clinical training; we expect the entire class of 2019 to pass the exam.

The leadership within the residency program remained stable for the past academic year. Drs. Bashar Al-Turk and Julio Perez-Downes continued the tradition of strong Chief Resident teaching and leadership. They continued to build on the strong foundation from their predecessors that included the continuation of Research Club. The Research Club is a forum for trainees to present new ideas and proposed projects in front of seasoned faculty, research professionals, and fellow trainees to solicit advice and feedback before embarking on a new research endeavor.



As in years past, the Department of Medicine had a plethora of faculty receiving Exemplary Teacher Awards. A remarkable 22 faculty were recipients this year and are listed in the Honors and Awards section below along with the resident teaching award recipient, Dr. Ashley Thomas. Dr. Win Aung was one of the faculty finalists for the College of Medicine Excellence in Student Education Award and Dr. Jose Ruiz was one of the resident finalists. Dr. Zachary Burden was a finalist for the Edward Jelks Outstanding Resident Clinician Award. Dr. Srinivasan Sattiraju was a finalist for the Louis S. Russo Award for Outstanding Professionalism in Medicine. A comprehensive list of award recipients is included in the Honors and Awards section.

There were many regional conference presentations by the residents that included the Florida Chapter of the American College of Physicians Meetings (both spring and fall), American Federation for Medical Research Southern Region, and Southern Hospital Medicine. Residents even presented at prestigious national conferences that include American College of Cardiology, American Thyroid Association, Digestive Disease Week, American Thoracic Society, Society of General Internal Medicine, and the American College of Gastroenterology annual meetings. Residents continue to produce a high volume of scholarly activity that included presentations, publications, abstracts, grants, and textbook chapters.

The internal medicine residency continues to make curricular changes to meet the new ever changing landscape of Graduate Medical Education. The Quality Improvement/Patient Safety Rotation emphasized inpatient metrics this past year. Projects focused on handoffs, cost conscious medicine, and physician communication. Several of these projects resulted in presentations and publications. Education in diagnostic and procedural ultrasound has become increasingly important for internal medicine residency. The program began training in Point of Care Ultrasound (POCUS). Dr. Palacio expanded the ambulatory curriculum by adding a dedicated rotation in dermatology during which the residents work with UF Gainesville faculty in their Jacksonville clinic. Additionally, Dr. Palacio further developed the care of underserved experience by creating a month long curriculum at the IM Sulzbacher Clinic in Downtown Jacksonville. The program continues to address the health and wellbeing of our trainees. The program organized several extracurricular activities such as class retreats, a golf outing, and a dog show to foster trainee well-being and group cohesiveness.

The medical student experience in the Department of Medicine has benefited from many years of strong leadership from Dr. Carlos Palacio. However, the clerkship experience has assumed new direction, as Dr. Elisa Sottile has now assumed the role of Clerkship Director. Dr. Sottile worked to maintain the excellent educational program that Dr. Palacio developed. The campus continues to attract visiting medical students from other institutions. The clerkship notably continued to grow in terms of the number of students coming from other medical schools to do elective rotations. These students rotate on internal medicine, inpatient cardiology, MICU, endocrinology, infectious disease, and nephrology. Many of these trainees interviewed with us and eventually matched to become residents.

## LISTING OF RESIDENCY PROGRAM LEADERSHIP


**Jeff House, DO, Professor, Associate Chair of Education & Quality Improvement, and Program Director**

Medical School / Graduation date  
Rotating Internship  
Internship/residency and year

Nova Southeastern University  
Broward General Hospital  
University of Florida Jacksonville


**Carlos Palacio, MD, Professor, Associate Program Director**

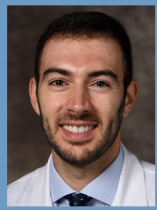
Medical School / Graduation date  
Internship/residency and year  
Chief Medical Resident

University of Miami  
University of Florida Jacksonville  
University of Florida Jacksonville


**Elisa Sottile, MD, Assistant Professor, Associate Program Director, and Clerkship Director**

Medical School / Graduation date  
Internship/residency and year  
Chief Medical Resident

Temple University School of Medicine  
Graduate Hospital, Philadelphia, PA  
Graduate Hospital, Philadelphia, PA


**Bashar Al-Turk, DO, Post-doctoral Associate and Chief Medical Resident**

Medical School / Graduation date  
Internship/residency and year  
Chief Medical Resident

Lake Erie College of Osteopathic Medicine  
University of Florida Jacksonville  
University of Florida Jacksonville


**Julio Perez-Downes, DO, Post-doctoral Associate and Chief Medical Resident**

Medical School / Graduation date  
Internship/residency and year  
Chief Medical Resident

Lake Erie College of Osteopathic Medicine  
University of Florida Jacksonville  
University of Florida Jacksonville

## PUBLICATIONS

Sorted by category (published manuscripts, published abstracts, presentations and grants), and by year within each category. Residents are underlined.

### Published manuscripts

Nguyen B, Hernandez MDMM, Baldeo C, Cury J, Ferreira JA. A case-report of successful use of thromboelastography to manage anticoagulation therapy in a patient with concomitant catastrophic antiphospholipid syndrome and heparin-induced thrombocytopenia. *Blood Coagul Fibrinolysis*. 2019 Jun;30(4):171-175.

Burden Z, Fasen M, Judkins BL, Isache C. A case of West Nile virus encephalitis accompanied by diabetic ketoacidosis and rhabdomyolysis. *IDCases*. 2019 Feb 13;15:e00505.

Maharaj S, Chang S, Seegobin K, Perez-Downes J, Zuberi L, Shaikh M. Dynamic right ventricular outflow tract obstruction from a pedunculated cardiac metastasis. *J Echocardiogr*. 2018 Dec;16(4):185-186. *J Echocardiogr*. 2018 Dec;16(4):185-186.

Maharaj S, Chang S, Seegobin K, Morales J, Aysola A, Rana F, Shaikh M. Temporality of heparin-induced antibodies: a retrospective study in outpatients undergoing hemodialysis on unfractionated heparin. *Exp Hematol Oncol*. 2018 Sep 14;7:23.

Thomas A, de Souza Ribeiro B, Malespin M, de Melo SW Jr. Botulinum toxin as a treatment for refractory gastroparesis: a literature review. *Curr Treat Options Gastroenterol*. 2018 Dec;16(4):479-488.

Maharaj S, Chang S. Anti-PF4/heparin antibodies are increased in hospitalized patients with bacterial sepsis. *Thromb Res*. 2018 Nov;171:111-113.

Ruiz J, Ganji M, Canha C, Isache C. A challenging diagnosis of ascites: a case report of peritoneal tuberculosis. *Case Rep Infect Dis*. 2018 Oct 23;2018:8136476.

Seegobin K, Staggs E, Khawaja R, Maharaj S, Gautam S, Smotherman C, Rana F. Pilot study on the occurrence of multiple cancers following cancer-related therapy at the University of Florida, Jacksonville (2011–2016). *J Investig Med*. 2018 Oct;66(7):1050-1054.

Maharaj S, Brown M, Seegobin K, Isache C. Sarcoidosis presenting with facial swelling (Heerfordt syndrome). *Clin Case Rep*. 2018 Sep 5;6(10):2023-2024.

Maharaj S, Chang S, Seegobin K, Morales J, Aysola A, Rana F, Shaikh M. Temporality of heparin-induced antibodies: a retrospective study in outpatients undergoing hemodialysis on unfractionated heparin. *Exp Hematol Oncol*. 2018 Sep 14;7:23.

Maharaj S, Seegobin K, Shaikh M, Rana F. Flashes of light and floaters: an unusual presentation of urothelial carcinoma. *BMJ Case Rep*. 2018 Aug 29;2018.

Seegobin K, Gharia B, Maharaj S, Zuberi L. Coexistent breast cancer and essential thrombocythemia: how we addressed the therapeutic challenges. *Case Rep Hematol*. 2018 Aug 12;2018:2080185.

Najjar N, Staiano P, Louis M. Obstructive sleep apnea and cardiovascular disease in women. *Cardiovascular Innovations and Applications Vol. 3 No. 4 (2019) 421–434*.

Gharia B, Seegobin K, Mahida H, Shaikh M, Matthews Hew T, Pham D. Fatal type b lactic acidosis associated with metastatic colorectal cancer: a case report with review of literature, pathogenesis, and treatment. *J Investig Med High Impact Case Rep*. 2018 Jul 19;6:2324709618788101.

Ganji M, Ruiz-Morales J, Ibrahim S. Acute lymphocytic myocarditis: a case report. *J Geriatr Cardiol*. 2018 Jul;15(7):517-518.

Perez-Downes J, Palacio C, Ibrahim S, Shelley P, Miller A, Reddy P. Prognostic utility of NT-proBNP greater than 70,000 pg/mL in patients with end stage renal disease. *J Geriatr Cardiol*. 2018 Jul;15(7):476-478.

Green KR, Harris C, Shuja A, Malespin M, De Melo SW Jr. Intestinal spirochetosis: an obscure cause of lower gastrointestinal bleeding. *Cureus*. 2018 Jul 12;10(7):e2970.

### **Published abstracts**

Bajric B, Najjar N, Seeram V, Cury JD. Secondary pulmonary alveolar proteinosis presenting as steroid non-responsive interstitial lung disease in anti-mda5 associated amyopathic dermatomyositis. *Am J Respir Crit Care Med* 2019;199:A5436.

Nassri AB, Stemboroski L, Attarha B, Harris C, Schey R. Correlation of novel inflammatory-nutritional biomarkers with high resolution manometry parameters and distal latency. *Gastroenterology* 2019;156(6):S-1015-S-1016.

Morales Hernandez M, Landicho MA, Serrano I, Wehmeier K. Challenging therapeutic approach for central diabetes insipidus. *J Gen Intern Med* 2019;34(Suppl 2):S504.

Rivas Rios JR, Richardson A, Rivas A, Isache C, Franchi F. An uncommon cause of infective endocarditis. *Journal of the American College of Cardiology* 2019 Mar 73;9(1):2572.

Antoine S, Pineda Maldonado A, Rivas Rios JR, Smotherman C, Gautam S, Miller A. Patent foramen ovale, friend or foe in heart failure patients? *Journal of the American College of Cardiology* 2019 Mar 73;9(1):985.

Thomas A, Patel R, Davison N, Isache C. Extrahepatic hepatocellular carcinoma metastasis masquerading as a forehead hematoma. *Journal of Investigative Medicine* 2019;67:418.

Canha C, Bajric B, Martinez AE, Rana F. Sonidegib in nevoid basal cell carcinoma syndrome. *Journal of Investigative Medicine* 2019;67:433.

Bajric B, Shelley P, Canha C, Attarha B, Reddy P. Toxic epidermal necrolysis due to ceftaroline complicating persistent MRSA bacteremia. *Journal of Investigative Medicine* 2019;67:452.

Canha C, Morales Hernandez M, Boshnick L, Reddy P. Lower extremity lymphedema secondary to kaposi sarcoma. *Journal of Investigative Medicine* 2019;67:453.

Hernandez J, Boshnick L, Green KR, Martinez AE. *Aeromonas sobria*: a rare and fulminant cause of septic shock in hepatobiliary disease. *Journal of Investigative Medicine* 2019;67:455.

Hernandez J, Vahdat K, Rivas Rios JR, Serrano I, Ruiz J, Isache C. Bilateral cavernous sinus thrombosis complicating pansinusitis in HIV patient. *Journal of Investigative Medicine* 2019;67:456.

Horn C, Warden U, Shah S, Lyons B, Reddy P. The lung that cried wolf. *Journal of Investigative Medicine* 2019;67:456.

Lung J, Rivas Rios JR, Staiano P. The pericardium: an unusual location for methicillin resistant staphylococcus aureus. *Journal of Investigative Medicine* 2019;67:459.

Morales Hernandez M, Canha C, Hernandez JM, Kogler W, Reddy P. *Shewanella* algae as an unusual cause of septic shock: an emergent pathogen. *Journal of Investigative Medicine* 2019;67:461.

Serrano Santiago I, Shelley P, Patel H, Warda E. A case of chronic invasive fungal rhinosinusitis presenting with chronic headaches in immunocompetent patient. *Journal of Investigative Medicine* 2019;67:465.

Verdecia J, Hernandez JM, Izzo C, Sottile E, Isache C. A side effect of ceftaroline in MRSA meningitis treatment. *Journal of Investigative Medicine* 2019;67:466.

Kogler W, Rivas Rios JR, Morales Hernandez M, Seeram V. Bardet biedl syndrome with early onset metastatic colon cancer. *Journal of Investigative Medicine* 2019;67:469.

Carlson JA, Sadiq H, Chique JL, Makary R, James IR. A case of pyoderma gangrenosum masking underlying henoch-schonlein purpura. *Journal of Investigative Medicine* 2019;67:560.

Rivas Rios JR, Richardson A, Morales Hernandez M. An uncommon cause of cardiac tamponade. *Journal of Investigative Medicine* 2019;67:371.

Martinez AE, Canha C, Ruiz J. Wellens syndrome: a case report. *Journal of Investigative Medicine* 2019;67:393.

Morales Hernandez M, Omar M, Hernandez JM, Rivas Rios JR, Sottile E. Brugada pattern in severe hypothyroidism. *Journal of Investigative Medicine* 2019;67:404.

Patel R, Freedman R, Zirulnik A, House J. A jaundiced 86 year old man with 40 pound weight loss. *Journal of Investigative Medicine* 2019;67:415.

Maharaj S, Chang S, Seegobin K, Rana F, Shaikh M. Anti-PF4/Heparin antibody levels in bacteremia, fungemia and sepsis. *Blood* 2018;132:3752.

Serrano Santiago I, Seegobin K, Gonzales K, Hernandez, J. Life-threatening menorrhagia due to profound hypothyroidism. *Thyroid* 2018;28:A-15.

### **Presentations**

Canha C. Implementation of a physician order set improves adherence to hospital policy: a quality improvement initiative. Poster presentation at: University of Florida Advances in Medical Education; Jacksonville, FL. June 2019.

Canha C. Pilot study: heart failure management unit - impact on readmission rates, mortality and length of stay. Poster presentation at: University of Florida Advances in Medical Education; Jacksonville, FL. June 2019.

Lung J. A standardized template for improving patient transfers from the medical ICU to hospital ward services. Poster presentation at: University of Florida Advances in Medical Education; Jacksonville, FL. June 2019.

Bajric B. Secondary pulmonary alveolar proteinosis presenting as steroid non-responsive interstitial lung disease in anti-mda5 associated amyopathic dermatomyositis. Poster presentation at: American Thoracic Society International Conference; Dallas, TX. May 2019.

Attarha B. Correlation of novel inflammatory-nutritional biomarkers with high resolution manometry parameters and distal latency. Poster presentation at: Digestive Disease Week; San Diego, CA. May 2019.

Morales Hernandez M. Challenging therapeutic approach for central diabetes insipidus. Poster presentation at: Society of General Internal Medicine Annual Meeting; Washington, DC. May 2019.

Kogler W. A case of rapidly progressive interstitial lung disease associated with MDA-5 positive dermatomyositis. Poster presentation at: American College of Physicians Internal Medicine Meeting; Philadelphia, PA. April 2019.

Rivas Rios JR. An uncommon cause of infective endocarditis. Poster presentation at: American College of Cardiology 68<sup>th</sup> Annual Scientific Session; New Orleans, LA. March 2019.

Oye M. Neurosarcoidosis manifesting as panhypopituitarism. Poster presentation at: Florida Chapter American College of Physicians; Orlando, FL. March 2019.

Fasen M. Nocardia, a deceptive hand - disseminated nocardiosis in an immunocompetent patient. Poster presentation at: Florida Chapter American College of Physicians; Orlando, FL. March 2019.

Jadeja S. Topiramate induced type 3 renal tubular acidosis. Poster presentation at: Florida Chapter American College of Physicians; Orlando, FL. March 2019.

Omar M. Renal artery stenosis presenting as preeclampsia. Poster presentation at: Florida Chapter American College of Physicians; Orlando, FL. March 2019.

Wardan U. Legionnaire's disease presenting as hypoxic respiratory failure in patient with HIV. Poster presentation at: American Federation of Medical Research Southern Regional Meeting; New Orleans, LA. February 2019.

Verdecia J. A side effect of ceftaroline in MRSA meningitis treatment. Poster presentation at: American Federation of Medical Research Southern Regional Meeting; New Orleans, LA. February 2019.

Thomas A. Extrahepatic hepatocellular carcinoma metastasis masquerading as a forehead hematoma. Poster presentation at: American Federation of Medical Research Southern Regional Meeting; New Orleans, LA. February 2019.

Staiano P. A classic presentation of an exceedingly rare condition: myxedema coma. Poster presentation at: American Federation of Medical Research Southern Regional Meeting; New Orleans, LA. February 2019.

Shelley P. Squamous cell carcinoma and chronic lymphocytic leukemia in cervical lymph node biopsy – a mixed picture. Poster presentation at: American Federation of Medical Research Southern Regional Meeting; New Orleans, LA. February 2019.

Shelley P. A deadly duo: acute promyelocytic leukemia complicated by concurrent disseminated intravascular coagulation and tumor lysis syndrome. Poster presentation at: American Federation of Medical Research Southern Regional Meeting; New Orleans, LA. February 2019.

Serrano Santiago I. A case of chronic invasive fungal rhinosinusitis presenting with chronic headaches in immunocompetent patient. Poster presentation at: American Federation of Medical Research Southern Regional Meeting; New Orleans, LA. February 2019.

Patel R. A jaundiced 86 year old man with 40 pound weight loss. Poster presentation at: American Federation of Medical Research Southern Regional Meeting; New Orleans, LA. February 2019.

Patel H. Progressive vision loss due to ocular syphilis. Poster presentation at: American Federation of Medical Research Southern Regional Meeting; New Orleans, LA. February 2019.

Morales M. Brugada pattern in severe hypothyroidism. Poster presentation at: American Federation of Medical Research Southern Regional Meeting; New Orleans, LA. February 2019.

Morales M. Shewanella algae as an unusual cause of septic shock: an emergent pathogen. Poster presentation at: American Federation of Medical Research Southern Regional Meeting; New Orleans, LA. February 2019.

Martinez A. Wellens syndrome: a case report. Poster presentation at: American Federation of Medical Research Southern Regional Meeting; New Orleans, LA. February 2019.

Lung J. The pericardium: an unusual location for methicillin resistant staphylococcus aureus. Poster presentation at: American Federation of Medical Research Southern Regional Meeting; New Orleans, LA. February 2019.

Kogler W. Bardet biedl syndrome with early onset metastatic colon cancer. Poster presentation at: American Federation of Medical Research Southern Regional Meeting; New Orleans, LA. February 2019.

Horn C. The lung that cried wolf. Poster presentation at: American Federation of Medical Research Southern Regional Meeting; New Orleans, LA. February 2019.

Hernandez J. Bilateral cavernous sinus thrombosis complicating pansinusitis in HIV patient. Poster presentation at: American Federation of Medical Research Southern Regional Meeting; New Orleans, LA. February 2019.



Hernandez J. *Aeromonas sobria*: a rare and fulminant cause of septic shock in hepatobiliary disease. Poster presentation at: American Federation of Medical Research Southern Regional Meeting; New Orleans, LA. February 2019.

Carlson JA. A case of pyoderma gangrenosum masking underlying henoch-schonlein purpura. Poster presentation at: American Federation of Medical Research Southern Regional Meeting; New Orleans, LA. February 2019.

Canha C. Sonidegib in nevoid basal cell carcinoma syndrome. Poster presentation at: American Federation of Medical Research Southern Regional Meeting; New Orleans, LA. February 2019.

Canha C. Lower extremity lymphedema secondary to kaposi sarcoma. Poster presentation at: American Federation of Medical Research Southern Regional Meeting; New Orleans, LA. February 2019.

Bajric B. Toxic epidermal necrolysis due to ceftaroline complicating persistent MRSA bacteremia. Poster presentation at: American Federation of Medical Research Southern Regional Meeting; New Orleans, LA. February 2019.

Rivas Rios JR. An uncommon cause of cardiac tamponade. Oral presentation at: American Federation of Medical Research Southern Regional Meeting; New Orleans, LA. February 2019 (Cardiovascular Case Report Award).

Bahloul R. An interesting case of necrotizing autoimmune myopathy. Oral presentation at: American Federation of Medical Research Southern Regional Meeting; New Orleans, LA. February 2019.

Omar M. Arteriovenous fistula formation after central venous catheterization. Poster presentation at: Society of Hospital Medicine Meeting Florida Chapter; Jacksonville, FL. January 2019.

Oye M. A case of sepsis secondary to pneumonia unmasking brugada pattern on electrocardiogram. Poster presentation at: Society of Hospital Medicine Meeting Florida Chapter; Jacksonville, FL. January 2019.

Krishnan N. Cutaneous necrotizing cellulitis from *C. tropicalis* infection in an immunocompromised host. Poster presentation at: Society of Hospital Medicine Meeting Florida Chapter; Jacksonville, FL. January 2019.

Verdecia J. Smoking gun is on the smear. Poster presentation at: Society of Hospital Medicine Meeting Florida Chapter; Jacksonville, FL. January 2019.

Fasen M. Out of the nephritis and into the nephritic. Poster presentation at: Society of Hospital Medicine Meeting Florida Chapter; Jacksonville, FL. January 2019.

Maharaj S. Anti-PF4/Heparin antibody levels in bacteremia, fungemia and sepsis. Poster presentation at: American Society of Hematology Annual Meeting; San Diego, CA. December 2018.

Warda E. A case of lymphocytic hypophysitis presenting with amenorrhea and galactorrhea. Poster presentation at: Southern Hospital Medicine Conference; Atlanta, GA. October 2018.

Warda E. A case of thyrotrophic cell hyperplasia resolving with levothyroxine supplementation. Poster presentation at: Southern Hospital Medicine Conference; Atlanta, GA. October 2018.

Verdecia J. Superior vena cava syndrome masquerading as idiopathic angioedema. Poster presentation at: Southern Hospital Medicine Conference; Atlanta, GA. October 2018.

Jadeja S. A clinical vignette: large secondary spontaneous pneumothorax. Poster presentation at: Southern Hospital Medicine Conference; Atlanta, GA. October 2018.

Kogler W. Endocarditis caused by *Stenotrophomonas maltophilia*; a rare presentation of an emerging opportunistic pathogen. Poster presentation at: Southern Hospital Medicine Conference; Atlanta, GA. October 2018.



Canha C. Nevoid basal cell carcinoma syndrome (Gorlin-Goltz Syndrome): a case report. Poster presentation at: Southern Hospital Medicine Conference; Atlanta, GA. October 2018.

Baldeo C. A sleeping subdural hemorrhage: Hickam's dictum versus Occam's razor in the intensive care unit. Poster presentation at: Southern Hospital Medicine Conference; Atlanta, GA. October 2018.

Baldeo C. A rare case of sinus node dysfunction in Lyme disease. Poster presentation at: Southern Hospital Medicine Conference; Atlanta, GA. October 2018.

Baldeo C. Treat the patient, not the electrocardiogram! A case of misdiagnosed torsade de pointes. Poster presentation at: Southern Hospital Medicine Conference; Atlanta, GA. October 2018.

Serrano Santiago, I. Life-threatening menorrhagia due to profound hypothyroidism. Poster presentation at: American Thyroid Association Annual Meeting; Washington, DC. October 2018.

Bajric B. Brunner's gland hyperplasia masking pancreatic cancer in a 21-year old. Poster presentation at: Florida Chapter American College of Physicians; Tampa, FL. September 2018.

Canha C. Pulseless electrical activity in acute pulmonary embolism mimicking STEMI. Poster presentation at: Florida Chapter American College of Physicians; Tampa, FL. September 2018.

Verdecia J. Marijuana induced atrioventricular block. Poster presentation at: Florida Chapter American College of Physicians; Tampa, FL. September 2018.

Warda F. A case of thyrotrophic cell hyperplasia resolving with levothyroxine supplementation. Poster presentation at: Florida Chapter American College of Physicians; Tampa, FL. September 2018.

### **Book Chapter**

Palfrey WT, Staiano P, Green KR, Weyh A, Salman S, Louis M. Medical Management of Obstructive Sleep Apnea. In: Salman S, ed. *Modern Management of Obstructive Sleep Apnea*. New York, NY: Springer; 2019:7-23.

## **GRANTS**

Serrano Santiago I. Anti-inflammatory effects of d-allulose in coronary artery endothelial cells. Project Period: July 2018-June 2019. Sponsor: University of Florida College of Medicine - Jacksonville. Role: Principal Investigator.

## HONORS AND AWARDS

Michael Omar, MD	Intern of the Year
Peter Staiano, DO	Senior Resident of the Year
Cherisse Baldeo, MD	Procedure Completion Award
Nimeh Najjar, MD	Fellow of the Year
Carmen Isache, MD	Teacher of the Year
Nancy Davison, DO	Best Conference Attendance
Karan Seegobin, MD	ACP Resident of the Year
Satish Maharaj, MD	Robert L. Wears Outstanding Resident in Quality and Patient Safety Award
Kevin Green, MD	Ann Harwood-Nuss Resident Advocate Award
Satish Maharaj, MD	Malcolm T. Foster, Jr., MD Scholarship Award

Chris Izzo, DO; Jorge Verdecia, MD; and Karan Seegobin, MD competed in the American College of Physicians, Florida Chapter - Doctor's Dilemma™ State Team.

Wing Aung, MD and Elisa Sottile, MD became Fellows in the American College of Physicians at the annual meeting in Philadelphia, PA in April 2019.

Ghania Masri, MD and Elisa Sottile, MD won WellCare's 2018 Patient Satisfaction Award.

Ashley Thomas, MD is one of the recipients of the resident UF College of Medicine Exemplary Teachers Award.

Dominick Angiolillo, MD; Theodore Bass, MD; Joe Chehade, MD; Dave Cury, MD; Linda Edwards, MD; Gunjan Gandhi, MD; Michael Haas, PhD; Hadi Hatoum, MD; Jason Hew, MD; Jeff House, DO; Carmen Isache, MD; Lisa Jones, MD; Ravindra Maharaj, MD; Ron Mars, MD; Ghania Masri, MD; Robert Percy, MD; Andres Pineda Maldonado, MD; Michael Sands, MD; Srinivasan Sattiraju, MD; Vandana Seeram, MD; Elisa Sottile, MD; and Kent Wehmeier, MD are recipients of the faculty UF College of Medicine Exemplary Teaching Award.

## ENDOWMENTS AND GIFTS

The Anne and Max Michael, Jr. Education Fund, Established 2006, by Mrs. Anne Michael

## CLASS OF 2019 DESTINATIONS

<u>Chief Medical Residents</u>	<u>Professional Status</u>	<u>Location</u>
Bashar Al-Turk, DO	Cardiology Fellowship	University of Florida Jacksonville
Julio Perez-Downes, DO	Cardiology Fellowship	Mayo Clinic, Jacksonville
<u>Preliminary Residents</u>	<u>Professional Status</u>	<u>Location</u>
Lauren Boshnick, MD	Dermatology Residency	Florida State University
Yessenia Marquez, MD	Neurology Residency	University of Florida Jacksonville
Ahsan Niazi, MD	Neurology Residency	University of Florida Jacksonville
Yulia Salamatova, DO	Neurology Residency	University of Florida Jacksonville
William Scharpf, DO	Neurology Residency	University of Florida Jacksonville
Ambreona Thomas, DO	Physical Med Rehab Residency	Sinai Hospital, Baltimore, MD
<u>Categorical Residents</u>	<u>Professional Status</u>	<u>Location</u>
Rami Bahloul, MD	Private Group Practice	Albany, GA
Cherisse Baldeo, MD	Vascular Medicine Fellowship	Univ. of Virginia, Charlottesville
Zachary Burden, MD	Pulmonary/Critical Care Fellowship	University of Florida Jacksonville
Jeremy Carlson, MD	Nephrology Fellowship	University of Florida Gainesville

Kevin Green, MD  
 Jarelys Hernandez Jimenez, MD  
 Cody Horn, DO  
 Satish Maharaj, MD  
 Anna McCarthy, MD  
 Jose Ruiz Morales, MD  
 Karan Seegobin, MD  
 Ivan Serrano Santiago, MD  
 Peter Staiano, DO  
 Ashley Thomas, MD

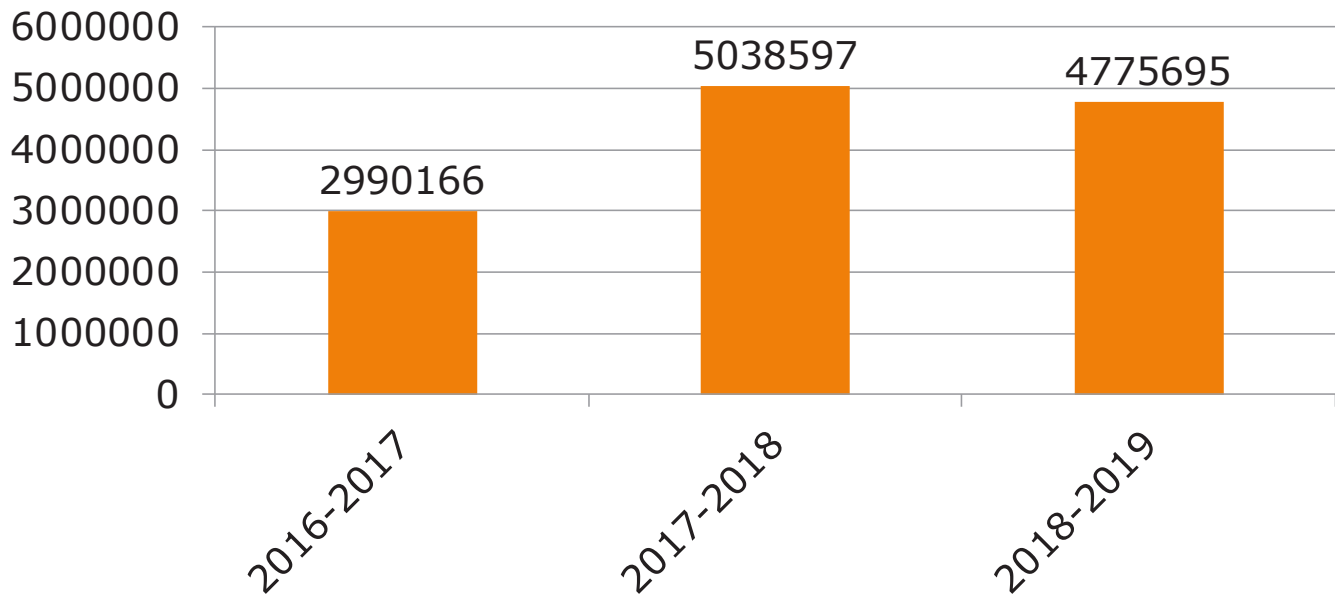
Chief Medical Resident  
 Infectious Disease Fellowship  
 Infectious Disease Fellowship  
 Hematology Onc. Fellowship  
 Private Group Practice  
 Cardiology Fellowship  
 Hematology Onc. Fellowship  
 Endocrinology Fellowship  
 Chief Medical Resident  
 Private Group Practice

University of Florida Jacksonville  
 University of South Florida  
 University of South Florida  
 University of Louisville, Kentucky  
 Jacksonville, FL  
 University of Florida Jacksonville  
 Mayo Clinic, Jacksonville  
 Methodist Hospital, Houston, TX  
 University of Florida Jacksonville  
 Jacksonville, FL

**DEPARTMENT RESEARCH**  
**ACADEMIC YEAR 2019 (7/18 - 6/19)**

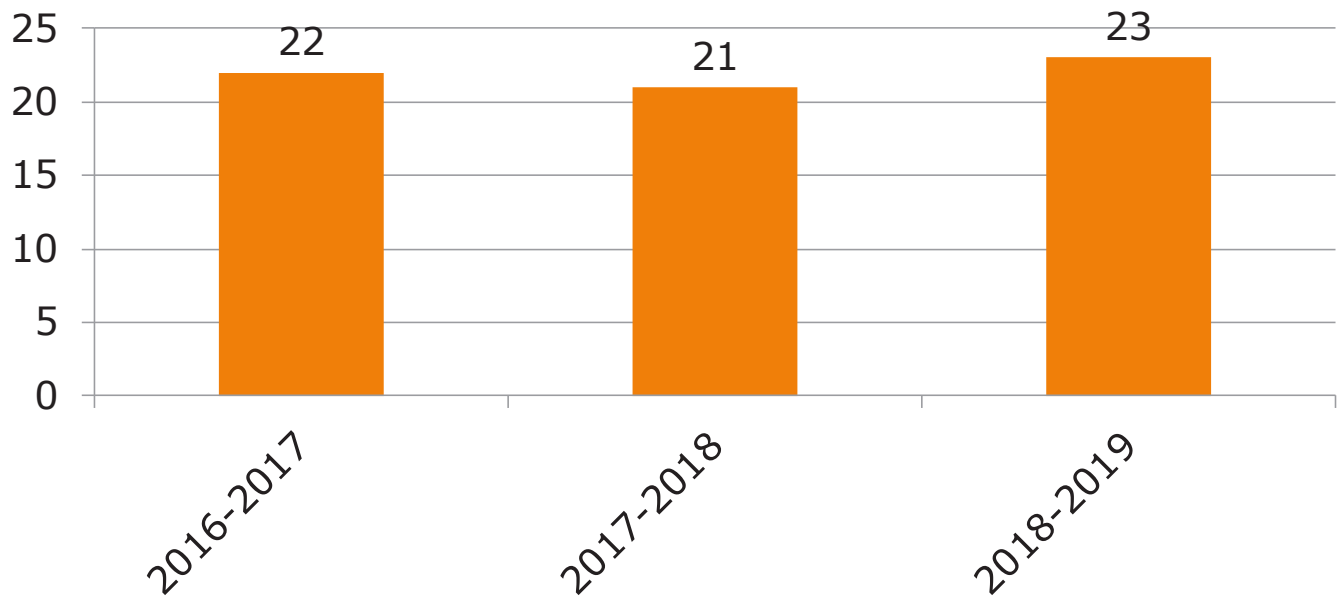
The faculty in the Department of Medicine continue to obtain research awards and train future investigators; an important aspect of the University of Florida College of Medicine-Jacksonville’s mission. Trends in external funding for fiscal year 2018-2019 and two prior years are shown in **Figure 1**.

**Total Grant Revenue**

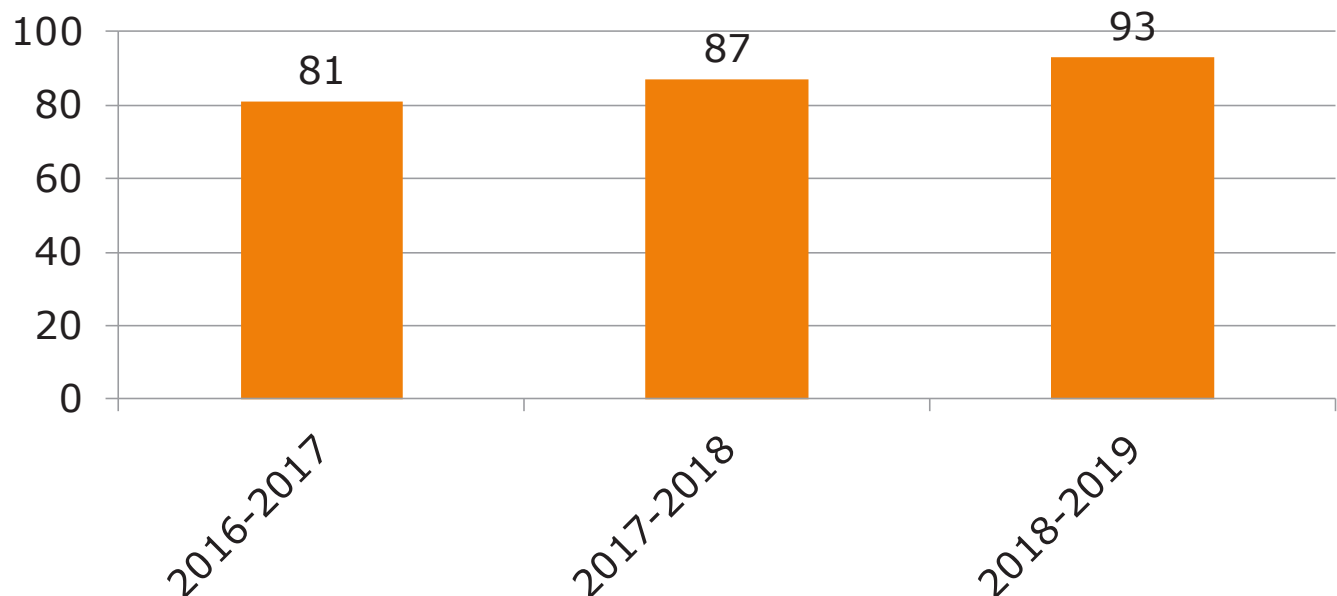


External funding from federal, state, industry, foundation and other sources decreased 5.2% this fiscal year compared to last. This occurred even though there were increases in the number of funded investigators (from 21 investigators last fiscal year to 23 investigators this fiscal year) (**Figure 2**) as well as the number funded projects (from 87 projects last fiscal year to 93 projects this fiscal year) (**Figure 3**).

## # Funded Investigators



## # Funded Projects



Several faculty members in the Department of Medicine have basic/translational science projects in the Medical Research Building. **Michael Haas, Ph.D.**, (Endocrinology) is investigating molecular mechanisms that regulate expression of genes involved in cholesterol transport and oxidative and endoplasmic reticulum stress in human coronary artery endothelial cells. **Kent Wehmeier, M.D.**, (Endocrinology) is investigating the effects of nicotine on cellular stress in smokers and in human coronary endothelial cells. **Charles Heilig, M.D.**, and **Yongxin Gao, M.D.**, (Nephrology and Hypertension) are examining the regulation of glucose transporter 1 expression by mechano-growth factor as well as examining the role of glucose transporters in liver cancer.

Residents and sub-specialty fellows in the Department of Medicine are assigned a mentor and participate in basic, translational, quality improvement research, epidemiological, or clinical research. Two fellows, **Shrina Partekh, M.D.**, (Endocrinology) and **Irtiza Hasan, M.D.**, (Nephrology and Hypertension) in the Department of Medicine received Deans Fund Research Grants enabling them to carryout research projects under the mentorship of faculty. This has increased the scholarly output of our trainees.

**DIVISION OF CARDIOLOGY**  
**ACADEMIC YEAR 2019 (7/18 - 6/19)**

### Highlights

- Expanded Transesophageal Echo (TEE) services (North and downtown campuses)
- Increased outpatient TEE volume in downtown CV TEE suite; relationship with anesthesiology
- Increased volume in structural heart program (Mitraclip and Watchman)
- Started Congestive Heart Failure (CHF) program w/addition of new CHF Medical Director and 2 CHF APRNs (Dr. Emil Missov)
- Added new Electrophysiology Medical Director (Dr. Samy Elayi)
- Women's Heart Program expanded their *Prime of Your Life* series

**Education:** The fellowships programs remain competitive. Our fellows have received several research awards including Dean's grants and several presentations on Research Day and other regional and national venues. We continue to successfully place graduates interested in more advanced training into highly competitive subspecialty programs nationwide. Our post doc/OPS research fellowship has expanded and are integrated with the clinical and translations aspects of the Cardiovascular Research program and partake in other educational activities within the Division of Cardiology.

The following initiatives have taken place and are resulting in positive results:

- Monday Morning Report: Mandatory meeting for all fellows to discuss important, challenging, complex cases that present to CCU over the weekend or preceding week.
- Goals and objectives for every clinical and nonclinical rotation by program year level
- Development of Wellness/Well-Being program for all faculty and fellows
- Board review/ in-training exam review sessions twice a month
- An advanced imaging rotation at Mayo with video conferencing capability
- Guest lecture faculty participating in our weekly didactic conference sessions
  - o Pulmonary series with Dr. Seeram (UF – Jax)
  - o Advance imaging series with Dr. Brian Shapiro and Dr. Anita Wokhlu (Mayo) (UF – Gainesville)
  - o Advance heart failure series with Dr. Parag Patel (Mayo) and Dr. Juan Aranda (UF – Gainesville)
  - o Adult Congenital Heart Disease series with Dr. Brandon Kuebler (Wolfson/UF – Jacksonville)
- Updated core curriculum lectures on every cardiology discipline reviewed twice yearly by Didactic Curriculum Committee
- Hemodynamic simulation programs twice per year
- Transthoracic and Transesophageal Echo simulation program
- General Cardiology fellows develop quality assessment and improvement protocols and present them at research conferences
- General Cardiology fellows participate in a variety of research opportunities in the division
- Interventional data at Research Day: Cardiology fellows develop quality assessment and quality improvement protocols and present the data at research day
- Cardiology Grand Round series with invited internal, national and/or international experts
- Opportunities to obtain CME credit through Cardiology Grand Rounds and Cath Conferences
- Developing opportunity for Clinical Cardiac Electrophysiology Boot Camp



**Research:** Our faculty continues to excel in research, scholarly production and participation in national and international scientific sessions. We have approximately 50 ongoing studies, which range from basic/translational research to large scale clinical trials in various areas of cardiovascular disease. These include investigator initiated as well as sponsored studies. We have published approximately 40 peer-reviewed manuscripts, numerous abstracts and presentations at local, national and international meetings and several book chapters. We currently hold leadership positions in most major cardiovascular societies and editorial positions in many major cardiovascular journals. We continue to receive consistently increasing extramural funding. Our research staff has also expanded to meet the demands of our growing research operations following our recent relocation to a new cardiovascular research building which hosts a state-of-the-art thrombosis research laboratory, patient waiting area, clinical visit rooms, and offices for research staff.

### LISTING OF FACULTY MEMBERS



**Dominick Angiolillo, M.D. Ph.D., Professor**

Medical School

Professional Education – Ph.D.

Internship/residency

Subspecialty training

The Catholic University of the Sacred Heart Medical School, Italy

The Catholic University of the Sacred Heart Medical School, Italy

The Catholic University of the Sacred Heart Medical School, Italy

San Carlos University Hospital, Madrid Spain



**Theodore Bass, M.D., Professor and Division Chief**

Medical School

Internship/residency

Subspecialty training

Brown University

Mayo Clinic

Boston University



**John Catanzaro, M.D., Assistant Professor**

Medical School

Internship/residency

Subspecialty training

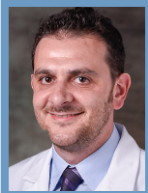
Subspecialty training

State University of New York

North Shore University Hospital

North Shore University Hospital

The John Hopkins Hospital – Cardiac Electrophysiology



**Francesco Franchi, M.D., Assistant Professor**

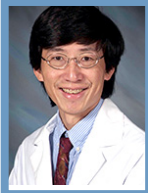
Medical School

Subspecialty training

University of Modena and Reggio Emilia, Modena, Italy

School of Cardiology, University of Modena and Reggio Emilia,

Modena, Italy



**Steve Hsu, M.D., Associate Professor**

Medical School

Internship/residency

Subspecialty training

Washington University

Thomas Jefferson University

Thomas Jefferson University



**Robert Kim, M.D., Assistant Professor**

Medical School

Internship/residency

Subspecialty training

Tufts University School of Medicine – Boston, MA

St. Elizabeth's Medical Center – Boston, MA/

University of MA Medical Center-Worcester, MA

Dartmouth-Hitchcock Medical Center – Lebanon, NH

**Alan Miller, M.D., Professor**

Medical School  
Internship/residency  
Internship/residency  
Subspecialty training and year

University of Pittsburgh  
Mount Sinai  
George Washington University  
Cleveland Metropolitan Hospital

**Robert Percy, M.D., Associate Professor**

Medical School  
Internship/residency  
Subspecialty training  
Subspecialty training  
Subspecialty training

University of Mississippi  
University of Mississippi  
Jacksonville Health Education Programs  
Mass General Hospital – Cardiac Rehabilitation  
Joslin Clinic – Diabetes

**Andres Pineda Maldonado, M.D., Assistant Professor**

Medical School  
Internship/residency  
Subspecialty training  
Subspecialty training

Pontificia Universidad Javeriana, Bogota Colombia  
Mount Sinai Medical Center, Miami, FL  
Mount Sinai Medical Center, Miami, FL  
Mount Sinai Medical Center, Miami, FL–Interventional  
Cardiology  
Duke University Hospital – Structural Heart Disease  
Interventions

**Fabiana Rollini, M.D., Assistant Professor**

Medical School  
Subspecialty training

University of Modena and Reggio Emilia, Modena, Italy  
School of Cardiology, University of Modena and Reggio Emilia,  
Modena, Italy

**Srinivasan Sattiraju, M.D., Assistant Professor**

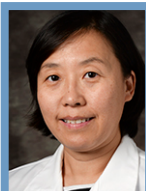
Medical School  
Internship/residency  
Subspecialty training

Adichunchanagri Institute of Medical Sciences, Karnataka, India  
University of Medicine and Dentistry of New Jersey  
University of Minnesota Medical School,

**Daniel Soffer, M.D., Associate Professor**

Medical School  
Internship/residency  
Subspecialty training  
Subspecialty training

Ben Gurion University, Israel  
Lenox Hill Hospital  
Lenox Hill Hospital – Cardiovascular Disease  
William Beaumont Hospital – Interventional Cardiology

**Jialin Su, M.D., Ph.D., Assistant Professor**

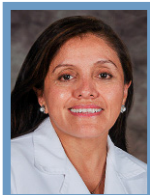
Medical School  
  
Professional Education – Ph.D.  
  
Internship/residency  
Subspecialty training  
Subspecialty training

Peking Union Medical College/Tsinghua University, Beijing,  
China  
Peking Union Medical College/Tsinghua University, Beijing,  
China  
North Shore-Long Island Jewish Health System  
Rhode Island Hospital/Brown University  
Beth Israel Deaconess Medical Center - Electrophysiology

**Siva Suryadevara, M.D., Assistant Professor**

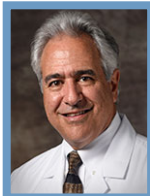
Medical School  
Internship/residency  
Subspecialty training

University of the West Indies  
University of Florida College of Medicine-Jacksonville  
University of Florida College of Medicine-Jacksonville

**Gladys Velarde, M.D., Associate Professor**

Medical School  
Internship/residency  
Subspecialty training

New York University School of Medicine  
Columbia Presbyterian Medical Center  
Boston University/Mount Sinai Hospital

**Martin Zenni, M.D., Associate Professor**

Medical School  
Internship/residency  
Subspecialty training

University of Chicago  
Tufts University  
Harvard Medical School

## PUBLICATIONS

**Angiolillo DJ**, Patti G, Chan KT, Han Y, Huang WC, Yakovlev A, Paek D, Del Aguila M, Girotra S, Sibbing D. De-escalation from ticagrelor to clopidogrel in acute coronary syndrome patients: a systematic review and meta-analysis. *J Thromb Thrombolysis*. 2019 Apr 19. doi: 10.1007/s11239-019-01860-7. [Epub ahead of print] PubMed PMID: 31004312.

Mehran R, Kalkman DN, **Angiolillo DJ**. Atrial fibrillation, with ACS and PCI: walking a tightrope. *Eur Heart J*. 2019 Apr 8. pii: ehz192. doi:10.1093/eurheartj/ehz192. [Epub ahead of print] PubMed PMID: 30957836.

**Franchi F**, James SK, Ghukasyan L, Budaj AJ, Cornel JH, Katus HA, Keltai M, Kontny F, Lewis BS, Storey RF, Himmelmann A, Wallentin L, **Angiolillo DJ**; PLATO Investigators. Impact of Diabetes Mellitus and Chronic Kidney Disease on Cardiovascular Outcomes and Platelet P2Y<sub>12</sub> Receptor Antagonist Effects in Patients With Acute Coronary Syndromes: Insights From the PLATO Trial. *J Am Heart Assoc*. 2019 Mar 19;8(6):e011139. doi: 10.1161/JAHA.118.011139. PubMed PMID: 30857464.

Capodanno D, **Angiolillo DJ**. Pre-Treatment With Oral P2Y<sub>12</sub> Inhibitors in Acute Coronary Syndromes Without ST-Segment Elevation: The Saga Continues. *J Am Coll Cardiol*. 2019 Mar 5;73(8):915-918. doi: 10.1016/j.jacc.2018.12.038. PubMed PMID: 30819359.

Montalescot G, **Angiolillo DJ**. Anticoagulation, the Unknown of the Antithrombotic Equation After Stenting of an Acute Coronary Syndrome. *J Am Coll Cardiol*. 2019 Feb 26;73(7):775-778. doi: 10.1016/j.jacc.2018.12.022. PubMed PMID: 30784670.

Massimi I, Alemanno L, Guarino ML, Guerriero R, Mancone M, Ceccacci A, Frati L, **Angiolillo DJ**, Pulcinelli FM. Aspirin-Dependent Effects on Purinergic P2Y<sub>1</sub> Receptor Expression. *Thromb Haemost*. 2019 Feb 13. doi: 10.1055/s-0039-1678707. [Epub ahead of print] PubMed PMID: 30759486.

Dickert NW, Scicluna VM, Adeoye O, **Angiolillo DJ**, Blankenship JC, Devireddy CM, Frankel MR, Goldkind SF, Kumar G, Ko YA, Mitchell AR, Nogueira RG, Parker RM, Patel MR, Riedford M, Silbergleit R, Speight CD, Spokoyny I, Weinfurt KP, Pentz RD. Emergency Consent: Patients' and Surrogates' Perspectives on Consent for Clinical Trials in Acute Stroke and Myocardial Infarction. *J Am Heart Assoc*. 2019 Jan 22;8(2):e010905. doi: 10.1161/JAHA.118.010905. PubMed PMID: 30663498.

**Franchi F, Rollini F, Rivas A, Wali M**, Briceno M, Agarwal M, Shaikh Z, Nawaz A, Silva G, Been L, **Smairat R<sup>f</sup>, Kaufman M<sup>f</sup>, Pineda AM, Suryadevara S, Soffer D, Zenni MM, Bass TA, Angiolillo DJ**. Platelet Inhibition With Cangrelor and Crushed Ticagrelor in Patients With ST-Segment-Elevation Myocardial Infarction Undergoing Primary Percutaneous Coronary Intervention. *Circulation*. 2019 Apr 2;139(14):1661-1670. doi: 10.1161/CIRCULATIONAHA.118.038317. PubMed PMID:30630341.

Capodanno D, **Angiolillo DJ**. Tailoring Antiplatelet Therapy in Patients Undergoing Transcatheter Aortic Valve Replacement: Navigating the Unknown. *JACC Cardiovasc Interv*. 2019 Jan 14;12(1):33-37. doi: 10.1016/j.jcin.2018.10.047. PubMed PMID: 30621975.

Greco A, Capodanno D, **Angiolillo DJ**. The Conundrum Surrounding Racial Differences on Ischaemic and Bleeding Risk with Dual Anti-Platelet Therapy. *Thromb Haemost*. 2019 Jan;119(1):9-13. doi: 10.1055/s-0038-1676612. Epub 2018 Dec 31. PubMed PMID: 30597496.

Gibson CM, Kerneis M, Yee MK, Daaboul Y, Korjian S, Mehr AP, Tricoci P, Alexander JH, Kastelein JJP, Mehran R, Bode C, Lewis BS, Mehta R, Duffy D, Feaster J, Halabi M, **Angiolillo DJ**, Duerschmied D, Ophuis TO, Merkely B. The CSL112-2001 trial: Safety and tolerability of multiple doses of CSL112 (apolipoprotein A-I [human]), an intravenous formulation of plasma-derived apolipoprotein A-I, among subjects with moderate renal impairment after acute myocardial infarction. *Am Heart J*. 2019 Feb;208:81-90. doi:10.1016/j.ahj.2018.11.008. Epub 2018 Nov 22. PubMed PMID: 30580130.

**Angiolillo DJ**, Goodman SG, Bhatt DL, Eikelboom JW, Price MJ, Moliterno DJ, Cannon CP, Tanguay JF, Granger CB, Mauri L, Holmes DR, Gibson CM, Faxon DP. Antithrombotic Therapy in Patients With Atrial Fibrillation Treated With Oral Anticoagulation Undergoing Percutaneous Coronary Intervention. *Circulation*. 2018 Jul 31;138(5):527-536. doi: 10.1161/CIRCULATIONAHA.118.034722. PubMed PMID:30571525.

**Angiolillo DJ**. Switching antiplatelet therapy in real-world clinical practice. *Cardiovasc Revasc Med*. 2018 Dec;19(8):897-898. doi:10.1016/j.carrev.2018.11.009. PubMed PMID: 30551835.

Capodanno D, Alfonso F, Levine GN, Valgimigli M, **Angiolillo DJ**. ACC/AHA Versus ESC Guidelines on Dual Antiplatelet Therapy: JACC Guideline Comparison. *J Am Coll Cardiol*. 2018 Dec 11;72(23 Pt A):2915-2931. doi: 10.1016/j.jacc.2018.09.057. Review. PubMed PMID: 30522654.

Rivas Rios JR, **Franchi F, Rollini F, Angiolillo DJ**. Diabetes and antiplatelet therapy: from bench to bedside. *Cardiovasc Diagn Ther*. 2018 Oct;8(5):594-609. doi: 10.21037/cdt.2018.05.09. Review. PubMed PMID: 30498684; PubMed Central PMCID: PMC6232350.

Åstrand M, Amilon C, Röshammar D, Himmelmann A, **Angiolillo DJ**, Storey RF, Gurbel PA, Bonaca MP, Hamrén B. Pharmacokinetic-pharmacodynamic modelling of platelet response to ticagrelor in stable coronary artery disease and prior myocardial infarction patients. *Br J Clin Pharmacol*. 2019 Feb;85(2):413-421. doi: 10.1111/bcp.13812. Epub 2018 Dec 18. PubMed PMID: 30414387; PubMed Central PMCID: PMC6339964.

Capodanno D, Mehran R, Gibson CM, **Angiolillo DJ**. CSL112, a reconstituted, infusible, plasma-derived apolipoprotein A-I: safety and tolerability profiles and implications for management in patients with myocardial infarction. *Expert Opin Investig Drugs*. 2018 Dec;27(12):997-1005. doi:10.1080/13543784.2018.1543399. Epub 2018 Nov 3. Review. PubMed PMID: 30376729.

Bonello L, **Angiolillo DJ**, Aradi D, Sibbing D. P2Y(12)-ADP Receptor Blockade in Chronic Kidney Disease Patients With Acute Coronary Syndromes. *Circulation*. 2018 Oct 9;138(15):1582-1596. doi: 10.1161/CIRCULATIONAHA.118.032078. PubMed PMID: 30354508.

Romano S, Buccheri S, Mehran R, **Angiolillo DJ**, Capodanno D. Gender differences on benefits and risks associated with oral antithrombotic medications for coronary artery disease. *Expert Opin Drug Saf*. 2018 Oct;17(10):1041-1052. doi: 10.1080/14740338.2018.1524869. Epub 2018 Sep 23. Review. PubMed PMID:30223690.

Capodanno D, **Angiolillo DJ**. Aspirin for primary prevention of cardiovascular disease. *Lancet*. 2018 Sep 22;392(10152):988-990. doi:10.1016/S0140-6736(18)31990-1. Epub 2018 Aug 26. PubMed PMID: 30158070.

**Angiolillo DJ**. Vascular access and antithrombotic therapy in patients with acute coronary syndrome. *Lancet*. 2018 Sep 8;392(10150):801-802. doi:10.1016/S0140-6736(18)31921-4. Epub 2018 Aug 25. PubMed PMID: 30153987.

Brugetta S, Gomez-Lara J, Caballero J, Ortega-Paz L, Teruel L, Fernandez MJ, Romaguera R, Martinez VA, Ñato M, Navarro EM, Gomez-Hospital JA, Vilches CC, Joyera M, Cequier A, **Angiolillo DJ**, Sabate M. Ticagrelor versus clopidogrel for recovery of vascular function immediately after successful chronic coronary total occlusion recanalization: A randomized clinical trial. *Am Heart J*. 2018 Oct;204:205-209. doi: 10.1016/j.ahj.2018.07.013. Epub 2018 Aug 2. PubMed PMID:30149889.

Mehran R, Faggioni M, Chandrasekhar J, **Angiolillo DJ**, Bertolet B, Jobe RL, Al-Joundi B, Brar S, Dangas G, Batchelor W, Prasad A, Gurm HS, Tumlin J, Stone GW. Effect of a Contrast Modulation System on Contrast Media Use and the Rate of Acute Kidney Injury After Coronary Angiography. *JACC Cardiovasc Interv*. 2018 Aug 27;11(16):1601-1610. doi: 10.1016/j.jcin.2018.04.007. PubMed PMID: 30139467.

**Angiolillo DJ**. Platelet Function or Genetic Testing for Guiding De-Escalation of Anti-Platelet Therapy: The Jury is Still Out. *Thromb Haemost*. 2018 Sep;118(9):1509-1511. doi: 10.1055/s-0038-1668546. Epub 2018 Aug 16. PubMed PMID: 30114718.

Van Tassel BW, Lipinski MJ, Appleton D, Roberts CS, Kontos MC, Abouzaki N, Melchior R, Mueller G, Garnett J, Canada J, Carbone S, Buckley LF, Wohlford G, Kadariya D, Trankle CR, Oddi Erdle C, Sculthorpe R, Puckett L, DeWilde C, Shah K, **Angiolillo DJ**, Vetrovec G, Biondi-Zoccai G, Arena R, Abbate A. Rationale and design of the Virginia Commonwealth University-Anakinra



Remodeling Trial-3 (VCU-ART3): A randomized, placebo-controlled, double-blinded, multicenter study. *Clin Cardiol*. 2018 Aug;41(8):1004-1008. doi: 10.1002/clc.22988. Epub 2018 Aug 17. PubMed PMID: 30033595; PubMed Central PMCID: PMC6153042.

Valgimigli M, Garcia Garcia H, Vrijens B, Vranckx P, McFadden EP, Costa F, Pieper K, Vock DM, Zhang M, Van Es GA, Tricoci P, Baber U, Steg G, Montalescot G, **Angiolillo DJ**, Serruys PW, Farb A, Windecker S, Kastrati A, Colombo A, Feres F, Jüni P, Stone GW, Bhatt DL, Mehran R, Tijssen JGP. Standardized classification and framework for reporting, interpreting, and analysing medication non-adherence in cardiovascular clinical trials: a consensus report from the Non-adherence Academic Research Consortium (NARC). *Eur Heart J*. 2018 Jul 9. doi:10.1093/eurheartj/ehy377. [Epub ahead of print] PubMed PMID: 29992264.

Capodanno D, Mehran R, Valgimigli M, Baber U, Windecker S, Vranckx P, Dangas G, **Rollini F**, Kimura T, Collet JP, Gibson CM, Steg PG, Lopes RD, Gwon HC, Storey RF, **Franchi F**, Bhatt DL, Serruys PW, **Angiolillo DJ**. Aspirin-free strategies in cardiovascular disease and cardioembolic stroke prevention. *Nat Rev Cardiol*. 2018 Aug;15(8):480-496. doi: 10.1038/s41569-018-0049-1. Review. PubMed PMID: 29973709.

Cornara S, Crimi G, Somaschini A, Cattaneo M, **Angiolillo DJ**, Palmerini T, De Servi S. Systemic inflammatory status is associated with increased platelet reactivity in the early period after acute coronary syndromes. *Platelets*. 2018 Jul;29(5):528-530. doi: 10.1080/09537104.2018.1457782. Epub 2018 Apr 4. PubMed PMID: 29617211.

**Pineda AM**, Harrison JK, Kleiman NS, Reardon MJ, Conte JV, O'Hair DP, Chetcuti S, Yakubov SJ, Popma JJ, Beohar N. The Impact of Preoperative Renal Dysfunction on the Outcomes of Patients Undergoing Transcatheter Aortic Valve Replacement. *J Am Coll Cardiol Cardiovasc Interv* 2019. In Press

**Pineda AM**, Rymer J, Wang A, Koweek LH, Plichta R, Williams A, Kiefer TL, Wang A, Gaca J, Hughes GC, Harrison JK. Outcomes of alternative access transcatheter aortic valve replacement. *J Invasive Cardiol* 2019. In Press.

**Franchi F, Rollini F**, Park Y, Hu J, Kureti M, Rivas J, **Faz G<sup>f</sup>**, **Yanarov D<sup>f</sup>**, Been L, **Pineda AM, Suryadevara S, Soffer D, Zenni MM, Bass TA, Angiolillo DJ**. Effects of peripheral opioid receptor antagonist methylnatrexone on the pharmacokinetic and pharmacodynamics profiles of ticagrelor in coronary artery disease patients treated with morphine. *J Am Coll Cardiol Cardiovasc Interv* 2019. In Press. *Circulation* 2018; 134:A19115.

**Pineda AM**, Harrison JK, Kleiman NS, Reardon MJ, Conte JV, O'Hair DP, Chetcuti S, Yakubov SJ, Popma JJ, Beohar N. The Impact of Preoperative Renal Dysfunction on the Outcomes of Patients Undergoing Transcatheter Aortic Valve Replacement. *Catheter Cardiovasc Interv* 2019;93(4):740-748.

**Pineda AM, Angiolillo DJ**. Oral Anticoagulation after TAVR in patients with atrial fibrillation: the certainty of uncertainty. *J Am Coll Cardiol Cardiovasc Interv* 2019. In Press.

**Pineda AM**, Harrison JK. "2019 Update: Evaluation and Management of Atrial Septal Defects and Patent Foramen Ovale" on Rao S CathSAP 5. American College of Cardiology. USA. 2019.

**Pineda AM**, Kiefer TL. Asymptomatic severe aortic valve stenosis – when to intervene: a review of the literature, current trials, and guidelines. *Curr Cardiol Rep* 2018;20(12):129.

**Pineda AM**, Harrison JK. "Treatment Options for Recurrent Thromboembolism in Patients with Cryptogenic Cerebrovascular Events: Medical Therapy versus Device and Surgical Closure of Patent Foramen Ovale" on Topaz O Cardiovascular Thrombus: From Pathology and Clinical Presentation to Imaging, Pharmacology and Interventions. Ed. Elsevier. USA. 2018.

**Pineda AM**, Sommer RJ, Rhodes J, Beohar N. Chapter: "Defects of the atrial septum" on Abraham WT and Lilly S Color Atlas and Synopsis of Interventional Cardiology. Ed. McGraw Hill. USA. 2018.

**Pineda AM**, Gowani SA, Mihos CG, Beohar N, Santana O. Persistent left superior vena cava: imaging correlation. *J Invasive Cardiol* 2018;30:E39-E40.

Kanjwal K, Madala MC, Shah I, **Catanzaro JN**, Mughal M. Bivalirudin Use During Pulmonary Vein Isolation in a patient with heparin-induced thrombocytopenia. *Am J Ther*. 2018 Oct 4. doi: 10.1097/MJT.0000000000000857. [Epub ahead of print]

**Antoine S<sup>f</sup>, Percy R, Sattiraju S**. Fatal Paradoxical Emboli Captured in Transit through a Patent Foramen Oval. *European Heart Journal – Case Reports*. 2018;2(4):1-2

Sinner G, Omar HR, Lin YW, **Elayi SC**, Guglin ME. Response to cardiac resynchronization therapy in non-ischemic cardiomyopathy is unrelated to medical therapy. *Clin Cardiol*. 2019 Jan;42(1):143-150.

Ogunbayo GO, Pecha R, Misumida N, Hillerson D, Elbadawi A, Abdel-Latif A, **Elayi CS**, Messerli AW, Smyth SS. Relation of CHA<sub>2</sub>DS<sub>2</sub>VASC Score With Hemorrhagic Stroke and Mortality in Patients Undergoing Fibrinolytic Therapy for ST Elevation Myocardial Infarction. *Am J Cardiol*. 2019 Jan 15;123(2):212-217.

Suffredini J; Ruthland J; **Catanzaro J**; **Elayi CS**. Flecainide toxicity resulting in pacemaker latency and intermittent failure to capture. *Am J Case Rep*. 2019 (in press).

Miller JL, Chung ML, Etaee F, Hammash M, Thylén I, Biddle MJ, **Elayi SC**, Czarapata MM, McEvedy S, Cameron J, Haedtke CA, Ski CF, Thompson DR, Moser DK. Missed opportunities! End of life decision making and discussions in implantable cardioverter defibrillator recipients. *Heart Lung*. 2019 May 7. pii: S0147-9563(18)30600-9.

Ogunbayo GO, Pecha R, Misumida N, Goodwin E, Ayoub K, Hillerson D, Elbadawi A, Abdel-Latif A, **Elayi CS**, Messerli AW, Smyth SS. Outcomes of fibrinolytic therapy for patients with metastatic cancer and acute pulmonary embolism. *Pulm Pharmacol Ther*. 2019 Apr 5. pii: S1094-5539(19)30039-2.

Miller JL, Thylén I, **Elayi SC**, Etaee F, Fleming S, Czarapata MM, Lennie TA, Moser DK. Multi-morbidity burden, psychological distress, and quality of life in implantable cardioverter defibrillator recipients: Results from a nationwide study. *J Psychosom Res*. 2019 May;120:39-45.

Mullis AH, Ayoub K, Shah J, Butt M, Suffredini J, Czarapata M, Delisle B, Ogunbayo GO, Darrat Y, **Elayi CS**. Fluctuations in premature ventricular contraction burden can impact medical assessment and management. *Heart Rhythm*. 2019 Apr 17. pii: S1547-5271(19)30362-5.

Sun X, Song Z, **Soffer D**, **Pirris JP**. Transcatheter aortic valve-in-valv implantation for early failure of sutureless aortic bioprosthesis. *J Card Surg*. 2018 Apr;33(4):172-175. doi:10.1111/joc.13567.Epub 2018 Apr 2.

#### Book chapters:

Matthew J. Price, **Dominick J. Angiolillo**. Platelet Inhibitor Agents. In Eric Topol and Paul S. Teirstein (ed): *Textbook of Interventional Cardiology*. Seventh Edition. Elsevier, 2019.

### CLINICAL ACTIVITIES

Outpatient Activity	AY 18/19
Physician clinic visits	19,091
Cardiac ultrasounds	12,818
Cardiac nuclear studies	1,624
EKGs	52,187
Stress tests	2,385
Heart caths	2,2147
EP procedures	900
Cardiac rehab visits	2,965
Mitraclip	19
Watchman	14
TAVR/TEVR	49
*Attendings Only: Jacksonville Clinic= 7,698 Emerson= 1,137 St Marys = 2,978 Northside = 5,428	

### CONTRACTS AND GRANTS

Principal Investigator	Study Title	Project Period	Sponsor	Award Amount
Angiolillo, D	Platelet inhibitory profiles of prasugrel vs. ticagrelor in pts with CYP2C19	2017-2018	Scott R Mackenzie Foundation	\$250,000
Angiolillo, D	Implementation of CYP2C19 genotyping to guide antiplatelet therapy for patients undergoing cardiac catheterization at UF Health Jacksonville	2016-2019	NIH (U01-HG007269)	\$200,000

Angiolillo, D	A randomized comparison of platelet inhibition using a low maintenance dose of ticagrelor regimen vs standard dose clopidogrel in diabetes mellitus patients OPTIMUS	2018-2019	Astra Zeneca	\$415,603
Angiolillo, D	Impact of the PCSK9 inhibitor evolocumab on the pharmacodynamics effects of clopidogrel in patients with atherosclerotic	2017-2019	Amgen	\$543,126
Angiolillo, D	Impact of chronic kidney disease on the pharmacodynamics and pharmacokinetic effects of ticagrelor in patients/diabetes	2016-2018	Astra Zeneca	\$402,544
Angiolillo, D	Adjunctive Vorapaxar Therapy in patients with prior myocardial infarction treated with P2Y12 receptor prasugrel	2016-2019	Merck	\$415,716
Angiolillo, D	Pharmacodynamic Effects of Vorapaxar as an Add on antiplatelet therapy in post myocardial infarction patients	2016-2018	Merck	\$231,424
Angiolillo, D	Effects of EDOXaban on the cellular and protein phase of coagulation in patients with coronary artery disease on dual AntiPlatelet Therapy with aspirin and clopidogrel	2016-2018	Daiichi Sankyo	\$296,530



**DIVISION OF ENDOCRINOLOGY, DIABETES AND METABOLISM**  
ACADEMIC YEAR 2019 (7/18 - 6/19)**Highlights**

The Division of Endocrinology, Diabetes and Metabolism had a year of sustained change and development in all areas of the academic mission of the University of Florida. Clinically, major events included expansion of clinical services geographically and provision to a broader audience. The endocrinology faculty initiated in-vitro and clinical investigations into hormonal action with acquisitions of new faculty and personnel. Academically, the Division submitted multiple manuscripts, delivered multiple scholarly presentations and contributed to the university's educational mission.

**Patient care:** The Division provided inpatient and outpatient consultation at the University of Florida College of Medicine-Jacksonville campuses and Emerson Medical Plaza to faculty of the university and referring physicians in the northeast Florida/southern Georgia region and beyond. With the opening of the UF North campus, endocrinology services extended to a broader area of the First Coast. The core clinical faculty of the Division expanded to Dr. Joe Chehade, Dr. Marilu Jurado, Dr. Gunjan Gandhi, Dr. Arshag Mooradian, Dr. Leena Shahla and Dr. Kent Wehmeier. The Division addressed clinical endocrinology problems related to hypothalamus, pituitary, thyroid, pancreas, adrenal and sex hormone gland dysfunction as well as gender identity. Patients with metabolic disorders including diabetes mellitus, metabolic syndrome, obesity, anorexia, hypercholesterolemia, calcium and metabolic bone diseases such as osteoporosis and vitamin D deficiency were evaluated and treated. The Division's main clinical operations occurred at UF Endocrinology and Diabetes at Emerson Medical Plaza. The number and variety of consultations continued to rise. Patients were also evaluated at the UF Health-Jacksonville Ambulatory Care Center (ACC) and at the newly constructed UF Health North Hospital and Clinic primarily through the work of Dr. Gandhi and Dr. Shahla. Our faculty performed analyses of the glucose monitoring data, obtained by continuous glucose monitoring to make recommendations regarding diabetes management. Diabetes care has matured with the partnering of outpatient diabetes education with the Division of Endocrinology. Ashley Jeffords, MS, RD/LD, CDE provides onsite education at the UF Emerson location and UF North for diabetes management, carbohydrate counting and medical nutrition therapy (MNT.) Dr. Chehade, Dr. Jurado and Dr. Shahla utilized ultrasound guidance for the evaluation of patients with thyroid nodules, parathyroid neoplasia, lymph nodes, and thyroid cancer to provide comprehensive care to patients with nodular disease of the neck.

A unique collaboration with the UF College of Medicine-Jacksonville's Department of Oral Maxillofacial Surgery, Surgery, Radiology and Pathology has enhanced the care of patients with thyroid and parathyroid disease. Through the discussion and implementation of diagnostic and treatment protocols, the care of these patients has been standardized to better evaluate outcomes and focus on patients with more challenging management issues.

On the inpatient service, more patients were served by endocrinology consultation. The Division also presented evaluation and management techniques in the areas of diabetes, thyroid disease and osteoporosis to UF Family Practice clinics to facilitate optimal care of patients with these conditions.

**Education:** The Endocrinology fellowship continues to maintain its ACGME accreditation, under the direction of Program Director, Dr. Kent Wehmeier and Associate Program Director, Dr. Gunjan Gandhi. Dr. Priyanka Bikkina and Dr. Angela Landicho joined the Division in July 2017. Dr. Victoria Feng and Dr. Krista Gonzales began July 1, 2016 and have been exceptional and productive additions to the Division and completed their fellowships June 30, 2018. All four fellows have made substantive contributions to the clinical care, education and research mission of the Division. In resident physician education, Dr. Wehmeier continued as rotation director of relevant educational programs for Endocrinology. He is the

primary liaison between the Core Residency Program and the Division, and is a member of the Resident Education Committee. The faculty members and fellows participate in teaching rounds in the clinic and in conferences to enhance the experience of the rotating residents.

In the educational program of the University of Florida, Dr. Chehade, Dr. Gandhi, Dr. Jurado, Dr. Shahla and Dr. Wehmeier are in preceptor clinics in Endocrinology and coordinate lectures for the University of Florida medical students and residents in medicine and emergency medicine. The Division of Endocrinology Grand Rounds provides an avenue for speakers at UF Jacksonville and Gainesville to share knowledge and enhance collaboration between various disciplines at UF. Dr. Chehade, Dr. Gandhi, Dr. Haas and Dr. Wehmeier were chosen to receive the 2019 University of Florida-College of Medicine's Exemplary Teachers Award under Education.

**Research:** Strides have been made in making clinical research more attractive to industry and to potential subjects. Under the guidance of Division members, the awards and numbers of subjects have continued to grow. Additional research staff has been added to grow the Division's efforts. The research has involved the use of devices to control diabetes mellitus, pharmacologic agents for glucose management, diabetic neuropathy, non-alcoholic fatty liver disease and metabolic bone disease. Dr. Joe Chehade is also spearheading a clinical trial in the new Jacksonville Aging Studies Center or JAX-ASCENT. This site will serve as a hub for aging research in the Northeast Florida/Southeast Georgia area. The basic science research lab, under the direction of Dr. Michael Haas, continues to be a place of learning and scholarly activity. Investigations regarding the effects of multiple hormones on the expression of the most important protein in the high density lipoprotein (HDL) particle, Apo AI, and the involvement of endoplasmic reticulum (ER) stress and oxidative stress in coronary artery disease continue to reveal critical insights. The Division had a strong showing at the University of Florida College of Medicine-Jacksonville Research Day. All four fellows had poster presentations displaying their research at national meetings, including the American Association of Clinical Endocrinology and the Endocrine Society. Four investigator-initiated clinical trials are also in the process of studying topics in thyroid disease and macronutrient metabolism. Dr. Krista Gonzales' research highlighting nicotine and ER stress was selected for platform presentation and won 5<sup>th</sup> place during UF Research Day.

**Service:** Dr. Wehmeier has chaired the Search Committee for Gastroenterology Chief and served on the Search Committee for the Department Chairman of Ophthalmology and Dr. Chehade has served on the Search Committee for the Chief of Pulmonary Medicine & Critical Care. Leading the charge for better inpatient diabetes care, Dr. Gandhi chairs the Diabetes Steering Committee. This multidisciplinary body comes together to discuss common issues in glucose control. Strategies to improve outcomes are discussed and implemented.

**Philanthropy:** The Division members have been the recipients of many gifts. In the spirit of giving back, the members have contributed their time, effort and resources to the underserved and to children in Jacksonville, as well as overseas.

## LISTING OF FACULTY MEMBERS

**Joe Chehade, M.D., Professor**

Medical School  
Internship/residency  
Subspecialty training

St. Joseph University School of Medicine, Beirut-Lebanon  
Staten Island University Hospital  
Saint Louis University School of Medicine

**Gunjan Gandhi, M.D., MSc, Associate Professor**

Medical School  
Internship/residency  
Subspecialty training  
Post-Graduate training

Maharaja Sayajirao University, Baroda India  
University of Illinois College of Medicine  
Mayo Clinic, Rochester  
Mayo Clinic, Rochester – Masters in Biomedical Research

**Michael Haas, Ph.D., Research Associate Professor**

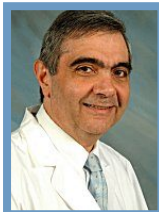
Graduate School  
Post-Graduate training

University of Nebraska Medical Center  
McArdle Laboratory for Cancer Research

**Marilu M. Jurado Flores, M.D., Assistant Professor**

Medical School  
Internship/residency  
Subspecialty training

Catholic University of Santiago De Guayaquil, Guayas Ecuador  
University of Miami Hospital and Clinics  
University of Florida College of Medicine-Jacksonville

**Arshag D. Mooradian, M.D., Professor and Chairman, Department of Medicine**

Medical School  
Internship/residency  
Subspecialty training

American University of Beirut  
American University of Beirut  
University of Minnesota

**Leena Shahla, M.D., Assistant Professor**

Medical School  
Internship/residency  
Subspecialty training

Al-Baath University, Homs Syria  
New York Medical College  
University of Massachusetts Medical School

**Kent Wehmeier, M.D., Professor and Division Chief**

Medical School  
Internship/residency  
Subspecialty training

University of Missouri-Columbia  
Barnes-Jewish Hospital, Washington University  
Saint Louis University School of Medicine

## PUBLICATIONS

**Haas MJ, Jurado-Flores M**, Hammoud R, Feng V, Gonzales K, Onstead-Haas L, **Mooradian AD**. Inhibition of pro-inflammatory cytokine secretion by select antioxidants in human coronary artery endothelial cells. *International Journal for Vitamin and Nutrition Research*. 2019 Mar 7:1-10.

**Mooradian AD, Haas MJ**, Onstead-Haas L, Tani Y, Iida T, Tokuda M. Naturally occurring rare sugars are free radical scavengers and can ameliorate endoplasmic reticulum stress. *International Journal for Vitamin and Nutrition Research* 2019 Feb 26:1-11.

**Mooradian AD**. Evidence based cardiovascular risk management in diabetes. *American Journal of Cardiovascular Drugs* 2019 Feb 22. doi: 10.1007/s40256-019-00336-6

**Mooradian AD**. In search for an alternative to sugar to reduce obesity. *International Journal for Vitamin and Nutrition Research*. 2019 Feb 12:1-5. doi: 10.1024/0300-9831/a000531

**Haas MJ, Jurado-Flores M**, Hammoud R, Chen V, Gonzales K, Onstead-Haas L, **Mooradian AD**. The effects of known cardio protective drugs on pro-inflammatory cytokine secretion from human coronary artery endothelial cells. *American Journal of Therapeutics* 26(3):e321–e332, 2019.

Siddique A, Murphy TP, Naeem SS, Siddiqui EU, Pencina KM, McEnteggart GE, Sellke FW, Dworkin LD, (**Mooradian AD site PI**). Relationship of mildly increased albuminuria and coronary artery revascularization outcomes in patients with diabetes. *Catheter Cardiovasc Interv*. 93(4): E217-E224, 2019.

Rezende PC, Everett BM, Brooks MM, Vlachos H, Orchard TJ, Frye RL, Bhatt DL, Hlatky MA. (**Mooradian AD site PI**). Hypoglycemia and elevated troponin in patients with diabetes and coronary artery disease. *J Am Coll Cardiol*. 72:1778-1786, 2018.

Mori M, Shioda K, Bin Mahmood SU, Mangi AA, Yun JJ, Geirsson A. (**Mooradian AD site PI**). Dual antiplatelet therapy versus aspirin monotherapy in diabetics with stable ischemic heart disease undergoing coronary artery bypass grafting. *Ann Cardiothorac Surg*. 7:628-635, 2018.

**Haas MJ, Jurado-Flores M**, Hammoud R, Plazarte G, Onstead-Haas L, Wong NCW, **Mooradian AD**. Regulation of apolipoprotein A-I gene expression by the histamine H1 receptor: Requirement for NF-kappaB. *Life Sciences* 208:102-110, 2018.

**Mooradian AD**. Evidence based management of diabetes in older adults. *Drugs & Aging* 35:1065-1078, 2018

**Mooradian AD**. Can sugar substitutes reduce risk of obesity? *Public Health Post*, September 28, 2018.  
<https://www.publichealthpost.org/research/can-sugar-substitutes-reduce-risk-of-obesity/>

**Abstracts/Presentations:**

Bikkina P, Landicho AM, Onstead-Haas L, **Haas MJ**, and **Mooradian AD**. Differential effects of COX2 inhibitors on the unfolded protein response in primary human coronary artery endothelial cells. Poster presentation at American Association of Clinical Endocrinologists Annual Meeting, Los Angeles, CA, May 2019.

Bikkina P, Gonzales K, **Jurado-Flores M**. Case of recurrent hyperparathyroidism secondary to ectopic parathyroid tissue requiring multiple surgeries. Poster presentation at American Association of Clinical Endocrinologists Annual Meeting, Los Angeles, CA, May 2019.

Landicho AM, Feng V, Bikkina P, Gonzales K, Onstead-Haas L, **Haas MJ**, and **Mooradian AD**. TFEB-Mediated inhibition of endoplasmic reticulum stress in human coronary artery endothelial cells. Poster presentation at American Association of Clinical Endocrinologists Annual Meeting, Los Angeles, CA, May 2019.

Parekh S, **Chehade J**. Mom and Baby Safe: Offlabel Use of Auto Mode on Medtronic 670G. Poster presentation at American Association of Clinical Endocrinologists Annual Meeting, Los Angeles, CA, May 2019.

Parekh S, **Wehmeier K**. Unusual Presentation of Adult Onset Juvenile Hypophosphatasia. Poster presentation at American Association of Clinical Endocrinologists Annual Meeting, Los Angeles, CA, May 2019.

Kalidas P, Bikkina P, Landicho AM, Parekh S, Onstead-Haas L, **Haas MJ**, and **Mooradian AD**. The effects of select GLP1R agonists and SGLT2 inhibitors on the unfolded protein response in primary human coronary artery endothelial cells. Poster presentation at: Endocrine Society, New Orleans, LA, March 2019.

**Jurado-Flores M**. Risk and Benefits of Newer Medications in Diabetes Mellitus. UF Internal Medicine Update 2019. Jacksonville, FL, February 2019.

## HONORS AND AWARDS

Joe Chehade, MD	University of Florida Exemplary Teacher Award 2019
Gunjan Gandhi, MD	University of Florida Exemplary Teacher Award 2019
Michael Haas, PhD	University of Florida Exemplary Teacher Award 2019
Kent Wehmeier, MD	University of Florida Exemplary Teacher Award 2019

## CLINICAL ACTIVITIES

	AY 18/19
<b>Inpatient Activity</b>	
Initial Inpatient Encounters	612
<b>Outpatient Activity</b>	
Clinic Visits	10,339
Thyroid Biopsies	285

## CONTRACTS AND GRANTS

Principal Investigator	Study Title	Project Period	Sponsor	Award Amount
Wehmeier, K	A Phase 2b, Multicenter, Multinational, Double-blind, Dose-finding Study, incorporating an open label sub-study, in Adult Patients with Type I, III or IV Osteogenesis Imperfecta Treated with setrusumab (BPS804)	05/2017 - 12/2021	Mereo	\$32,591.97
Chehade, C	A Randomized, Double-blind, Placebo-controlled, Parallel-group, Multicenter Study to Evaluate the Effect of Efglenatide on Cardiovascular Outcomes in Type 2 Diabetes Patients at High Cardiovascular Risk	06/2018 - 05/2019	Sanofi	\$5,615.38
Chehade, C	A Phase III, Double-blind, Randomized, Placebo-Controlled, Multi-center Study To Assess The Safety and Efficacy of VM202 in Subjects with Painful Diabetic Peripheral Neuropathy	11/2016 - 12/2019	Viromed	\$178,696
Chehade, C	Testosterone Replacement therapy for Assessment of long-term Vascular Events and efficacy ResponSE in hypogonadal men (TRAVERSE) Study	08/2018 - 08/2023	AbbVie	\$484,455
Chehade, C	A Randomized, Double-blind, Placebo-controlled, Parallel-group, Multicenter Study to Demonstrate the Effects of Sotagliflozin on Cardiovascular and Renal Events in Patients with Type 2 Diabetes, Cardiovascular Risk Factors and Moderately Impaired Renal Function	04/2018 - 04/2022	Sanofi	\$44,558.14



**DIVISION OF GASTROENTEROLOGY**  
**ACADEMIC YEAR 2019 (7/18 – 6/19)****Highlights**

Gastroenterology Division has built an inter-disciplinary team of faculty, advanced practitioners and nurses. Our faculty members were Dr. James Scolapio, Dr. Miguel Malespin, Dr. Faisal Bukeirat, Dr. Ron Schey, Dr. Robert Bass, Dr. Paul Sievert and Dr. Peter Ghali. The allied health professionals included Victor (Pat) Nasrallah, Kellie Leis, Rhonda Broughton, Katelyne Cote, as well as our nurse William Ecker. Our Division responded well to challenges in personnel turnover and managed to increase our service lines, specifically with regards to therapeutic endoscopy and upper gastrointestinal tract disease. Working closely with our surgical colleagues, we now have one of the premier upper GI tract disease centers in the state. Our endoscopic ultrasound activity has more than doubled and we have added new diagnostic tools such as EndoFLIP and Digitrapper, which have made us a referral destination for a wide catchment area. Our hepatology program has also more than doubled in activity with a much closer integration with the Gainesville transplant group. Our Fellowship program remains strong and is academically productive with one of our fellows, Dr. Ammar Nassri, receiving a Young Investigator national award at the prestigious Digestive Diseases Week. We would like to thank every team member for going the extra mile to take care of our patients and each other.

**Patient care:** The patient care aspect of our academic mission is pursued at the following locations: UF Health North with general GI clinics and endoscopy, Emerson campus, where we provide general gastroenterology, inflammatory bowel disease, and hepatology services, Towers clinic with general gastroenterology and hepatology clinics, UF Beaches with general gastroenterology clinic. Endoscopy is performed at three clinical sites: UF Health Downtown, UF Health North, and Jacksonville Beach Surgery Center. Inpatient consult services are provided at UF Health Downtown as well as UF Health North. Our mission is to have timely patient access to top quality patient care with specific attention to reduced patient wait times and increased access to high-quality gastroenterology and hepatology services in any of our locations.

**Education:** Dr. Ghali has taken over as the Program Director of our fellowship training program. We have maintained a high quality of trainees' satisfaction based on the 2017-2018 ACGME survey which showed that our program overall fellow satisfaction is above the national average with 100% evaluating the program as positive or very positive. 100% of the gastroenterology faculty also evaluated the program as excellent or good. Our fellows' board pass rate is 100%. Our priority remains recruiting gastroenterology fellows with a proven track record of clinical research as well as commitment to superb patient care, interpersonal skills and professionalism. We continue to be very active at the Jacksonville Gut Club quarterly meetings. This educational venue is very important to our division's presence in the community. This academic year, we focused on the issues of physician well-being and mental health. We discussed the challenges with our fellows and we were all involved in improving the processes to promote physician well-being.

**Research:** All faculty members have been productive in scholarly activities over the past academic year. The Division produced fifteen peer-reviewed published manuscripts, nine abstract presentations, and two book chapters. The GI faculty have given multiple presentations at local, regional, national, and international meetings. The Division now has twelve funded research protocols and was able to generate over \$650,000 in grants last year.

**Robert Bass, M.D., Assistant Professor**

Medical School  
Internship/residency  
Subspecialty training

Medical College of Georgia  
University of South Alabama  
University of Florida – Jacksonville

**Faisal Bukeirat, M.D., Associate Professor, Director of Endoscopy**

Medical School  
Internship/residency  
Subspecialty training

University of Jordan, Amman, Jordan  
New York Medical College, Bronx NY  
Albany Medical College, Albany NY

**Peter Ghali, M.D., Professor, Program Director and Division Chief, Gastroenterology**

Medical School  
Internship/residency  
Subspecialty training  
Subspecialty training

McGill University, Montreal, Canada  
McGill University, Montreal, Canada  
McGill University, Montreal, Canada  
Mayo Graduate School of Medicine – Rochester, MN

**Ron Schey, M.D., Professor, Director Neurogastroenterology and Esophageal Program**

Medical School  
Internship/residency  
Subspecialty training

Sackler School of Medicine, Tel-Aviv University, Israel  
Meir Medical Center, Kfar Saba, Israel  
Wolfson Medical Center, Holon, Israel

**Bruno De Souza Ribeiro, M.D., Assistant Professor**

Medical School  
Internship/residency  
Subspecialty training  
Subspecialty training

Santa Casa de Sao Paulo, Brazil  
Federal University of Sao Paulo, Brazil  
Sirio Libanes Hospital, Sao Paulo, Brazil  
California Pacific Medical Center, San Francisco, CA

**James Scolapio, M.D., Professor and Associate Chair**

Medical School  
Internship/residency  
Subspecialty training

Marshall University School of Medicine  
Mayo Graduate School of Medicine – Rochester, MN  
Mayo Graduate School of Medicine – Rochester, MN

**Paul Sievert, M.D., Assistant Professor**

Medical School  
Internship/residency  
Subspecialty training

University of Miami  
Medical College of Virginia  
University of Florida – Jacksonville



## PUBLICATIONS

Lawitz E, Gane E, Feld JJ, Buti M, Foster GR, Rabinovitz M, Burnevich E, Katchman H, Tomasiewicz K, Lahser F, Jackson B, Shaughnessy M, Klopfer S, Yeh WW, Robertson MN, Hanna GJ, Barr E, Platt HL; C-BREEZE-2 Study Investigators. Efficacy and Safety of a Two-Drug Direct-Acting Antiviral Agent Regimen Ruzasvir 180 mg and Uprifosbuvir 450 mg for 12 Weeks in Adults with Chronic Hepatitis C Virus Genotype 1, 2, 3, 4, 5, or 6. *J Viral Hepat.* 2019 May 20. doi: 10.1111/jvh.13132. [Epub ahead of print]

Malespin M, Harris C, Kanar O, Jackman K, Smotherman C, Johnston A, Ferm J, de Melo SW Jr, **Scolapio JS**, Nelson DR, Cotler SJ. Barriers to treatment of chronic hepatitis C with direct acting antivirals in an urban clinic. *Ann Hepatol.* 2019 Mar - Apr;18(2):304-309.

Malespin M, Nassri A. Endocrine Diseases and the Liver: An Update. *Clinics in Liver Disease.* Volume 23, Issue 2. March 2019.

Parkman HP, Wilson LA, Hasler WL, McCallum RW, Sarosiek I, Koch KL, Abell TL, **Schey R**, Kuo B, Snape WJ, Nguyen L, Farrugia G, Grover M, Clarke J, Miriel L, Tonascia J, Hamilton F, Pasricha PJ. Abdominal Pain in Patients with Gastroparesis: Associations with Gastroparesis Symptoms, Etiology of Gastroparesis, Gastric Emptying, Somatization, and Quality of Life. *Dig Dis Sci.* 2019 Mar 9.

Leopold A, Yu D, Bhuta R, Kataria R, Lu X, Jehangir A, Harrison M, Friedenber F, Malik Z, **Schey R**, Parkman HP. Multiple Rapid Swallows (MRS) Complements Single-Swallow (SS) Analysis for High-Resolution Esophageal Manometry (HREM). *Dig Dis Sci.* 2019 Feb 25. [Epub ahead of print]

Nassri AB, Alkhasawneh A, **Scolapio JS**, Malespin MH, **Ribeiro BS**. Safety and efficacy of over-the-scope clip-assisted full thickness resection of duodenal subepithelial tumors: A case report. *World J Gastrointest Endosc.* 2019 Feb 16;11(2):168-173.

Field J, Wasilewski M, Bhuta R, Malik Z, Cooper J, Parkman HP, **Schey R**. Effect of Chronic Domperidone Use on QT Interval: A Large Single Center Study. *J Clin Gastroenterol.* 2019 Feb 1. [Epub ahead of print]

Nassri AB, Muenyi V, Alkhasawneh A, **Ribeiro BS**, **Scolapio JS**, Malespin M, de Melo SW Jr. Ipilimumab and Nivolumab induced steroid-refractory colitis treated with infliximab: A case report. *World J Gastrointest Pharmacol Ther.* 2019 Jan 21;10(1):29-34.

Saroli Palumbo C, Restellini S, Chao CY, Aruljothy A, Lemieux C, Wild G, Afif W, Lakatos PL, Bitton A, Cocciolillo S, **Ghali P**, Bessisow T, Sebastiani G. Screening for Nonalcoholic Fatty liver Disease in Inflammatory Bowel Diseases: A Cohort Study Using Transient Elastography. *Inflamm Bowel Dis.* 2019 Jan 1;25(1):124-133

Alkhasawneh A, Nassri AB, John I. Dedifferentiated Melanoma with Expression of Cytokeratin and GATA3 in a Patient with History of Breast Carcinoma. *The American Journal of Dermatopathology.* Dec 2018.

Benmassaoud A, Nitulescu R, Pembroke T, Halme AS, **Ghali P**, Deschenes M, Wong P, Klein MB, Sebastiani G. Liver-related events in HIV-infected persons with occult cirrhosis. *Clin Infect Dis.* 2018 Dec [Epub ahead of print]

Thomas A, **de Souza Ribeiro B**, Malespin M, de Melo SW Jr. Botulinum Toxin as a Treatment for Refractory Gastroparesis: a Literature Review. *Curr Treat Options Gastroenterol.* 2018 Dec;16(4):479-488.

Sterling JL, **Schey R**, Malik Z. The Role of Botulinum Toxin Injections for Esophageal Motility Disorders. *Curr Treat Options Gastroenterol.* 2018 Dec;16(4):528-540.

Parkman HP, Yamada G, Van Natta ML, Yates K, Hasler WL, Sarosiek I, Grover M, **Schey R**, Abell TL, Koch KL, Kuo B, Clarke J, Farrugia G, Nguyen L, Snape WJ, Miriel L, Tonascia J, Hamilton F, Pasricha PJ, McCallum RW. Ethnic, Racial, and Sex Differences in Etiology, Symptoms, Treatment, and Symptom Outcomes of Patients With Gastroparesis. *Clin Gastroenterol Hepatol.* 2018 Nov 4. pii: S1542-3565(18)31217-5. doi: 10.1016/j.cgh.2018.10.050. [Epub ahead of print]

Zoll B, Zhao H, Edwards MA, Petrov R, **Schey R**, Parkman HP. Outcomes of surgical intervention for refractory gastroparesis: a systematic review. *J Surg Res.* 2018 Nov;231:263-269.

**Presentations:**

Nassri AB, Carranza M, Muftah M, Smotherman C, Malespin, **Ghali P**. Novel Noninvasive Inflammatory- Nutritional Biomarkers for Detecting Fibrosis in Non-Alcoholic Fatty Liver Disease. Poster Presentation at Digestive Disease Week , San Diego, CA, May 2019

Nassri AB, Stemborski L, Attarha B, Harris C, **Schey R**. Correlation of Novel Inflammatory – Nutritional Biomarkers with High Resolution Manometry parameters and Distal Latency. Poster presentation, Digestive Disease Week, San Diego, CA, May 2019

Nassri AB, Smotherman C, **Schey R, Ghali PM**. Colonoscopy after holidays is an independent predictor for inadequate bowel preparation. Oral presentation, Digestive Disease Week, San Diego, CA, May 2019

Lis S, Vachhani H, Tanner S, Leopold AR, Zitomer S, Bhuta RV, **Schey R**, Malik ZA, Parkman HP. Vascular Pressure Bands on High Resolution Manometry with Impedance (HREMI) studies: Description, Prevalence and Clinical Significance, Poster Presentation, Digestive Disease Week, San Diego, CA, May 2019

Tanner S, Vachhani H, Harrison MJ, Malik ZA, **Schey R**, Parkman HP. Impact of patient Position on Esophageal Motility Disorders Using High Resolution Esophageal Manometry. Poster Presentation, Digestive Disease Week, San Diego, CA, May 2019

Krahn T1, Sapir-Pichhadze R1, Kronfli N1, Falutz J1, Guaraldi G2, Lebouche B1, Szabo J1, Klein MB1, Wong P1, Deschenes M1, Ghali P1, and Sebastiani G1. (The SHIVER research group). Vitamin E Is an Effective Treatment for NASH in people living with HIV: The CTN-PT 024 Trial. Oral Presentation, CLM meeting 2019. May 2019, Montreal QC Canada

Shengir, Krishnamurthy, **Ghali** et al. Prevalence and associated factors of non-alcoholic fatty liver disease in women with polycystic ovary syndrome: A prospective (FLIPCOS) study and systematic review. Poster presentation at IDIGH meeting, April 2019, Montreal QC Canada

Krahn T1, Sapir-Pichhadze R1, Kronfli N1, Falutz J1, Guaraldi G2, Lebouche B1, Szabo J1, Klein MB1, Wong P1, Deschenes M1, **Ghali P1**, and Sebastiani G1. (The SHIVER research group). NONALCOHOLIC FATTY LIVER DISEASE AND LIVER FIBROSIS INCREASE THE RISK OF INCIDENT CARDIOMETABOLIC COMORBIDITIES AND ALL-CAUSE MORTALITY IN PEOPLE LIVING WITH HIV: A PROSPECTIVE COHORT STUDY. Poster presentation, CROI 2019 Conference on Retroviruses and opportunistic infections – March 2019, Seattle WA.

Nassri AB, Muftah M, Fialho A, Fialho A, **Scolapio J, Ribeiro B**, Malespin M, De Melo S. Novel Inflammatory-Nutritional Biomarkers as Predictors of Histological Activity in Crohn's Disease. Am J Gastroenterol. 2018 Oct 25. Poster Presentation, American College of Gastroenterology (ACG) 2018 Annual Scientific Meeting

**Book Chapters and Monographs:**

**Scolapio J**, in Netter's Gastroenterology. 3rd Edition. 2019. Publisher - Elsevier; Dietary and Nutritional Assessment. Chapter 184 – 192. Dietary and Nutritional Assessment, Macronutrients and Energy, Micronutrient and Vitamin Deficiency, Enteral Nutrition, Dietary Fiber, Parenteral Nutrition, Malnutrition, Surgical Treatment of Obesity. Gastrointestinal Diseases Related to Nutrition.

Lee, Rao, Ghoshal: in Clinical & Basic Neurogastroenterology & Motility. Nassri AB, **Schey R**. Chapter 11: Deglutition and Oropharyngeal Dysphagia. 2019. Elsevier. In Press.

**CLINICAL ACTIVITIES**

<b>Inpatient Activity</b>	<b>AY 18/19</b>
Initial IP Encounters	1657
UF Health Jacksonville Inpatient Procedures	786
Baptist Beaches Inpatient Procedures	15
UF North Inpatient Procedures	227
<b>Outpatient Activity</b>	
Clinic Visits	12254
UF Health Jacksonville Outpatient Procedures	4581
Baptist Beaches Outpatient Procedures	745
Jacksonville Beach Surgery Center Outpatient Procedures	426
Jacksonville Surgery Center	1096
UF North Outpatient Procedures	2613

## CONTRACTS AND GRANTS

<b>Local Principal Investigator</b>	<b>Study Title</b>	<b>Project Period</b>	<b>Sponsor</b>	<b>Award Amount</b>
Ghali P	HCV TARGET - Hepatitis C Therapeutic Registry and Research Network- A Longitudinal, Observational Study	3/22/2016 - present	University of Florida (David Nelson, PI)	\$115,955
Ghali P	TARGET-NASH - A 5-year Longitudinal Observational Study of Patients with Nonalcoholic Fatty Liver Disease or Nonalcoholic Steatohepatitis	1/8/2017 - present	Target PharmaSolutions, Inc.	\$63,251
Ghali P	TARGET HCC - A 5-year Longitudinal Observational Study of the Natural History and Management of Patients with Hepatocellular Carcinoma -	1/3/2017 - present	Target PharmaSolutions, Inc.	\$12,064
Ghali P	TARGET IBD - A 5-year Longitudinal Observational Study of Patients Undergoing Therapy for Inflammatory Bowel Disease	10/10/2017 - present	Target PharmaSolutions, Inc.	\$35,609
Ghali P	PRIORITIZE - A Pragmatic, Randomized Study of Oral Regimens for Hepatitis C: Transforming Decision---Making for Patients, Providers, and Stakeholders	3/16/2017 - present	University of Florida (Giuseppe Morelli, PI)	\$58,450
Ghali P	REGENERATE - Randomized Global Phase 3 Study to Evaluate the Impact on NASH with FibRosis of Obeticholic Acid TreatmEnt	12/14/2016 - present	Intercept Pharmaceuticals, Inc.	\$174,562
Ghali P	STELLAR-3 - A Phase 3, Randomized, Double-Blind, Placebo-Controlled Study Evaluating the Safety and Efficacy of Selonsertib in Subjects with Nonalcoholic Steatohepatitis (NASH) and Bridging (F3) Fibrosis	6/28/2017 - present	Gilead Sciences	\$56,709
Malespin M	DAA salvage - A Phase 3b, Multi-Center, Randomized, Open-Label, Pragmatic Study of Glecaprevir/Pibrentasvir (G/P) +/- Ribavirin for GT1 Subjects with Chronic Hepatitis C Previously Treated with an NS5A Inhibitor + Sofosbuvir Therapy	5/30/17 – 11/13/18	AbbVie, Inc. (David Nelson, PI)	\$23,688
Malespin M	SEMA-NASH-Investigation of efficacy and safety of three dose levels of subcutaneous semaglutide once daily versus placebo in subjects with non-alcoholic steatohepatitis: A 72-week randomized, double-blind, placebo-controlled, six-armed parallel group, multi-centre, multinational trial	4/26/18-12/28/18	Novo Nordisk	\$22,234
Ghali P	REVERSE-A Phase 3, Double-Blind, Randomized, Placebo-Controlled, Multicenter Study to Evaluate the Efficacy and Safety of Obeticholic Acid in Subjects with Compensated Cirrhosis due to Nonalcoholic Steatohepatitis	7/19/18-present	Intercept Pharmaceuticals, Inc.	\$25,900
Malespin M	ATLAS- A Phase 2, Randomized, Double-Blind, Placebo-Controlled Study Evaluating the Safety and Efficacy of Selonsertib, GS-0976, GS-9674, and Combinations in Subjects with Bridging (F3) Fibrosis or Compensated Cirrhosis (F4) due to Nonalcoholic Steatohepatitis (NASH)	5/29/18-10/29/18	Gilead Sciences	\$14,805

**DIVISION OF GENERAL INTERNAL MEDICINE**  
**ACADEMIC YEAR 2019 (7/18- 6/19)**

## Highlights

The division continues a robust inpatient and outpatient practice and is an integral part of the educational experience for the Internal Medicine residency.

**Patient Care:** The Division of General Internal Medicine is comprised of 18 members, including the two chief medical residents. All full time faculty are certified by the American Board of Internal Medicine. The clinical care provided by members of the division include the provision of inpatient care as the attending for the four inpatient teaching services and an inpatient Internal Medicine consultation service, including medical evaluation of patients admitted to the inpatient Psychiatry service. Drs. Brittany Lyons and Win Aung, who oversee the medicine consultation service, are trained in bedside ultrasound guided procedures. The procedural service is available to other services to ensure the provision of safe care. It also serves as an excellent educational experience for our residents.

The group has a busy outpatient practice offering services at three locations: the Ambulatory Care Center (ACC) at UF Health Jacksonville, the UF Internal Medicine Clinic at Emerson Multispecialty Clinic and the General Internal Medicine Clinic at UF Health North. Based on patient satisfaction, the physicians in the group are considered excellent clinicians. In addition to the excellent physicians in the group, the outpatient primary care practices are certified as NCQA Level 3 Patient Centered Medical Homes. Our outpatient practices offer two unique clinical initiatives. The *PAIDD* (Program for Adults with Intellectual and Developmental Disability) clinic established in 2013 provides primary care services and care coordination to adults with special needs who are unable to manage their health independently. *PAIDD* provides care to over 175 adults with intellectual and developmental disabilities. RN care coordination of these patients has been supported by a grant from the Riverside Foundation. The second unique clinical initiative is acupuncture services offered by Dr. Alan Halperin. With the rise of opioid related illness and mortality, alternative treatment options for management of pain is critical. Dr. Halperin's acupuncture clinic offers a viable alternative.

The division has two faculty members with training in hospice and palliative care: Dr. Ravindra Maharaj and Dr. Win Aung. Dr. Maharaj also holds a certificate of added qualifications in geriatrics. Along with a growing outpatient geriatric practice, Dr. Maharaj offers hospice and palliative care services to our inpatient services. He is providing a much needed service, as well as education, on the role of palliative care and hospice in the care of our patients.

**Education:** The division provides faculty supervision of residents on the four general internal medicine inpatient teaching services, the inpatient medicine consultation and procedural service and geriatrics and hospice and palliative care. In addition, the members of the division provide faculty supervision and mentoring of all categorical medicine residents in their outpatient continuity practice and urgent care clinics. Members of the division participate in morning report and present at the noon conference core curriculum series held daily, as well as a Friday afternoon board review.

Dr. Jeff House serves as Program Director for the Internal Medicine Residency Program and Drs. Elisa Sottile and Carlos Palacio are the Associate Program Directors for the training program. The GME leadership mentors residents in their scholarly work and each year, the number of posters, abstracts, presentations and manuscripts increase. Dr. House has developed a unique rotational and curricular experience for the PGY2 residents that immerse them in quality and safety. This educational experience is well received by the residents and has resulted in quality improvement projects and scholarly activity. Dr. Sottile also serves as the Clerkship Director for medical students from Gainesville who rotate on the Internal Medicine service (inpatient and outpatient).

Dr. Win Aung has developed a bedside ultrasound curriculum for residents as well as a weeklong immersion in bedside ultrasound course for the interns in the residency program.

Drs. Masri and Sottile serve as peer reviewers for the University of Florida College of Medicine-Jacksonville faculty development program. Dr. Sottile also serves as a facilitator and is the co-developer of the "Teaching Residents/Fellows to Teach"-a 6-8 hour intradepartmental seminar offered each year at the University of Florida College of Medicine-Jacksonville to residents and fellows.

The faculty in the division serve as program directors, speakers and workshop facilitators for the annual Update in Internal Medicine. This CME conference is an excellent opportunity for local and regional healthcare providers to obtain CME and learn the most current information on interesting and hot topics.

The division serves as an integral part of the education program for 3<sup>rd</sup> and 4<sup>th</sup> year medical students, as well as physician assistant students, from the University of Florida. Members of the division serve as preceptors for students in both the inpatient setting as well as in our outpatient practice. Student evaluations of their experience are excellent and are reflected in the number of exemplary teacher awards given to faculty within the division each year.

**Quality:** Dr. Jeff House coordinates monthly M&M/QA and QI for the training program. He is also the Associate Chair of Medicine for Quality and Education. He is the Chair of the Medical Performance Improvement Committee (MPIC) and is a member of the Performance Improvement Committee-the institutional body that oversees quality and safety for the UF Health Jacksonville campus. A quality improvement team, comprised of internal medicine faculty and residents along with hospital performance improvement staff, reviewed readmission rates for patients with chronic lung disease. The results of the team's work and the processes implemented led to a significant reduction in readmissions for this patient population and the process has been rolled out hospital wide. The division continues to address timeliness of discharges and through put, as well as identify opportunities to continue to improve our patient satisfaction. The division is currently working with the hospital's case management team to implement a number of processes that we anticipate will assist us in reducing the length of stay as well as reduce readmissions. In the outpatient setting, Dr. Palacio coordinates a number of quality improvement projects with the residents to look at access, show rates and whether preventive care and screening guidelines are being met. The use of quality dashboards in EPIC has allowed our practice to improve its cancer screening and immunizations and to reduce care gaps in our patient population. In addition, based on these reviews and changes in screening recommendations, the quality dashboard has been updated to include lung cancer screening with low dose CT for appropriate individuals.

**Research:** Research in the division varies among the faculty. The development of the bedside ultrasound curriculum and the quality improvement/patient safety block rotation have led to poster presentations and other opportunities for educational scholarship. Many of the faculty mentor residents in their research projects and have assisted them in submitting and being awarded grants from the Dean's Fund for Research. The division continues to be productive as demonstrated by the publication list below.

**Future Directions:** To meet the primary care needs of Jacksonville, we expanded our practice to North Jacksonville and our practice continues to grow there, meeting the needs of this sector of Jacksonville and Duval and Nassau Counties. Our practice at the Southside Multispecialty Clinic also continues to grow and receives referrals from our specialty colleagues who practice at that location as well. The PAIDD clinic for adults with intellectual and developmental disabilities continues to grow and provides a unique service to this special needs population.

Dr. Sottile is working with our colleagues in Anesthesiology to develop a preoperative optimization clinic where internists and anesthesiologists will work together to evaluate and manage patients who will undergo elective surgeries using evidence based guidelines.



The division, along with our residents will have the opportunity to develop performance improvement initiatives that will lead to improved patient care and safety and result in the preparation of scholarly works. Currently the faculty and residents are developing a handoff tool that will be used for patients who are transitioning from the critical care unit to the floor to ensure that a safe transition occurs. An additional quality improvement initiative that is in the beginning stages is the use of individual resident quality dashboards to improve patient care. The dashboard will be used as an educational tool that links metrics to evidence based practice with learning modules and reflective learning.

### LISTING OF FACULTY MEMBERS



**Win Aung, M.D. Assistant Professor**

Medical School  
Internship/residency

Institute of Medicine, Myanmar  
Lutheran Medical Center



**Lori A. Bilello, Ph.D., M.B.A., M.H.S., Assistant Professor, Associate Director, CHEQR**

PhD Health Services Research  
Master of Business Administration  
Master of Health Science

University of Florida  
University of Florida  
University of Florida



**Linda Edwards, M.D., Associate Professor, Associate Chair and Division Chief**

Medical School  
Internship/residency

East Carolina University  
Jacksonville Health Education Programs



**Malcolm Foster, M.D., Professor Emeritus**

Medical School  
Internship/residency  
Subspecialty training

Bowman Gray School of Medicine  
University of Florida, Gainesville  
University of Florida, Gainesville (Infectious Disease)



**Shiva Gautam, Ph.D., Professor**

PhD Statistics

University of Texas at Dallas



**Maria Gutierrez, M.D., Assistant Professor**

Medical School  
Internship/residency

Ross University School of Medicine  
University of Florida, Jacksonville



**Alan Halperin, M.D., Professor**

Medical School  
Internship/residency

University of Kansas  
University of Wisconsin

**Jeffrey House, D.O., Professor and Associate Chair**

Medical School  
Internship/residency

Nova Southeastern College of Osteopathic Medicine  
University of Florida – Jacksonville

**Carmen Isache, M.D., Assistant Professor**

Medical School  
Internship/residency  
Subspecialty training

Gr. T. Popa University of Medicine and Pharmacy  
SUNY Downstate Medical Center  
University of Florida, Jacksonville (Infectious Disease)

**Rafik Jacob, M.D., Assistant Professor**

Medical School  
Internship/residency

Ain Shams University  
Rhode Island Hospital/Brown University

**Brittany Lyons, D.O., Assistant Professor**

Medical School  
Internship/residency

Philadelphia College of Osteopathic Medicine  
University of Florida, Jacksonville

**Ravindra Maharaj, M.D., Assistant Professor**

Medical School  
Internship/residency  
Subspecialty training

The University of the West Indies, Trinidad  
University of Florida  
University of Miami (Geriatrics)  
University of Wisconsin (Hospice and Palliative Medicine)

**Ghania Masri, M.D., Associate Professor**

Medical School  
Internship  
Residency

Damascus University, Syria  
Cleveland Clinic Foundation  
Case Western Reserve University

**Carlos Palacio, M.D., M.P.H., Professor**

Medical School  
Internship/residency  
Post-graduate training

University of Miami  
University of Florida, Jacksonville  
University of North Florida (MPH, Master of Public Health)





**Pramod Reddy, M.D., Associate Professor**

Medical School  
Internship/residency

Sri Dev Raj Urs Medical College, India  
Stony Brook University Hospital



**Elisa Sottile, M.D., Assistant Professor**

Medical School  
Internship/residency

Temple University School of Medicine  
University of Pennsylvania

## PUBLICATIONS

### Manuscripts:

**Edwards L.** Preventing Medical Errors and Improving Patient Safety DCMSONline.org Vol 70, No. 3, March 2019

Padro T, Smotherman C, **Gautam S**, Gerdik C, Gray-Eurom K, Guirgis FW. "Admission characteristics predictive of in-hospital death from hospital-acquired sepsis: A comparison to community-acquired sepsis. J Crit Care. 2019 51:145-148.

Sabra MJ, Dennis JW, Allmon JC, **Gautam S**, Habib J. "Identification of unique characteristics and the management of blunt traumatic aortic injuries occurring at unusual locations in the descending thoracic aorta" J Vasc Surg 2019;69:40-6.

Weyh A, Busby E, Smotherman C, **Gautam S**, Salman SO. "Overutilization of Computed Tomography for Odontogenic Infection." J Oral Maxillofac Surg. 2019: 528-535.

Chiriboga N, Cortez J, Pena-Ariet A, Makker K, Smotherman C, **Gautam S**, Trikardos AB, Knight H, Yeoman M, Burnett E, Beier A, Cohen I, Hudak ML. "Successful implementation of an intracranial hemorrhage (ICH) bundle in reducing severe ICH: a quality improvement project." Journal of Perinatology. 2019:143-151.

Morales Hernandez M, Omar M, Hernandez JM, Rivas JR, **Sottile E**. Brugada Pattern in Severe Hypothyroidism. Journal of Investigative Medicine, February 2019, 67 (2). 10.1136/jim-2018-000974.128

Patel H, Bahloul R, **Sottile E**. Progressive visual Loss due to Ocular Syphilis. Journal of Investigative Medicine, February 2019, 67(2). 10.1136/jim-2018-000974.282

Verdecia J, Hernandez JH, Izzo C, **Sottile E**, Isache C. A side effect of Ceftaroline in MRSA Meningitis Treatment, Journal of Investigative Medicine, February 2019, 67 (2). 10.1136/jim-2018-000974.290

Bahloul R, Patel H, Serrano I, **Sottile E**. An interesting case of Necrotizing Autoimmune Myopathy, Journal of Investigative Medicine, February 2019, 67(2). 10.1136/jim-2018-000974.573

Livingood WC, **Bilello LA**, Lukens-Bull K.(2019). Seeing the quality improvement forest through the quality improvement trees: A meta-synthesis of case studies in Florida and Georgia. Sage Open Medicine. Vol 7:1-10.

Smotherman C, **Bilello L**, Lukens-Bull K, Merten J, Wells S. (2019). Opioid Dependence and Methicillin-Resistant Staphylococcus Aureus (MRSA) Colonization or Infection in Hospitalized Patients in Florida: A Retrospective Study. Int Arch Public Health Community Med 3:017. <https://clinmedjournals.org/articles/iaphcm/international-archives-of-public-health-and-community-medicine-iaphcm-3-017.php?jid=iaphcm>

**Bilello LA**, Livingood WC, Lukens-Bull K, Smotherman C, Choe U. (2019). Texting test results reduces the time to treatment for sexually transmitted infections. J Public Health Manag Pract. 25:2, 165-170.

Leslie Caulder, BAS, C-TAGME, Jennifer Hamilton, BA, C-TAGME, Danielle Palmer, BAA, Denise West, MA, and **Linda R. Edwards, MD**. Northeast Florida Medicine DCMSONline.org Vol.70, No.1 January 2019

Seegobin K, Staggs E, Khawaja R, Maharaj S, **Gautam S**, Smotherman S, Rana F. "Pilot Study in the occurrence of multiple cancers following cancer related therapy at the University of Florida Jacksonville (2011-2016)" *Journal of Investigative Medicine*. 2018;66(7):1050-1054.

Motycka C, Egelund EF, Gannon J, Genuardi F, **Gautam S**, Stittsworth S, Young A, Simon L. "Using interprofessional medication management simulations to impact students attitudes toward teamwork to prevent medication errors." *Currents in Pharmacy Teaching and Learning*. 2018: 982-989.

Timmons JJ, Zhang K, Fong J, Lok E, Swanson KD, **Gautam S**, Wong ET. "Literature review of spinal cord glioblastoma." *American Journal of Clinical Oncology*. 2018: 1281-1287.

**Palacio C.**, Olney R. Rickets. BMJ publishing group Best Practice Website (International product on bestpractice.com) Updated 2018

**Palacio C**, Fauzia R. Blast Crisis. BMJ publishing group Best Practice Website (International product on bestpractice.com) Updated 2018

**Reddy P.** Discontinuation of Long-Term Proton Pump Inhibitor Therapy. *American Journal of Therapeutics* 2018 Nov 8.

Alkaddour A, McGaw C, Hritani R, **Palacio C**, Munoz JC, Vega KJ. Protective Propensity of Race or Environmental Features in the Development of Barrett's Esophagus in African Americans - A Single Center Pilot Study. *J Natl Med Assoc*. 2018 Oct 23.

**Perez-Downes J, Palacio C**, Ibrahim S, Shelley P, Miller A, **Reddy P**. Prognostic utility of NT-proBNP greater than 70,000 pg/mL in patients with end stage renal disease. *J Geriatr Cardiol*. 2018 Jul;15(7):476-478.

**Al-Turk B**, Harris C, Nelson G, Smotherman C, **Palacio C**, **House J**. Poverty, a risk factor overlooked: a cross-sectional cohort study comparing poverty rate and cardiovascular disease outcomes in the state of Florida. *J Investig Med*. 2018 Mar;66(3):693-695.

**Bilello LA**, Scuderi C, Haddad CJ, Smotherman C, Shahady E. (2018). Practice Transformation: Using team-based care training to improve diabetes outcomes. *Journal of Primary Care & Community Health*, Vol 9:1-5.

Alkaddour A, **Palacio C**, Vega KJ. Risk of histologic Barrett's esophagus between African Americans and non-Hispanic whites: A meta-analysis. *United European Gastroenterol J*. 2018 Feb;6(1):22-28.

#### **Abstracts/Presentations:**

**Maharaj, R.** Introduction to Palliative Care/Compassionate Weaning. Presented at UF Health Jacksonville on March 28, 2019.

**Maharaj, R.** Pediatric to Geriatric. Leading edge knowledge in Resuscitation from the Field to the ICU. Presented at UF Health Jacksonville on February 14, 2019.

**Maharaj, R.** Introduction to Palliative Care. Presented at SICU – UF Health Jacksonville on December 6, 2018.

**Maharaj, R.** Introduction to Palliative Care. Presented at Oncology Grand Rounds on November 16, 2018.

**Maharaj, R.** Pain Management in Palliative Care. Presented at the Florida ACP 50<sup>th</sup> Scientific Meeting on July 18, 2018.

**Maharaj, R.** Pain Management in Palliative Care. Presented at Grand Rounds on July 18, 2018.

#### **Editorial Board/Review:**

**Sottile, E.** Society of General Internal Medicine FORUM

**HONORS AND AWARDS**

Win Aung, MD	Fellow, American College of Physicians
Linda Edwards, MD	Hanson Professorship of Medicine University of Florida Exemplary Teacher Award 2019
Jeff House, DO	University of Florida Exemplary Teacher Award 2019
Carmen Isache, MD	University of Florida Exemplary Teacher Award 2019
Ravindra Maharaj, MD	University of Florida Exemplary Teacher Award 2019
Ghania Masri, MD	University of Florida Exemplary Teacher Award 2019
Elisa Sottile, MD	University of Florida Exemplary Teacher Award 2019 Fellow, American College of Physicians

**CLINICAL ACTIVITIES**

	<b>AY 18/19</b>
<b>Inpatient Activity</b>	
Numbers of Inpatient Admissions	4830
<b>Outpatient Activity</b>	
Clinic Visits	15,508

**CONTRACTS AND GRANTS**

<b>Investigator</b>	<b>Study Title</b>	<b>Project Period</b>	<b>Sponsor</b>	<b>Award Amount</b>
Bilello, L (Evaluation PI)	Partnerships in Improving Community Health	9/2014-9/2017	CDC	\$94,971
Bilello, L (Evaluation PI)	Evaluation of the Systems of Care Initiative (SOCi) Expansion Program.	9/2015 – 09/2019	SAMHSA	\$66,658
Bilello, L (Site PI)	ENRGISE- Enabling Reduction of low-Grade Inflammation in Seniors Pilot Study.	9/2016-5/2018	UF Institute for Aging/NIH	\$15,000
Bilello, L (Co-I)	Health-Smart for Weight Loss	1/2018 – 12/2020	PCORI Health	\$78,000
Bilello, L (Evaluation PI)	Project Save Lives	11/2017 – Present	City of Jacksonville	\$58,000
Bilello, L (Evaluation PI)	Aware Project	4/2018 – 9/2018	SAMSHA	\$20,000
Bilello, L (Evaluation PI)	TOUCH Evaluation	11/2017 – 8/2018	Broward Regional Health Planning Council	\$26,563
Bilello, L (Evaluation PI)	Health-Smart Holistic Health and Wellness Centers	11/2018 – 10/2019	Humana Foundation	\$900,000
Edwards, L (Co-PI)	Evaluate, Develop, and Implement Medication Safety Measures Using Medication Error Claim Reporting Systems and Medical Records	2016 - Present	Martin A. Smith Patient Safety and Quality Award	\$18,700
Gautam, S (Co-I)	Health-Smart for Weight Loss	10/2017 – 9/2020	PCORI Health	\$2.9M
Gautam, S (Co-I)	JAX-ASCENT	9/15/2017-5/31/2022	NIH	\$3.7M
House, J. (Principle)	Standardization of an Ultrasound Guided Procedures Curriculum for an IM Residency	9/2013 – 3/2015	Dean's Grant	\$10,000

<b>Title</b>	<b>Recipient</b>	<b>Amount</b>
Hanson Professorship	Linda Edwards, M.D.	12,000.00

**DIVISION OF HEMATOLOGY AND MEDICAL ONCOLOGY**  
**ACADEMIC YEAR 2019 (7/18 – 6/19)**

## Highlights

The Division of Hematology and Medical Oncology continued its clinical and academic missions during this past year. The division provides inpatient clinical consultation in hematology and medical oncology and maintains a thriving ACGME accredited oncology fellowship training program. Our newest faculty member Dr. Shaikh, was appointed Interim Division Chief and Cancer Committee Chair. Our division hosted and organized our second annual Breast Health Awareness Expo with current plans for a third annual expo to occur in the fall which will expand off campus into the community. We increased our community support by actively participating in the American Cancer Society's; Making Strides against Breast Cancer Walk on Team "UF Health in the Pink Zone". We were able to successfully donate and fundraise for the event. Dr. Hew was awarded University Of Florida College Of Medicine's Exemplary Teachers Award for a second year in a row. Our grant proposal to develop a Benign Hematology Care Program starting with hiring a Nurse Practitioner for Benign Hematology has been approved.

**Patient care:** Our division has expanded with the addition of new faculty members and our Sickle Cell clinic has re-located to the Faculty clinic. Our division continues to increase access to our inpatient and subspecialty experts in evaluations and treatment of hematologic malignancies. We provide service on campus, the only sickle cell clinic in Jacksonville, Florida, both outpatient and inpatient service. Patient care is readily convenient at our many locations such as the UF Health Jacksonville campus, Ambulatory Care Center, and UF Health North campus. Three of our providers offer patient consultations for both Hematology & Medical Oncology at UF Health North campus. To ensure the best quality of patient care, there has been a growing successful collaboration with multispecialty departments across the campus. All of our faculty members are working closely with the Proton Therapy Institute, the Department of Surgery, and Radiation Oncology. Faculty actively educate with patient education sheet facts; these are distributed by the physicians on different cancers (breast, colon, lung, colorectal). Our division continues to host the Oncology Pharma Expo quarterly. An Oncology support group has been created and hosted by the division's nurse navigator. This program has been very successful in boosting faculty and staff moral and building better relationships with industry without disruption in clinical activity.

**Education:** The medical oncology fellowship, under the direction of program director Dr. Dat Pham, has remained competitive and matched top candidates with 100% ABIM subspecialty board pass rate. The program successfully continues to maintain its ACGME accreditation. Dr. Zuberi is the newly appointed associate program director and her work ethic and experience enhances the medical oncology fellowship program. She provides preceptorship in the fellow's outpatient clinic and in the bone marrow clinic. Our providers offers a consult experience in hematology and oncology to residents at all training levels. This allows them to maintain autonomy in order to build their skills and confidence going forward, while ensuring that prompt diagnostic and therapeutic decisions are made in the patients' best interest. Faculty development sessions including those on small group teaching, teaching under time constraints and others are essential to the educational growth of our division. A Hematology Fellowship has been approved and we have accepted a match applicant that will begin on July 1st.

The division continues to support the Internal Medicine Residency Program through facilitation of night float rotation, Internal Medicine resident's noon conference, and Grand Rounds. The oncology fellowship has rotations at Mayo Clinic Jacksonville (Bone Marrow Transplant). Medical oncology fellows have opportunities to contribute at weekly didactic lecture series which encourages and develops great teaching skills. Our monthly Journal Club is ongoing and generates discussion on various topics and the latest

expansion in hematology and oncology. Rotating every two months at Mayo Clinic will expand the fellows' clinical knowledge with the opportunity to work with different specialists.

**Research:** The Division of Hematology and Medical Oncology continues to develop additional industry sponsored trials. Dr. Hew was appointed as our new director of research. The division is currently enrolling and actively recruiting for the Discovery Study as well as the Polaris study. IRB approval was given for a prostate cancer study that faculty and fellows have begun working on. We are open to any collaborative projects with other departments and look forward to additional multi-disciplinary projects in the future. Collaboration with UF Proton Therapy research trials continues. Our division continues to provide academic support to residents through mentorship in research endeavors. Based on the publications below, our division is continuously productive in research.

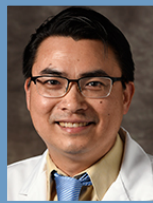
### LISTING OF FACULTY MEMBERS



**Jason Hew, M.D., Assistant Professor**

Medical School  
Internship/residency  
Subspecialty training

University of West Indies, Trinidad and Tobago  
University of Florida College of Medicine-Jacksonville  
University of Florida College of Medicine-Jacksonville



**Dat Pham, M.D., Associate Professor**

Medical School  
Internship/residency  
Subspecialty training

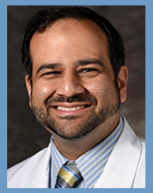
University of Florida, Gainesville  
University of Florida, Gainesville  
University of Florida, Gainesville



**Fauzia Rana, M.D., Professor and Division Chief**

Medical School  
Internship/residency  
Subspecialty training

F.J. Medical College, Pakistan  
University of Rochester  
Harvard Medical School



**Marwan Shaikh, M.D., Assistant Professor**

Medical School  
Internship/residency  
Subspecialty training

University of Toledo  
University of Florida College of Medicine-Jacksonville  
West Virginia University School of Medicine



**Lara Zuberi, M.D., Assistant Professor**

Medical School  
Internship/residency  
Subspecialty training

Aga Khan University, Pakistan  
Henry Ford Hospital  
Henry Ford Hospital

## PUBLICATIONS

Zhu HJ, Nichols RC, Henderson RH, Morris CG, Flampouri S, **Pham DC**, Klassen CL, Seeram V, Cury JD, Jones L, McGee L, Hoppe BS. Impact of unfavorable factors on outcomes among inoperable stage II-IV Nonsmall cell lung cancer patients treated with proton therapy. *Acta Oncologica* 2019; 58:3, 313-319. doi: 10.1080/0284186X.2018.1546060.

**Bhinder P**, Chahin M, **Zuberi L**. Concurrent Squamous Cell Carcinoma and Chronic Lymphocytic Leukemia Presenting as an Enlarging Neck Mass. *J Investig Med High Impact Case Rep* 2019 Jan-Dec; 7:2324709619842904. doi: 10.1177/2324709619842904.

Maharaj S, Chang S, Seegobin K, Perez-Downes J, **Zuberi L, Shaikh M**. Dynamic right ventricular outflow tract obstruction from a pedunculated cardiac metastasis. *J Echocardiogr* 2018 Dec; 16(4):185-186. doi: 10.1007/s12574-018-0379-3.

Seegobin K, Staggs E, Khawaja R, Maharaj S, Gautam S, Smotherman C, **Rana F**. Pilot study on the occurrence of multiple cancers following cancer-related therapy at the University of Florida, Jacksonville (2011-2016). *J Investig Med* 2018 Oct; 66(7):1050-1054. doi: 10.1136/jim-2018-000772.

Maharaj S, Chang S, Seegobin K, Morales J, Aysola A, **Rana F, Shaikh M**. Temporality of heparin-induced antibodies: a retrospective study in outpatients undergoing hemodialysis on unfractionated heparin. *Exp Hematol Oncol* 2018 Sep; 14; 7:23. doi: 10.1186/s40164-018-0115-8.

Maharaj S, Seegobin K, **Shaikh M, Rana F**. Flashes of light and floaters: an unusual presentation of urothelial carcinoma. *BMJ Case Rep* 2018 Aug 29; pii: bcr-2018-225486. doi: 10.1136/bcr-2018-225486.

Seegobin K, Gharia B, Maharaj S, **Zuberi L**. Coexistent Breast Cancer and Essential Thrombocythemia: How We Addressed the Therapeutic Challenges. *Case Rep Hematol*. 2018 Aug 12; 2018:2080185. doi: 10.1155/2018/2080185.

**Gharia B**, Seegobin K, Mahida H, **Shaikh M, Matthews Hew T, Pham D**. Fatal Type B Lactic Acidosis Associated With Metastatic Colorectal Cancer: A Case Report With Review of Literature, Pathogenesis, and Treatment. *J Investig Med High Impact Case Rep* 2018 Jul 19; 6:2324709618788101. doi: 10.1177/2324709618788101.

**Hew J, Pham D, Matthews Hew T**, Minocha V. A Novel Treatment With Obinutuzumab-Chlorambucil in a Patient With B-Cell Prolymphocytic Leukemia: A Case Report and Review of the Literature. *J Investig Med High Impact Case Rep* 2018 Jul 17; 6:2324709618788674. doi: 10.1177/2324709618788674.

## HONORS AND AWARDS

Jason Hew, MD

University of Florida Exemplary Teacher Award 2019

## CLINICAL ACTIVITIES

	AY 18/19
<b>Inpatient Activity</b>	
Number of Inpatient Admissions	883
<b>Outpatient Activity</b>	
Clinic Visits	6,866

**CONTRACTS AND GRANTS**

<b>Investigator</b>	<b>Study Title</b>	<b>Project Period</b>	<b>Sponsor</b>	<b>Award Amount</b>
Marwan, S.	The Benign Hematology Care Program	5/6/2019-5/5/2020	The Coastal Blood Foundation	\$125,000
Zuberi, L.	Palbociclib in Hormone Receptor Positive Advanced Breast Cancer: A Prospective Multicenter Non-interventional Study	2/26/2018-2/26/2023	Pfizer, Inc.	\$0
Pham, D.	The Collection of Whole Blood and other Human Bio-fluid Specimens from Subjects Clinically Diagnosed with Cancer and/or other Related Disease	6/21/2016-6/21/2021	Discovery Life Sciences	\$4,880.00
Rana, F.	Connect® MDS and AML: The Myelodysplastic Syndromes (MDS) and Acute Myeloid Leukemia (AML) Disease Registry	6/17/2016-12/12/2018	Celgene Corporation	\$2,560



**DIVISION OF INFECTIOUS DISEASE**  
**ACADEMIC YEAR 2019 (7/18 - 6/19)****Highlights**

The Division of Infectious Diseases continued its clinical and academic missions during this past year. The division is comprised of four university based infectious diseases consultants at the primary teaching hospital, all of whom are dually boarded in Internal Medicine and Infectious Diseases, with an additional 11 ancillary faculty composed of board certified infectious diseases physicians, doctoral level microbiologists and doctoral level pharmacists who are actively involved in various aspects of the fellowship training program.

The division provided inpatient clinical infectious diseases consultation at UF Health Jacksonville and North; hospital infection prevention and control and antimicrobial stewardship direction at UF Health Hospital and outpatient infectious diseases consultation at the downtown Ambulatory Care Center Clinic, Emerson Campus Clinic and North Campus clinic. The division maintained an ACGME accredited Infectious Diseases fellowship training program and actively participated in the training of internal medicine residents and medical students in inpatient and outpatient infectious diseases.

Members of the division also assumed administrative and teaching roles in ID division and IM activities. Dr. Sands is the university ID Division Chief, ID Fellowship Program Director and the Chair of Hospital Infection Control for UF Health Hospital. Dr. Isache was the Chair of the Antimicrobial Stewardship Programs for UF Health Hospital and the ID Fellowship Associate Program Director.

**Patient care:**

ID Division inpatient and hospital based activity: The division provided full time inpatient infectious diseases consultation throughout the UF Health Jacksonville Hospital system. During the 2018-2019 academic year, the division performed over 700 inpatient infectious diseases consultations with over 1200 subsequent follow-up visits at UF Health Hospital.

Outpatient services: The division offered outpatient ID consultation by referral at the Emerson and the Ambulatory Care Center (ACC) subspecialty clinics. During the 2018-2019 academic year, there were over 400 outpatient ID visits for HIV/AIDS and general infectious diseases diagnoses including chronic osteomyelitis and MRSA infection.

**Education:**

Grand Rounds: The division actively participates in presenting at Medical Grand Rounds and as regular attendees. This academic year, faculty gave presentations at four UF Grand Rounds and two topical lectures at the Internal Medicine Annual Update.

Fellowship Training: The division maintained an ACGME accredited fellowship in Infectious Diseases with one fellow for each of the two clinical fellowship years. The fellowship program has been re-accredited on a five-year cycle. The fellowship training is unique in offering two months of clinical microbiology, dedicated research time, two months of training in solid organ transplantation ID at the Mayo Clinic, one month training in Pediatric Infectious Diseases at Wolfson Children's Hospital and one month as a junior ID faculty consultant in the UF Health MICU, in addition to 14 months experience as the consultant and teaching fellow on the general ID in-patient consult service at UF Health.

Our infectious diseases fellows continue to distinguish themselves through maintaining a 100% ID boards pass rate and achieving successful employment as full time infectious diseases consultants in a variety of metropolitan areas, including San Francisco, Atlanta, Baton Rouge, Tampa, Orlando and here in Jacksonville.

**Resident Training:** Faculty provided a 12 lecture series ID core curriculum conference for the residents; ID consultation teaching and clinical rounds; outpatient HIV/AIDS continuity clinics; and resident ID board review sessions.

**Medical Student Education:** Medical students from UF Gainesville, other US sites and internationally, rotate on the infectious diseases consultative service and the outpatient ID clinics at both the ACC and Emerson campuses.

**ID Division Conference Schedule:** The division maintained a full conferencing schedule with topics including: core infectious diseases topics, regularly scheduled case conferences; ID board reviews; monthly journal club; HIV topical reviews; monthly TB cases and topical reviews; monthly research conferences; travel and tropical medicine conferences; transplantation ID conferences; and monthly Med/Peds ID joint conferences.

**Cooperative extramural resident and fellows' training:** As part of their curricula, Mayo Clinic ID fellows, UF Intensivist fellows, UF Pediatric ID fellows and UF Podiatry-Orthopedic residents rotated on the UF ID inpatient consultative service and in the HIV outpatient clinics.

**Research:** Dr. Sands was the principal investigator on two NIH sponsored research grants through the INSITE network; the START and Smart studies, now completed, to define the appropriate time to initiate antiviral therapy for HIV-infected patients. Post hoc analyses of the data has continued to yield valuable results and publications.

Publications and presentations this past academic year included and 16 journal articles published in peer reviewed journals, three published ID monographs, four presentations and three abstracts presented at regional and national meetings.

## LISTING OF FACULTY MEMBERS



**Carmen Isache, M.D., Assistant Professor**

Medical School / Graduation date  
Internship/residency and year  
Subspecialty training and year

Gr. T. Popa University of Medicine and Pharmacy  
SUNY Downstate Medical Center  
University of Florida, Jacksonville (Infectious Disease)



**Malleswari Ravi, M.D., Assistant Professor**

Medical School / Graduation date  
Internship/residency and year  
Subspecialty training and year

NTR University of Health Sciences, India  
SUNY Health Science Center, Stony Brook, NY  
University of Florida, Gainesville FL



**Wilfredo Sanchez, M.D., Assistant Professor**

Medical School / Graduation date  
Internship/residency and year  
Subspecialty training and year

Ponce School of Medicine, Puerto Rico  
University of Florida College of Medicine-Jacksonville  
University of Florida College of Medicine-Jacksonville


**Michael Sands, M.D., M.P.H.&T.M., Professor and Division Chief**

Medical School / Graduation date  
Internship/residency and year  
Subspecialty training and year

Georgetown University, Washington, DC  
St. Mary's Hospital, San Francisco, CA  
Tulane University School of Public Health & Tropical Medicine  
Louisiana State University School of Medicine (Infectious Disease)  
Northwestern Memorial Hospital, Dept. of Pathology, Clinical Microbiology Section (Clinical Microbiology)

**Ancillary Teaching Faculty:**
**UF Health Hospital Critical Care**

James D. Cury, MD  
Lisa Jones, MD  
Vandana Seeram, MD  
Hadi Hatoum, M.D.

**UF Health Hospital, Microbiology Laboratories**

Yvette McCarter, Ph.D.

**UF Health Hospital, Division of Pharmacy and Antimicrobial Stewardship**

Christopher Jankowski, Pharm D.

**Mayo Clinic – Transplantation ID**

Walter Hellinger, M.D.  
Julio Mendez, M.D.  
Salvatore Alvarez, M.D.  
Lisa Brumble, M.D.  
Wendy Bosch, M.D.

**Wolfson Childrens' Hospital – Pediatric ID**

Nizar Maraqa, MD  
Ana Alvarez, M.D.  
Ayesha Mirza

**State of Florida Department of Health Laboratories**

Sharon Crowe, B.S., M.S.

## PUBLICATIONS

**Manuscripts:**

Verdecia J, Vahdat K, **Isache C**. Trivalvular Infective Endocarditis secondary to Granulicatella Adiacens and Peptostreptococcus spp. IDCases. 2019 May 3;17:e00545. doi: 10.1016/j.idcr.2019.e00545. eCollection 2019. PMID: 31110943

Burden Z, Fasen M, Judkins BL, **Isache C**. A Case of West Nile Virus Encephalitis Accompanied by Diabetic Ketoacidosis and Rhabdomyolysis. IDCases. 2019 Feb 13; 15:e00505. doi: 10.1016/j.idcr.2019.e00505. eCollection 2019. PMID: 30815360

William K, Davison N, Richardson A, Rollini F, **Isache C**. Endocarditis caused by Stenotrophomonas maltophilia – A rare presentation of an emerging opportunistic pathogen. IDCases. 2019; 17:e00556. doi: 10.1016/j.idcr.2019.e00556.

Boatman JA, Baker JV, Emery S, Furrer H, Mushatt D, Dalibor S, Lundgren J, and Neaton JD for the INSIGHT START study group including **Sands M**. Risk factors for low CD4+ count recovery despite viral suppression among participants initiating antiretroviral treatment with CD4+ counts > 500 cells/mm3: findings from the Strategic Timing of AntiRetroviral Treatment (START) trial. J Acquir Immun Defic Syndr 2019; doi: 10.1097/QAI.0000000000001967 (epub ahead of print).

Borges ÁH, Neuhaus J, Sharma S, Neaton JD, Henry K, Anagnostou O, Staub T, Emery S, Lundgren JD for the INSIGHT SMART and START study groups including **Sands M**. The effect of interrupted/deferred antiretroviral therapy on disease

risk: a SMART & START combined analysis. *J Infect Dis* 2019; 219(2):254-263. doi: 10.1093/infdis/jiy442 (epub ahead of print); PMID: PMC6306018

Charlton CL, Babady E, Ginocchio CC, Jerris RC, Li Y, Loeffelholz M, **McCarter YS**, Miller MB, Novak-Weekley S, Schuetz AN, Tang Y-W, Widen R, Drews SJ. 2019. Practical guidance for clinical microbiology laboratories: Viruses causing acute respiratory tract infections. *Clin Microbiol Rev* 32:e00042-18. <https://doi.org/10.1128/CMR.00042-18>.

Ruiz J, Ganji M, Canha C, **Isache C**. A Challenging Diagnosis of Ascites: A Case Report of Peritoneal Tuberculosis. *Case Rep Infect Dis*. 2018 Oct 23; 2018:8136476. doi: 10.1155/2018/8136476. eCollection 2018. PMID: 30425867

Dharan NJ1, Neuhaus J2, Rockstroh JK3, Peters L4, Gordin F5, Arenas-Pinto A6, Emerson C7, Marks K8, Hidalgo J9, Sarmiento-Castro R10, Stephan C11, Kumarasamy N12, Emery S1,13, Matthews GV1; INSIGHT START Study Group including **Sands M**. Benefit of early versus deferred antiretroviral therapy on progression of liver fibrosis among people with HIV in the START randomized trial. *Hepatology*. 2018 Oct 8. doi: 10.1002/hep.30296. [Epub ahead of print] PMID: 30298608

Maharaj S, Brown M, Seegobin K, **Isache C**. Sarcoidosis Presenting with Facial Swelling (Heerfordt Syndrome). *Clin Case Rep*. 2018 Sep 5; 6(10):2023-2024. doi: 10.1002/ccr3.1741. eCollection 2018 Oct. PMID: 30349722

Borges AH1, Neuhaus J2, Sharma S2, Neaton JD2, Henry K3, Anagnostou O4, Staub T5, Emery S6, Lundgren JD1; INSIGHT SMART & START Study Groups including **Sands M**. The effect of interrupted/deferred antiretroviral therapy on disease risk: a SMART & ST ART combined analysis. *J Infect Dis*. 2018 Jul 19. doi: 10.1093/infdis/jiy442. [Epub ahead of print. PMID: 30032171

Arenas-Pinto A1, Grund B2, Sharma S3, Martinez E4, Cummins N5, Fox J6, Klingman KL7, Sedlacek D8, Collins S9, Flynn PM10, Chasanov WM11, Kedem E12, Katlama C13, Sierra-Madero J14, Afonso C15, Brouwers P7, Cooper DA16; INSIGHT START study group including **Sands M**. Risk of Suicidal Behavior With Use of Efavirenz: Results from the Strategic Timing of Antiretroviral Treatment Trial. *Clin Infect Dis*. 2018 Jul 18; 67(3):420-429 PMID: 29538636

Castillo-Mancilla JR, Phillips AN, Neaton JD, Neuhaus J, Collins S, Mannheimer S, Pett S, Touzeau-Römer V, Polizzotto MN, Lundgren JD, Gardner EM for the INSIGHT SMART study group including **Sands M**. Association of suboptimal antiretroviral therapy adherence with inflammation in virologically suppressed individuals enrolled in the SMART study. *Open Forum Infect Dis* 2018; 5(1), ofx275, <https://doi.org/10.1093/ofid/ofx275>.

Molina JM, Grund B, Gordin F, Williams I, Schechter M, Losso M, Law M, Ekong E, Mwelase N, Skoutelis A, Wiselka MJ, Vanderkerckhove L, Benfield T, Munroe D, Lundgren JD, Neaton JD for the INSIGHT START study group including **Sands M**. Which HIV-infected adults with high CD4 T-cell counts benefit most from immediate initiation of antiretroviral therapy? A post-hoc subgroup analysis of the START trial. *Lancet HIV* 2018; [https://doi.org/10.1016/S2352-3018\(18\)30003-1](https://doi.org/10.1016/S2352-3018(18)30003-1) (epub ahead of print).

Schlusser KE, Sharma S, de la Torre P, Tambussi G, Draenert R, Pinto AN, Metcalf JA, German D, Neaton JD, Laeyendecker O for the INSIGHT START Study Group including **Sands M**. p. Comparison of self-report to biomarkers of recent HIV infection: findings from the START trial. *AIDS & Behav* 2018; <https://doi.org/10.1007/s10461-018-2048-y> (epub ahead of print).

Wright EJ, Grund B, Robertson KR, Cysique L, Brew BJ, Collins GL, Poehlman-Roediger M, Vjecha M, Penalva de Oliveira A, Standridge B, Carey C, Avihingsanon A, Florence E, Lundgren JD, Arenas-Pinto A, Mueller NJ, Winston A, Nsubuga MS, Lal L, Price RW for the INSIGHT START Neurology Substudy Group including **Sands M**. No neurocognitive advantage for immediate antiretroviral treatment in adults with greater than 500 CD4+ T cell counts. *AIDS* 2018; doi: 10.1097/QAD.0000000000001778 (epub ahead of print)

Dharan NJ et al. including **Sands M**. Benefit of early versus deferred antiretroviral therapy on progression of liver fibrosis among people with HIV in the START randomized trial. *Hepatology*, in press.

#### Abstracts:

Neilsen C, **McCarter YS**, **Sands ML**. Universal MRSA Decolonization to Reduce Adult ICU MRSA Infections. The Society for Healthcare Epidemiology of America, Spring Conference, Boston, MA, April 2019.

Timmons, C, Yeoman M, Renfro B, Naadula P, Hazboun R, Dababneh R, **McCarter Y**, Ballis-Wu M, Gregory E, Snukla S, Makker K, Mingyinn, Alvarez A, Hudak M and Cortez J. Charge Nurses Taking Charge, Reducing Central Line Infections

and Challenging the Culture of Treating Culture Negative Sepsis: Elements of a NICU Antibiotic Stewardship Program. Pediatric Academic Societies Meeting, Baltimore, MD, April 2019.

Cawoski HAC, Johnson B, Stamper B, Casapao AM, **Jankowski CA**. A retrospective study comparing the clinical and economic outcomes of injection drug users versus non-injection drug users with endocarditis at a tertiary care center. 2019. Abstract published and presented at Florida Pharmacy Residency Conference.

#### Presentations:

Bishop PA, **McCarter YS**, **Isache C**, Smotherman C, **Jankowski, CA**. Clinical impact of an antimicrobial stewardship initiative evaluating patients with *Clostridium difficile* colitis. 2018. Abstract published and presented at Florida Pharmacy Residency Conference 2019.

**McCarter, Y**. Wound Cultures – From Start to Finish. Annual Meeting of the Southeastern Association for Clinical Microbiology, Charlotte, NC, November 2018

**McCarter, Y**. Best Practices in Respiratory and Wound Culture Work Up. 2018 Fall Meeting of the Illinois Society for Microbiology, Rosemont, IL, November 2018.

**McCarter, Y**. Wound Cultures – From Start to Finish. Baptist Health ID Rounds, Baptist Health, Jacksonville, FL, January 2018

#### Monographs and Book Chapters:

Mucormycosis. Palnitkar R, **Sands M**. BMJ Point-of-Care 2009, updated 2018; [www.pointofcare.bmj.com](http://www.pointofcare.bmj.com).

Non-Cholera Vibrio infections. **Sands M.**, **Isache C**. BMJ Point-of-Care 2009, updated 2018; [www.pointofcare.bmj.com](http://www.pointofcare.bmj.com).

Hantavirus infections. **Sands M.**, **Isache C**. BMJ Point-of-Care 2009, updated 2018; [www.pointofcare.bmj.com](http://www.pointofcare.bmj.com)

## HONORS AND AWARDS

Carmen Isache, MD	University of Florida Exemplary Teacher Award 2019
Michael Sands, MD	University of Florida Exemplary Teacher Award 2019

## CLINICAL ACTIVITIES

	AY 18/19
<b>Inpatient activity</b>	
Consults	795
Subsequent visits	1200
<b>Outpatient activity</b>	
Clinic Visits	440

## GRANTS AND CONTRACTS

Principal Investigator	Study Title	Project Period	Sponsor
M. Sands	Developing and assessing whole genome sequencing analysis for molecular epidemiology of MRSA infections at a Florida hospital	7-18 – 7-20	FoxSeq

**DIVISION OF NEPHROLOGY AND HYPERTENSION**  
**ACADEMIC YEAR 2019 (7/18 - 6/19)**

## Highlights

In the 2018 - 2019 academic year, the Division of Nephrology and Hypertension continued to make headway in meeting the goals of the academic mission.

In patient care, the offsite dialysis venture with DCI at the Gateway Unit has continued to support the hemodialysis mission for UF. ARNP's Melissa Goalen and Shatura Rowe played essential roles in the care of our large outpatient dialysis population. Lidia Dalessandro, ARNP worked on the Nephrology Hospital Services and in the Chronic Kidney Disease Clinic in the Tower. Dr. Vishal Jaikaransingh joined the faculty this year as an Assistant Professor, with expertise in both General and Transplant Nephrology. Dialysis Clinics Inc. (DCI) purchased the Shands Basement Hemodialysis and Peritoneal Units in 2018, where UF has the Medical Directorship. These hemodialysis patients will eventually move to the nearby DCI Gateway and LaVilla Dialysis Units, while the peritoneal dialysis patients will eventually move to the LaVilla Dialysis Unit.

In education, the Nephrology fellowship progressed successfully with continuation of Simulation Trainings and off-site renal transplant rotations. A new Renal Transplant Clinic was opened at the Emerson site in June of 2019. Dr. Ljubomir Ilic took over organization of the fellows' Renal Physiology Course.

The joint Renal Pathology Conference with Mayo Clinic Jacksonville and Mayo Clinic Rochester continued as a successful and important piece of the educational program, as did the Transplant Rotation at Mayo Clinic Jacksonville with a core lecture series. In addition, our annual Update in Nephrology & Hypertension CME Symposium was once again a success in 2019, with grant support from Dialysis Clinics Inc. and visiting professors from the University of Miami VAMC and the University of Augusta. Dr. Ronald Mars received a Faculty Teaching Award this academic year.

The Division presented growth factor and glucose transporter research work on glomerular disease at the 2018 American Society of Nephrology meeting. The research laboratory of Dr. Charles Heilig continued with funded basic research studies into the pathogenesis of diabetic and nondiabetic glomerulosclerosis in diabetic and transgenic mice, with a focus on the roles of Mechano-Growth Factor (MGF) and glucose transporters. Dr. Charles Heilig had research grant funding from DCI, Inc. and the Scott R. Mackenzie Foundation Research Grant for studies of glomerulosclerosis in mice. Dr. Ljubomir Ilic had research funding from DCI, Inc. to study glucose transporter risk genotypes in patients who progressed to ESRD. Dr. Yongxin Gao, Assistant Scientist in the Nephrology Research Laboratories, continued her collaborative research work on glucose transporters, MGF and other growth factors in diabetic and nondiabetic kidney disease. The Nephrology Research Laboratory also continued participation in the University of Florida Diabetes Institute to contribute Type 2 diabetes research to the mission. Dr. Heilig gave invited research presentations at the Meharry College of Medicine and the Southern Salt Water & Kidney Conference.

Fellows and/or faculty attended and participated in meetings of the American Society of Nephrology, the National Kidney Foundation, a national Home Dialysis Educational Seminar, the Update in Nephrology & Hypertension 2019 Symposium and the Internal Medicine Update 2019 Symposium.

**Patient care:** The Division of Nephrology provides physician services and the medical director for two outpatient chronic dialysis units and also provides services to the inpatient UF Health Jacksonville acute hemodialysis unit. Dialysis Services provided include both hemodialysis (HD) & peritoneal dialysis (PD). Faculty clinics are staffed at the Towers Clinic on the downtown campus by the nephrology faculty



members, and at the Emerson Transplant Clinic by Dr's Vishal Jaikaransingh and Pradeep Kadambi. The nephrology clinics at the UF Health Jacksonville campus include the Nephrology Faculty Clinics, the Anemia Clinic, the Post-Renal Transplant Clinic, the Fellows' Continuity Clinics, the Correctional Facility Clinic, the HD Outpatient Center, the PD Clinic, and fellow participation in an associated Vascular Access Clinic located in the Department of Surgery. The inpatient Nephrology Acute and Chronic Consult Services are staffed by 2 faculty members and two fellows. These two services continue to provide important educational platforms for fellows, medical residents & students. Dr. Ronald Mars continues in his position as Quality Officer for the Division.

The Division has been working with the Department of Surgery on improving placement of permanent vascular access for patients preparing for hemodialysis, to fulfill goals of the Fistula First Program. The Post-Renal Transplant Clinic continued to serve as another platform for education of the fellows and care of patients previously transplanted at this program.

**Education:** Dr. Ljubomir Ilic became the Associate Program Director in Nephrology in June 2018. The fellows' Renal Physiology Course, initiated in 2010, continues under Dr. Ilic's guidance as an important addition to the nephrology educational experience. The joint Renal Pathology Teleconference including UF Health Jacksonville, Mayo Jacksonville and Mayo Rochester, has continued to be an important educational component for the Nephrology Fellowship program. The Update in Nephrology & Hypertension 2019 CME Symposium in Jacksonville provided by the Division was well attended and received. This is an important educational venue for fellows and faculty alike. The Division plans another course in the Spring of 2020, under the guidance of Dr. Ronald Mars. Visiting professors from out of state included Dr. Leopoldo Rajj and Dr. Stanley Nahman, who provided special lectures in clinical nephrology which complemented the fellows' educational program.

The Nephrology faculty continue to participate in educational programs for the Medicine residents, including the Night Float Rotation, Medicine Residents' Noon Conferences, Nephrology Clinics & the Nephrology Hospital Consult Rotations. The Mayo Clinic Jacksonville Renal Transplant Rotation for UF Health Jacksonville Nephrology fellows continued successfully and complements the Nephrology training program at UF Health. The ACGME-required milestones have been incorporated into the fellowship training program and rotation evaluations.

**Research:** The topics of research studies in the Division spanned from basic science work on glucose transporter & growth factor roles in diabetic and nondiabetic glomerular disease, to translational work genotyping ESRD patients for kidney disease risk alleles, and dialysis catheter investigation. Dr. Heilig's laboratory focuses on glucose transporter- and MGF- regulation of glomerulosclerosis in both diabetic and nondiabetic kidney disease. This laboratory continues to be funded from two outside sources. Dr. Ljubomir Ilic is funded for translational work investigating high risk genotypes for kidney disease in patients who progressed to end stage renal failure. Dr. Ilic also directed a transplant referral diversity study for the fellows which was presented in abstract form at the American Society of Nephrology, and is in press at Clinical Nephrology. Dr. Abdalagani Abakar Baher is working to build his clinic with plans for investigation of glomerulonephritis cases.

The Nephrology fellows participated in various different research studies & scholarly activities as part of their research training. Fellows also attended/participated in research activities for the 2018 American Society of Nephrology Meeting and the 2019 National Kidney Foundation Meeting. The Nephrology Division produced 4 manuscripts, 3 abstracts and 7 presentations. There were also 4 active grants in the Division this year (3 research grants & 1 education grant).

### **Special Initiatives:**

Nephrology & Hypertension Annual Update, Jacksonville, FL: This year's meeting was organized by Dr. Ronald Mars and the UFCOM-Jacksonville Division of Nephrology. It was held at the Omni Hotel in downtown Jacksonville with strong attendance by local healthcare professionals. and was well received.



This yearly meeting provides education and CME credits. Doctors, nurses and others involved in the care of patients with renal disease attend the meeting.

Nephrology Fellows' Quality Improvement Project in Dialysis: The faculty worked with the fellows on this important activity which helped to fulfill the ACGME – required competency requirements.

Nephrology Fellows' Patient Safety Project: This Fistula-First Project includes, but is not limited to, fellow timely referral for and tracking of AV-fistula placement, outcomes from the time of referral to dialysis initiation and beyond. Goals include optimizing AVF prevalence and function for initiation of dialysis, reduction of vascular access complications once dialysis has begun, and fellow analysis of patient outcomes, by type of access initially used.

Simulation Laboratory Experiences: The Nephrology fellows received Institutional Patient Safety Training in the Simulation Laboratory. They also participated in the yearly Nephrology Simulation Laboratory experiences for temporary hemodialysis catheter placement and renal biopsy.

Fistula First Initiative: Faculty and fellows continue to participate in this quality improvement and patient safety initiative, aimed at improving patient outcomes on hemodialysis.

### LISTING OF FACULTY MEMBERS



**Abdalagani Abakar Baher, M.D., Assistant Professor**

Medical School  
Internship/residency  
Subspecialty training

University of Khartoum, Khartoum, Sudan  
Interfaith Medical Center, Brooklyn, NY  
University of Florida College of Medicine-Jacksonville



**Yongxin Gao, M.D., Assistant Scientist**

Medical School  
Postdoctoral training

Jiamusi Institute of Medicine, China  
Department of Pharmacology, University of Florida



**Charles Heilig, M.D., Professor and Division Chief**

Medical School  
Internship/residency  
Subspecialty training

University of Minnesota  
Mayo Clinic Rochester  
Brigham and Women's Hospital, Harvard Medical School



**Ljubomir Ilic, M.D., M.P.H., Assistant Professor**

Medical School  
Professional Education  
Internship/residency  
Subspecialty training

Harvard Medical School  
Harvard School of Public Health  
Yale University School of Medicine  
Beth Israel Deaconess Medical Center, Harvard Medical School

**Vishal Jaikarasingh, M.D., Assistant Professor**

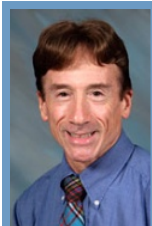
Medical School  
Internship/residency  
Subspecialty training

University of the West Indies, Trinidad  
University of Florida, Jacksonville, FL  
UT Southwestern Medical Center, Dallas, Texas

**Pradeep Kadambi, M.D., M.B.A., Professor and Senior Associate Dean, Clinical Affairs**

Medical School  
Professional Education  
Internship/residency  
Subspecialty training  
Subspecialty training

Bangalore University, Bangalore, India  
Northwestern University  
Yale University School of Medicine  
Yale University School of Medicine  
University of Chicago– Transplant Nephrology

**Ronald Mars, M.D. Associate Professor**

Medical School  
Internship/residency  
Subspecialty training

St Louis University  
Emory University  
Emory University

## PUBLICATIONS

**Manuscripts:**

**Ilic LM**, Davis RB, Brown RS, Lecker SH. The Interdialytic Creatinine Rise is a novel marker of volume overload and mortality risk in hemodialysis patients. *BMC Nephrol*. 2018;19:202.

Dill J, Bixby B, Ateeli H, Sarsah B, Goel K, Buckley R, Finkelshteyn I, Thajudeen B, **Kadambi PV**, Bime C. Renal replacement therapy in patients with acute respiratory distress syndrome: a single-center retrospective study. *Int J Nephrol Renovasc Dis*. 2018 Sep 26;11:249-257. doi: 10.2147/IJNRD.S164628. eCollection 2018. PMID: 30288081.

Otzel DM, Conover CF, Ye F, Phillips EG, Bassett T, Wnek RD, Flores M, Catter A, Ghosh P, Balazs A, Petusevsky J, Chen C, **Gao Y**, Zhang Y, Jiron JM, Bose PK, Borst SE, Wronski TJ, Aguirre JI, Yarrow JF. Longitudinal examination of bone loss in male rats after moderate-severe contusion spinal cord injury. *Calcif Tissue Int*. 2019 Jan;104(1):79-91. doi: 10.1007/s00223-018-0471-8. Epub 2018 Sep 14. PMID: 30218117.

**Abstracts:**

**Gao Y**, Bueno E, Shin N, James LR, **Heilig CW**. Mechano-Growth Factor (MGF) Mediation of Glomerulosclerosis (GS) involves activation of PKC. *JASN (Abstract Supplement)* 29:816, 2018.

Suliman S, Carlson J, Smotherman C, Gautam S, **Ilic LM**. Renal Transplantation: Does race play a role? Abstract poster presentation at: American Society of Nephrology (ASN), San Diego, CA. Nov. 2018. *J Amer Soc Nephrol*, 2018: SA-PO087.

Alsheikh R, Johnson K, Dauenhauer A, **Kadambi P**. The impact of transplant pharmacists on length of stay and 30-day hospital readmission: A single-center retrospective cohort study". Poster Presentation at: 2018 ACCP Global Conference on Clinical Pharmacy; Seattle, WA, October 2018.

**Presentations:**

**Baher A**. IGA Nephropathy. UF COM-Jacksonville Medical Grand Rounds; Jacksonville, FL, March 2019.

**Heilig CW**. Role for Glucose transporters in the Development of Glomerulosclerosis. Oral Presentation at: Meharry University School of Medicine - Medical Grand Rounds Lecture, Nashville, TN, November 2019.

**Heilig CW.** MGF Induction of MC ECM Expression Involves PKC. Oral Presentation at: Southern Salt Water and Kidney Meeting, Lido Key, FL, December 2019.

**Heilig CW.** Sickle Cell Nephropathy. UF COM-Jacksonville Medical Grand Rounds, April 19.

**Heilig CW.** Clinical Approach to Hyponatremia. Update in Nephrology and Hypertension. Jacksonville, FL, April 2019

**Ilic LM.** Nephrolithiasis. Oral Presentation at: Update in Nephrology and Hypertension. Jacksonville, FL. April 2019.

**Kadambi P.** ABCs of Kidney Transplantation. Update in Nephrology and Hypertension. Jacksonville, FL, April 2019.

**Mars R.** When to refer to the Nephrologist. Update in Nephrology and Hypertension. Jacksonville, FL, April 2019.

#### Book Chapters:

**Kadambi P,** Brennan D. Differential Diagnosis of Renal Allograft Dysfunction. In: UpToDate. Denise S. Basow (ed.), UpToDate Inc, Waltham, MA. 2019.

## HONORS AND AWARDS

Ronald Mars, MD

University of Florida Exemplary Teaching Award 2019

## CLINICAL ACTIVITIES

Inpatient activity	AY 18/19
Initial inpatient encounters	997
Inpatient dialysis treatments	2,961
Outpatient activity	
Clinic visits	3,164
Outpatient dialysis visits (full month)	2,827

## CONTRACTS AND GRANTS

Principal Investigator	Study Title	Project Period	Sponsor	Award Amount
Heilig, C	Reversal of Diabetic Glomerulosclerosis by Inhibition of Mesangial Cell Glucose Transporter GLUT1.	7/1/16 – 12/31/19	Scott R. MacKenzie Foundation, #170008	\$250,000
Heilig, C	Mechano – Growth Factor (MGF) Roles in Diabetic Glomerulosclerosis - A New Factor Promoting Diabetic Kidney Disease.	7/1/16 – 12/31/19	DCI #C-3880	\$346,599
Mars, R	Update in Nephrology & Hypertension 2018	4/2018	Dialysis Clinics, Inc.	\$35,000
Ilic, L	Genetic Variations in the Glut1 Gene in Patients with End Stage Renal Disease due to Diabetic Nephropathy.	2018 – 2020	DCI #C-4092	\$44,000

**DIVISION OF PULMONARY, CRITICAL CARE AND SLEEP MEDICINE**  
**ACADEMIC YEAR 2019 (7/18 - 6/19)**

## Highlights

The Division of Pulmonary, Critical Care and Sleep Medicine has shown stability with productive faculty members and advanced practitioners, leading to the retention of two graduating fellows. The fellowship training program continues to be popular with over 300 applications for the two available positions per year. Clinically, we continue the expansion of Pulmonary Disease and Sleep clinics at UF North. Academically, the division continues to be productive in the areas of clinical and original research and publications. The faculty was involved as moderators and presenters for various sessions in Society of CHEST, Pulmonary Hypertension Association, SETA and ATS conferences. The fellows, under the mentorship of faculty, are engaged in a number of clinical studies. The division had a number of abstracts presented in national and international conferences and was represented in various national and international meetings in the form of providing educational lectures.

**Patient care:** The division faculty staffs a number of specialized and general pulmonary clinics. The asthma clinic, under the supervision of Dr. Cury, continues to be a part of the American Lung Association Asthma Clinical Research Network and now is involved in successful industry funded clinical research in this arena. We sponsor a support group for patients and loved ones with Pulmonary Hypertension. The division continues to be involved with the community drives such as Lung Force uniting clinic and hospital staff with patients and loved ones to bring attention to Pulmonary disease states.

The pulmonary hypertension clinic, under the leadership of Dr. Seeram, continues to be a locally known referral center with patients being referred from regions all over our coast. As member of the Pulmonary Hypertension Association, it is set to become a center of comprehensive care. The clinic currently manages over 200 pulmonary hypertension patients. Performing right heart catheterizations in a dedicated suite has led to excellent patient through put. The program has applied for certification as a Regional Referral Center under The Pulmonary Hypertension Association (PHA).

Janice Wood, RRT continues to be the Pulmonary Hypertension and Interstitial Lung Disease Program Coordinator.

Under Dr. Jones' supervision, the Interstitial Lung Disease and Sarcoidosis clinic continues to expand and is involved in numerous clinical trials in the area of IPF.

The fellows' continuity clinic is staffed by at least five fellows once a week and supervised by faculty. The number of pulmonary function tests performed over both campuses has increased.

The thoracic oncology clinic continues its multidisciplinary approach to patients with thoracic malignancy. The division successfully initiated the interventional pulmonary program at the North campus under Dr. Hadi Hatoum. The already extensive interventional pulmonary program with EBUS and navigational bronchoscopy for peripheral lung lesions continues to grow with all 6 fellows obtaining certification in navigational bronchoscopy.

The inpatient pulmonary consult service continues to be busy and, with the continued evolution of the bronchoscopy, thorascopic and right heart cath suite and the number, efficiency and timeliness of procedures offered by the division has been enhanced with the addition of advanced technology across both campuses.

**Education:** The faculty has been invited to present lectures at international conferences such as CHEST, ATS and SETA in the past year, which is a reflection of national recognition of our division.

The division continues to play an active role in educational core lecture series including Grand Rounds and Updates in Internal Medicine 2018-2019. The division faculty also has an active role in the educational lectures for a variety of residency programs including Navy family medicine, emergency medicine, obstetrics, internal medicine and trauma critical care. Drs. Cury, Seeram, Hatoum and Jones were honored by University of Florida College of Medicine-Gainesville with the Exemplary Teacher Awards for 2019 and Dr. Louis in 2018. Dr. Seeram was honored by University of Florida College of Medicine-Jacksonville with Teacher of Year Award for years 2016, 2017 and 2018.

After a decade educating and mentoring budding Pulmonary and Critical Physicians, Dr. Cury will be handing off the Fellowship Program Directorship to Dr. Vandana Seeram. She will continue coordinating the educational activities for the fellowship with anticipation of continued 100% first time board pass rates for Pulmonary and Critical Care Medicine.

The division was involved in various regional/national/international meetings with faculty representing the University of Florida College of Medicine-Jacksonville by providing educational lectures in various topics of interest.

The faculty continues to mentor and supervise family medicine residents from the Navy residency program during their rotation in medical intensive care unit and have always received very positive feedback from the leadership of that program. Dr. Jones was honored by the Naval Hospital with the Admiral Paul Kaufman award for excellence in care for beneficiaries. We have been active in training nurse practitioners and physician assistants not only from the University of Florida sponsored training programs but also from local sponsored programs.

**Research:** The division has been very successful in obtaining and continuing its clinical research trials along with funded research. The funded research includes dean's grants, UF clinical quality grant and investigator initiated trials.

The number of internal unfunded clinical research protocols has also increased substantially resulting in quality abstracts being presented at national and international meetings.

A dedicated clinical research coordinator, Fallon Wainwright, has enabled the division to participate in more collaborative based clinical research protocols including sleep medicine and rheumatology.

The faculty has had a number of publications in peer review journals and has manuscripts in preparation. Close collaboration with other departments with common research interests is the key to future protocols and publications.

The focus of the division is to enhance collaboration with other departments and regional centers and continue to strive for excellence in this arena.

## LISTING OF FACULTY MEMBERS

**James D. Cury, M.D., Associate Professor**

Medical School  
Internship/residency  
Subspecialty training

University of Miami  
Barnes Hospital/Washington  
Washington University

**Hadi Hatoum, M.D., Assistant Professor**

Medical School  
Internship/residency  
Subspecialty training

American University of Beirut  
Indiana University School of Medicine  
University of Texas Southwestern

**Lisa Jones, M.D., Associate Professor and Division Chief**

Medical School  
Internship/residency  
Subspecialty training

University of Cincinnati  
University Hospital Cincinnati  
Naval Medical Center

**Mariam Louis, M.D., Associate Professor**

Medical School  
Internship/residency  
Subspecialty training

McGill University  
McGill University  
McGill University (Pulmonary Medicine)  
Johns Hopkins University (Sleep Medicine)

**Vandana Seeram, M.D., Associate Professor**

Medical School  
Internship/residency  
Subspecialty training

University of West Indies  
University of Florida/Jacksonville  
University of Florida/Jacksonville

## PUBLICATIONS

**Manuscripts:**

**Jones. L.**, "LIPid Intensive Drug therapy for Sepsis Pilot (LIPIDS-P): Phase I/II Clinical Trial Protocol of Lipid Emulsion Therapy for Stabilizing Cholesterol Levels in Sepsis and Septic Shock" has been successfully submitted online and is presently being given full consideration for publication in BMJ Open. Manuscript ID bmjopen-2019-029348.

He J. Zhu et al, **Seeram V, Cury J, Jones L**, McGee L, Hoppe B. "Impact of Unfavorable Factors on Outcomes among Inoperable Stage II-IV Non-Small Cell Lung Cancer Patients Treated with Proton Therapy" in its current form for publication in the Acta Oncologica. Ref.: Ms. No. THEIJPT-D-18-00040R1 12/2018. Pulmonary Function after Proton Therapy for Hodgkin Lymphoma International Journal of Particle Therapy.

**Najjar N**, Cerda M, Trabanco J, Ramsaran V, **Cury J**. An unusual case of hypercapnic respiratory failure. Respir Med Case Rep. 2018;25:327-329.



**Najjar N**, Staiano P, **Louis M**. Obstructive Sleep Apnea and Cardiovascular Disease in Women. CVIA Journal. Volume 3, Number 4, 1 February 2019, pp. 421-434(14).

**Ashby T, Louis M**. Circadian misalignment and Cardiovascular Risk. . CVIA Journal. Volume 3, Number 4, 1 February 2019, pp. 435-440(6).

#### Electronic Communications:

**Louis, M.**, CHEST Live WEBINAR, CME – Sleep during the menopause March 14, 2019.

**Louis, M.**, Chair, Vasomotor Symptoms in Women, San Antonio Texas. CHEST, Oct 2018.

#### Book Chapters:

**Steinberg S. Louis M**. Medical Diagnosis of Obstructive Sleep Apnea. Modern Management of Obstructive Sleep Apnea. Springer Publishing 2019. Salam Salman editor.

**Louis M**, Salman S, **Palfrey T**, Staiano P, Green K, Wagih A. Medical Management of Obstructive Sleep Apnea. Modern Management of Obstructive Sleep Apnea. Springer Publishing 2019.

#### Abstract/Presentations:

Bajric B, **Najjar N, Seeram V, Cury J**. Secondary pulmonary alveolar proteinosis presenting as steroid non-responsive interstitial lung disease in anti-MDA5 associated amyopathic dermatomyositis. Abstract submitted to American Thoracic Society International Conference, October 2018. Pending acceptance.

Trabanco J, Burden Z, **Najjar N**, Aung W. An Atypical Case of Cardiac Tamponade Leading to a Diagnosis of Metastatic Adenocarcinoma. Poster presented at American Thoracic Society International Conference; San Diego, CA. May 2018.

**Shah S, Hatoum H, Cury J**. A Fatal Case of Acute Cholangitis Caused by Aeromonas Sobria. Poster presentation - American Thoracic Society National Conference 2019, Dallas, Texas, May 2019.

Baldeo CM, Seegobin K, **Jones L**. A Sleeping Subdural Hemorrhage: Hickam’s Dictum Versus Occam’s Razor in the Intensive Care Unit. UF College of Medicine, Jacksonville, FL.

Omar M, Kogler W, Izzo, C, **Jones, L**. Arteriovenous Fistula Formation After Central Venous Catheterization. AFMR. Southern Regional Meeting, New Orleans, LA. February 21-23, 2019.

**Ashby, T**. Infographics, Asthma in women, San Antonio, Texas. CHEST, September 2018.

**Ashby, T**. CHEST Blog – Women’s Lung Diseases Week. Jacksonville, FL. May 2019.

### HONORS AND AWARDS

James D. Cury, M.D.	Exemplary Teacher Awards	2018/2019
Hadi Hatoum, M.D.	Exemplary Teacher Awards	2018/2019
Lisa M. Jones, M.D.	Exemplary Teacher Awards	2018/2019
	Teacher of Year Awards	2018/2019
Vandana Seeram, M.D.	Exemplary Teacher Awards	2018/2019

### CLINICAL ACTIVITIES

	<b>AY 18/19</b>
<b>Inpatient activity</b>	
Initial Inpatient Encounters	763
<b>Outpatient activity</b>	
Clinical Visits	5,300
<b>Procedures</b>	
Bronchoscopies	500
Sleep Studies	711

## CONTRACTS AND GRANTS

<b>Principal Investigator</b>	<b>Study Title</b>	<b>Project Period</b>	<b>Sponsor</b>	<b>Award Amount</b>
Cury	Leep : Losartan Effects on Emphysema Progression (COPD)	2017 - present	John Hopkins	
Seeram	Sphere :Upravi® (Selexipag): the usErs dRug rEgistry	11/2017 - present	Actelion	\$6,500
Seeram	RIN-PH-201 – enrolling: A Multicenter, Randomized, Double-Blinded, Placebo-Controlled Trial to Evaluate the Safety and Efficacy of Inhaled Treprostinil in Subjects with Pulmonary Hypertension due to Parenchymal Lung Disease	11/2017 - present	United Therapeutics	\$24,384
Seeram	RIN-PH-202 – roll-over of RIN-PH-201: An Open-Label Extension study of Inhaled Treprostinil in Subjects with Pulmonary Hypertension due to Parenchymal Lung Disease	11/2017 - present	United Therapeutics	
Cury	Coco – enrolling: Chronic Refractory Cough Cohort Study	2/2018 - present	John Hopkins	
Jones	BI 1199.247 – in follow-up: A double blind, randomized, placebo-controlled trial evaluating the efficacy and safety of nintedanib over 52 weeks in patients with Progressive Fibrosing Interstitial Lung Disease (PF-ILD)	2017 - present	BI	\$25,788
Jones	BI 1199.248 – rollover of 1199.247: An open-label extension trial of the long-term safety of nintedanib in patients with Progressive Fibrosing Interstitial Lung Disease (PF-ILD)	5/2019 - present	BI	\$12,912
Louis	Phillips Respironics COPD - upcoming	2/2019	Phillips	\$79,585
Cury	ABBS: Asthma BMI Baseline Study	5/2019	John Hopkins	
Cury	Leep :Losartan Effects on Emphysema Progression (COPD)	2017 - present	John Hopkins	

**DIVISION OF RHEUMATOLOGY AND CLINICAL IMMUNOLOGY**  
**ACADEMIC YEAR 2019 (7/18 - 6/19)**

## Highlights

The Division of Rheumatology and Clinical Immunology had a successful and productive academic year on multiple levels. We have seen some of the fruits of our dedication to the University of Florida College of Medicine–Jacksonville (UFCOM-J) mission. The division is grateful for the continued guidance of our leadership. The Division had significant accomplishments in patient care, research and education.

The Division continues to work with other training programs and the GME office at UFCOM-J in order to provide mentoring and teaching for many students and residents who are interested in our specialty. Our graduated fellows have now all certified in Musculoskeletal Ultrasound. We are grateful to all the staff and Graduate Medical Education office in successfully applying and receiving Rheumatology Fellowship. The first fellow, Jaspreet K Kaler has started her training in July 2018. The Division organized the 10<sup>th</sup> extremely successful annual CME musculoskeletal ultrasound training course. It was attended by national and international Rheumatologists as well as fellows in training.

The Division has been successful in recruiting faculty members. However, the backbone to our success is the loyal and hardworking staff at our clinics, hospital and administrative offices.

**Patient care:** The Division maintained its clinical volume and growth. Patients with numerous medical conditions including, but not limited to, many types of arthritis, lupus, scleroderma, myositis, autoimmune and systemic diseases, osteoporosis, connective tissue diseases related to inflammation and metabolic dysfunction, soft tissue conditions and pain such as fibromyalgia. We continue to be on the forefront of providing very up to date rheumatology services and 24/7 consultations at UF Health Jacksonville, the Ambulatory Care Clinic and our dedicated outpatient clinic on Emerson Street. The Division also provides musculoskeletal ultrasound services related to rheumatologic care both for inpatient and outpatient settings.

In the outpatient setting, we provide full rheumatology coverage from Monday through Friday, where we provide diagnostic musculoskeletal ultrasound and musculoskeletal procedures under ultrasound guidance.

Excellence is our only goal when it comes to patient care. Our faculty members achieved or exceeded the average in our specialty and in comparison to others at our institution. We touch our patients' lives during some of the most vulnerable moments they will ever encounter alone or with their loved ones. As physicians of the UFCOM-J, we always strive for excellence in our practice.

**Education:** Education is one of the main missions at the UFCOM-J. Our faculty members have been very dedicated and creative in delivering the best of what they can offer to our students and residents. Our achievements in education were highlighted in multiple venues but the rheumatology fellowship program was a major cornerstone in the growth and development of our academic program. The Division has successfully attained fellowship accreditation starting in July 2018. The fellowship provides a strong clinical focus as well as many opportunities in clinical research, quality improvement as well as musculoskeletal ultrasound.

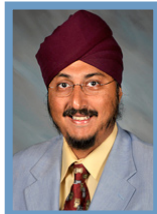
In the educational program of the University of Florida medical students and residents, Dr. Ramrattan, Dr. Thway, Dr. Ramsubeik and Dr. Kaeley participated in precepting clinics in rheumatology and delivered core curriculum lectures for the Internal Medicine Residency Program. Faculty members participated in internal medicine Grand Rounds and shared the knowledge as invited rheumatology speakers on a regular basis.

The 10<sup>th</sup> Musculoskeletal Ultrasound Course in March 2019 was a great success. This was a 3-day CME hands-on training course that uniquely utilized our state of the art simulation laboratory at the UFCOM-J. Dr. Kaeley organized the course and served as faculty, providing lectures and practical ultrasound instruction. Dr. Ramrattan served as a faculty member and Jaspreet Kaler, PGY4 Fellow, as an anatomy prosector and instructor. The course was attended by rheumatology educators and fellows from 26 States, as well as from Canada. The attendees were very complimentary of the innovative cadaver-based curriculum held in the UFCOM-J CSESaR Simulation Center. The course was complimented by an eLearning component. Faculty have also produced eLearning material featured on national websites and are deeply involved in Musculoskeletal Ultrasound education nationally and internationally. Some of the international courses have utilized cutting edge models produced by the UFCOM-J simulation center. The Division is grateful for the hard work of the simulation staff in making the courses such a success. The Division has also been heavily involved in musculoskeletal ultrasound advocacy by assisting the American College of Rheumatology and Florida Society of Rheumatology in coordinating efforts to interact with Medicare representatives.

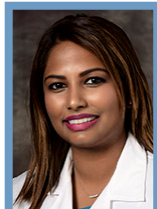
E-Learning is an entrepreneur unique project that was pioneered by Dr. Kaeley. The aim of this project is to develop electronic learning content to cover basic Rheumatology Core Curriculum, as well as musculoskeletal ultrasound training material. Dr. Kaeley has successfully deployed Canvas to enable enhancement and deep learning with the fellowship program. The division has also undertaken novel organizational tools such as Trello to improve efficiency.

**Research:** The Division has been growing its research enterprise. Although the Division is active in numerous pharmaceutical trials, its emphasis is to develop investigator initiated trials as well as to seek grants. The division has a strong quality improvement program as well as collaboration with the Pharmacy department which has resulted in two poster presentations at the Annual Meeting of the American College of Rheumatology. The Division has collaborated with multiple national renowned researchers. Of note the Division collaborated with University of Alabama to develop skills in meta-analysis resulting in a publication. The Division continues to collaborate with the University of California, Los Angeles Division of Rheumatology in a bi-center prospective trial of Tocilizumab in Rheumatoid Arthritis, utilizing Power Doppler as a secondary outcome measure. In addition, the Division has collaborations with the University of Toronto as well as University of Ottawa as part of an international effort to develop a musculoskeletal ultrasound enthesitis diagnostic tool. The Division has also been evaluating Medicare Expenditures for Musculoskeletal Ultrasound as well as drug utilization. The division had multiple poster presentations at the American College of Rheumatology annual meeting in Chicago, IL. Members of the Division are closely involved with the Outcome in Clinical Rheumatology Trials (OMERACT) musculoskeletal ultrasound group and is leading the project at developing sonographic outcome tools in psoriatic arthritis and dactylitis. Dr. Kaeley served as the chair of the Institutional Review Board 03 board.

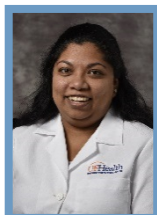
## LISTING OF FACULTY MEMBERS

**Gurjit S Kaeley, M.B.B.S., MRCP, RhMSUS, Professor and Chief**

Medical School The London Hospital Medical College, London, UK  
 Internship/residency University of Tennessee College of Medicine  
 Subspecialty training University of Tennessee College of Medicine

**Laurie A. Ramratten, M.B.B.S., RhMSUS, CCD Assistant Professor**

Medical School University of West Indies  
 Internship/residency University of Florida College of Medicine-Jacksonville  
 Subspecialty training University of Florida College of Medicine-Jacksonville

**Karishma Ramsubeik, M.D., Assistant Professor**

Medical School University of West Indies  
 Internship/residency University of Florida College of Medicine-Jacksonville  
 Subspecialty training Jackson Health System, Miami FL (Geriatrics)  
 Subspecialty training University of Wisconsin (Rheumatology)

**Myint Thway, M.D., Assistant Professor**

Medical School Institute of Medicine, Yangon, Myanmar  
 Internship/residency Lutheran Medical Center, New York  
 Subspecialty training University of Miami, Miller School of Medicine

## PUBLICATIONS

**Manuscripts:**

Eder L, **Kaeley GS**, Aydin SZ. The GRAPPA Sonographic Enthesitis Workshop. J Rheumatol Suppl. 2019 Jun;95:51-53. doi: 10.3899/jrheum.190117. PubMed PMID:31154405.

**Kaeley GS**, Ranganath VK, Roth J. The Elusive but Painful Subtalar Joint in Rheumatoid Arthritis. J Rheumatol. 2019 Apr;46(4):333-336. doi: 10.3899/jrheum.181156. PMID: 30936222

Fleischmann RM, Bliddal H, Blanco FJ, Schnitzer TJ, Peterfy C, Chen S, Wang L, Feng S, Conaghan PG, Berenbaum F, Pelletier JP, Martel-Pelletier J, Vaeterlein O, **Kaeley GS**, Liu W, Kosloski MP, Levy G, Zhang L, Medema JK, Levesque MC. A Phase 2 Trial of Lutikizumab, an Anti-Interleukin 1 $\alpha$ / $\beta$  Dual Variable Domain Immunoglobulin, in Knee Osteoarthritis Patients with Synovitis. Arthritis Rheumatol. 2019 Jan 17. doi: 10.1002/art.40840. [Epub ahead of print] PMID: 30653843

**Ramsubeik K, Ramrattan LA, Kaeley GS**, Singh JA. Effectiveness of healthcare educational and behavioral interventions to improve gout outcomes: a systematic review and meta-analysis. Ther Adv Musculoskelet Dis. 2018 Nov 19;10(12):235-252. doi: 10.1177/1759720X18807117. eCollection 2018 Dec. Review. PubMed PMID:30515250; PubMed Central PMCID: PMC6262501.

Tom S, Zhong Y, Cook R, Aydin SZ, **Kaeley G**, Eder L. Development of a Preliminary Ultrasonographic Enthesitis Score in Psoriatic Arthritis - GRAPPA Ultrasound Working Group. J Rheumatol. 2018 Oct 15. pii: jrheum.171465. doi:10.3899/jrheum.171465. [Epub ahead of print] PubMed PMID: 30323008.

**Kaeley GS**, MacCarter DK, Pangan AL, Wang X, Kalabic J, Ranganath VK. Clinical Responses and Synovial Vascularity in Obese Rheumatoid Arthritis Patients Treated with Adalimumab and Methotrexate. *J Rheumatol*. 2018 Sep 1. pii: jrheum.171232. doi: 10.3899/jrheum.171232. [Epub ahead of print] PubMed PMID: 30173153

**Kaeley GS, Ramrattan LA**, Ranganath VK. Sonography Common Rheumatic Diseases. *Indian Journal Rheumatology. Supplement* 2018 Aug 1.

**Ramsubeik K**, Tolaymat O, and **Kaeley G**. Silicone-Induced Foreign Body Reaction: An Unusual Differential Diagnosis of Posterolateral Hip Pain. *Case Rep Med*. 2018 Jul 8;2018:1802794. doi: 10.1155/2018/1802794. eCollection 2018. PMID: 30073026 <https://doi.org/10.1155/2018/1802794>.

Elalouf O, Bakirci Ureyen S, Touma Z, Anderson M, **Kaeley GS**, Aydin SZ, Eder L. Psoriatic Arthritis Sonographic Enthesitis Instruments: A Systematic Review of the Literature. *J Rheumatol*. 2018 Jul 15. pii: jrheum.171466. doi:10.3899/jrheum.171466. [Epub ahead of print] PubMed PMID: 30008458.

**Kaeley GS**, Ranganath VK. Chasing the Ghost of Imaging Remission in Rheumatoid Arthritis. *J Rheumatol*. 2018 Jul;45(7):881-883. doi: 10.3899/jrheum.180035. PubMed PMID: 29961675.

Jalandhara P, **Kaeley G**. Cutaneous toxicity of oral low-dose methotrexate. *Proc (Bayl Univ Med Cent)*. 2018 May 22;31(3):364-366. doi:10.1080/08998280.2018.1463039. eCollection 2018 Jul. PubMed PMID: 29904314; PubMed Central PMCID: PMC5997086.

#### Book Chapters:

**Kaeley GS**. Use of ultrasound in psoriatic arthritis. *Oxford Textbook of Psoriatic Arthritis*. Edited by Oliver FitzGerald and Dafna Gladman. Oxford University Press. Chapter 17. ISBN: 9780198737582. 2018 <https://global.oup.com/academic/product/oxford-textbook-of-psoriatic-arthritis-9780198737582?cc=us&lang=en&>

#### Electronic Publication Monographs:

**Kaeley GS**, Evaluation of Seronegative Arthritis. *BMJ Point-of-Care*; [www.pointofcare.bmj.com](http://www.pointofcare.bmj.com). (Reviewed May 2019: <https://online.epocrates.com/u/29111057/Evaluation+of+seronegative+arthritis>).

**Kaeley GS**, Cryoglobulinemia. *BMJ Point-of-Care*; [www.pointofcare.bmj.com](http://www.pointofcare.bmj.com). (Reviewed June 2019: <https://online.epocrates.com/u/2911870/Cryoglobulinemia>).

#### Web Based Electronic Learning Content:

2019 – Present: **Kaeley GS**: Enthesitis in Psoriatic Arthritis.

<https://www.consultant360.com/video/rheumatology/psoriatic-arthritis/gurjit-s-kaeley-md-enthesitis-psoriatic-arthritis>

2018 - Present: **Kaeley GS**, Eder L, Aydin SZ, Gutierrez M, Bakewell C. Dactylitis: A hallmark of psoriatic arthritis audio slide presentation:

<http://linkinghub.elsevier.com/retrieve/doi/10.1016/j.semarthrit.2018.02.002?goto=sd>

<http://audioslides.elsevier.com/getvideo.aspx?doi=10.1016/j.semarthrit.2018.02.002>

2018 – Present: **Kaeley GS**, Eder L, Aydin SZ, Gutierrez M, Bakewell C. Enthesitis: A Hallmark of Psoriatic Arthritis audio slide presentation:

<http://linkinghub.elsevier.com/retrieve/doi/10.1016/j.semarthrit.2017.12.008?goto=sd>

<http://audioslides.elsevier.com/getvideo.aspx?doi=10.1016/j.semarthrit.2017.12.008>

2015 – Present: **Kaeley GS**, Sonography of Psoriatic Arthritis. (Module for Ultrasound School for North American Rheumatologists): <https://vimeo.com/user19386467/review/145809370/90b8109dc7>

2013 – Present: **Kaeley GS**, Musculoskeletal Ultrasound CME Pre-Course Module. (CME provided by Suwanee Area Health Education Centers (AHEC).

2013 – Present: **Kaeley GS**, Rheumatology Fellowship Learning Management System. Design, implementation of a learning management system for UFCOM-J Rheumatology Fellows. (<https://ufcomed.instructure.com/courses/67>).



**Abstracts Presented:**

Brooks S, **Kaeley G**, Dang L. Hydroxychloroquine Quality Improvement Project at UF Health Jacksonville Rheumatology Clinics [abstract]. *Arthritis Rheumatol.* 2018; 70 (suppl 10).

Brooks S, **Kaeley G**, Dang L. Methotrexate Quality Improvement Project at UF Health Jacksonville Rheumatology Clinics [abstract]. *Arthritis Rheumatol.* 2018; 70 (suppl 10).

Kuo D, **Kaeley G**, Ben-Artzi A, Brook J, Floegel-Shetty A, Elashoff D, Ranganath VK. Synovitis Focused Ultrasound in Rheumatoid Arthritis: A Joint Reduction Strategy [abstract]. *Arthritis Rheumatol.* 2018; 70 (suppl 10).

Charles-Schoeman C, **Kaeley G**, Wang J, Shahbazian A, Brook J, Elashoff D, Ranganath VK. Reduction in Power Doppler Ultrasound Score with Tocilizumab Treatment Associates with Improvement in the Protective Profile of HDL in Patients with Rheumatoid Arthritis [abstract]. *Arthritis Rheumatol.* 2018; 70 (suppl 10).

Razmjou A, Brook J, **Kaeley G**, Elashoff D, Ranganath VK. Baseline Power Doppler and Multi-Biomarker Disease Activity Score Predict 12-Week Disease Activity Response to Tofacitinib [abstract]. *Arthritis Rheumatol.* 2018; 70 (suppl 10).

**Activities and Presentations:**

**Kaeley GS.** Faculty et Instructeur: Échographie de l'appareil locomoteur –Phase I, Mains et poignets, coudes et épaules, chevilles et pieds, genoux. Faculté de médecine et des sciences de la santé. University de Sherbrooke, Sherbrooke, Quebec, Canada. Juin 2019.

**Kaeley GS.** Inflammatory Sonopathology of the Hand and Wrist. American Institute of Ultrasound in Medicine Annual Meeting. April 2019. Orlando, FL.

**Kaeley GS.** Ultrasound Evaluation of Enthesitis in Psoriatic Arthritis. Interdisciplinary Autoimmune Network Meeting; April 5-7, 2019; Chicago, IL.

**Kaeley GS.** Sonography of the Ankle and Foot Workshop. Saudi Society of Rheumatology Annual Meeting. Riyadh, Saudi Arabia. March 2019.

**Kaeley GS.** Enthesitis Updates. Plenary Lecture. Saudi Society of Rheumatology Annual Meeting. Riyadh, Saudi Arabia. March 2019.

**Kaeley GS.** Evidence Base, Principles and Best Practices of Ultrasound Guided Joint Injections. Canadian Rheumatology Ultrasound Society Musculoskeletal Ultrasound Interventional Course. McGill University Simulation Center, Montreal, Quebec, Canada. March 2019.

**Kaeley GS.** The Shoulder – Sonoanatomy, relevant pathology and needle approach. Canadian Rheumatology Ultrasound Society Musculoskeletal Ultrasound Interventional Course. McGill University Simulation Center, Montreal, Quebec, Canada. March 2019.

**Kaeley GS.** Invited faculty for hands on instruction of workshops. Canadian Rheumatology Ultrasound Society Musculoskeletal Ultrasound Interventional Course. McGill University Simulation Center, Montreal, Quebec, Canada. March 2019.

**Ramsubeik K.** New Horizons in Biologics. UF Internal Medicine Update. Jacksonville, Florida. February 9, 2019.

**Kaeley GS.** Role of Musculoskeletal Ultrasound in Diagnosis and Management of Rheumatic and Musculoskeletal Disorders for Rheumatologists. Musculoskeletal Ultrasound & Cadaver Workshop for Rheumatologists (Intermediate Level). Jacksonville, Florida. February 2019.

**Kaeley GS.** Ultrasonography of Rheumatoid Arthritis. Musculoskeletal Ultrasound & Cadaver Workshop for Rheumatologists (Intermediate Level). Jacksonville, Florida. February 2019.

**Kaeley GS.** Invited faculty for hands on instruction of workshops. Musculoskeletal Ultrasound & Cadaver Workshop for Rheumatologists (Intermediate Level). Jacksonville, Florida. February 2019.

**Kaeley GS.** Inflammatory Arthritis Scoring. American College of Rheumatology Musculoskeletal Ultrasound Course for Rheumatologists, Chicago, IL. October 2018.

**Kaeley GS.** Invited faculty for hands on instruction - American College of Rheumatology Musculoskeletal Ultrasound Course for Rheumatologists, Chicago, IL. October 2018. (Stations included Shoulder, Elbow, Hand and Wrist, Hip, Knee, Ankle and

foot in addition to Enthesitis and Subtalar joint, Differentiating gout from CPPD, Inflammatory arthritis scoring, Sjogrens syndrome)

**Kaeley GS.** Faculty and co-writer Musculoskeletal Ultrasound Board Review Workshop at American College of Rheumatology Annual Meeting, Chicago, IL. October 2018.

**Kaeley GS.** Faculty and Instructor American College of Rheumatology Annual Meeting Ultrasound Guidance Course Utilizing Hand and Knee Injection Models. Chicago, IL. October 2018.

**Kaeley GS.** Faculty and Instructor Basic Musculoskeletal Ultrasound Workshop at American College of Rheumatology Annual Meeting, Chicago, IL. October 2018.

**Thway M.** Small Group Provider Education for Lupus. Putnam County Providers, Putnam County Health Department, FL. August 2018.

**Kaeley GS.** Spondyloarthritis Workshop: Evaluation of Psoriatic Enthesis. USSONAR Advanced Rheumatology Ultrasound Course. Snowbird, Utah. August 2018.

**Kaeley GS.** Technical aspects of scanning the entheses – scanning protocol, machine setting, pitfalls. Ultrasound Scientific Meeting Adjacent to the Annual GRAPPA Meeting. Toronto, Ontario, Canada. July 2018.

**Kaeley GS.** Faculty for hands on scanning. Ultrasound Scientific Meeting Adjacent to the Annual GRAPPA Meeting. Toronto, Ontario, Canada. July 2018.

**Kaeley GS.** Moderator for the Ultrasound Scientific Meeting Adjacent to the Annual GRAPPA Meeting. Toronto, Ontario, Canada. July 2018.

**Kaeley GS.** Screening and Assessment in axial SpA and PsA. SPARTAN-GRAPPA Educational Symposium on Axial Spondyloarthritis and Psoriatic Arthritis. Orlando, FL. July 2018.

**Kaeley GS.** Management of PsA. SPARTAN-GRAPPA Educational Symposium on Axial Spondyloarthritis and Psoriatic Arthritis. Orlando, FL. July 2018.

### CLINICAL ACTIVITIES

	FY 18/19
<b>Inpatient Activity</b>	
Initial Inpatient Encounters	105
<b>Outpatient Activity</b>	
Clinic Visits	6029
US, extremity, nonvascular	436

## CONTRACTS AND GRANTS

Principal Investigator	Study Title	Project Period	Sponsor	Award Amount
Kaeley, G	Phase 3B/4 Randomized Safety Endpoint Study Of 2 Doses Of Tofacitinib In Comparison To A Tumor Necrosis Factor (TNF) Inhibitor In Subjects With Rheumatoid Arthritis	7/5/14 - Present	Pfizer	\$79,783.20
Kaeley, G	Phase 2 Study, Multicenter, Open-Label Extension (OLE) Study in Rheumatoid Arthritis Subjects Who Have Completed a Preceding Phase 2 Randomized Controlled Trial (RCT) with ABT-494	10/22/14 - Present	Abbvie	\$318,649.29
Kaeley, G	Musculoskeletal Ultrasound In Predicting Early Dose Titration With Tocilizumab	9/4/14 – 7/26/18	UCLA	\$347,255.00
Kaeley, G	A Randomized, Double-blind, Placebo- and Active-controlled, Multicenter, Phase 3 Study to Assess the Efficacy and Safety of Filgotinib Administered for 52 weeks in Combination with Methotrexate to Subjects with Moderately to Severely Active Rheumatoid Arthritis Who Have an Inadequate Response to Methotrexate (FINCH-1)	2/1/17 - Present	Gilead	\$327,000.00
Kaeley, G	A Randomized, Double-blind, Placebo-controlled, Multicenter, Phase 3 Study to Assess the Efficacy and Safety of Filgotinib Administered for 24 weeks in Combination with Conventional Synthetic Disease-modifying Anti-rheumatic Drug(s) (csDMARDs) to Subjects with Moderately to Severely Active Rheumatoid Arthritis Who Have an Inadequate Response to Biologic DMARD(s) Treatment (FINCH-2)	2/1/17 - Present	Gilead	\$134,375.00
Kaeley, G	A Randomized, Double-blind, Placebo- and Active-controlled, Multicenter, Phase 3 Study to Assess the Efficacy and Safety of Filgotinib Administered for 52 Weeks Alone and in Combination with Methotrexate (MTX) to Subjects with Moderately to Severely Active Rheumatoid Arthritis Who Are Naïve to MTX Therapy (FINCH-3)	2/1/17 - Present	Gilead	\$286,254.00
Kaeley, G	Phase 3b/4 Randomized Double Blind Placebo Controlled Study of Methotrexate (MTX) Withdrawal in Subjects with Rheumatoid Arthritis (RA) Treated with Tofacitinib 11mg Modified Release (MR) Formulation	2/17/17 - Present	Pfizer	\$59,710.00
Kaeley, G	A Phase 2, Randomized, Double-blind, Multicenter Study Evaluating the Safety and Efficacy of Filgotinib and GS-9876 in Subjects with Lupus Membranous Nephropathy (LMN)	2/8/18 - Present	Gilead	\$124,623.00
Kaeley, G	A Multicenter, Double-blind, Long Term Extension Study to Assess the Safety and Efficacy of Filgotinib in Subjects with Rheumatoid Arthritis (FINCH-4)	4/12/18 - Present	Gilead	\$288,920.00
Kaeley, G	A Randomized, Phase 2, Double-blind, Placebo-controlled Study to Assess the Safety and Efficacy of Filgotinib, GS-9876 and GS-4059 in Adult Subjects with Active Sjogren's Syndrome	6/21/18 - Present	Gilead	\$192,380.00
Kaeley, G	A Multicenter, Double-blind, Placebo-controlled, Parallel-group Study of Ustekinumab in Subjects with Active Systemic Lupus Erythematosus	4/15/19 - Present	Janssen	\$239,028.50





**DEPARTMENT OF MEDICINE**  
*ANNUAL FACULTY MEETING*  
*JUNE 2019*